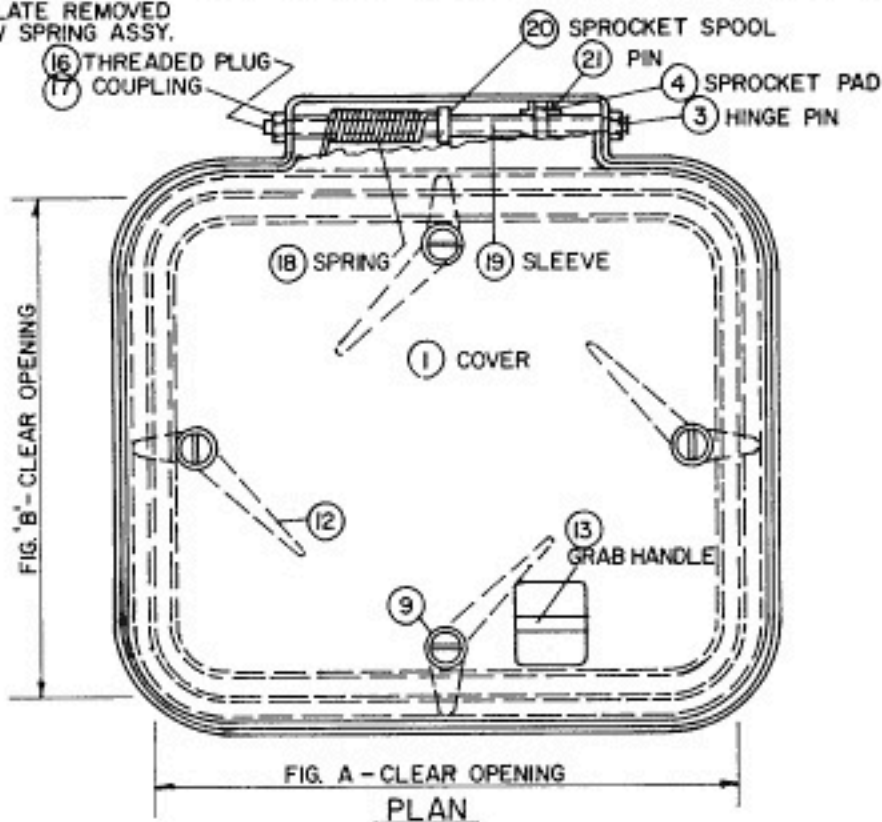


HINGE PLATE REMOVED  
TO SHOW SPRING ASSY.

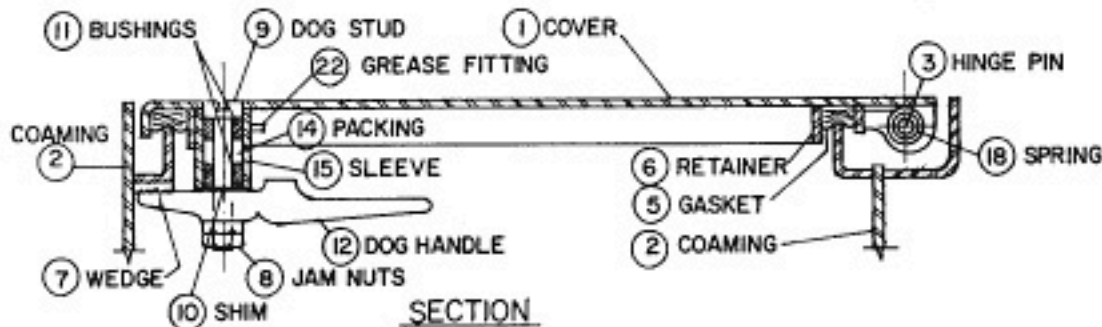


### SCHEDULE OF MATERIALS

PC.NO.	MATERIAL	REMARKS
1	MILD STEEL	
2	MILD STEEL	
3	COLD FINISH	
4	MILD STEEL	
5	NEOPRENE	
6	MILD STEEL	
7	FORGED STEEL	
8	STEEL	
9	BRASS	
10	STAINLESS	
11	DELFIN	
12	MANGANESE BRONZE	
13	MILD STEEL	
14	GRAPHITE	
15	MILD STEEL	
16	MILD STEEL	
17	COLD FINISH	
18	SPRING STEEL	
19	MILD STEEL	
20	MILD STEEL	
21	MILD STEEL	
22	PLATED	

### NOTES:

1 COVER OPENS TO APPROX. 100 DEG.



**Byrne, Rice & Turner**  
[www.BRTMarine.com](http://www.BRTMarine.com)  
 800-725-3787

**BYRNE, RICE & TURNER, INC.**

**NEW ORLEANS, LOUISIANA**

WATERTIGHT FLUSH HATCH WITH SPRING  
 BALANCED COVER & RECESSED SPRING

DRAWING NO. 217