

SERVING THE MARINE INDUSTRY SINCE 1947



Franklin Electric PRODUCT LINE

# **SURFACE PUMPS**

## **RESIDENTIAL & LIGHT COMMERCIAL**



# TABLE OF CONTENTS

<b>JET PUMPS.....</b>	<b>1</b>
SWJ (CYCLONE) SERIES .....	2
SHALLOW WELL VERSAJET .....	3
SHALLOW WELL VERSAJET PRO .....	5
CONVERTIBLE VERSAJET .....	7
CONVERTIBLE VERSAJET PRO .....	12
CONVERTIBLE VERSAJET .....	16
CONVERTIBLE PRO (RM2) SERIES.....	17
CONVERTIBLE C SERIES .....	19
<b>SELF-PRIMING PUMPS.....</b>	<b>21</b>
TURF BOSS, 1-2 HP.....	22
TURF BOSS.....	23
TURF BOSS, 3-5 HP .....	24
TURF BOSS.....	25
FBSE SERIES .....	26
<b>BOOSTER PUMPS .....</b>	<b>28</b>
MH SERIES .....	29
<b>SINGLE STAGE CENTRIFUGAL PUMPS.....</b>	<b>34</b>
DDS SERIES .....	35
FCE SERIES.....	37
A SERIES.....	39
JCM SERIES .....	41
<b>INLINE CONTROLS.....</b>	<b>43</b>
FLW .....	44
SWC & SWP .....	45
ADJ .....	46
INLINE 1100 .....	47

# JET PUMPS

Franklin's jet pumps can be configured for a variety of pressures and flow choices, and are ideal for supplying fresh water to homes, cabins, farms, or practically anywhere that has a suction lift of 100 feet or less. The material options range from cast iron to stainless steel, making the pumps a contractor's choice for any job.

## PRODUCT FAMILY

- Shallow Well VersaJet & VersaJet Pro
- SWJ Series
- Convertible VersaJet & VersaJet Pro
- Convertible Pro (RM2) Series
- C Series
- Jet Pump Accessories

## APPLICATIONS

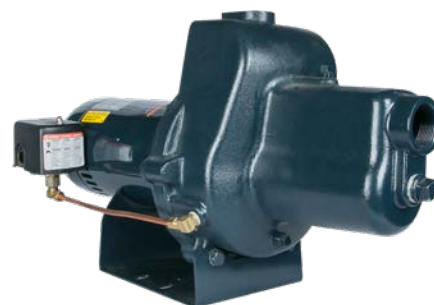
- Fresh Water Supply lifting from depths of up to 100' with deep well injector; 25' max shallow well



Convertible Pro (RM2) Series



Shallow Well VersaJet



Shallow Well VersaJet Pro



Convertible VersaJet & VersaJet Pro



C Series



SWJ Series

"I have never understood why it is "greed" to want to keep the money you have earned but not greed to want to take somebody else's money."

—Thomas Sowell





# JET PUMPS — SWJ (CYCLONE) SERIES

## FEATURES

- Non-corrosive thermoplastic construction
- Replaceable in-line nozzle design for maximum hydraulic efficiency and ease of service
- Self-cleaning, anti-clogging injector screen
- Thermoplastic impeller and diffuser ensure increased hydraulic performance
- Floating stainless steel eye seal for maximum performance and efficiency
- Phenolic/Ceramic mechanical shaft seal with nitrile elastomers and 18-8SS hardware ensures positive sealing and longevity
- Square-flange mounting provides easy serviceability without disturbing the plumbing
- Built-in drain plug for easy winterizing and servicing
- Pressure switch is installed and set at 30/50 psi
- Handles water temperatures up to 120 °F/49 °C; 75 psi maximum working pressure
- 1-1/4" inlet and 1" outlet - all models



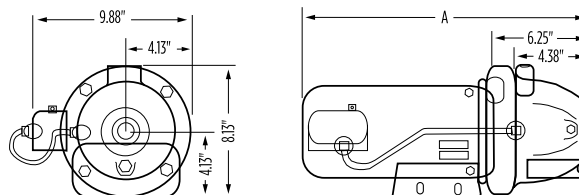
## ORDERING INFORMATION

Model	HP	Voltage	S.F.A.	Pump Unit	
				Order No.	Wt. (lbs)
FSWJ05P	1/2	115/230	12.4/6.2	91090005	23
FSWJ07P	3/4		14.8/7.4	91090007	31
FSWJ10P	1		13.0/6.7	91093010	35

## DIMENSIONS

Model	HP	A
FSWJ05P	1/2	17.63"
FSWJ07P	3/4	18.25"
FSWJ10P	1	16.90"

NOTE: Dimensions will vary according to motor manufacturer



## PERFORMANCE

Model	HP	Total Suction Lift (ft)	Discharge Pressure (PSI)								Shut-off Pressure (PSI)
			30	35	40	45	50	55	60	65	
			Gallons Per Minute (GPM)								
FSWJ05P	1/2	5	12.0	10.7	9.1	7.2	4.9	2.8	0.9	-	62
		10	-	10.0	8.4	6.3	3.9	1.9	-	-	60
		15	-	-	7.7	5.3	3.0	0.9	-	-	57
		20	-	-	6.4	4.3	2.2	0.2	-	-	55
		25	-	-	5.0	3.3	1.4	-	-	-	53
FSWJ07P	3/4	5	-	16.0	14.4	12.6	10.6	8.3	5.0	1.8	68
		10	-	-	13.5	11.8	9.7	6.9	3.6	0.2	65
		15	-	-	-	11.0	8.8	5.4	2.2	-	63
		20	-	-	-	9.0	7.2	3.9	0.8	-	60
		25	-	-	-	-	5.6	2.3	-	-	58
FSWJ10P	1	5	-	-	14.2	12.0	9.7	7.4	4.9	2.4	69.6
		10	-	-	13.2	11.4	8.9	6.5	3.9	-	67.9
		15	-	-	12.2	10.7	8.1	5.5	2.9	-	66.1
		20	-	-	-	-	7.5	4.9	2.3	-	64.8
		25	-	-	-	-	6.9	4.2	1.7	-	63.5



brtmarine.com 800-725-3787



PROUD DISTRIBUTOR OF  
**Franklin Electric**

# JET PUMPS — SHALLOW WELL VERSAJET

## FEATURES

- Revolutionary “Quick-Change” jet nozzle replacement system allows for easy customization of the pump; performance can be quickly changed from a high pressure to high flow set-up without removing the plumbing or opening the case
- Impeller (with stainless steel insert), diffuser, jet nozzle, and venturi all molded with Modified PPO, a material that increases efficiency and hydraulic performance
- Phenolic/Ceramic mechanical shaft seal with nitrile elastomers and 18-8SS hardware ensures positive sealing and longevity
- Heavy-duty cast iron case includes both pressure and drain ports
- Floating stainless steel eye seal provides maximum performance and efficiency
- Powered by high quality, industry proven, UL778 approved, indoor/outdoor square-flange single phase motors
- Pressure switch installed and set at 30/50 psi
- Water temperatures up to 120 °F/49 °C; 75 psi maximum working pressure
- 1-1/4" inlet and 1" outlet - all models



## ORDERING INFORMATION

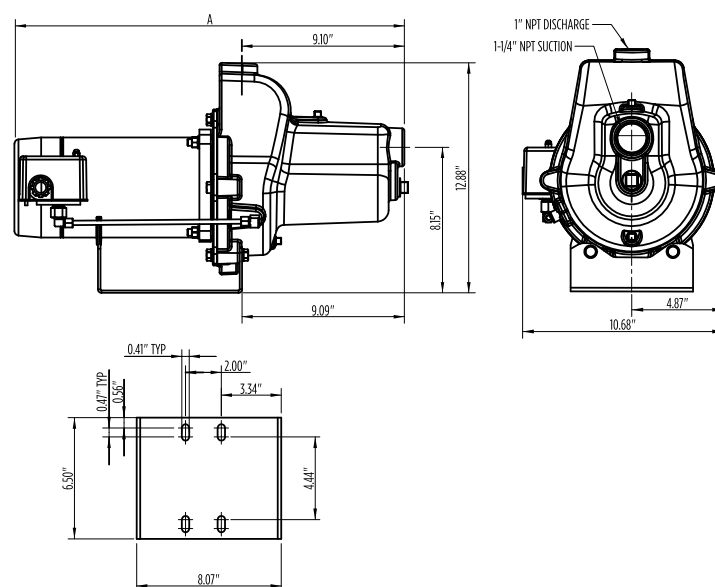
Model	HP	Voltage	S.F.A.	Pump Unit	
				Order No.	Wt. (lbs)
FVJ05CI	1/2	115/230	9.4/4.7	91180005	31
FVJ07CI	3/4		12.4/6.2	91180007	34
FVJ1CI	1		14.8/7.4	91180010	51
FVJ15CI	1-1/2		19.9/9.95	91180015	56

## DIMENSIONS

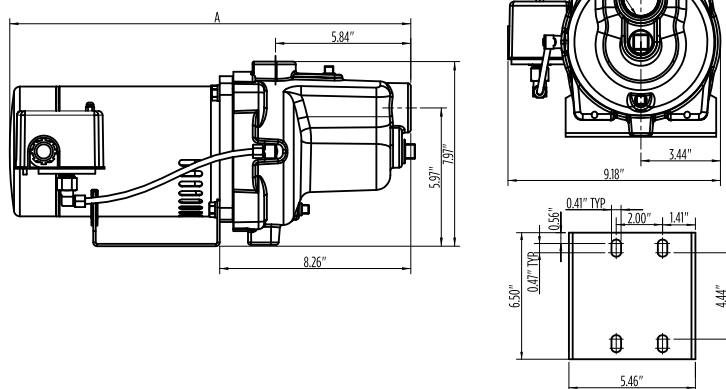
Model	HP	A
FVJ05CI	1/2	17.25"
FVJ07CI	3/4	18.00"
FVJ1CI	1	21.78"
FVJ15CI	1-1/2	22.66"

NOTE: Dimensions will vary according to motor manufacturer

### 1 AND 1.5 HP VERSAJET



### 1/2 AND 3/4 HP VERSAJET



# JET PUMPS — SHALLOW WELL VERSAJET

## SHALLOW-WELL PERFORMANCE

1" Dis. x 1-1/4" Suc.			Discharge Pressure (PSI)						Shut-off Pressure (PSI)
			10	20	30	40	50	60	
Model	Nozzle	Total Suction Lift (ft)	Gallons Per Minute (GPM)						
FVJ05CI	Nozzle B (Standard)	5	10.8	10.5	10.1	8.5	4.9	2.1	70
		10	9.4	9.1	8.7	7.5	4.1	1.6	
		15	8.0	7.7	7.4	6.5	3.4	1.1	
		20	6.2	6.0	5.7	5.3	2.6	0.5	
		25	4.4	4.3	4.1	4.0	1.8	-	
	Nozzle C (High Pressure)	5	9.8	8.9	8.3	7.6	6.3	4.0	86
		10	8.3	7.5	7.1	6.6	5.7	3.5	
		15	6.8	6.2	5.9	5.7	5.1	3.0	
		20	5.3	5.0	4.8	4.6	4.3	2.6	
		25	3.8	3.8	3.7	3.6	3.5	2.2	
	Nozzle A (High Flow)	5	12.8	12.5	12.1	5.2	-	-	47
		10	11.4	11.1	10.8	3.6	-	-	
		15	10.0	9.8	9.6	1.9	-	-	
		20	8.0	7.7	6.8	1.0	-	-	
		25	6.0	5.7	4.1	-	-	-	
FVJ07CI	Nozzle C (Standard)	5	16.3	15.6	15.1	14.1	9.0	3.8	70
		10	14.2	13.6	13.1	12.5	7.8	2.9	
		15	12.1	11.6	11.2	10.8	6.5	2.0	
		20	9.5	9.1	8.9	8.7	5.0	1.0	
		25	7.0	6.7	6.7	6.6	3.5	-	
	Nozzle D (High Pressure)	5	15.8	15.2	14.7	14.1	9.6	4.8	73
		10	13.9	13.2	12.8	12.4	8.5	3.9	
		15	11.9	11.1	10.8	10.6	7.5	3.0	
		20	9.2	8.8	8.6	8.5	6.2	1.8	
		25	6.5	6.5	6.4	6.4	4.8	0.6	
	Nozzle A (High Flow)	5	18.9	18.7	18.4	11.6	-	-	47
		10	16.8	16.6	16.3	8.0	-	-	
		15	14.8	14.5	14.2	4.4	-	-	
		20	11.8	11.6	11.2	2.2	-	-	
		25	8.8	8.7	8.1	-	-	-	
FVJ1CI	Nozzle B (Standard)	5	21.5	21.0	20.7	20.4	12.8	3.9	64
		10	19.2	18.8	18.5	18.2	11.3	2.0	
		15	16.9	16.6	16.3	16.0	9.7	-	
		20	13.6	13.4	13.2	13.0	7.4	-	
		25	10.4	10.3	10.1	10.0	5.0	-	
	Nozzle C (High Pressure)	5	20.4	19.8	19.4	19.1	14.6	7.7	71
		10	18.1	17.6	17.3	17.1	13.6	6.5	
		15	15.9	15.4	15.2	15.0	12.6	5.2	
		20	12.7	12.4	12.2	12.1	10.8	3.3	
		25	9.5	9.3	9.2	9.1	9.0	1.4	
	Nozzle A (High Flow)	5	23.3	23.0	22.7	20.2	7.6	-	54
		10	20.7	20.3	20.0	17.4	3.8	-	
		15	18.1	17.7	17.3	14.6	-	-	
		20	14.8	14.5	14.2	10.8	-	-	
		25	11.5	11.3	11.1	7.0	-	-	
FVJ15CI	Nozzle B (Standard)	5	29.0	28.6	28.2	27.8	24.0	11.6	66
		10	25.5	25.0	24.8	24.5	21.2	7.7	
		15	21.9	21.5	21.3	21.1	18.5	3.8	
		20	17.6	17.2	16.9	16.7	13.8	1.9	
		25	13.2	12.9	12.6	12.3	9.2	-	
	Nozzle C (High Pressure)	5	28.7	28.2	27.9	27.6	26.8	15.5	72
		10	25.3	24.8	24.4	24.0	23.4	13.3	
		15	21.9	21.4	20.9	20.5	20.1	11.2	
		20	17.4	17.1	16.8	16.6	16.3	7.0	
		25	13.0	12.9	12.7	12.6	12.5	2.8	
	Nozzle A (High Flow)	5	30.3	29.9	29.5	29.2	19.5	-	59
		10	26.9	26.6	26.2	25.9	15.9	-	
		15	23.6	23.3	22.9	22.6	12.4	-	
		20	19.0	18.8	18.5	17.9	6.2	-	
		25	14.5	14.3	14.1	13.2	-	-	



# JET PUMPS — SHALLOW WELL VERSAJET PRO

## FEATURES

- Revolutionary “Quick-Change” jet nozzle replacement system allows for easy customization of the pump; performance can be quickly changed from a high pressure to high flow set-up without removing the plumbing or opening the case
- Impeller (with stainless steel insert), diffuser, jet nozzle, and venturi all molded with Modified PPO, a material that increases efficiency and hydraulic performance
- Phenolic/Ceramic mechanical shaft seal with nitrile elastomers and 18-8SS hardware ensures positive sealing and longevity
- Heavy-duty cast iron case features both pressure and drain ports
- Floating stainless steel eye seal for maximum performance and efficiency
- Powered by high quality, industry proven, UL778 approved, indoor/outdoor square-flange motors; both single and three phase motors, the latter inverter duty rated
- Pressure switch installed and set at 30/50 psi (not included on three phase motors)
- Water temperatures up to 120 °F/49 °C; 75 psi maximum working pressure
- 1-1/4" inlet and 1" outlet - all models



## ORDERING INFORMATION

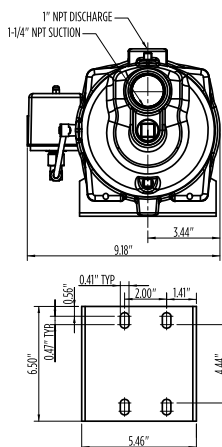
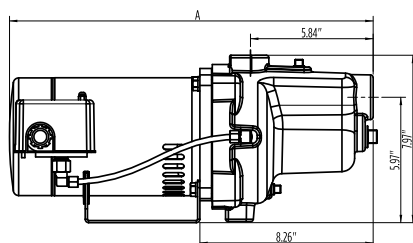
Model	HP	Phase	Voltage	S.F.A.	Pump Unit	
					Order No.	Wt. (lbs)
FVJ05CI-P	1/2	1	115/230	12.4/6.2	91181005	34
FVJ07CI-P	3/4			14.8/7.4	91181007	51
FVJ1CI-P	1			19.9/9.95	91181010	56
FVJ05CI-T	1/2	3	208-230/460	3.0/1.5	91183005	34
FVJ07CI-T	3/4			3.6/1.8	91183007	51
FVJ10CI-T	1			4.7/2.35	91183010	56

## DIMENSIONS

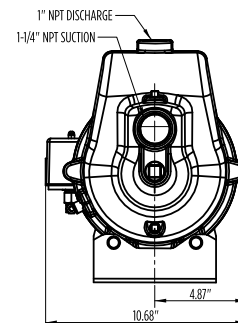
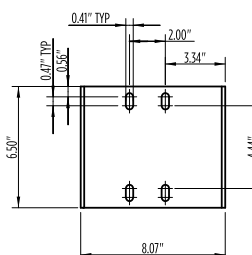
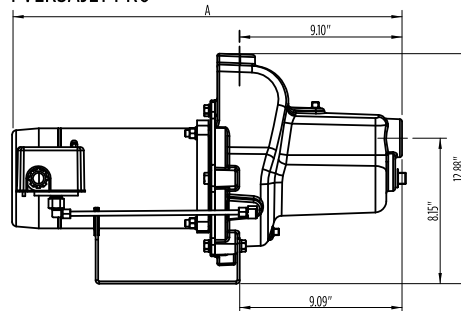
Model	HP	A
FVJ05CI-P	1/2	18.00"
FVJ07CI-P	3/4	21.78"
FVJ1CI-P	1	22.66"

NOTE: Dimensions will vary according to motor manufacturer

### 1/2 VERSAJET PRO



### 1 VERSAJET PRO





# JET PUMPS — SHALLOW WELL VERSAJET PRO

## SHALLOW-WELL PERFORMANCE

1" Dis. x 1-1/4" Suc.			Discharge Pressure (PSI)						Shut-off Pressure (PSI)
			10	20	30	40	50	60	
Model	Nozzle	Total Suction Lift (ft)	Gallons Per Minute (GPM)						
FVJ05CI-P	Nozzle C (Standard)	5	16.3	15.6	15.1	14.1	9.0	3.8	70
		10	14.2	13.6	13.1	12.5	7.8	2.9	
		15	12.1	11.6	11.2	10.8	6.5	2.0	
		20	9.5	9.1	8.9	8.7	5.0	1.0	
		25	7.0	6.7	6.7	6.6	3.5	-	
	Nozzle D (High Pressure)	5	15.8	15.2	14.7	14.1	9.6	4.8	73
		10	13.9	13.2	12.8	12.4	8.5	3.9	
		15	11.9	11.1	10.8	10.6	7.5	3.0	
		20	9.2	8.8	8.6	8.5	6.2	1.8	
		25	6.5	6.5	6.4	6.4	4.8	0.6	
	Nozzle A (High Flow)	5	18.9	18.7	18.4	11.6	-	-	47
		10	16.8	16.6	16.3	8.0	-	-	
		15	14.8	14.5	14.2	4.4	-	-	
		20	11.8	11.6	11.2	2.2	-	-	
		25	8.8	8.7	8.1	-	-	-	
FVJ07CI-P	Nozzle B (Standard)	5	21.5	21.0	20.7	20.4	12.8	3.9	64
		10	19.2	18.8	18.5	18.2	11.3	2.0	
		15	16.9	16.6	16.3	16.0	9.7	-	
		20	13.6	13.4	13.2	13.0	7.4	-	
		25	10.4	10.3	10.1	10.0	5.0	-	
	Nozzle C (High Pressure)	5	20.4	19.8	19.4	19.1	14.6	7.7	71
		10	18.1	17.6	17.3	17.1	13.6	6.5	
		15	15.9	15.4	15.2	15.0	12.6	5.2	
		20	12.7	12.4	12.2	12.1	10.8	3.3	
		25	9.5	9.3	9.2	9.1	9.0	1.4	
	Nozzle A (High Flow)	5	23.3	23.0	22.7	20.2	7.6	-	54
		10	20.7	20.3	20.0	17.4	3.8	-	
		15	18.1	17.7	17.3	14.6	-	-	
		20	14.8	14.5	14.2	10.8	-	-	
		25	11.5	11.3	11.1	7.0	-	-	
FVJ1CI-P	Nozzle B (Standard)	5	29.0	28.6	28.2	27.8	24.0	11.6	66
		10	25.5	25.0	24.8	24.5	21.2	7.7	
		15	21.9	21.5	21.3	21.1	18.5	3.8	
		20	17.6	17.2	16.9	16.7	13.8	1.9	
		25	13.2	12.9	12.6	12.3	9.2	-	
	Nozzle C (High Pressure)	5	28.7	28.2	27.9	27.6	26.8	15.5	72
		10	25.3	24.8	24.4	24.0	23.4	13.3	
		15	21.9	21.4	20.9	20.5	20.1	11.2	
		20	17.4	17.1	16.8	16.6	16.3	7.0	
		25	13.0	12.9	12.7	12.6	12.5	2.8	
	Nozzle A (High Flow)	5	30.3	29.9	29.5	29.2	19.5	-	59
		10	26.9	26.6	26.2	25.9	15.9	-	
		15	23.6	23.3	22.9	22.6	12.4	-	
		20	19.0	18.8	18.5	17.9	6.2	-	
		25	14.5	14.3	14.1	13.2	-	-	

“Much of the social history of the Western world over the past three decades has involved replacing what worked with what sounded good.”

—Thomas Sowell



brtmarine.com 800-725-3787



PROUD DISTRIBUTOR OF  
**Franklin Electric**

# JET PUMPS — CONVERTIBLE VERSAJET

## FEATURES

- Heavy-duty cast iron pump case includes (3) 1" discharge/pressure ports for optimum installation flexibility, plus a 1/4" NPT port for pressure gauge mounting
- Each rating is available with one of (5) factory mounted suction flanges to enable the pump to replace a deep well pump unit installed in the field without altering the existing suction and pressure pipe connections; includes vacuum port for AVC connection
- Adjustable height pump base further enables matching the pump to existing plumbing
- Thermoplastic impeller and diffuser are precision molded for high efficiency and dependability
- Phenolic/Ceramic mechanical shaft seal with nitrile elastomers and 18-8SS hardware ensures positive sealing and longevity
- Adjustable pressure switch is factory set at 30/50 psi
- Water temperatures up to 120 °F/49 °C; 75 psi maximum working pressure
- Powered by high quality, industry proven, UL778 approved, indoor/outdoor square-flange motors



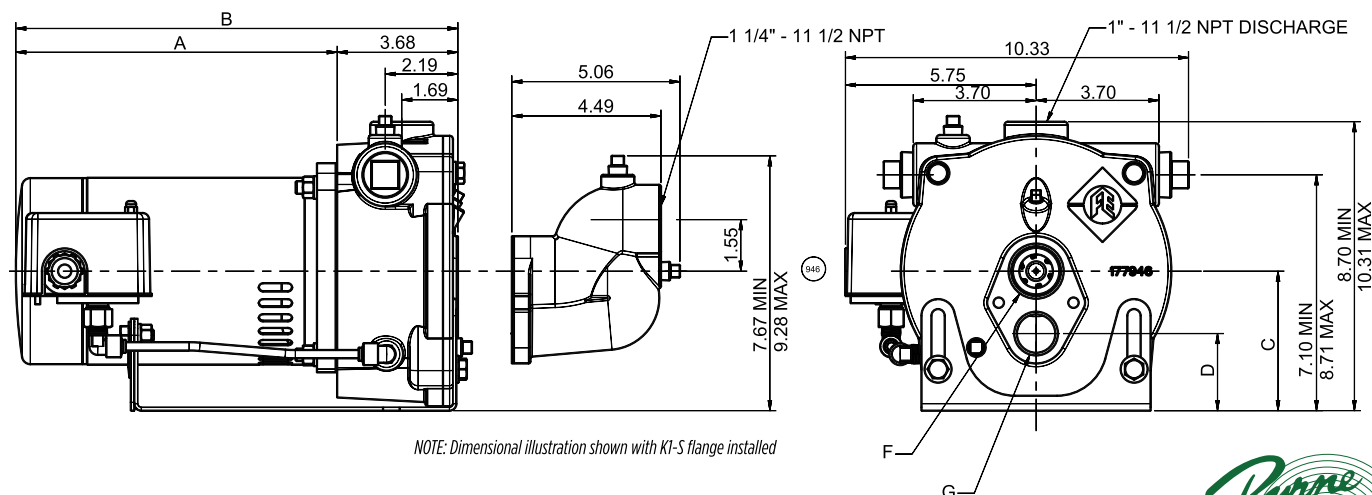
## ELECTRICAL INFORMATION

Model	HP	Voltage	S.F.A.
FCVJ05CI	1/2	115/230	9.4/4.7
FCVJ07CI	3/4		12.4/6.2
FCVJ10CI	1		14.8/7.4
FCVJ15CI	1-1/2		19.9/9.95

NOTE: Deep-well installations require a 4" inside well diameter and control valve 96150951

## DIMENSIONS

Model	HP	A	B
FCVJ05CI	1/2	9.63"	13.31"
FCVJ07CI	3/4	10.38"	14.06"
FCVJ10CI	1	11.00"	13.68"
FCVJ15CI	1-1/2	11.88"	15.56"



# JET PUMPS — CONVERTIBLE VERSAJET

## SHALLOW-WELL PERFORMANCE

CVJ Series				Discharge Pressure (PSI)						Shut-off Pressure (PSI)
Model	HP	Injector Kit	Total Suction Lift (ft)	30	40	50	60	70	80	
				Gallons Per Minute (GPM)						
FCVJ05CI	1/2	SW1	5	11.5	7.0	3.9	-	-	-	61
			10	10.2	6.4	3.2	-	-	-	59
			15	9.1	5.8	2.4	-	-	-	57
			20	8.0	5.1	1.7	-	-	-	55
			25	6.5	4.4	0.8	-	-	-	53
		SW2	5	10.6	6.6	4.6	2.4	-	-	71
			10	9.3	6.2	4.1	1.9	-	-	69
			15	8.2	5.7	3.7	1.4	-	-	67
			20	6.8	5.2	3.1	1.0	-	-	65
			25	5.2	4.8	2.6	0.6	-	-	63
		SW3	5	8.0	5.8	4.6	3.2	1.9	0.8	88
			10	6.9	5.5	4.3	2.9	1.7	0.6	86
			15	5.9	5.2	4.0	2.7	1.4	-	84
			20	-	4.7	3.6	2.4	1.2	-	82
			25	-	3.7	3.3	2.1	1.0	-	80
FCVJ07CI	3/4	SW5	5	-	-	-	-	-	-	-
			10	16.7	14.0	8.2	2.8	-	-	65
			15	-	12.7	6.8	1.6	-	-	63
			20	-	11.3	5.7	-	-	-	61
			25	-	8.8	4.6	-	-	-	59
		SW6	5	11.8	11.8	8.6	5.3	2.9	0.8	85
			10	-	10.2	7.8	4.7	2.5	-	83
			15	-	8.7	7.0	4.2	2.2	-	81
			20	-	7.1	6.2	3.8	1.7	-	79
			25	-	-	5.5	3.4	1.2	-	77
		SW7	5	-	8.2	7.9	5.7	3.8	2.4	101
			10	-	7.1	6.9	5.3	3.6	2.2	99
			15	-	-	6.1	4.8	3.3	1.9	97
			20	-	-	5.1	4.4	3.1	1.7	95
			25	-	-	4.1	4.0	2.7	1.4	93
FCVJ10CI	1	SW4	5	21.4	18.6	11.8	5.2	-	-	68
			10	18.8	17.1	10.4	3.8	-	-	66
			15	16.2	15.4	8.9	2.4	-	-	64
			20	13.4	13.4	7.5	0.8	-	-	61
			25	10.5	10.5	6.2	-	-	-	59
		SW5	5	18.7	18.5	13.0	7.7	2.8	-	76
			10	-	16.4	11.8	6.6	1.6	-	73
			15	-	14.2	10.7	5.4	-	-	71
			20	-	11.6	9.5	4.5	-	-	69
			25	-	9.0	8.4	3.6	-	-	67
		SW6	5	-	11.7	11.1	7.8	5.2	3.1	98
			10	-	10.3	10.2	7.2	4.8	2.8	96
			15	-	-	8.8	6.7	4.4	2.5	94
			20	-	-	7.3	6.2	4.0	2.1	92
			25	-	-	5.7	5.6	3.6	1.7	90
FCVJ15CI	1-1/2	SW4	5	-	21.3	20.5	13.5	6.6	-	81
			10	-	18.7	18.3	11.8	5.2	-	78
			15	-	16.0	15.9	10.1	3.8	-	76
			20	-	13.3	13.3	8.6	2.0	-	73
			25	-	10.5	10.5	-	-	-	71
		SW5	5	-	-	18.3	15.2	9.5	4.4	89
			10	-	-	16.1	13.8	8.5	3.4	87
			15	-	-	13.9	12.4	7.4	2.3	85
			20	-	-	11.4	10.9	6.0	1.1	82
			25	-	-	8.8	8.8	4.7	-	80
		SW6	5	-	-	11.4	11.3	9.3	6.7	118
			10	-	-	-	10.1	8.6	6.2	116
			15	-	-	-	8.7	8.0	5.7	113
			20	-	-	-	7.2	7.1	5.3	111
			25	-	-	-	-	5.7	4.8	108



BR

# JET PUMPS — CONVERTIBLE VERSAJET

## DEEP-WELL PERFORMANCE

CVJ Series				Discharge Pressure (PSI)						Shut-off Pressure (PSI)
Model	HP	Injector Kit	Total Suction Lift (ft)	30	35	40	45	50	55	
				Gallons Per Minute (GPM)						
FCVJ05CI	1/2	DW2	30	8.0	4.4	1.5	-	-	-	56
			40	6.3	3.0	-	-	-	-	51
			50	4.6	1.6	-	-	-	-	46
			60	2.9	-	-	-	-	-	41
			70	1.6	-	-	-	-	-	36
		DW5	30	6.0	4.5	3.0	2.0	1.2	-	87
			40	5.3	3.8	2.5	1.6	0.8	-	81
			50	4.4	3.1	2.0	1.1	-	-	76
			60	3.6	2.4	1.5	0.7	-	-	70
			70	3.0	1.9	1.0	-	-	-	64
			80	2.3	1.3	0.6	-	-	-	58
			90	1.7	0.8	-	-	-	-	51
FCVJ07CI	3/4	DW2	30	11.1	7.2	4.0	1.3	-	-	65
			40	9.3	5.7	2.7	-	-	-	60
			50	7.4	4.2	1.5	-	-	-	55
			60	5.6	2.7	-	-	-	-	51
			70	4.1	1.3	-	-	-	-	45
			80	2.7	-	-	-	-	-	40
			90	1.2	-	-	-	-	-	35
		DW1	30	-	6.6	5.0	3.4	2.2	1.3	97
			40	6.6	6.0	4.2	2.8	1.7	0.9	92
			50	6.6	5.1	3.5	2.3	1.3	-	86
			60	5.9	4.1	2.7	1.7	0.8	-	81
			70	5.0	3.4	2.2	1.2	-	-	76
			80	4.1	2.7	1.6	0.8	-	-	70
			90	3.1	2.0	1.1	-	-	-	65
FCVJ10CI	1	DW2	30	12.2	9.9	6.3	3.5	0.8	-	74
			40	11.4	8.2	4.9	2.2	-	-	69
			50	9.7	6.5	3.5	0.8	-	-	64
			60	7.9	4.8	2.1	-	-	-	59
			70	6.1	3.4	0.8	-	-	-	53
			80	4.3	2.0	-	-	-	-	48
			90	2.5	0.6	-	-	-	-	43
		DW4	30	-	7.9	5.9	4.1	2.7	1.4	94
			40	7.9	6.9	5.0	3.4	2.1	0.9	88
			50	7.5	5.8	4.1	2.6	1.4	-	83
			60	6.6	4.7	3.2	1.9	0.8	-	77
			70	5.5	3.9	2.5	1.3	-	-	71
			80	4.4	3.1	1.7	0.6	-	-	66
			90	3.3	2.3	1.0	-	-	-	60
FCVJ15CI	1-1/2	DW3	30	-	16.5	9.8	3.5	-	-	67
			40	-	13.0	6.9	1.0	-	-	62
			50	-	9.4	4.1	-	-	-	57
			60	-	5.9	1.2	-	-	-	52
		DW2	30	-	12.2	10.3	7.0	4.1	1.5	87
			40	-	11.4	8.6	5.5	2.8	-	82
			50	-	9.7	6.9	4.0	1.4	-	76
			60	-	8.2	5.2	2.5	-	-	71
			70	-	6.6	3.8	1.3	-	-	66
			80	-	4.9	2.5	-	-	-	60
			90	-	3.3	1.1	-	-	-	55
		DW4	30	-	7.9	7.8	6.3	4.8	3.3	111
			40	-	7.9	7.3	5.4	4.0	2.6	105
			50	-	7.8	6.3	4.6	3.2	2.0	99
			60	-	7.0	5.2	3.7	2.4	1.3	93
			70	-	6.0	4.4	3.0	1.8	0.7	87
			80	-	5.1	3.6	2.3	1.2	-	82
			90	-	4.1	2.8	1.6	0.6	-	76





# JET PUMPS — CONVERTIBLE VERSAJET

## ORDERING INFORMATION

### REPLACEMENT DEEP WELL PUMPS

(Where the existing deep well injector assembly remains in the well, connected to the suction & pressure pipes and only the surface pump and motor are being replaced)

1. Select the replacement pump from the following chart, based upon the pump brand, series and horsepower rating of the unit being replaced. Please consult performance charts to verify new pump will meet design expectations.

Convertible Versajet with Suction Flange Factory Mounted				
Model	HP	Order Number	Suction Flange	Accepts SW Injector
CVJ05CI-S	1/2	96136005	K1-S	Yes
CVJ07CI-S	3/4	96136007		
CVJ10CI-S	1	96136010		
CVJ15CI-S	1-1/2	96136015		

### NEW DEEP WELL PUMP INSTALLATIONS (MINIMUM 4" I.D. WELL REQUIRED)

1. Select the pump from the above chart after having consulted the performance charts to verify the desired flow and pressure will be achieved from the depth from which well water is to be lifted using the following deep well injector kit.
2. To maintain sufficient back-pressure on the deep well injector, a deep well control valve should be installed on the discharge line. (1" MNPT x 1" FNPT connections)

Deep Well Injector	Order Number
DW1-5	96152000

*NOTE: This kit contains all nozzle & venturi combinations, plus instructions of how to choose and install the correct ones for your specific application*

Deep Well Control Valve	Order Number
DW-CV	96150951

"Some people try to turn back their odometers. Not me; I want people to know 'why' I look this way. I've traveled a long way, and some of the roads weren't paved."

—Will Rogers



brtmarine.com 800-725-3787



PROUD DISTRIBUTOR OF  
**Franklin Electric**

# JET PUMPS — CONVERTIBLE VERSAJET

## ORDERING INFORMATION (CONT.)

### NEW OR REPLACEMENT SHALLOW WELL PUMP INSTALLATIONS

1. Select the pump with K1-S suction flange the from the following chart, based upon the horsepower rating and performance needed. Note that only the K1-S suction flange will allow the shallow well injector kit to bolt up to it successfully.

Convertible Versajet with Suction Flange Factory Mounted				
Model	HP	Order Number	Suction Flange	Accepts SW Injector
CVJ05CI-S	1/2	96136005	K1-S	Yes
CVJ07CI-S	3/4	96136007		
CVJ10CI-S	1	96136010		
CVJ15CI-S	1-1/2	96136015		

2. Order the following shallow well injector kit to fit the pump selected. This kit contains nozzles and venturi to enable it to fit all shallow well applications described in the performance charts.

Shallow Well Injector	Order Number
SW1-7	96151000

*NOTE: This kit contains all nozzle & venturi combinations, plus instructions of how to choose and install the correct ones for your specific application*

### ALTERNATE SUCTION FLANGE KITS

1. Should an alternate suction flange kit be needed to retrofit a pump to enable it to serve a specific application, the following are available and include all necessary hardware for mounting.

Suction Flange Model	Order Number
K1-S (Sta-Rite)	96150946
K2-G (Goulds)	96150947
K3-F (F&W)	96150948
K4-M (Myers)	96150949
K5-J (Jacuzzi)	96150952

“Eventually you will reach a point when you stop lying about your age and start bragging about it.”

—Will Rogers



PROUD DISTRIBUTOR OF  
**Franklin Electric**

[brtmarine.com](http://brtmarine.com) 800-725-3787

# JET PUMPS — CONVERTIBLE VERSAJET PRO

## FEATURES

- Heavy-duty cast iron pump case includes (3) 1" discharge/pressure ports for optimum installation flexibility, plus a 1/4" NPT port for pressure gauge mounting
- Each rating is available with one of (5) factory mounted suction flanges to enable the pump to replace a deep well pump unit installed in the field without altering the existing suction and pressure pipe connections; includes vacuum port for AVC connection
- Adjustable height pump base further enables matching the pump to existing plumbing
- Thermoplastic impeller and diffuser are precision molded for high efficiency and dependability
- Phenolic/Ceramic mechanical shaft seal with nitrile elastomers and 18-8SS hardware ensures positive sealing and longevity
- Adjustable pressure switch is factory set at 30/50 psi
- Water temperatures up to 120 °F/49 °C; 75 psi maximum working pressure
- Powered by high quality, industry proven, UL778 approved, indoor/outdoor square-flange motors



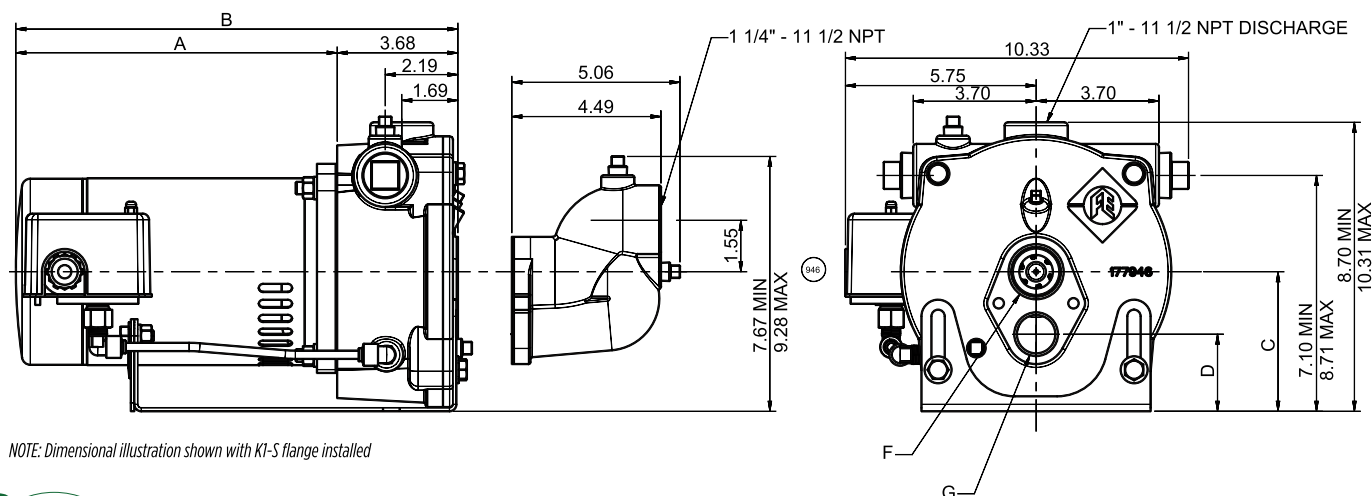
## ELECTRICAL INFORMATION

Model	HP	Voltage	S.F.A.
FCVJ05CI-P	1/2	115/230	12.4/6.2
FCVJ07CI-P	3/4		14.8/7.4
FCVJ10CI-P	1		19.9/9.95

NOTE: Deep-well installations require a 4" inside well diameter and control valve 96150951

## DIMENSIONS

Model	HP	A	B
FCVJ05CI-P	1/2	10.38"	14.06"
FCVJ07CI-P	3/4	11.00"	13.68"
FCVJ10CI-P	1	11.88"	15.56"



NOTE: Dimensional illustration shown with K1-S flange installed



brtmarine.com 800-725-3787



PROUD DISTRIBUTOR OF  
**Franklin Electric**

# JET PUMPS — CONVERTIBLE VERSAJET PRO

## SHALLOW-WELL PERFORMANCE

CVJ Pro Series				Discharge Pressure (PSI)						Shut-off Pressure (PSI)
Model	HP	Injector Kit	Total Suction Lift (ft)	30	40	50	60	70	80	
				Gallons Per Minute (GPM)						
FCVJ05CI-P	1/2	SW5	5	-	-	-	-	-	-	-
			10	16.7	14.0	8.2	2.8	-	-	65
			15	-	12.7	6.8	1.6	-	-	63
			20	-	11.3	5.7	-	-	-	61
			25	-	8.8	4.6	-	-	-	59
		SW6	5	11.8	11.8	8.6	5.3	2.9	0.8	85
			10	-	10.2	7.8	4.7	2.5	-	83
			15	-	8.7	7.0	4.2	2.2	-	81
			20	-	7.1	6.2	3.8	1.7	-	79
		SW7	25	-	-	5.5	3.4	1.2	-	77
			5	-	8.2	7.9	5.7	3.8	2.4	101
			10	-	7.1	6.9	5.3	3.6	2.2	99
			15	-	-	6.1	4.8	3.3	1.9	97
			20	-	-	5.1	4.4	3.1	1.7	95
			25	-	-	4.1	4.0	2.7	1.4	93
FCVJ07CI-P	3/4	SW4	5	21.4	18.6	11.8	5.2	-	-	68
			10	18.8	17.1	10.4	3.8	-	-	66
			15	16.2	15.4	8.9	2.4	-	-	64
			20	13.4	13.4	7.5	0.8	-	-	61
			25	10.5	10.5	6.2	-	-	-	59
		SW5	5	18.7	18.5	13.0	7.7	2.8	-	76
			10	-	16.4	11.8	6.6	1.6	-	73
			15	-	14.2	10.7	5.4	-	-	71
			20	-	11.6	9.5	4.5	-	-	69
			25	-	9.0	8.4	3.6	-	-	67
		SW6	5	-	11.7	11.1	7.8	5.2	3.1	98
			10	-	10.3	10.2	7.2	4.8	2.8	96
			15	-	-	8.8	6.7	4.4	2.5	94
			20	-	-	7.3	6.2	4.0	2.1	92
			25	-	-	5.7	5.6	3.6	1.7	90
FCVJ10CI-P	1	SW4	5	-	21.3	20.5	13.5	6.6	-	81
			10	-	18.7	18.3	11.8	5.2	-	78
			15	-	16.0	15.9	10.1	3.8	-	76
			20	-	13.3	13.3	8.6	2.0	-	73
			25	-	10.5	10.5	-	-	-	71
		SW5	5	-	-	18.3	15.2	9.5	4.4	89
			10	-	-	16.1	13.8	8.5	3.4	87
			15	-	-	13.9	12.4	7.4	2.3	85
			20	-	-	11.4	10.9	6.0	1.1	82
			25	-	-	8.8	8.8	4.7	-	80
		SW6	5	-	-	11.4	11.3	9.3	6.7	118
			10	-	-	-	10.1	8.6	6.2	116
			15	-	-	-	8.7	8.0	5.7	113
			20	-	-	-	7.2	7.1	5.3	111
			25	-	-	-	-	5.7	4.8	108

“Long ago, when men cursed and beat the ground with sticks, it was called witchcraft. Today it’s called golf.”

—Will Rogers





# JET PUMPS — CONVERTIBLE VERSAJET PRO

## DEEP-WELL PERFORMANCE

CVJ Pro Series				Discharge Pressure (PSI)						Shut-off Pressure (PSI)
Model	HP	Injector Kit	Total Suction Lift (ft)	30	35	40	45	50	55	
				Gallons Per Minute (GPM)						
FCVJ05CI-P	1/2	DW2	30	11.1	7.2	4.0	1.3	-	-	65
			40	9.3	5.7	2.7	-	-	-	60
			50	7.4	4.2	1.5	-	-	-	55
			60	5.6	2.7	-	-	-	-	51
			70	4.1	1.3	-	-	-	-	45
			80	2.7	-	-	-	-	-	40
			90	1.2	-	-	-	-	-	35
		DW1	30	-	6.6	5.0	3.4	2.2	1.3	97
			40	6.6	6.0	4.2	2.8	1.7	0.9	92
			50	6.6	5.1	3.5	2.3	1.3	-	86
			60	5.9	4.1	2.7	1.7	0.8	-	81
			70	5.0	3.4	2.2	1.2	-	-	76
			80	4.1	2.7	1.6	0.8	-	-	70
			90	3.1	2.0	1.1	-	-	-	65
FCVJ07CI-P	3/4	DW2	30	12.2	9.9	6.3	3.5	0.8	-	74
			40	11.4	8.2	4.9	2.2	-	-	69
			50	9.7	6.5	3.5	0.8	-	-	64
			60	7.9	4.8	2.1	-	-	-	59
			70	6.1	3.4	0.8	-	-	-	53
			80	4.3	2.0	-	-	-	-	48
			90	2.5	0.6	-	-	-	-	43
		DW4	30	-	7.9	5.9	4.1	2.7	1.4	94
			40	7.9	6.9	5.0	3.4	2.1	0.9	88
			50	7.5	5.8	4.1	2.6	1.4	-	83
			60	6.6	4.7	3.2	1.9	0.8	-	77
			70	5.5	3.9	2.5	1.3	-	-	71
			80	4.4	3.1	1.7	0.6	-	-	66
			90	3.3	2.3	1.0	-	-	-	60
FCVJ10CI-P	1	DW3	30	-	16.5	9.8	3.5	-	-	67
			40	-	13.0	6.9	1.0	-	-	62
			50	-	9.4	4.1	-	-	-	57
			60	-	5.9	1.2	-	-	-	52
		DW2	30	-	12.2	10.3	7.0	4.1	1.5	87
			40	-	11.4	8.6	5.5	2.8	-	82
			50	-	9.7	6.9	4.0	1.4	-	76
			60	-	8.2	5.2	2.5	-	-	71
			70	-	6.6	3.8	1.3	-	-	66
			80	-	4.9	2.5	-	-	-	60
			90	-	3.3	1.1	-	-	-	55
		DW4	30	-	7.9	7.8	6.3	4.8	3.3	111
			40	-	7.9	7.3	5.4	4.0	2.6	105
			50	-	7.8	6.3	4.6	3.2	2.0	99
			60	-	7.0	5.2	3.7	2.4	1.3	93
			70	-	6.0	4.4	3.0	1.8	0.7	87
			80	-	5.1	3.6	2.3	1.2	-	82
			90	-	4.1	2.8	1.6	0.6	-	76

"I don't know how I got over the hill without getting to the top."

—Will Rogers



brtmarine.com 800-725-3787



PROUD DISTRIBUTOR OF  
**Franklin Electric**

# JET PUMPS — CONVERTIBLE VERSAJET PRO

## ORDERING INFORMATION

### REPLACEMENT DEEP WELL PUMPS

(Where the existing deep well injector assembly remains in the well, connected to the suction & pressure pipes and only the surface pump and motor are being replaced)

1. Select the replacement pump from the following chart, based upon the pump brand, series and horsepower rating of the unit being replaced. Please consult performance charts to verify new pump will meet design expectations.

Convertible Versajet Pro with Suction Flange Factory Mounted				
Model	HP	Order Number	Suction Flange	Accepts SW Injector
CVJ05CI-S-P	1/2	96136105	K1-S	Yes
CVJ07CI-S-P	3/4	96136107		
CVJ10CI-S-P	1	96136110		
CVJ05CI-M-P	1/2	96133105	K4-M	No
CVJ07CI-M-P	3/4	96133107		
CVJ10CI-M-P	1	96133110		

### NEW DEEP WELL PUMP INSTALLATIONS (MINIMUM 4" I.D. WELL REQUIRED)

1. Select the pump from the above chart after having consulted the performance charts to verify the desired flow and pressure will be achieved from the depth from which well water is to be lifted using the following deep well injector kit.
2. To maintain sufficient back-pressure on the deep well injector, a deep well control valve should be installed on the discharge line.  
(1" MNPT x 1" FNPT connections)

Deep Well Injector	Order Number
DW1-5	96152000

*NOTE: This kit contains all nozzle & venturi combinations, plus instructions of how to choose and install the correct ones for your specific application*

Deep Well Control Valve	Order Number
DW-CV	96150951

"Never miss a good chance to shut up."

—Will Rogers



PROUD DISTRIBUTOR OF  
**Franklin Electric**

[brtmarine.com](http://brtmarine.com) 800-725-3787

# JET PUMPS — CONVERTIBLE VERSAJET

## ORDERING INFORMATION (CONT.)

### NEW OR REPLACEMENT SHALLOW WELL PUMP INSTALLATIONS

1. Select the pump with K1-S suction flange the from the following chart, based upon the horsepower rating and performance needed. Note that only the K1-S suction flange will allow the shallow well injector kit to bolt up to it successfully.

Convertible Versajet with Suction Flange Factory Mounted				
Model	HP	Order Number	Suction Flange	Accepts SW Injector
CVJ05CI-S-P	1/2	96136105	K1-S	Yes
CVJ07CI-S-P	3/4	96136107		
CVJ10CI-S-P	1	96136110		

2. Order the following shallow well injector kit to fit the pump selected. This kit contains nozzles and venturi to enable it to fit all shallow well applications described in the performance charts.

Shallow Well Injector	Order Number
SW1-7	96151000

*NOTE: This kit contains all nozzle & venturi combinations, plus instructions of how to choose and install the correct ones for your specific application*

### ALTERNATE SUCTION FLANGE KITS

1. Should an alternate suction flange kit be needed to retrofit a pump to enable it to serve a specific application, the following are available and include all necessary hardware for mounting.

Suction Flange Model	Order Number
K1-S (Sta-Rite)	96150946
K2-G (Goulds)	96150947
K3-F (F&W)	96150948
K4-M (Myers)	96150949
K5-J (Jacuzzi)	96150952

“The quickest way to double your money is to fold it and put it back into your pocket.”

—Will Rogers



brtmarine.com 800-725-3787



PROUD DISTRIBUTOR OF  
**Franklin Electric**

# JET PUMPS — CONVERTIBLE PRO (RM2) SERIES

## FEATURES

- Heavy-duty cast iron case with 1-1/4" inlet and (3) 1" outlets
- Stainless steel impeller ensures optimum durability
- Thermoplastic diffuser is precision molded for optimum efficiency
- Each pump factor equipped with internal shallow well injector easily replaced with bypass plug for deep well operation
- Shaft coupling designed for easy removal of keyed shaft motor
- Carbon/ceramic faced mechanical shaft seal with nitrile elastomer ensures positive sealing at all pressures
- High service factor 56C-frame motor for maximum performance
- Adjustable pressure switch is factory installed and set at 30/50 psi
- Maximum temperature of 140 °F/60 °C; 150 PSI maximum working pressure



## ORDERING INFORMATION

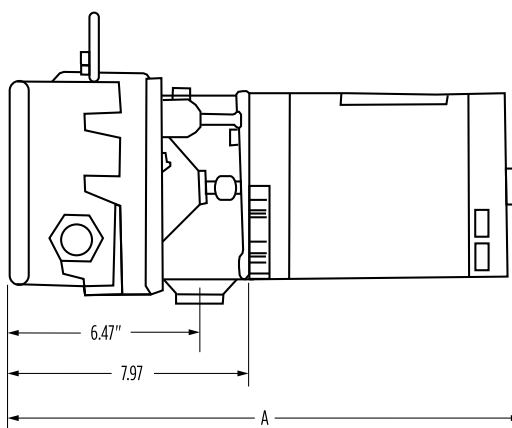
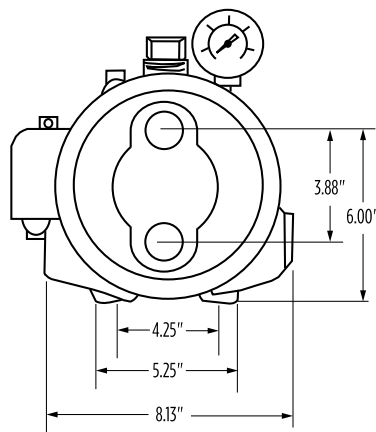
Model	HP	Phase	Voltage	S.F.A	Pump Unit		Deep-Well Injector		
					Order No.	Wt. (lbs)	Total Suction Lift (ft)	Order No.	Wt. (lbs)
FP05CI-C	1/2	1	115/230	11.8/5.9	91140005	48	30-60	147E1120	7
							50-100	147E0915	
FP07CI-C	3/4			14.8/7.4	91140007	51	30-60	147E1023	
							50-100	147E1118	
FP1CI-C	1	3	208-230/460	14.4/7.7	91140010	53	30-60	147E1125	
FP1CI-C	1			4.6/2.3	91112011	53	50-100	147E1120	

NOTES: Order deep-well injector separately; minimum inside well diameter requirement of 4" for deep-well injectors; parallel pipe injectors are required for deep well installations

## DIMENSIONS

Model	HP	A
FP05CI-C	1/2	18.65"
FP07CI-C	3/4	19.15"
FP1CI-C	1	19.65"

NOTE: Dimensions will vary according to motor manufacturer





# JET PUMPS — CONVERTIBLE PRO (RM2) SERIES

## SHALLOW-WELL PERFORMANCE

1" Dis. x 1-1/4" Suc.			Discharge Pressure (PSI)											Shut-off Pressure (PSI)
Model	HP	Total Suction Lift (ft)	30	35	40	45	50	55	60	65	70	75	80	
			Gallons Per Minute (GPM)											
FP05CI-C	1/2	5	12.5	9.8	7.1	4.7	2.5	-	-	-	-	-	-	56.8
		10	-	8.6	6.0	3.6	1.5	-	-	-	-	-	-	54.2
		15	-	7.4	4.8	2.5	0.5	-	-	-	-	-	-	51.6
		20	-	6.0	3.5	1.6	-	-	-	-	-	-	-	49.6
		25	-	4.5	2.2	0.6	-	-	-	-	-	-	-	47.5
FP07CI-C	3/4	5	-	15.1	12.9	9.5	6.2	3.1	-	-	-	-	-	60.3
		10	-	-	11.7	8.2	4.9	2.0	-	-	-	-	-	58.4
		15	-	-	10.4	6.8	3.6	-	-	-	-	-	-	56.4
		20	-	-	8.4	5.5	2.4	-	-	-	-	-	-	54.1
		25	-	-	-	4.1	1.2	-	-	-	-	-	-	51.8
FP1CI-C	1	5	-	-	-	16.8	14.0	11.1	8.1	5.0	1.8	-	-	73.0
		10	-	-	-	-	12.7	9.9	7.0	3.9	-	-	-	71.3
		15	-	-	-	-	11.4	8.7	5.9	2.8	-	-	-	69.5
		20	-	-	-	-	-	7.1	4.2	-	-	-	-	66.7
		25	-	-	-	-	-	5.5	2.5	-	-	-	-	63.8
FP1CI-C (High Head)	1	5	-	-	-	-	-	11.2	8.9	6.8	4.9	3.1	1.4	84.2
		10	-	-	-	-	-	10.0	7.9	5.9	4.0	2.2	-	81.6
		15	-	-	-	-	-	8.8	6.8	4.9	3.1	1.3	-	79.0
		20	-	-	-	-	-	-	5.5	3.9	2.1	0.7	-	76.0
		25	-	-	-	-	-	-	4.2	2.8	1	-	-	72.9

## DEEP-WELL PERFORMANCE

1" Dis. x 1-1/4" Suc. 1" Drive Pipe				Discharge Pressure (PSI)									Shut-off Pressure (PSI)	Inj. Min. Operating Pressure	
Model	HP	Injector Order No.	Total Suction Lift (ft)	30	35	40	45	50	55	60	65	70			
				Gallons Per Minute (GPM)											
FP05CI-C	1/2	147E1120	30	9.0	7.0	5.5	4.0	2.5	1.5	-	-	-	65	18	
			40	7.5	6.0	4.0	3.0	1.5	-	-	-	-	59		
			50	6.0	4.5	3.0	2.0	1.0	-	-	-	-	56		
			60	5.0	3.5	2.0	1.0	-	-	-	-	-	52		
		147E0915	50	6.0	5.0	4.0	3.0	2.5	2.0	1.0	-	-	-	74	23
			60	5.0	4.0	3.5	2.5	2.0	1.0	-	-	-	-	70	
			70	4.0	3.5	2.5	2.0	1.5	-	-	-	-	-	65	
			80	3.5	3.0	2.0	1.5	1.0	-	-	-	-	-	61	
			90	3.0	2.0	1.5	1.0	-	-	-	-	-	-	57	
			100	2.5	1.5	1.0	-	-	-	-	-	-	-	52	
FP07CI-C	3/4	147E1023	30	15.5	13.5	11.0	8.5	6.5	4.0	2.0	-	-	66	18	
			40	13.5	11.5	9.0	7.0	4.5	2.4	-	-	-	61		
			50	11.0	9.5	7.0	5.0	3.0	-	-	-	-	57		
			60	9.0	7.5	5.0	3.0	1.0	-	-	-	-	53		
		147E1118	50	9.0	8.0	7.0	6.0	4.5	3.5	3.0	2.0	1.0	80	23	
			60	8.0	7.0	6.0	4.5	4.0	3.0	2.0	1.5	-	77		
			70	6.5	5.5	4.5	3.5	3.0	2.0	1.0	-	-	72		
			80	6.0	5.0	4.0	3.0	2.0	1.5	-	-	-	67		
			90	5.0	4.0	3.0	2.0	1.5	-	-	-	-	63		
			100	4.0	3.0	2.5	1.5	1.0	-	-	-	-	30		
FP1CI-C	1	147E1125	30	19.5	17.0	14.5	12.0	9.5	7.0	5.0	-	-	72	30	
			40	17.5	15.0	12.5	10.0	7.5	5.0	3.0	-	-	67		
			50	15.5	13.0	10.5	8.0	5.5	3.5	1.0	-	-	63		
			60	13.0	10.5	8.5	6.0	3.5	1.5	-	-	-	59		
		147E1120	50	-	11.0	9.5	8.0	6.5	5.0	4.0	3.0	2.0	82	36	
			60	-	10.0	8.0	7.0	5.5	4.0	3.0	2.0	1.0	78		
			70	-	8.0	7.0	6.0	4.5	3.0	2.0	1.0	-	73		
			80	-	7.0	6.0	4.5	3.5	2.0	1.5	-	-	70		
			90	-	6.0	5.0	3.5	2.5	1.5	-	-	-	65		
			100	-	5.0	4.0	3.0	1.5	-	-	-	-	61		



# JET PUMPS — CONVERTIBLE C SERIES

## FEATURES

- Heavy-duty cast iron volute and motor bracket for long life
- 1-1/2" inlet, (2) 3/4" outlets and (1) 1" outlet - all models
- 1/4" NPT ports for pressure gauge and AVC connection
- Stainless steel impeller for high performance and durability
- Thermoplastic diffuser is precision molded for efficiency
- Screw-in injector & bypass plug for easy conversion from shallow- to deep-well installation
- Stainless steel shaft on 56J threaded shaft motor for direct mounting of impeller
- Carbon/ceramic faced mechanical seal with nitrile elastomer ensures leak-proof operation at all discharge pressures
- Adjustable pressure switch is factory installed and set to 30-50 PSI
- Maximum temperature of 140 °F/60 °C; 75 PSI maximum working pressure
- Deep well injector kits must be ordered separately



## ORDERING INFORMATION

Model No.	HP	Voltage	S.F.A.	Pump Unit		Deep-Well Injector		
				Order No.	Wt. (lbs)	Total Suction Lift (ft)	Order No.	Wt. (lbs)
FE05CI-C	1/2	115/230	9.4/4.8	91060020	45	20-60	147E1018	7
						12.8/6.4	147E1117	
						90-120	147E1115	
FE07CI-C	3/4		12.8/6.4	91060053	50	20-60	147E1124	
						50-90	147E1019	
						80-120	147E0914	

“If you find yourself in a hole, stop digging.”

—Will Rogers



# JET PUMPS — CONVERTIBLE C SERIES

## SHALLOW-WELL PERFORMANCE

C Series			Discharge Pressure (PSI)						Shut-off Pressure (PSI)
Model No.	HP	Total Suction Lift (ft)	30	35	40	45	50	55	
			Gallons Per Minute (GPM)						
FE05CI-C	1	5	9.7	9.5	9.2	7.6	5.5	3.6	66.1
		10	8.4	8.2	8.0	6.5	4.5	2.7	64.0
		15	7.0	6.9	6.7	5.3	3.4	1.8	61.9
		20	5.2	5.2	5.1	4.0	2.6	0.9	58.7
		25	3.4	3.4	3.4	2.7	1.8	0.0	55.4
FE07CI-C	3/4	5	15.8	15.7	14.1	10.7	7.5	4.0	61
		10	15.0	14.9	12.8	9.2	6.0	2.5	59
		15	14.0	13.9	11.3	7.9	4.5	1.0	57
		20	12.5	12.4	9.6	6.4	3.0	–	54
		25	10.5	10.4	8.3	4.9	1.5	–	52

## DEEP-WELL PERFORMANCE

C Series				Discharge Pressure (PSI)					Shut-off Pressure (PSI)
Model No.	HP	Injector Order No.	Total Suction Lift (ft)	30	35	40	45	50	
				Gallons Per Minute (GPM)					
FE05CI-C	1/2	147E1018	20	10.5	8.5	7.0	6.0	4.5	61
			30	8.5	7.0	5.5	4.0	3.5	59
			40	7.0	5.5	4.5	3.5	2.5	57
			50	5.5	4.5	4.0	3.0	2.0	55
			60	4.5	3.5	3.0	2.0	1.0	53
		147E1117	60	5.0	4.0	3.5	3.0	2.5	70
			70	4.0	3.5	3.0	2.5	2.0	66
			80	3.5	3.0	2.5	2.0	1.5	61
			90	3.0	2.5	2.0	1.5	1.0	56
		147E1115	90	3.0	2.5	2.0	1.5	1.0	64
			100	2.5	2.0	1.5	1.0	0.5	60
			110	2.0	1.5	1.0	0.5	-	56
120	1.5		1.0	0.5	-	-	52		
FE07CI-C	3/4	147E1124	20	16	14.0	12.0	10.0	8.0	69
			30	14	12.0	10.0	8.0	6.0	64
			40	11.5	10.0	7.5	6.0	4.0	59
			50	10	8.0	6.0	4.0	2.0	55
			60	7.5	6.0	4.0	2.0	-	50
		147E1019	50	9.5	8.5	7.5	6.5	5.5	74
			60	8.0	7.0	6.0	5.0	4.0	70
			70	7.0	6.0	5.0	4.0	3.0	66
			80	6.0	5.0	4.0	3.0	2.0	61
		147E0914	90	4.5	3.5	2.5	2.0	1.0	56
			80	6.0	4.0	3.5	3.0	3.0	87
			90	4.0	3.5	3.5	3.0	2.5	83
			100	3.5	3.5	3.0	2.5	2.0	80
			110	3.5	3.0	2.5	2.0	2.0	76
			120	2.5	2.5	2.0	2.0	1.5	72

“Whatever you do in life, surround yourself with smart people who’ll argue with you.”

—John Wooden



brtmarine.com 800-725-3787



PROUD DISTRIBUTOR OF  
**Franklin Electric**

# SELF-PRIMING PUMPS

Irrigation and sprinkler pumps are designed for supplying large volumes of water from a lake or pond supply to an irrigation system. They can also be in high-volume applications transferring water between locations.

## PRODUCT FAMILY

- Turf Boss
- FBSE Series

## APPLICATIONS

- Agricultural Irrigation
- Lawn Sprinkling
- Industrial Dewatering
- HVAC Systems (Heat Pump and Air Conditioning)
- Water Transfer and Supply
- Freshwater Pumping
- Commercial/Industrial Liquid Transfer
- Dewatering
- Flood Irrigation
- Livestock Watering
- Septic Tank Installations (in areas with drainage problems)



Turf Boss

FBSE Series

“Talent is God given. Be humble. Fame is man-given. Be grateful. Conceit is self-given. Be careful.”

—John Wooden



PROUD DISTRIBUTOR OF  
**Franklin Electric**

[brtmarine.com](http://brtmarine.com) 800-725-3787

# SELF-PRIMING IRRIGATION PUMPS — TURF BOSS, 1-2 HP

## FEATURES

- Self-priming design with the ability to lift water from a depth of 25'
- Easily serviced through a back pull-out design, which leaves all the plumbing and both the pump's base and case undisturbed in their original location
- Rugged cast iron case ensures optimum durability, quiet operation, and long life
- Modified PPO hydraulic components and floating stainless steel impeller eye-seal ensures dependable and efficient operation
- Optional 304 stainless steel impeller available for maximum durability
- 1- and 3-phase motors available with dual voltage on smaller horsepower models; three-phase inverter duty rated
- Phenolic/Ceramic mechanical shaft seal with nitrile elastomers and 18-8SS hardware ensures positive sealing and longevity
- Integral 1" NPT priming plug and built-in drain plug for easy winterizing and servicing
- Shut-off pressures to 130 feet, flow rates to 70 gpm, and water temperatures to 120 °F



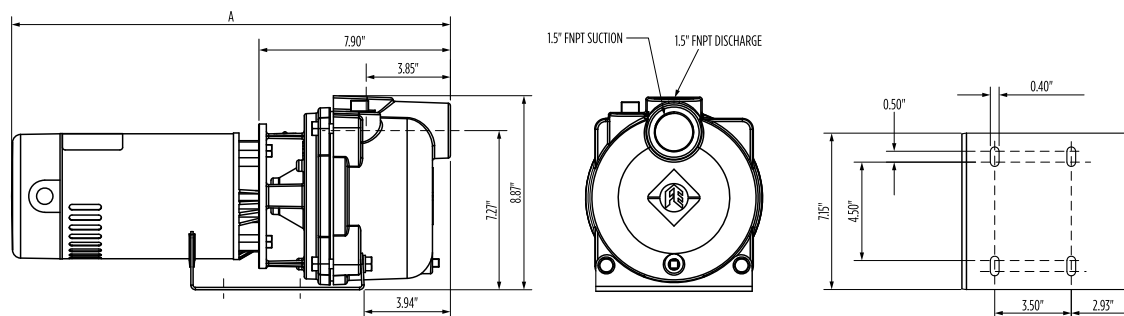
## ORDERING INFORMATION

Complete Pump							
Suc. x Dis. (FNPT)	Phase	Voltage	S.F.A.	HP	Model	Order No.	Wt. (lbs)
1-1/2" x 1-1/2"	1	115/230	16.2/8.1	1	FTB1CI	92980010	50
		115/230	21.4/10.7	1-1/2	FTB15CI	92980015	57
		230	12.9	2	FTB2CI	92980020	58
	1	115/230	16.2/8.1	1	FTB1CI-SSI*	92981010	52
		115/230	21.4/10.7	1-1/2	FTB15CI-SSI*	92981015	59
		230	12.9	2	FTB2CI-SSI*	92981020	60
	3	208-230/460	4.0/2.0	1	FTB1CI-SSI-T*	92983010	51
		208-230/460	6.8/3.4	1-1/2	FTB15CI-SSI-T*	92983015	55
		208-230/460	8.6/4.3	2	FTB2CI-SSI-T*	92983020	57

\*Stainless steel impeller

## DIMENSIONS

Model	HP	A (1-Phase)	A (3-Phase)
FTB1CI	1	20.00"	23.40"
FTB15CI	1-1/2	21.60"	25.00"
FTB2CI	2	21.60"	25.00"



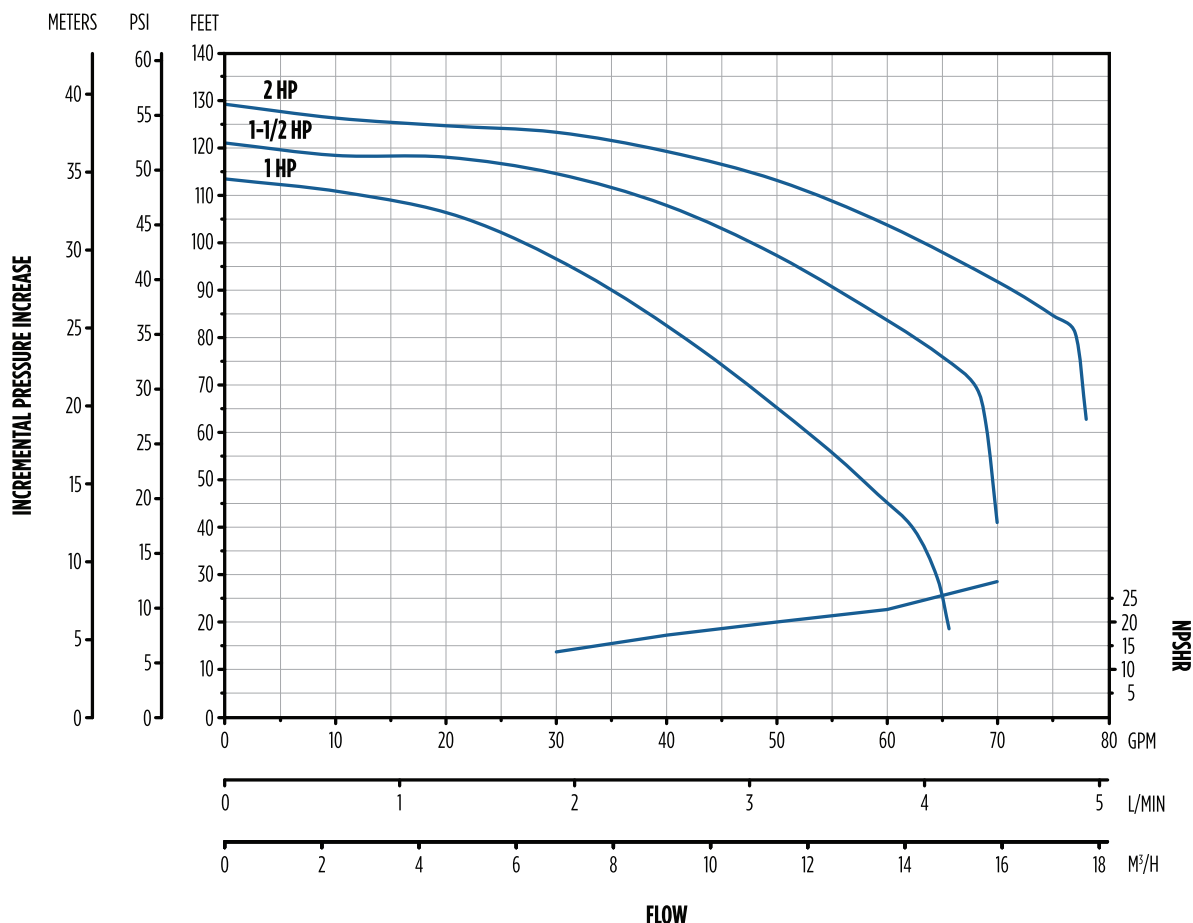
brtmarine.com 800-725-3787



PROUD DISTRIBUTOR OF  
**Franklin Electric**

# SELF-PRIMING IRRIGATION PUMPS — TURF BOSS

## PERFORMANCE: 1-2 HP



Model	HP	Total Suction Lift (ft)	Discharge Pressure (PSI)							Shut-off Pressure (PSI)
			20	25	30	35	40	45	50	
			Gallons Per Minute (GPM)							
FTB1CI	1	5	53.0	47.0	42.0	36.0	27.0	13.0	-	46
		10	49.0	43.0	38.0	32.0	23.0	-	-	44
		15	45.0	40.0	35.0	28.0	17.0	-	-	42
		20	38.0	33.0	28.0	24.0	-	-	-	40
		25	28.0	23.0	18.0	-	-	-	-	38
FTB15CI	1-1/2	5	65.0	64.0	63.0	58.0	48.0	37.0	-	50
		10	58.0	58.0	57.0	55.0	45.0	26.0	-	48
		15	50.0	49.0	48.0	48.0	40.0	-	-	46
		20	41.0	40.0	39.0	38.0	32.0	-	-	44
		25	29.0	28.0	28.0	27.0	17.0	-	-	42
FTB2CI	2	5	70.0	69.0	69.0	68.0	65.0	53.0	35.0	52
		10	61.0	60.0	60.0	59.0	58.0	47.0	-	50
		15	52.0	51.0	50.0	49.0	48.0	37.0	-	49
		20	41.0	40.0	39.0	38.0	35.0	-	-	47
		25	29.0	28.0	27.0	25.0	22.0	-	-	45

"If you don't have time to do it right, when will you have time to do it over?"

—John Wooden



PROUD DISTRIBUTOR OF  
**Franklin Electric**

[brtmarine.com](http://brtmarine.com) 800-725-3787



# SELF-PRIMING IRRIGATION PUMPS — TURF BOSS, 3-5 HP

## FEATURES

- **Volute:** Built-in suction check valve facilitates priming and prevents back flow or siphoning
- **Impeller:** Cast iron; combines efficient operation with durable construction to allow for use in a broad range of pumping applications
- **Seal:** Standard carbon/ceramic faces; FKM elastomers; 300 series stainless steel components
- **Diffuser:** Cast iron is utilized in all models to improve pump efficiency
- **Motor:** Standard JM frame ODP & TEFC options



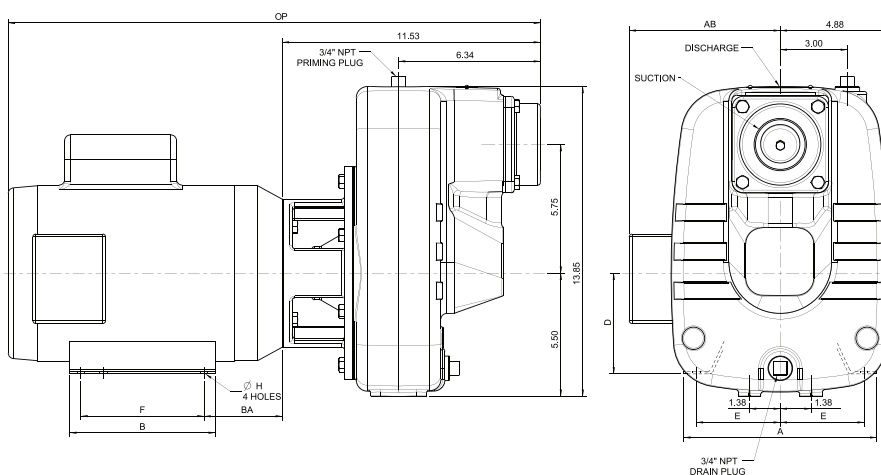
## ORDERING INFORMATION

Model	ECNL	HP	Pump Size (Suc. x Dis.)	Phase	Volts	S.F.A	Pump Unit	
							Order No.	Wt. (lbs)
FTB3CI	ODP	3	2" x 2"	1	115/230	33.4/16.7	92980030	120
FTB3CI-E	TEFC	3	2" x 2"	1	115/230	33.4/16.7	92980130	123
FTB3CI-T	ODP	3	2" x 2"	3	230/460	8.4/4.2	92980035	93
FTB3CI-TE	TEFC	3	2" x 2"	3	230/460	8.2/4.1	92980135	94
FTB3CI-T5E	TEFC	3	2" x 2"	3	575	3.3	92980136	94
FTB5CI	ODP	5	2-1/2" x 2"	1	230	25.3	92980050	135
FTB5CI-E	TEFC	5	2-1/2" x 2"	1	230	19	92980150	140
FTB5CI-T	ODP	5	2-1/2" x 2"	3	230/460	13.8/6.9	92980055	111
FTB5CI-TE	TEFC	5	2-1/2" x 2"	3	230/460	13.4/6.7	92980155	128
FTB5CI-T5E	TEFC	5	2-1/2" x 2"	3	575	5.4	92980156	121

## DIMENSIONS

Model	Enclosure	Pump Size (Suc. x Dis.)	Dimensions (in.)								
			A	B	D	E	F	H	AB	BA	OP
FTB3CI	ODP	2" X 2"	8.63	6.50	4.50	3.75	5.50	0.41	6.75	3.50	23.78
FTB3CI-E	TEFC	2" X 2"	8.63	6.50	4.50	3.75	5.50	0.44	6.87	3.50	29.59
FTB3CI-T	ODP	2" X 2"	6.50	5.94	3.50	2.75	5.00	0.34	5.62	2.88	22.41
FTB3CI-TE	TEFC	2" X 2"	6.50	5.94	3.50	2.75	5.00	0.38	5.74	2.88	23.57
FTB3CI-T5E	TEFC	2" X 2"	6.50	5.94	3.50	2.75	5.00	0.38	5.74	2.88	23.57
FTB5CI	ODP	2 1/2" X 2"	8.63	6.50	4.50	3.75	5.50	0.41	6.75	3.51	23.78
FTB5CI-E	TEFC	2 1/2" X 2"	8.63	6.50	4.50	3.75	5.50	0.45	6.87	3.50	26.83
FTB5CI-T	ODP	2 1/2" X 2"	8.63	6.50	4.50	3.75	5.50	0.41	6.74	3.50	23.78
FTB5CI-TE	TEFC	2 1/2" X 2"	8.63	6.50	4.50	3.75	5.50	0.41	6.87	3.50	25.34
FTB5CI-T5E	TEFC	2 1/2" X 2"	8.63	6.50	4.50	3.75	5.50	0.41	6.87	3.50	25.34

NOTE: Dimensions are for estimating purposes only



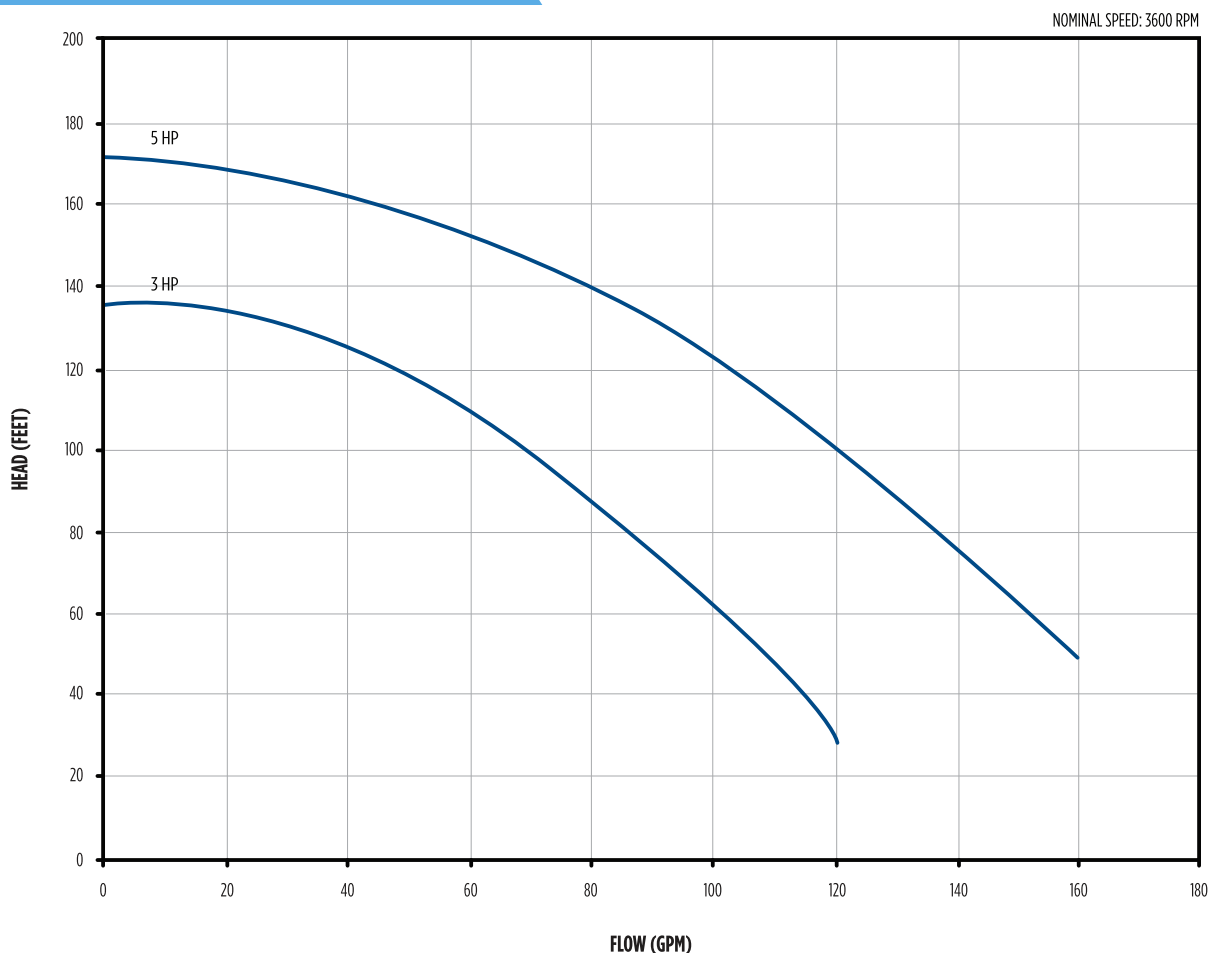
brtmarine.com 800-725-3787



PROUD DISTRIBUTOR OF  
**Franklin Electric**

# SELF-PRIMING IRRIGATION PUMPS — TURF BOSS

PERFORMANCE: 3-5 HP



Model	HP	Total Suction Lift (ft)	Discharge Pressure (PSI)									Shut-off Pressure (PSI)
			25	30	35	40	45	50	55	60	65	
			Gallons Per Minute (GPM)									
FTB3CI	3	5	99	90	81	70	60	47	-	-	-	56
		10	95	86	77	66	54	-	-	-	-	54
		15	91	82	73	62	49	-	-	-	-	51
		20	87	78	68	56	42	-	-	-	-	49
		25	84	74	63	51	-	-	-	-	-	47
FTB5CI	5	5	149	141	131	122	112	102	89	74	55	71
		10	146	137	127	118	108	97	82	65	-	69
		15	142	132	124	114	104	92	76	57	-	67
		20	138	129	119	109	98	84	68	-	-	65
		25	134	125	116	105	92	78	60	-	-	63

"If you're not making mistakes, then you're not doing anything. I'm positive that a doer makes mistakes."

—John Wooden



PROUD DISTRIBUTOR OF  
**Franklin Electric**

[brtmarine.com](http://brtmarine.com) 800-725-3787

# SELF-PRIMING EFFLUENT PUMPS — FBSE SERIES

## FEATURES

- Cast iron volute with tapped openings for priming, venting, and draining
- Semi-open cast iron impeller that is blind-hold tapped so liquid will not corrode the shaft; Ideal for handling fertilizer, salt water, dirty water, and other liquids
- Mechanical seal with carbon/ceramic faces, FKM elastomers, and 300-series stainless steel components
- Industry-standard square flange design motor 1/2 - 2HP models
- 3HP units utilize 56J shaft motors
- Capacities to 50 gpm; Heads to 92 feet
- 75 psi maximum working pressure; 120 °F maximum temperature
- Clockwise rotation when viewed from motor end



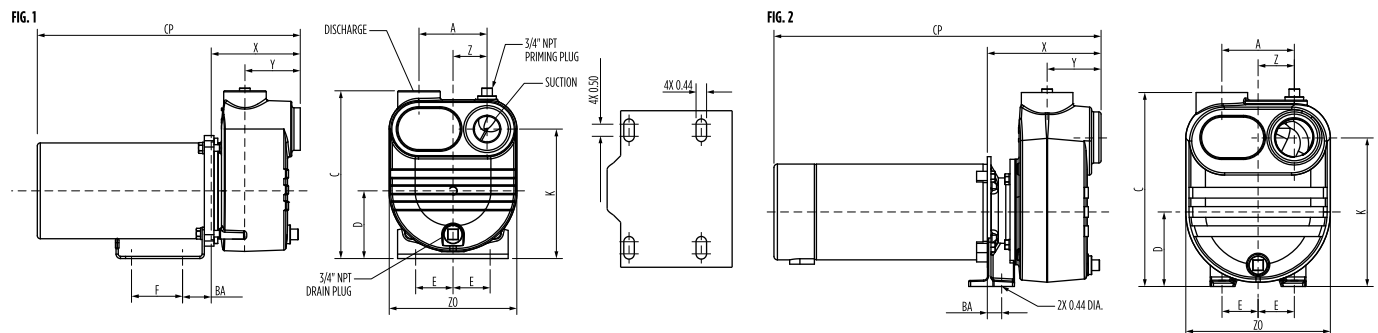
## ORDERING INFORMATION

Complete Pump						
Model	HP	PH	Volts	Dis. x Suc. (NPT)	Order No.	Wt. (lbs)
FBSE-50-S	1/2	1	115/230	1-1/4" x 1-1/4"	92931005	41
FBSE-75-S	3/4	1	115/230	1-1/4" x 1-1/4"	92931007	42
FBSE-100-S	1	1	115/230	1-1/4" x 1-1/4"	92931010	46
FBSE-150-S	1-1/2	1	115/230	2" x 2"	92931015	52
FBSE-200-S	2	1	230	2" x 2"	92931020	60
FBSE-300-S	3	1	230	2" x 2"	92931030	70
FBSE-300-T	3	3	208-230/460	2" x 2"	92933030	60

## DIMENSIONS

Model	HP	Fig.	Dis. x Suc. (NPT)	CP	A	BA	C	D	E	F	K	X	Y	Z	ZO
FBSE-50-S	1/2	1	1-1/4" x 1-1/4"	15.46"	4.00"	1.69"	9.86"	3.98"	2.20"	3.00"	7.61"	5.23"	3.25"	2.00"	7.50"
FBSE-75-S	3/4	1	1-1/4" x 1-1/4"	15.96"	4.00"	1.69"	9.86"	3.98"	2.20"	3.00"	7.61"	5.23"	3.25"	2.00"	7.50"
FBSE-100-S	1	1	1-1/4" x 1-1/4"	16.96"	4.00"	1.69"	9.86"	3.98"	2.20"	3.00"	7.61"	5.23"	3.25"	2.00"	7.50"
FBSE-150-S	1-1/2	1	2" x 2"	17.91"	4.26"	1.69"	11.00"	3.98"	2.20"	3.00"	8.36"	5.44"	3.17"	2.13"	8.50"
FBSE-200-S	2	1	2" x 2"	19.16"	4.26"	1.69"	11.00"	3.98"	2.20"	3.00"	8.36"	5.44"	3.17"	2.13"	8.50"
FBSE-300-S	3	2	2" x 2"	19.23"	4.26"	0.85"	11.44"	4.38"	2.13"	N/A	8.37"	6.69"	3.17"	2.13"	8.50"
FBSE-300-T	3	2	2" x 2"	20.43"	4.26"	0.85"	11.44"	4.38"	2.13"	N/A	8.37"	6.69"	3.17"	2.13"	8.50"

NOTE: Dimensions are for estimating purposes only



“Things turn out best for the people who make the best of the way things turn out.”

—John Wooden



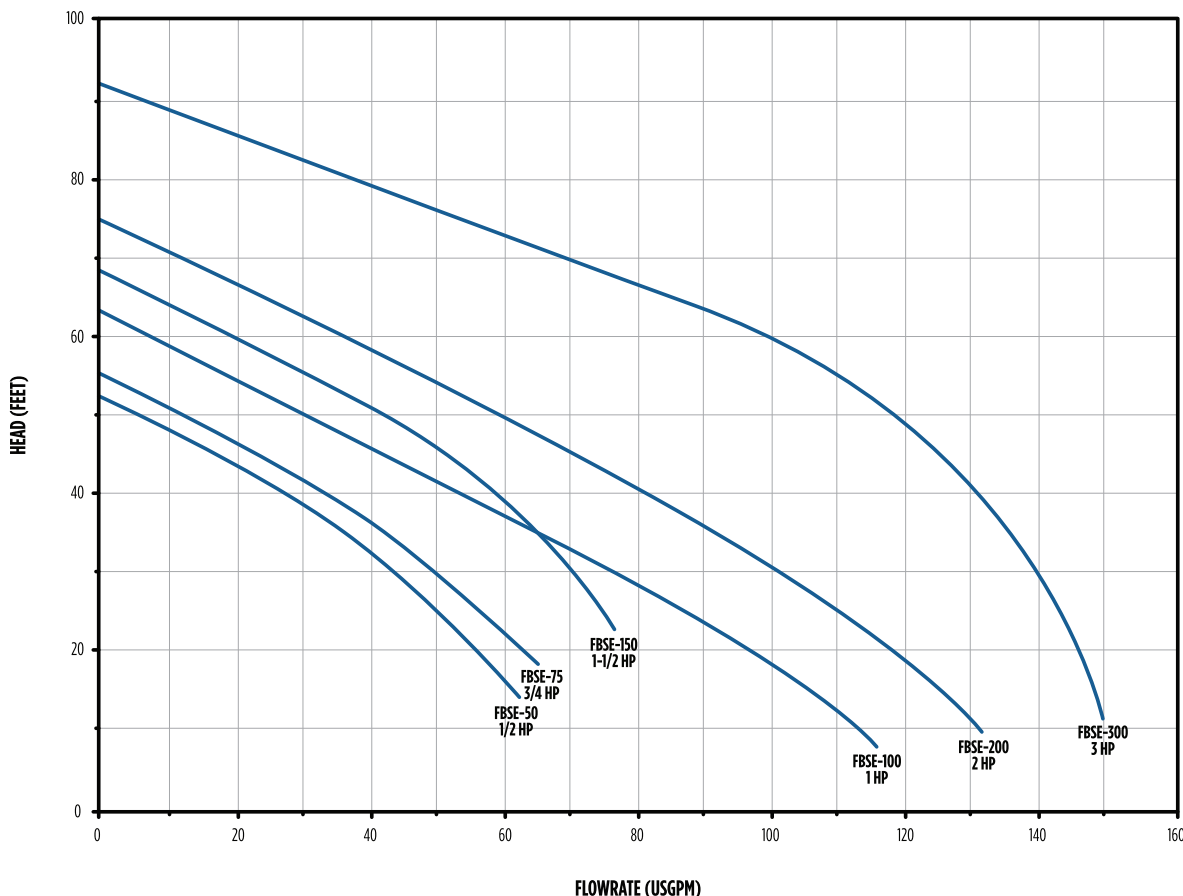
brtmarine.com 800-725-3787



PROUD DISTRIBUTOR OF  
**Franklin Electric**

# SELF-PRIMING EFFLUENT PUMPS — FBSE SERIES

## PERFORMANCE



Model	HP	Shut-off Head (ft)	Discharge Pressure (PSI)						
			10	20	30	40	50	60	70
			Gallons Per Minute (GPM)						
FBSE-50	1/2	52	-	56.0	44.0	27.0	6.0	-	-
FBSE-75	3/4	55	-	63.0	49.0	34.0	12.0	-	-
FBSE-100	1	64	113.0	97.0	76.0	54.0	30.0	8.0	-
FBSE-150	1-1/2	68	-	-	70.0	58.0	42.0	19.0	-
FBSE-200	2	75	131.0	118.0	101.0	82.0	59.0	36.0	12.0
FBSE-300	3	92	-	145.0	139.0	132.0	119.0	100.0	69.0

“Be true to yourself, help others, make each day your masterpiece, make friendship a fine art, drink deeply from good books—especially the Bible—build a shelter against a rainy day, give thanks for your blessings, and pray for guidance every day.”

—John Wooden



PROUD DISTRIBUTOR OF  
**Franklin Electric**

[brtmarine.com](http://brtmarine.com) 800-725-3787

# BOOSTER PUMPS

Franklin's booster pumps feature a stainless steel construction and are designed to meet any pressure-boosting need. The selection is available in a range of horsepower sizes, in single- and three-phase configurations, and offer high performance for a wide variety of applications. Whether boosting water pressure from a city main or a private water system, Franklin's quality pumps will fulfill the task.

## PRODUCT FAMILY

- MH Series
- BT4 Series
- BT4 Series 56C Pump Ends

## APPLICATIONS

- Pressure Boosting (from city mains or private water systems)
- Water Transfer and Circulation
- Lawn and Crop Irrigation
- Residential Lawn Sprinkler Systems
- Reverse Osmosis (MH/SS BT4)
- Filtration (SS BT4)
- Pressure Washing
- Poultry Houses
- Equipment Spray Cooling
- Evaporative Cooling System Mistlers
- General Purpose Plumbing
- Aeration
- Wash-Down Applications
- Commercial Water Features and Fountains
- Cisterns



MH Series



BT4 Series



BT4 Series 56C Pump Ends

"There are many things that are essential to arriving at true peace of mind, and one of the most important is faith, which cannot be acquired without prayer."

—John Wooden



[brtmarine.com](http://brtmarine.com) 800-725-3787



PROUD DISTRIBUTOR OF  
**Franklin Electric**

# MULTI-STAGE BOOSTER PUMPS — MH SERIES

## FEATURES

- All 300-series stainless steel wet end
- Mechanical seal with carbon/ceramic faces, FKM elastomers, and 300-series stainless steel components
- Industry proven, UL778 approved, indoor/outdoor rated square-flange 2-compartment motors; three-phase inverter duty rated
- Available in 15, 30, and 45 gpm nominal flow ratings
- Maximum fluid temperatures up to 225 °F / 107°C; maximum working pressure of 140 psi.
- Capable of suction lifts of up to 10 feet



## ORDERING INFORMATION

Dis. x Suc. (NPT)	Phase	Voltage	GPM	Stage	HP	S.F.A.	Model No.	Order No.	Wt. (lbs)
1" x 1-1/4"	1	115/230	15	2	1/2	9.4/4.7	15FMH05S2	96061500	22
				3	3/4	12.4/6.2	15FMH07S3	96061501	25
				4	1	14.8/7.4	15FMH1S4	96061502	29
				5	1-1/2	19.9/9.95	15FMH1S5S	96061503	35
				6	2	24.0/12.0	15FMH2S6	96061504	40
1" x 1-1/4"			30	2	3/4	12.4/6.2	30FMH07S2	96063000	25
				3	1	14.8/7.4	30FMH1S4	96063001	33
				4	1-1/2	19.9/9.95	30FMH1S5S4	96063002	37
				5	2	24.0/12.0	30FMH2S5	96063003	41
1-1/4" x 1-1/2"			45	2	1-1/2	19.9/9.95	45FMH1S5S2	96064500	33
				3	2	24.0/12.0	45FMH2S3	96064501	39
1" x 1-1/4"	3	208-230/460	15	2	1/2	3.0/1.5	15FMH05S2-T	96061510	24
				3	3/4	3.6/1.8	15FMH07S3-T	96061511	24
				4	1	4.7/2.35	15FMH1S4-T	96061512	29
				5	1-1/2	6.8/3.4	15FMH1S5S-T	96061513	34
				6	2	8.5/4.25	15FMH2S6-T	96061514	42
1" x 1-1/4"			30	2	3/4	3.6/1.8	30FMH07S2-T	96063010	24
				3	1	4.7/2.35	30FMH1S3-T	96063011	33
				4	1-1/2	6.8/3.4	30FMH1S5S4-T	96063012	36
				5	2	8.5/4.25	30FMH2S5-T	96063013	43
1-1/4" x 1-1/2"			45	2	1-1/2	6.8/3.4	45FMH1S5S2-T	96064510	32
				3	2	8.5/4.25	45FMH2S3-T	96064511	41

"Success comes from knowing that you did your best to become the best that you are capable of becoming."

—John Wooden



PROUD DISTRIBUTOR OF  
**Franklin Electric**

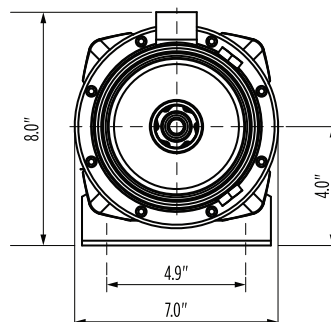
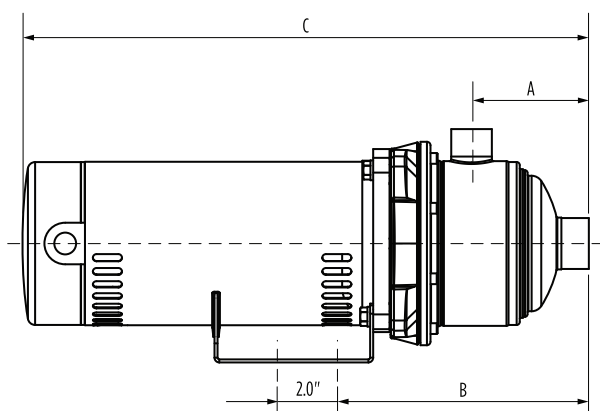
[brtmarine.com](http://brtmarine.com) 800-725-3787



# MULTI-STAGE BOOSTER PUMPS — MH SERIES

## DIMENSIONS

Phase	GPM	Stage	HP	Model	A	B	C
1	15	2	1/2	15FMH05S2	4.06"	8.75"	16.75"
		3	3/4	15FMH07S3	4.06"	8.75"	17.50"
		4	1	15FMH1S4	5.00"	9.69"	19.07"
		5	1-1/2	15FMH1S5S	5.94"	10.64"	20.81"
		6	2	15FMH2S6	6.89"	11.58"	22.59"
		2	3/4	30FMH07S2	4.06"	8.75"	17.50"
	30	3	1	30FMH1S3	4.06"	8.75"	19.00"
		4	1-1/2	30FMH1S4	5.00"	9.69"	20.70"
		5	2	30FMH2S5	5.94"	10.64"	21.64"
	45	2	1-1/2	45FMH1S2S	4.65"	9.34"	19.67"
		3	2	45FMH2S3	4.65"	9.34"	20.50"
3	15	2	1/2	15FMH05S2-T	4.06"	8.75"	16.97"
		3	3/4	15FMH07S3-T	4.06"	8.75"	17.62"
		4	1	15FMH1S4-T	5.00"	9.69"	18.92"
		5	1-1/2	15FMH1S5S-T	5.94"	10.64"	20.78"
		6	2	15FMH2S6-T	6.89"	11.58"	22.56"
		2	3/4	30FMH07S2-T	4.06"	8.75"	17.62"
	30	3	1	30FMH1S3-T	4.06"	8.75"	18.85"
		4	1-1/2	30FMH1S4-T	5.00"	9.69"	20.67"
		5	2	30FMH2S5-T	5.94"	10.64"	21.61"
	45	2	1-1/2	45FMH1S2S-T	4.65"	9.34"	19.64"
		3	2	45FMH2S3-T	4.65"	9.34"	20.47"



"You can't let praise or criticism get to you. It's a weakness to get caught up in either one."

—John Wooden



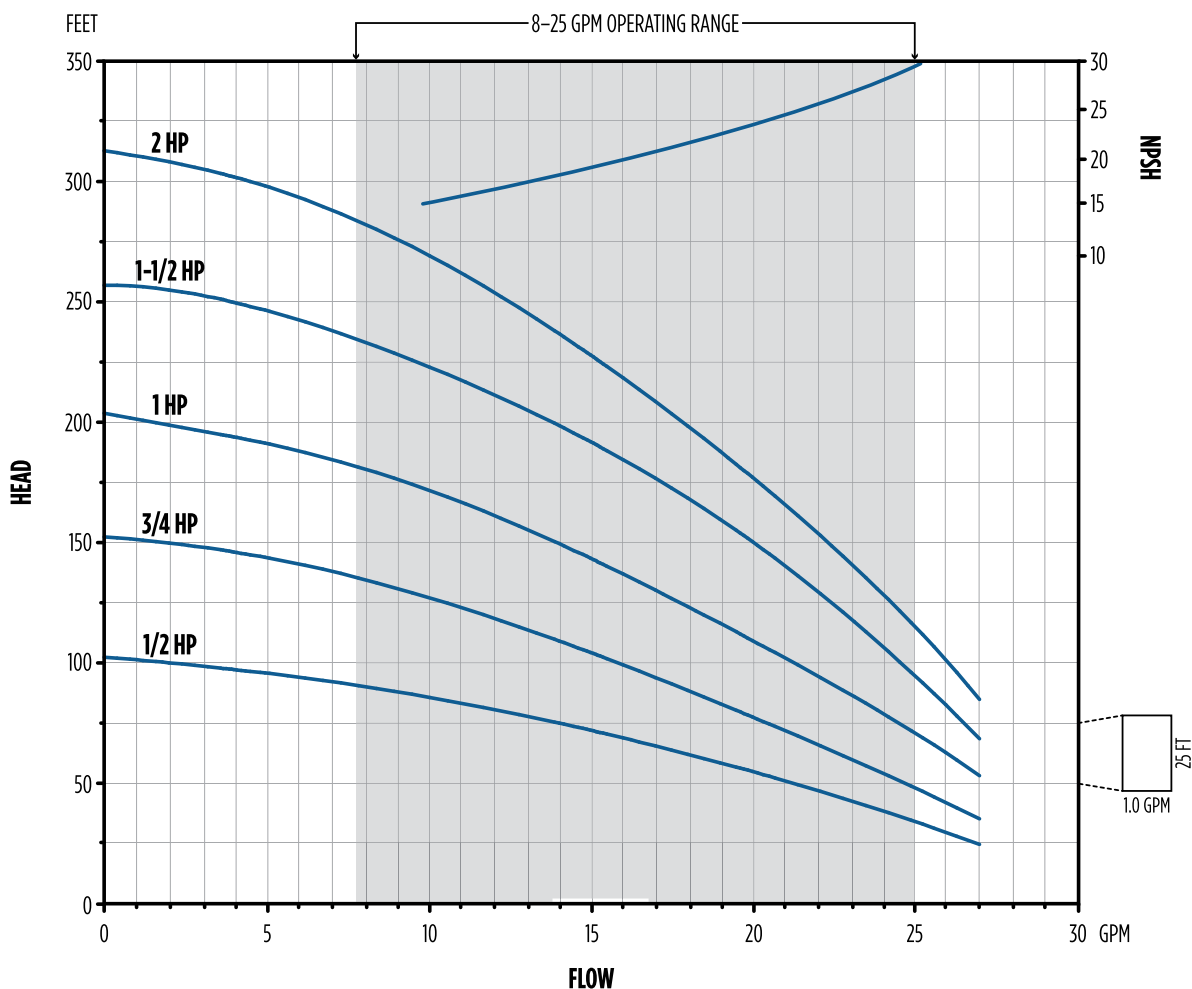
brtmarine.com 800-725-3787



PROUD DISTRIBUTOR OF  
**Franklin Electric**

# MULTI-STAGE BOOSTER PUMPS — MH SERIES

## PERFORMANCE - 15 GPM



Model	HP	Total Head (ft)																							Shut-of Head (PSI)
		50	60	70	80	90	100	110	120	130	140	150	160	170	180	190	200	210	220	230	240	250	260	270	
		Capacities (GPM)																							
15FMH05S2	1/2	21.0	18.0	15.0	12.0	8.0	1.0	-	-	-	-	-	-	-	-	-	-	-	-	-	-	-	-	-	44
15FMH05S2-T		-	-	-	-	-	-	-	-	-	-	-	-	-	-	-	-	-	-	-	-	-	-	-	-
15FMH07S3	3/4	25.0	23.0	21.0	19.0	18.0	16.0	14.0	12.0	9.0	6.0	1.0	-	-	-	-	-	-	-	-	-	-	-	-	66
15FMH07S3-T		-	-	-	-	-	-	-	-	-	-	-	-	-	-	-	-	-	-	-	-	-	-	-	-
15FMH1S4	1	-	26.0	25.0	24.0	23.0	21.0	20.0	18.0	17.0	15.0	14.0	12.0	10.0	8.0	5.0	1.0	-	-	-	-	-	-	-	88
15FMH1S4-T		-	-	-	-	-	-	-	-	-	-	-	-	-	-	-	-	-	-	-	-	-	-	-	-
15FMH1S5	1-1/2	-	-	27.0	26.0	25.0	25.0	24.0	23.0	22.0	21.0	20.0	19.0	18.0	16.0	15.0	14.0	12.0	10.0	9.0	6.0	4.0	-	-	111
15FMH1S5-T		-	-	-	-	-	-	-	-	-	-	-	-	-	-	-	-	-	-	-	-	-	-	-	-
15FMH2S6	2	-	-	-	-	27.0	26.0	25.0	25.0	24.0	23.0	22.0	21.0	21.0	20.0	19.0	18.0	17.0	16.0	15.0	14.0	12.0	11.0	10.0	135
15FMH2S6-T		-	-	-	-	-	-	-	-	-	-	-	-	-	-	-	-	-	-	-	-	-	-	-	-

“Success is never final, failure is never fatal. It’s courage that counts.”

—John Wooden

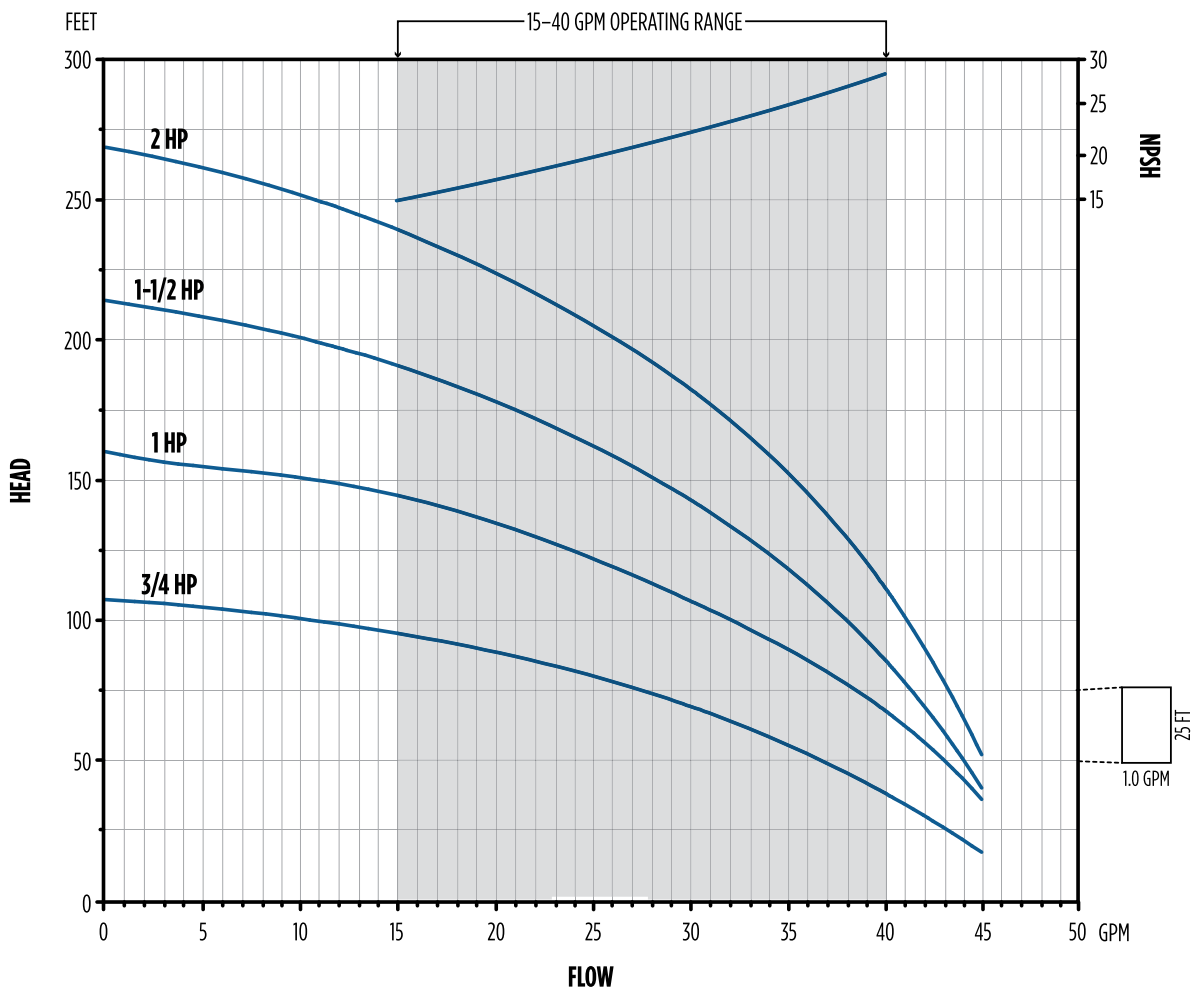


PROUD DISTRIBUTOR OF  
**Franklin Electric**

brtmarine.com 800-725-3787

# MULTI-STAGE BOOSTER PUMPS — MH SERIES

## PERFORMANCE - 30 GPM



Model	HP	Total Head (ft)																			Shut-off Head (PSI)	
		50	60	70	80	90	100	110	120	130	140	150	160	170	180	190	200	210	220	230		240
		Capacities (GPM)																				
30FMH07S2	3/4	37.0	33.0	30.0	25.0	19.0	10.0	-	-	-	-	-	-	-	-	-	-	-	-	-	47	
30FMH07S2-T																						
30FMH1S3	1	43.0	41.0	40.0	37.0	35.0	32.0	29.0	26.0	22.0	17.0	11.0	-	-	-	-	-	-	-	-	69	
30FMH1S3-T																						
30FMH1S4	1-1/2	44.0	43.0	42.0	41.0	39.0	38.0	36.0	35.0	33.0	31.0	28.0	26.0	23.0	19.0	15.0	10.0	3.0	-	-	-	93
30FMH1S4-T																						
30FMH2S5	2	-	44.0	44.0	43.0	42.0	41.0	40.0	39.0	38.0	37.0	35.0	34.0	32.0	30.0	28.0	26.0	24.0	21.0	18.0	15.0	116
30FMH2S5-T																						

“If you put the federal government in charge of the Sahara Desert, in 5 years there’d be a shortage of sand.”

—Milton Friedman



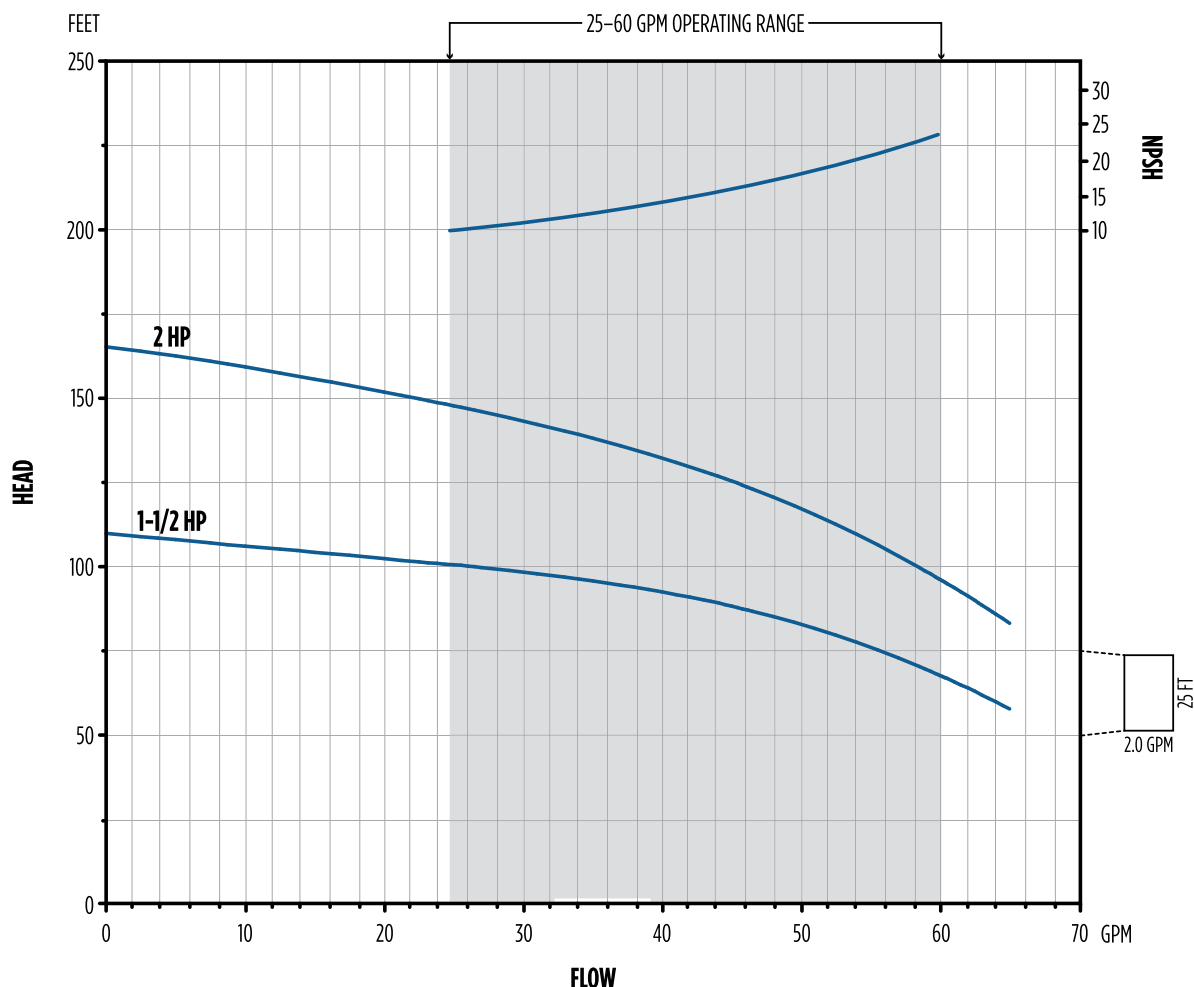
brtmarine.com 800-725-3787



PROUD DISTRIBUTOR OF  
**Franklin Electric**

# MULTI-STAGE BOOSTER PUMPS — MH SERIES

## PERFORMANCE - 45 GPM



Model	HP	Total Head (ft)											Shut-off Head (PSI)
		60	70	80	90	100	110	120	130	140	150	160	
45FMH15S2	1-1/2	64.0	59.0	52.0	43.0	26.0	-	-	-	-	-	-	47
45FMH15S2-T		-	-	-	-	-	-	-	-	-	-	-	
45FMH2S3	2	-	-	-	62.0	58.0	54.0	48.0	42.0	33.0	22.0	9.0	71
45FMH2S3-T		-	-	-	-	-	-	-	-	-	-	-	

“When government—in pursuit of good intentions—tries to rearrange the economy, legislate morality, or help special interests, the cost comes in inefficiency, lack of motivation, and loss of freedom.”

—Milton Friedman



PROUD DISTRIBUTOR OF  
**Franklin Electric**

brtmarine.com 800-725-3787

# SINGLE STAGE CENTRIFUGAL PUMPS

For times when transferring water is required, or providing a moderate pressure boost, Franklin offers a wide variety of pumps that accomplish most any task. Whether circulating water or other liquids, Franklin's centrifugal pumps have a range of horsepower in single- and three-phase configurations to complete the job. Throughout the selection, the centrifugal pumps and motors are available for indoor and outdoor use with UL approvals.

## PRODUCT FAMILY

- DDS Series
- FCE Series
- A Series
- S Series
- JCM Series

## APPLICATIONS

- Pressure Boosting
- Water Transfer
- General Purpose
- Water Features
- Fountains
- General Dewatering
- Aquariums (A Series, S Series, JCM Series)



FCE Series



DDS Series



S Series



JCM Series



A Series



[brtmarine.com](http://brtmarine.com) 800-725-3787



PROUD DISTRIBUTOR OF  
**Franklin Electric**

# STAINLESS STEEL CENTRIFUGAL PUMPS — DDS SERIES

## FEATURES

- 304 stainless steel volute and seal plate
- Volute can be rotated in 90 degree increments for ease of installation
- Mechanical shaft seal; FKM elastomers for added chemical resistance
- Enclosed thermoplastic impeller design for increased efficiency
- Mechanical seal with carbon/ceramic faces, FKM elastomer, and stainless steel components
- Back pull-out design; provides access to pump parts without disturbing the plumbing
- Maximum fluid temperature of 140 °F/60 °C ; maximum working pressure of 150 psi
- Powered by high quality, industry proven, UL778 approved, indoor/outdoor square-flange motors; 2-compartment design for ease of service

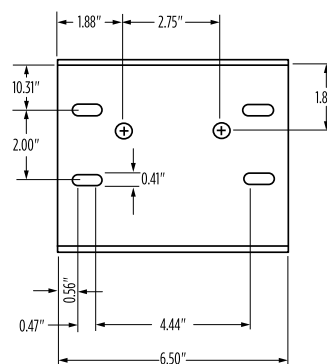
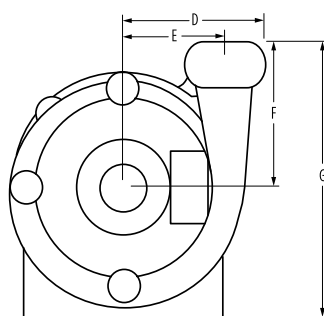
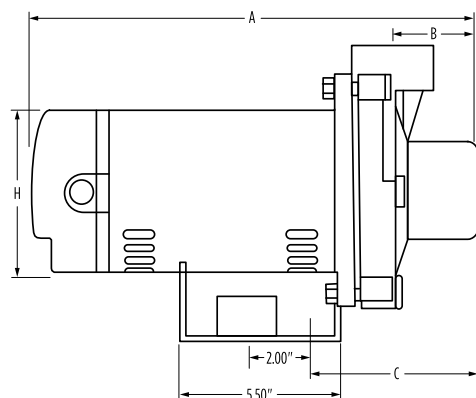


## ORDERING INFORMATION

HP	Dis. x Suc. (FNPT)	Single-Phase (115/230 V)				Three-Phase (208-230/460 V)			
		Model	Order No.	S.F.A.	Wt. (lbs)	Model	Order No.	S.F.A.	Wt. (lbs)
1/2	1" x 1-1/4"	5FPDDSI-S	93178056	12/6	25	5FPDDSI-T	93178098	2.9-2.6/1.3	25
3/4		7FPDDSI-S	93178064	14.2/71	29	7FPDDSI-T	93178106	4.1-3.8/1.9	29
1		1FPDDSI-S	93178072	14.8/7.4	31	1FPDDSI-T	93178114	4.8-4.6/2.3	31
1-1/2		15FPDDSI-S	93178080	16.4/8.2	36	15FPDDSI-T	93178122	6.4-6.2/3.1	36

## DIMENSIONS

Model	HP	A	B	C	D	E	F	G	H
5FPDDSI-S	1/2	14.69"	2.38"	5.31"	4.44"	3.50"	4.63"	8.75"	5.50"
5FPDDSI-T		14.69"							
7FPDDSI-S	3/4	14.69"							
7FPDDSI-T		14.69"							
1FPDDSI-S	1	14.69"							
1FPDDSI-T		14.69"							
15FPDDSI-S	1-1/2	15.19"							
15FPDDSI-T		15.19"							



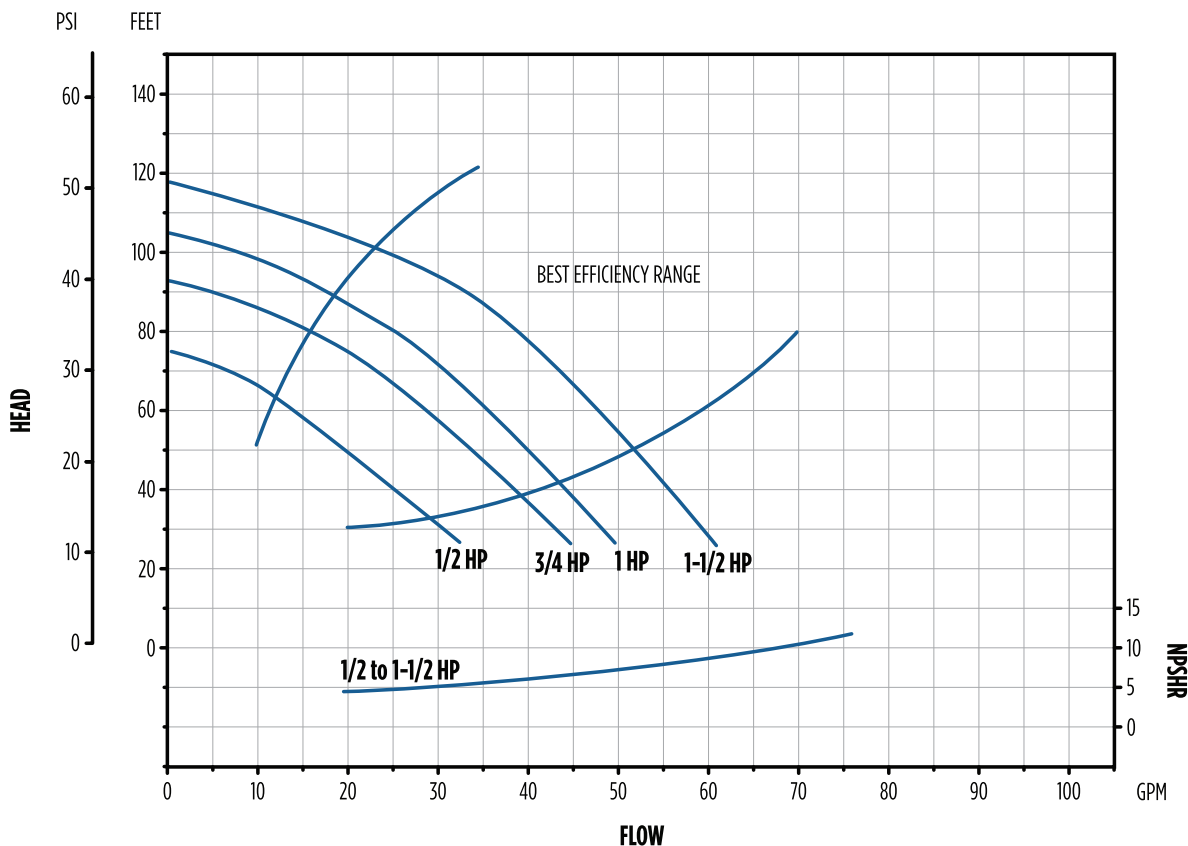
"Most economic fallacies derive from the tendency to assume that there is a fixed pie, that one party can gain only at the expense of another."

—Milton Friedman



# STAINLESS STEEL CENTRIFUGAL PUMPS — DDS SERIES

## PERFORMANCE



Model	HP	Total Head (ft)											Shut-off Head (ft)
		30	35	40	45	50	60	70	80	90	100	110	
5FPDDSI-S	1/2	30.0	27.0	25.0	22.0	19.0	14.0	-	-	-	-	-	74
5FPDDSI-T		-	-	-	-	-	-	-	-	-	-	-	
7FPDDSI-S	3/4	-	41.0	38.0	36.0	34.0	29.0	23.0	16.0	-	-	-	93
7FPDDSI-T		-	-	-	-	-	-	-	-	-	-	-	
1FPDDSI-S	1	-	-	-	42.0	40.0	36.0	31.0	25.0	18.0	-	-	105
1FPDDSI-T		-	-	-	-	-	-	-	-	-	-	-	
15FPDDSI-S	1-1/2	-	-	-	-	52.0	47.0	44.0	39.0	34.0	25.0	-	118
15FPDDSI-T		-	-	-	-	-	-	-	-	-	-	-	

“Concentrated power is not rendered harmless by the good intentions of those who create it.”

—Milton Friedman



brtmarine.com 800-725-3787



PROUD DISTRIBUTOR OF  
**Franklin Electric**



# CAST IRON CENTRIFUGAL PUMPS — FCE SERIES

## FEATURES

- Cast iron volute and seal plate
- Volute can be rotated in 90degree increments for ease of installation
- Modified PPO impeller with stainless steel hub for optimum efficiency and performance
- Phenolic/Ceramic mechanical shaft seal with nitrile elastomers and 18-8SS components
- Powered by high quality, industry proven, UL778 approved, indoor/outdoor square-flange motors; 2-compartment design for ease of service
- Back pull-out design; access to pump parts without disturbing the plumbing
- Phenolic/Ceramic mechanical shaft seal with nitrile elastomers and 18-8SS components
- Can be mounted in a vertical or horizontal position.
- Maximum fluid temperature of 160 °F/71 °C; maximum working pressure 75 psi



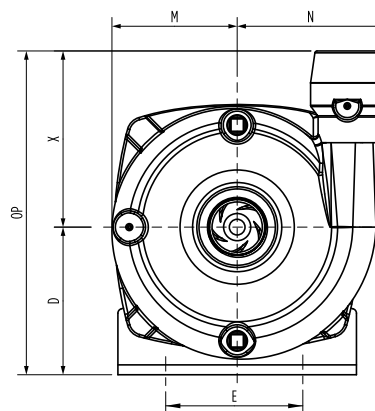
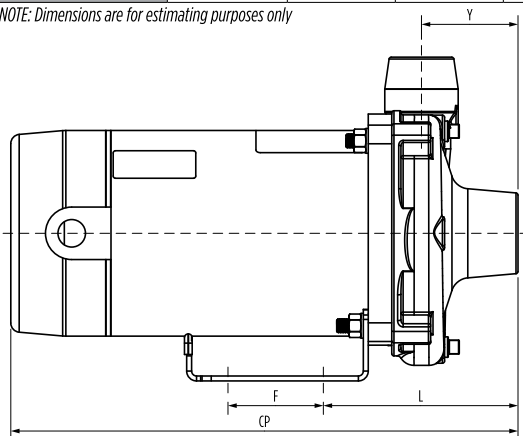
## ORDERING INFORMATION

HP	Dis. x Suc. (FNPT)	Single-Phase					Three-Phase				
		Model	Voltage	S.F.A.	Order No.	Wt. (lbs)	Model No.	Voltage	S.F.A.	Order No.	Wt. (lbs)
1/2	1" x 1-1/4"	FCE05CI	115/230	12.4/6.2	90200005	31	FCE05CI-T	208- 230/460	3/1.5	90203005	29
3/4	1" x 1-1/4"	FCE07CI	115/230	14.8/7.4	90200007	32	FCE07CI-T		3.6/1.8	90203007	31
1	1" x 1-1/4"	FCE1CI	115/230	19.2/9.6	90200010	37	FCE1CI-T		4.7/2.35	90203010	34
1-1/2	1" x 1-1/4"	FCE15CI	115/230	24.0/12.0	90200015	42	FCE15CI-T		6.8/3.4	90203015	39
2	1-1/2" x 1-1/4"	FCE2CI	230	11.2	90200020	46	FCE2CI-T		8.5/4.25	90203020	42

## DIMENSIONS

Model	HP	CP	D	E	F	L	M	N	OP	X	Y
FCE05CI	1/2	13.75	4.00	4.88	3.00	5.53	3.69	4.00	8.90	4.90	2.63
FCE05CI-T											
FCE07CI	3/4	14.07	4.00	4.88	3.00	5.53	3.69	4.00	8.90	4.90	2.63
FCE07CI-T											
FCE1CI	1	15.57	4.00	4.88	3.00	5.53	3.69	4.00	8.90	4.90	2.63
FCE1CI-T											
FCE15CI	1-1/2	15.90	4.00	4.88	3.00	5.53	3.69	4.00	8.90	4.90	2.63
FCE15CI-T											
FCE2CI	2	15.82	4.46	4.88	3.00	5.88	4.12	4.72	10.78	6.31	2.88
FCE2CI-T											

NOTE: Dimensions are for estimating purposes only



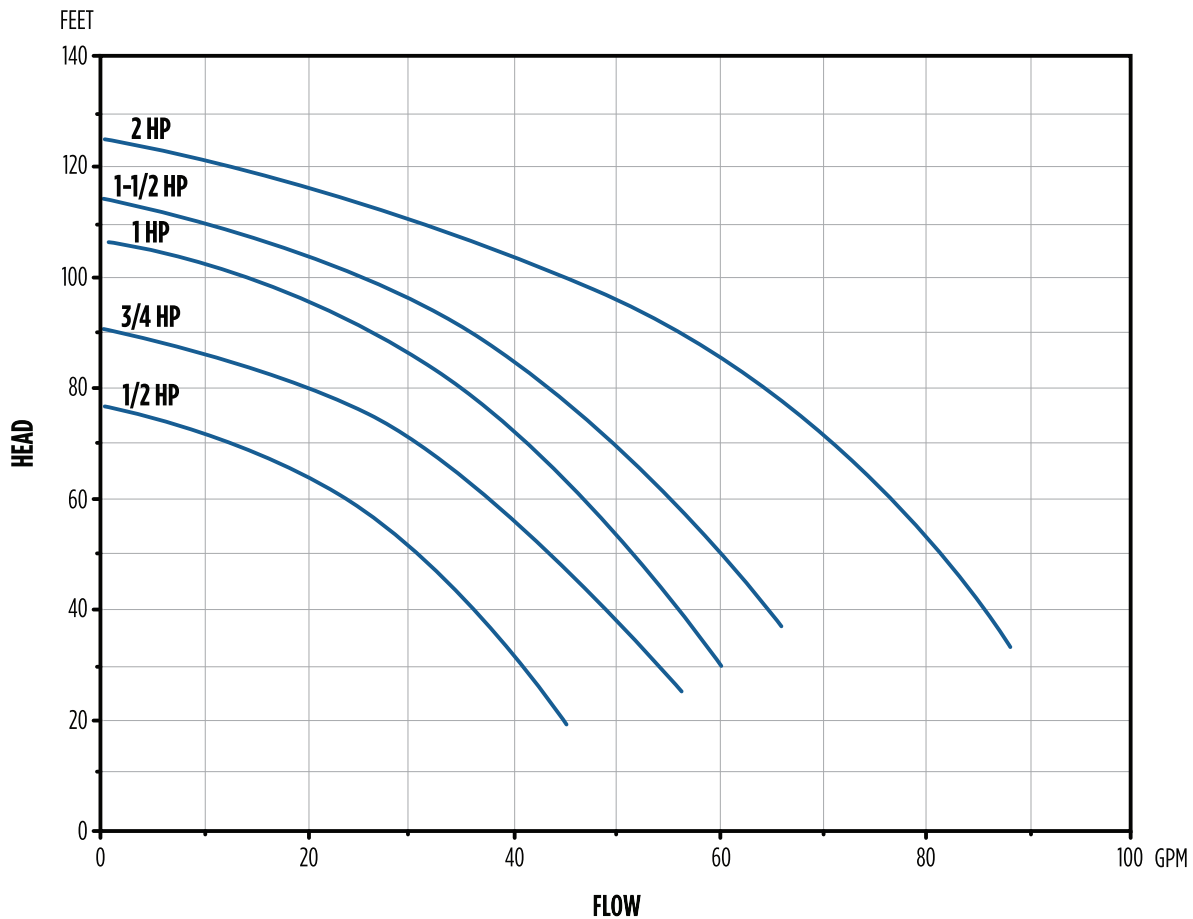
PROUD DISTRIBUTOR OF  
**Franklin Electric**

[brtmarine.com](http://brtmarine.com) 800-725-3787



# CAST IRON CENTRIFUGAL PUMPS — FCE SERIES

## PERFORMANCE



Model	HP	Total Head (ft)						Shut-off Head (ft)
		30	40	50	70	90	110	
		Capacities (GPM)						
FCE05CI / FCE05CI-T	1/2	42	35	31	12	-	-	76
FCE07CI / FCE07CI-T	3/4	54	48	43	31	2	-	90
FCE1CI / FCE1CI-T	1	60	56	52	42	26	-	106
FCE15CI / FCE15CI-T	1-1/2	-	65	60	49	35	10	113
FCE2CI / FCE2CI-T	2	-	86	82	71	56	31	124

“The only relevant test of the validity of a hypothesis is comparison of prediction with experience.”

—Milton Friedman



brtmarine.com 800-725-3787



PROUD DISTRIBUTOR OF  
**Franklin Electric**

# NON-CORROSIVE TRANSFER PUMPS — A SERIES

## FEATURES

- High-tech, non-corrosive plastic construction and stainless steel for components in contact with liquid
- Motor shaft is completely insulated from any contact with pumping liquid
- Phenolic/Ceramic mechanical shaft seal with nitrile elastomers and 18-8SS components
- Standard 2" union connections (ordered separately) ensure easy service and optimum water flow
- Three-way volute discharge port rotates at 90° increments without removing motor
- Lightweight design



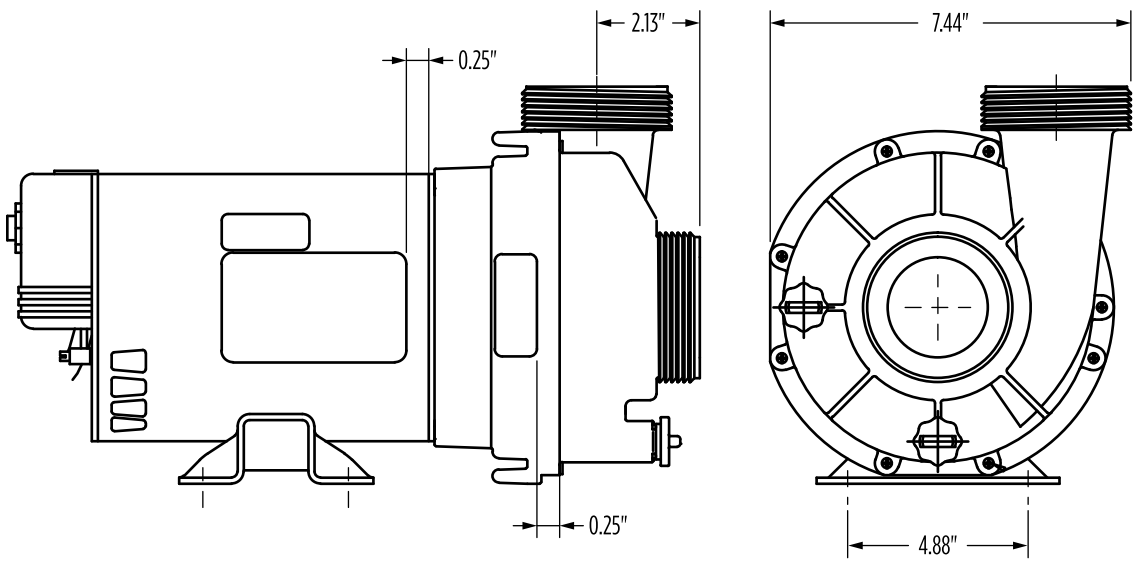
## ORDERING INFORMATION

Model	HP	Dis. x Suc. (MBPT)	Voltage	S.F.A.	Order No.	Wt. (lbs)
S2A	2	2" x 2"	115/230	16/8	94216151	27
S3A	3		230	10	94216191	29
S35A	3-1/2		230	8.5	94216201	31
S4A	4		230	10	94216301	35
S45A	4-1/2		230	12	94216401	39
Fittings kit contains (2) 2" slip x threaded connection union halves					31150109	2

NOTE: Set of union halves must be purchased separately.

## DIMENSIONS

Model	HP	A	D	E
S2A	2	15.19"	3.38"	7.94"
S3A	3	16.44"	3.38"	8.06"
S35A	3-1/2	16.31"	3.50"	8.06"
S4A	4	16.81"	3.50"	8.06"
S45A	4-1/2	17.50"	3.50"	8.06"



“The fear of the Lord *is* the beginning of wisdom, and the knowledge of the Holy One *is* understanding.”

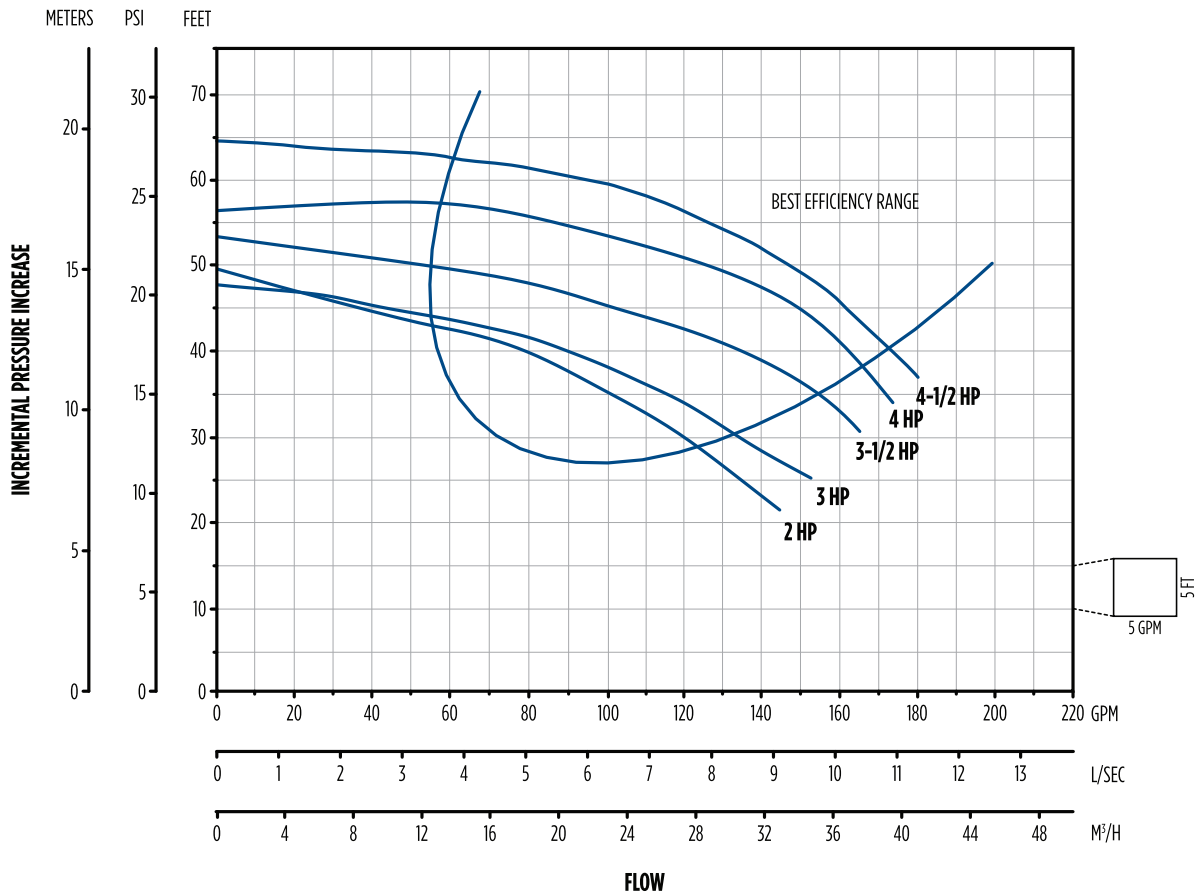
—Proverbs 9:10



BR

# NON-CORROSIVE TRANSFER PUMPS — A SERIES

## PERFORMANCE



Model	HP	Total Head (ft)					Shut-off Head (ft)
		20	30	40	50	60	
		Capacities (GPM)					
S2A	2	148.0	119.0	78.0	-	-	49
S3A	3	172.0	132.0	89.0	-	-	47
S35A	3-1/2	-	166.0	123.0	48.0	-	53
S4A	4	-	180.0	162.0	120.0	-	56
S45A	4-1/2	-	-	172.0	143.0	98.0	64

“Universities exist to transmit knowledge and understanding of ideas and values to students, not to provide entertainment for spectators or employment for athletes.”

—Milton Friedman



brtmarine.com 800-725-3787



PROUD DISTRIBUTOR OF  
**Franklin Electric**

# NON-CORROSIVE TRANSFER PUMPS — JCM SERIES

## FEATURES

- High-tech, non-corrosive plastic construction and stainless steel for components in contact with liquid
- Patented, air-cooled heat sink allows pump to run dry or in loss-of-prime conditions without damage to the shaft seal
- Floating eye seal between the closed impeller and the pump case maximizes pump efficiency for best flow and pressure
- Phenolic/Ceramic mechanical shaft seal with nitrile elastomers and 18-8SS components
- Accepts a standard 1-1/2" union (ordered separately)
- UL and CSA agency listings apply to clean water applications only



## ORDERING INFORMATION

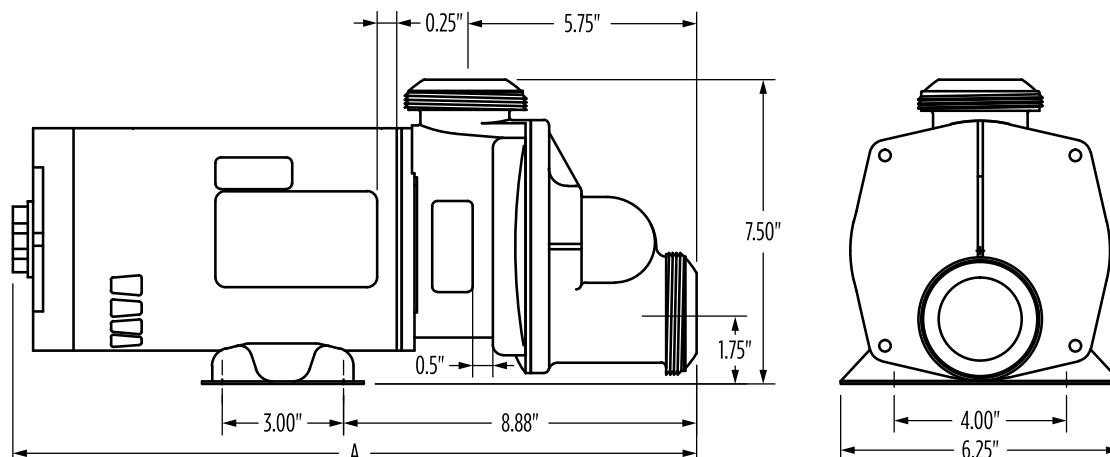
Model	HP	Dis. x Suc. (MNPT)	Voltage	S.F.A.	Order No.	Wt. (lbs)
S7JCM	3/4	1-1/2" x 1-1/2"	115	9.8	94215696	22
S1JCM	1		115	9.8	94215704	24
S15JCM	1-1/2		115	12.4	94216587	26
S2JCM	2		115/230	16.8/8.4	94215522	35
S7JCM-A3*	3/4		115	10.5	94216405	22
S1JCM-A3*	1		115	10.5	94216421	24
S15JCM-A3*	1-1/2		115	12.4	94216603	26
S2JCM-A3*	2		115	16.0	94216447	35
Set of (2) S15UNS Straight Union					31175608	1

\* Built-in air switch and 3' cord with standard three-prong plug

## DIMENSIONS

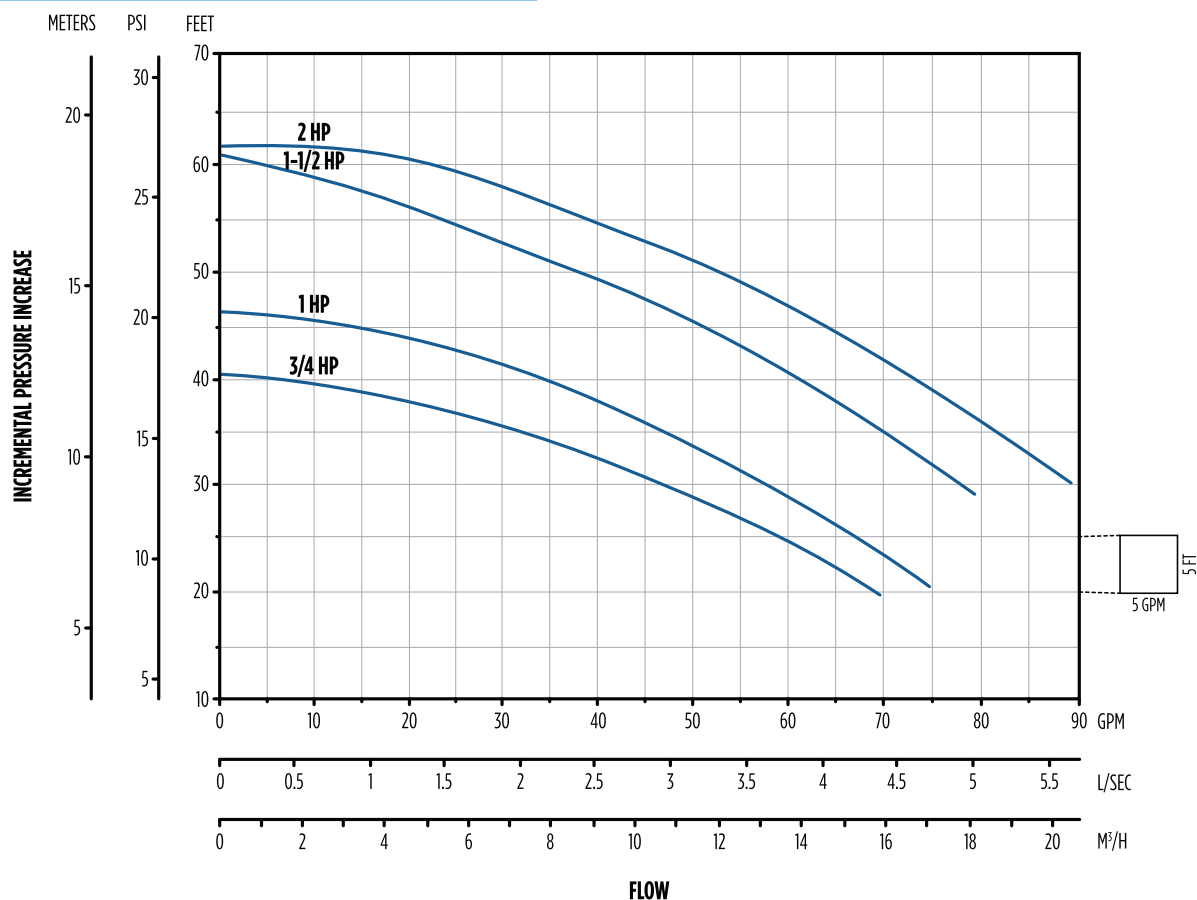
Model	HP	A
S7JCM / S7JCM-A3*	3/4	16.63"
S1JCM / S1JCM-A3*	1	16.63"
S15JCM / S15JCM-A3*	1-1/2	17.06"
S2JCM / S2JCM-A3*	2	17.06"

NOTE: Dimensions will vary according to motor manufacturer



# NON-CORROSIVE TRANSFER PUMPS — JCM SERIES

## PERFORMANCE



Model	HP	Total Head (ft)					Shut-off Head (ft)
		20	30	40	50	60	
		Capacities (GPM)					
S7JCM / S7JCM-A3*	3/4	70.0	47.0	6.0	-	-	40
S1JCM / S1JCM-A3*	1	-	57.0	34.0	-	-	46
S15JCM / S15JCM-A3*	1-1/2	-	78.0	61.0	38.0	4.0	61
S2JCM / S2JCM-A3*	2	-	89.0	73.0	53.0	22.0	62

“The way you solve things is by making it politically profitable for the wrong people to do the right thing.”

—Milton Friedman



brtmarine.com 800-725-3787



PROUD DISTRIBUTOR OF  
**Franklin Electric**

# INLINE CONTROLS

Franklin Electric's Inline Controls include five pump starting and control devices that pair with a variety of submersible or surface pump up to 20 amps (or approximately 3 hp) to provide or boost the system's overall water pressure – and in many cases, without the need of an additional bladder tank. Depending on application requirements and selected model, the product family offers various forms of system protection, including dry run, dead head pumping, over amperage, locked system, and over pressurization. They also offer two unique features that ensure the system remains functional and hassle free, including: a daily motor rotation start designed to energize the motor at least once every 24 hours to prevent system locking, and a unique automatic restart feature eliminating the need to manually restart the pump in the case of an unexpected trip or fault.

## FEATURES BY MODEL



FLW



SWC



SWP



ADJ



CTL



Model Description	Flow Based Pump Activation	Run Dry Protection	Low-Pressure Backup Activation	Replaces Pressure Switch and Tank	Suction Lift	Includes Pressure Gauge	Adjustable Low-Pressure Backup Activation	Max. Pressure Regulation
Inline FLW	✓	✓		✓				
InlineSWC	✓	✓	✓	✓	✓			
InlineSWP	✓	✓	✓	✓	✓			
InlineADJ 115 V	✓	✓	✓	✓	✓	✓	✓	
InlineADJ 230 V	✓	✓	✓	✓	✓	✓	✓	
InlineCTL	✓	✓	✓	✓	✓	✓		✓

*NOTE: Proper pump selection is essential for use with the Inline FLW, SWC, SWP, and ADJ as pump shut-off pressure will be realized within the system prior to shut down. If the pump size can not be reduced, select the Inline CTL with built-in pressure reducing valve.*

## TECHNICAL SPECIFICATIONS

Model Description	Motor Size		Voltage	Max. Current	Max. Temp.	Min. Flow (GPM)	Thread Size
InlineFLW	up to 1.5 hp	up to 1.1 kW	115/230	15 A	150 °F	0.15	1" MNPT
InlineSWC	up to 2 hp	up to 1.5 kW	115/230	16 A	150 °F	0.25	1" MNPT
InlineSWP	up to 3 hp	up to 2.2 kW	115/230	20 A	150 °F	0.25	1 ¼" MNPT
InlineADJ 115 V	up to 0.75 hp	up to 0.55 kW	115	16 A	150 °F	0.25	1" MNPT
InlineADJ 230 V	up to 2 hp	up to 1.5 kW	230	16 A	150 °F	0.25	1" MNPT
InlineCTL	up to 3 hp	up to 2.2 kW	115/230	20 A	150 °F	0.25	1 ¼" MNPT

“Many highly schooled people are uneducated, and many highly ‘educated’ people are unschooled.”

—Milton Friedman



PROUD DISTRIBUTOR OF  
**Franklin Electric**

[brtmarine.com](http://brtmarine.com) 800-725-3787



# INLINE CONTROLS — FLW

Use with a pressurized water supply such as an elevated tank or a municipal/utility source. The Inline Control FLW is a smart flow activated pump start control, designed for use in conjunction with a pump where starting and stopping the system based on water usage is desired.

## FEATURES

- With flow of 0.15 gpm or greater the pump is activated to ensure continuous operation during water demand cycles
- Can be wired for 115V or 230V with no internal settings or wiring changes required
- Protects pump from conditions of dry run and pumping against a closed discharge (dead-head) by powering off the system when water flow stops
- If the pump remains idle for 24 consecutive hours, the device will carry out an autorun feature to keep the system free of debris and clogs
- Replaces the need for an external pressure tank and differential pressure switch

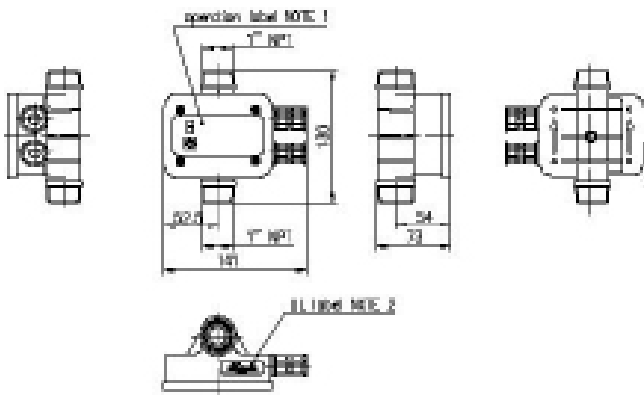


Model Description	Flow Based Pump Activation	Run Dry Protection	Low-Pressure Backup Activation	Replaces Pressure Switch and Tank	Suction Lift	Includes Pressure Gauge	Adjustable Low-Pressure Backup Activation	Max. Pressure Regulation
Inline FLW	✓	✓		✓				

*NOTE: Proper pump selection is essential for use with the Inline FLW as pump shut-off pressure will be realized within the system prior to shut down. If the pump size cannot be reduced to a lower output performance within the systems pressure limits, select the Inline CTL with built-in pressure reducing valve.*

## ORDERING INFORMATION

Model Description	Order No.	Model No.	Motor Size		Voltage	Max. Current	Max. Temp.	Thread Size
InlineFLW	91987102	FIL-FLW15	0.75-1.5 hp	(0.55-1.1 kW)	115/230	15 A	150 °F	1" MNPT



“I am in favor of cutting taxes under any circumstances and for any excuse, for any reason, whenever it’s possible.”

—Milton Friedman



brtmarine.com 800-725-3787



PROUD DISTRIBUTOR OF  
**Franklin Electric**

# INLINE CONTROLS — SWC & SWP

Use with a pressurized water supply or suction lift installation for municipal and well supply sources. The Inline Control SWC and SWP are flow activated smart pump start controls, designed for use in conjunction with a pump where starting and stopping the system based on water usage is desired.

## FEATURES

- With flow of 0.25 gpm or greater the pump is activated to ensure continuous operation during water demand cycles
- When flow is less than 0.25 gpm, the pump starts at a minimum pressure of 22 psi
- If the pump starts due to low system pressure, with no additional demand, the Inline SWC and SWP will only run the system to rebuild pressure
- Can be wired for 115V or 230V with no internal settings or wiring changes required
- Includes a convenient built-in check valve
- Protects pump from conditions of dry run, overcurrent, and pumping against a closed discharge (dead-head) by powering off the system when water flow stops
- If the pump remains idle for 24 consecutive hours, the device will carry out an autorun feature to keep the system free of debris and clogs
- The system will auto-rest up to 10 times in a 24 hour period if no water is detected, to protect the pump
- Replaces the need for an external pressure tank and differential pressure switch



SWC



SWP

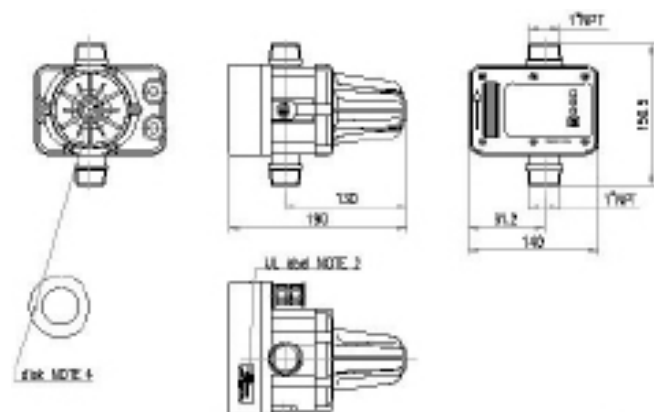
Model Description	Flow Based Pump Activation	Run Dry Protection	Low Pressure Backup Activation	Replaces Pressure Switch and Tank	Suction Lift	Includes Pressure Gauge	Adjustable Low-Pressure Backup Activation	Max. Pressure Regulation
InlineSWC	✓	✓	✓	✓	✓			
InlineSWP	✓	✓	✓	✓	✓			

*NOTE: Proper pump selection is essential for use with the Inline SWC and SWP as pump shut-off pressure will be realized within the system prior to stopping the pump. If the pump size cannot be reduced to a lower output performance within the systems pressure limits, select the Inline CTL with built-in pressure reducing valve.*

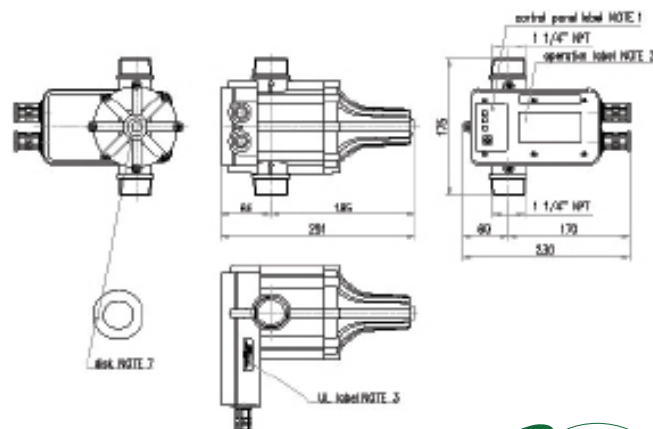
## ORDERING INFORMATION

Model Description	Order No.	Model No.	Motor Size	Voltage	Max. Current	Max. Temp.	Thread Size
InlineSWC	91987103	FIL-SWC16	0.75-2 hp (0.55-1.5 kW)	115/230	16 A	150 °F	1" MNPT
InlineSWP	91987104	FIL-SWP20	1-3 hp (0.75-2.2 kW)	115/230	20 A	150 °F	1 1/4" MNPT

FIL-SWC16



FIL-SWP20



PROUD DISTRIBUTOR OF  
**Franklin Electric**

[brtmarine.com](http://brtmarine.com) 800-725-3787



# INLINE CONTROLS — ADJ

Use with a pressurized water supply or suction lift installation for municipal and well supply sources. The Inline Control ADJ is a smart flow activated pump start control, designed for use in conjunction with a pump where starting and stopping the system based on water usage is desired. With water flow being the primary system start command, the unit provides a backup low pressure cut-in point where the pump will start to repressurize the system. The InlineADJ allows this low pressure cut to be adjusted to 22, 29, or 36 PSI to ensure the system will still reach the desired shut-off pressure.

## FEATURES

- With flow of 0.25 gpm or greater the pump is activated to ensure continuous operation during water demand cycles
- When flow is less than 0.25 gpm, the user may select between three adjustable cut-in points for a minimum system pressure of 22, 29, or 36 psi
- If the pump starts due to low system pressure, with no additional demand, the Inline ADJ will only run the system to rebuild pressure
- Separate models for 115V or 230V with no internal settings or wiring changes required
- Includes a convenient built-in check valve
- Protects pump from conditions of dry run, overcurrent, and pumping against a closed discharge (dead-head) by powering off the system when water flow stops
- If the pump remains idle for 24 consecutive hours, the device will carry out an autorun feature to keep the system free of debris and clogs.
- The system will auto-rest up to 10 times in a 24 hour period if no water is detected, to protect the pump
- Replaces the need for an external pressure tank and differential pressure switch



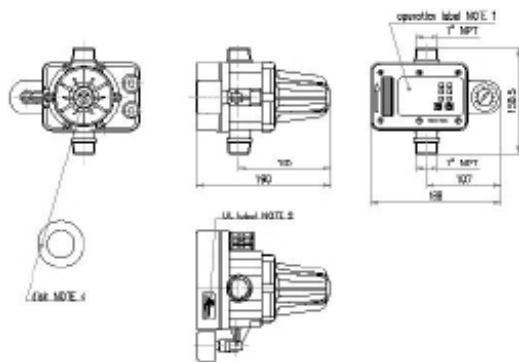
Model Description	Flow Based Pump Activation	Run Dry Protection	Low-Pressure Backup Activation	Replaces Pressure Switch and Tank	Suction Lift	Includes Pressure Gauge	Adjustable Low-Pressure Backup Activation	Max. Pressure Regulation
InlineADJ 115 V	✓	✓	✓	✓	✓	✓	✓	
InlineADJ 230 V	✓	✓	✓	✓	✓	✓	✓	

*NOTE: Proper pump selection is essential for use with the Inline ADJ as pump shut-off pressure will be realized within the system prior to shut down. If the pump size cannot be reduced to a lower output performance within the systems pressure limits, select the Inline CTL with built-in pressure reducing valve.*

## ORDERING INFORMATION

Model Description	Order No.	Model No.	Motor Size		Voltage	Max. Current	Max. Temp.	Thread Size
InlineADJ 115 V	91987105	FIL-ADJ16-1G	0.75 hp	(0.55 kW)	115	16 A	150 °F	1" MNPT
InlineADJ 230 V	91987106	FIL-ADJ16-2G	2hp	(1.5 kW)	230	16 A	150 °F	1" MNPT

FIL-ADJ16-1G and FIL-ADJ16-2G



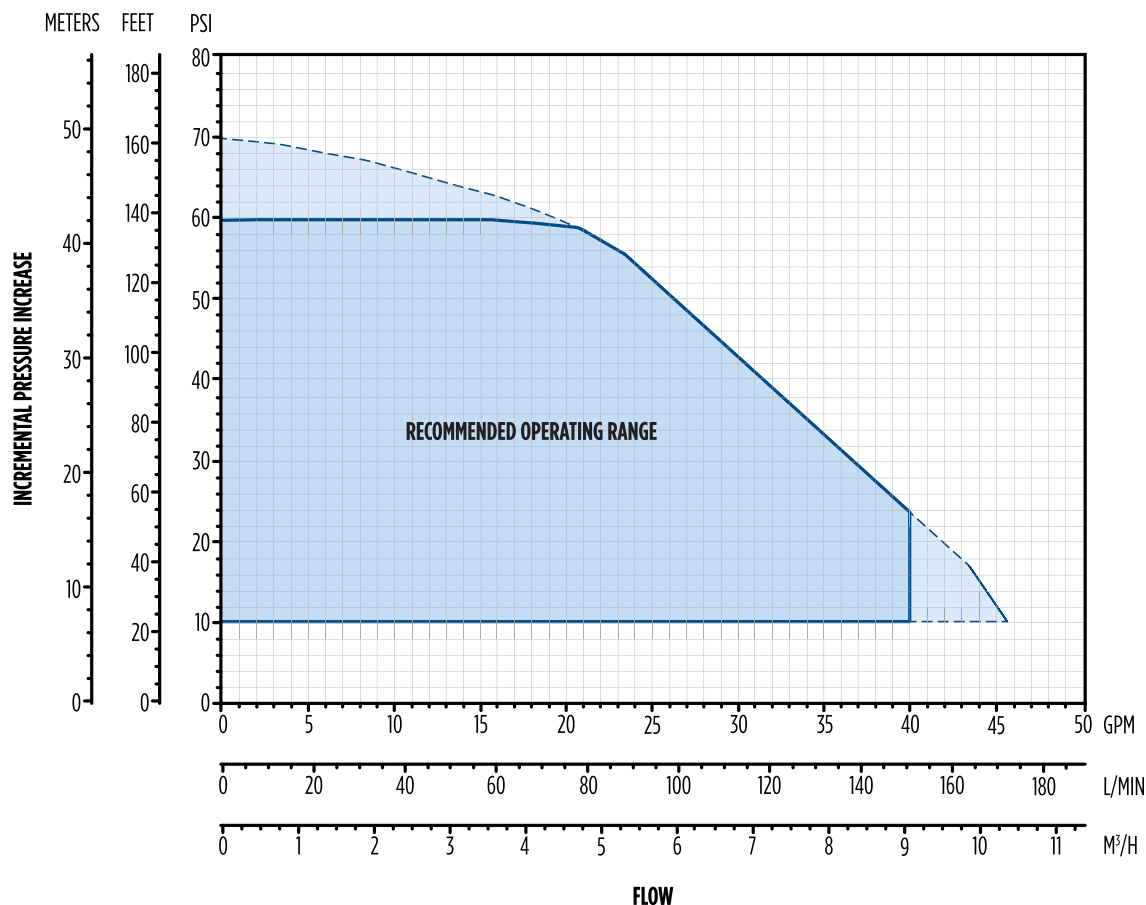
[brtmarine.com](http://brtmarine.com) 800-725-3787



PROUD DISTRIBUTOR OF  
**Franklin Electric**

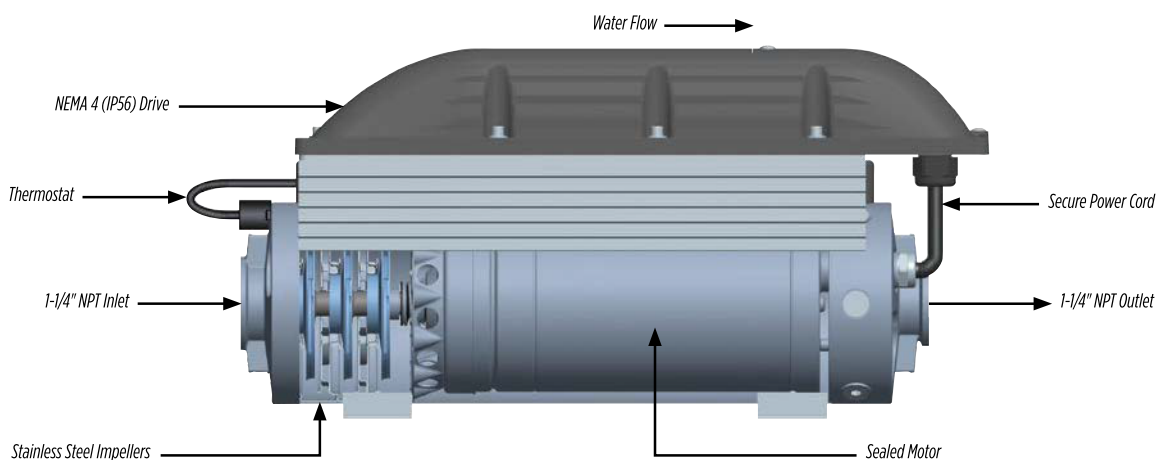
# INLINE CONSTANT PRESSURE — INLINE 1100

## PERFORMANCE



NOTE: Running outside of 'Recommended Operating Range' for short periods of time is permissible.

## SYSTEM COMPONENTS







**1172 Camp Street, New Orleans, LA 70130**  
**800-725-3787 | 504-525-7137**  
**[www.BRTMarine.com](http://www.BRTMarine.com)**