

SERVING THE MARINE INDUSTRY SINCE 1947



PRODUCT LINE

QUICK-PICK SELECTION CHARTS

BR

# SELF PRIMING PUMPS MATERIALS OF CONSTRUCTION / OPTIONS

**FLOMAX<sup>®</sup>**

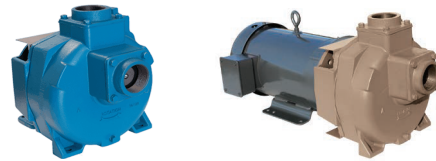
**FMX<sup>®</sup>**



Model	Size	Max GPM	Max Head-ft.	Cast Iron	316 SST	Bronze	Alum	Ductile Iron	Double Seal	5 Blade Impeller	w/ Engine	w/ Hyd Mtr.
FM5	1.5"	145	100	✓		✓	✓		✓	✓	✓	✓
FM8	2"	150	100	✓	✓	✓	✓	✓	✓	✓	✓	✓
FM10	2"	225	145	✓		✓		✓	✓	✓	✓	✓
FM15	3"	320	145	✓	✓	✓		✓	✓	✓	✓	✓
FM30	3"	500	190	✓	✓				✓		✓	✓
FM35	4" x 3"	500	180	✓	✓							
FM40	4"	750	225	✓		✓					*✓	
FMX75	3/4"	21	23		✓							✓
FMX100	1"	55	60		✓						✓	✓
FMX150	1.5"	97	105		✓							

\*✓- Eng Adpt. Only

**HHLF<sup>®</sup>**



Model	Size	Max GPM	Max Head-ft.	Cast Iron/Bronze	Bronze	w/Engine	w/Hyd Mtr.	w/12V	w/24V
HHLF	1.5"	140	190	✓	✓	*✓	✓	✓	✓
HHLF	2"	160	190	✓	✓	*✓	✓	✓	✓
HHLF	2"-HO	150	250	✓	✓	*✓			

\*✓- Eng Adpt. Only

**2CT<sup>®</sup>**



Model	Size	Max GPM	Max Head-ft.	Cast Iron	3 Blade Impeller	1.5" Solids Size	1.25" Solids Size	w/Hyd Mtr.
2CT	2"	225	125	✓		✓		
2CT-2	2"	225	125	✓		✓		
2CT-2HS	2"	255	125	✓	✓		✓	
2CT-3	3"	360	125	✓		✓		✓
2CT-3HS	3"	400	125	✓	✓		✓	

YOUR SOURCE FOR



brtmarine.com

800-725-3787



# END SUCTION CENTRIFUGAL PUMPS

## MATERIALS OF CONSTRUCTION / OPTIONS

### CHEMFLO® CFX®



Model	Size	Max GPM	Max Head-ft.	316 SST	Poly	X-P Motor	IEC Motor	w/Hyd Mtr.	w/Engine
CF1	1.5" x 1"	100	140	✓		✓	✓	✓	
CF2	1.5" x 1"	100	108	✓		✓	✓	✓	
CF3	2" x 1.5"	125	125	✓			✓	✓	
CF4	2" x 1.5"	180	80	✓			✓	✓	
CF5	2" x 1.5"	300	157	✓		✓	✓		✓
CF6	3" x 2"	450	157	✓		✓	✓	✓	✓
CF7	2" x 1"	200	280	✓		✓	✓	✓	
CF8	3" x 1.5"	350	290	✓				✓	
CF9	2" x 1"	270	460	✓					

Model	Size	Max GPM	Max Head-ft.	316 SST	Poly	X-P Motor	IEC Motor	w/12V	w/24V
CFX50	1/2" x 1/2"	15	16	✓				✓	✓
CFX75	3/4" x 3/4"	28	32	✓	✓	✓	✓	✓	✓
CFX100	1" x 1"	40	54	✓		✓	✓	✓	✓
CFX125	1" x 1.25"	80	87	✓				✓	

### SERIES®



Model	Size	Max GPM	Max Head-ft.	Cast Iron	Bronze	Ductile Iron	X-P Motor	Double Seal	w/Hyd Mtr.	w/Engine
S30	1" x 3/4"	45	40	✓	✓		✓	✓	✓	✓
S60	1.25" x 1"	65	112	✓		✓	✓	✓	✓	✓
S80	1.50" x 1.25"	80	139	✓	✓		✓	✓	✓	✓
S110	1.50" x 1.25"	130	60	✓	✓		✓	✓		✓
S120	2" x 1.5"	200	135	✓		✓				
S130	2" x 1.5"	160	60	✓	✓		✓	✓	✓	
S200	2.5" x 2"	300	115	✓	✓			✓	✓	
S300	3" x 2.5"	520	190	✓				✓	✓	
S700	4" x 3"	900	170			✓		✓		

"Marriage is an adventure, like going to war."

—Gilbert K. Chesterton



brtmarine.com

800-725-3787

YOUR SOURCE FOR



BR

# END SUCTION CENTRIFUGAL PUMPS MATERIALS OF CONSTRUCTION / OPTIONS

## TEMPUFLO®



### HIGH TEMPERATURE OIL (HTO)

Model	Size	Max GPM	Max Head-ft.	Ductile Iron	Max. Temp	X-P Motor	TEFC Motor	w/Hyd Mtr.	Pumpak
HTO 80	1.5" x 1.25"	85	130	✓	650° F	✓	✓	✓	✓
HTO 120	2" x 1.5"	195	135	✓	650° F	✓	✓	✓	✓
HTO 180	3" x 1.5"	320	160	✓	650° F	✓	✓		✓
HTO 300	3" x 2.5"	500	190	✓	650° F	✓	✓		✓

### HIGH TEMPERATURE WATER (HTW)

Model	Size	Max GPM	Max Head-ft.	Ductile Iron	Max. Temp	X-P Motor	TEFC Motor	w/Hyd Mtr.	Pumpak
HTW 80	1.5" x 1.25"	80	127	✓	400° F		✓		
HTW 120	2" x 1.5"	200	135	✓	400° F		✓		
HTW 180	3" x 1.5"	320	162	✓	400° F		✓		
HTW 300	3" x 2.5"	500	190	✓	400° F		✓		

## TRANSPORTATIONCIRCULATORS®



Pump Type	Style	Max Flow	Max Head-ft.	Mag. Drive	12V	24V	Alum. Hsg.	Nickel Steel Impeller	Composite Impeller	Port Size Option					Flanged w/1" NPT Female Adpt.
										1/2" NPT	3/4" NPT	1" Hose	5/8" Hose	1-1/8" Hose	
ILX	Inline	12	17		✓	✓	✓	✓		✓		✓	✓		
SBX	School Bus	18	15		✓	✓	✓	✓			✓	✓		✓	
MDX	Mag. Drive	25	20	✓	✓	✓	✓		✓						✓

“Of all tyrannies a tyranny sincerely exercised for the good of its victims may be the most oppressive.”

—C. S. Lewis

YOUR SOURCE FOR



brtmarine.com

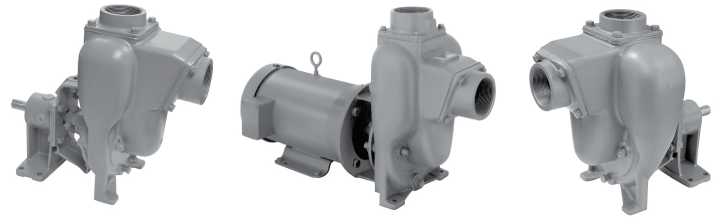
800-725-3787



# SELF PRIMING PUMPS

## MATERIALS OF CONSTRUCTION / OPTIONS

# PETROLMAXX®



### SELF PRIMING PUMPS - P SERIES

Model	Size	Max GPM	Max Head-ft.	Gasoline, AVGas, Kerosene, Jet A/8	Ductile Iron Volute	Aluminum Impeller	Aluminum Wear Plate	Shaft Clamp Lead Free Brass	X-P Electric Motor - CI I., Gr. D	Pumpak	Pedestal	w/Hyd. Motor
PG8	2"	150	100	✓	✓	✓	✓	✓	✓	✓	✓	✓
PG10	2"	225	145	✓	✓	✓	✓	✓	✓	✓	✓	✓
PG15	3"	320	145	✓	✓	✓	✓	✓	✓	✓	✓	✓
PG30	3"	500	190	✓	✓	✓	✓	✓	✓	✓	✓	
PG40	4"	750	225	✓	✓	✓	✓	✓			✓	

Model	Size	Max GPM	Max Head-ft.	Diesel, Bio-Diesel, Fuel Oil	Cast Iron Volute	Cast Iron Impeller	Steel Wear Plate	Shaft Clamp Stainless Steel	TEFC Electric Motor	X-P Electric Motor - CI I., Gr. D	Pumpak	Pedestal	w/ Engine	w/ Hyd. Motor
PO5	1.5"	145	100	✓	✓	✓	✓	✓	✓		✓			
PO8	2"	150	100	✓	✓	✓	✓	✓	✓	✓	✓	✓	✓	✓
PO10	2"	225	145	✓	✓	✓	✓	✓	✓	✓	✓	✓	✓	
PO15	3"	320	145	✓	✓	✓	✓	✓	✓	✓	✓	✓		✓
PO30	3"	500	190	✓	✓	✓	✓	✓	✓	✓	✓	✓		
PO40	4"	750	225	✓	✓	✓	✓	✓				✓		

Model	Size	Max GPM	Max Head-ft.	Ethanol, E-85	Ductile Iron Volute	Aluminum Impeller	Steel Wear Plate	Shaft Clamp Lead Free Brass	X-P Electric Motor - CI I., Gr. D	Pumpak	Pedestal	w/Hyd. Motor
PE8	2"	150	100	✓	✓	✓	✓	✓	✓	✓	✓	
PE10	2"	225	145	✓	✓	✓	✓	✓	✓		✓	
PE15	3"	320	145	✓	✓	✓	✓	✓	✓		✓	✓
PE30	3"	500	190	✓	✓	✓	✓	✓	✓		✓	
PE40	4"	750	225	✓	✓	✓	✓	✓	✓		✓	

“The safest road to hell is the gradual one—the gentle slope, soft underfoot, without sudden turnings, without milestones, without signposts.”

—C. S. Lewis



[brtmarine.com](http://brtmarine.com)

800-725-3787

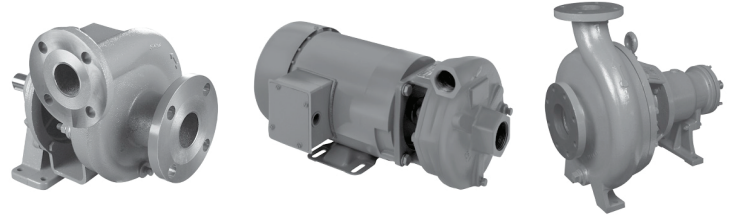
YOUR SOURCE FOR



BR

# END SUCTION CENTRIFUGAL PUMPS MATERIALS OF CONSTRUCTION / OPTIONS

## PETROLMAXX®



### END SUCTION CENTRIFUGAL PUMPS - S SERIES

Model	Size	Max GPM	Max Head-ft.	Gasoline, AVGas, Kerosene, Jet A/8	Ductile Iron Volute	Aluminum Impeller	Aluminum Wear Plate	Shaft Clamp Lead Free Brass	X-P Electric Motor - CI I., Gr. D	Pumpak	Pedestal
SG60	1.25" x 1"	65	115	✓	✓	✓	✓	✓	✓	✓	
SG80	1.5" x 1.25"	80	139	✓	✓	✓	✓	✓	✓	✓	✓
SG120	2" x 1.5"	200	135	✓	✓	✓	✓	✓	✓	✓	✓
SG180	2" x 1.5"	320	160	✓	✓	✓	✓		✓		✓
SG300	3" x 2.5"	540	190	✓	✓	✓	✓		✓		✓
SG700	4" x 3"	925	170	✓	✓	✓	✓		✓		✓

Model	Size	Max GPM	Max Head-ft.	Diesel, Bio-Diesel, Fuel Oil	Cast Iron Volute	Cast Iron Impeller	Steel Wear Plate	Shaft Clamp Stainless Steel	TEFC Electric Motor	X-P Electric Motor - CI I., Gr. D	Pumpak	Pedestal	w/ Hyd. Motor
S060	1.25" x 1"	65	115	✓	✓	✓	✓	✓	✓	✓	✓		
S080	1.5" x 1.25"	80	139	✓	✓	✓	✓	✓	✓	✓		✓	✓
S0120	2" x 1.5"	200	135	✓	✓	✓	✓	✓	✓	✓	✓	✓	
S0180	2" x 1.5"	320	160	✓	✓	✓	✓		✓	✓	✓	✓	
S0300	3" x 2.5"	540	190	✓	✓	✓	✓		✓	✓	✓	✓	
S0700	4" x 3"	925	170	✓	✓	✓	✓		✓	✓	✓	✓	

Model	Size	Max GPM	Max Head-ft.	Ethanol, E-85	Ductile Iron Volute	Aluminum Impeller	Steel Wear Plate	Shaft Clamp Lead Free Brass	X-P Electric Motor - CI I., Gr. D	Pedestal
SE60	1.25" x 1"	65	115	✓	✓	✓	✓	✓	✓	
SE80	1.5" x 1.25"	80	139	✓	✓	✓	✓	✓	✓	✓
SE120	2" x 1.5"	200	135	✓	✓	✓	✓	✓	✓	✓
SE180	2" x 1.5"	320	160	✓	✓	✓	✓		✓	✓
SE300	3" x 2.5"	540	190	✓	✓	✓	✓		✓	✓
SE700	4" x 3"	925	170	✓	✓	✓	✓		✓	✓

"Tolerance is the virtue of the man without convictions."

—Gilbert K. Chesterton

YOUR SOURCE FOR



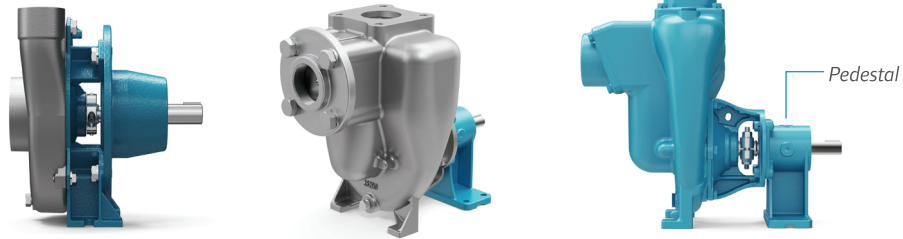
brtmarine.com

800-725-3787



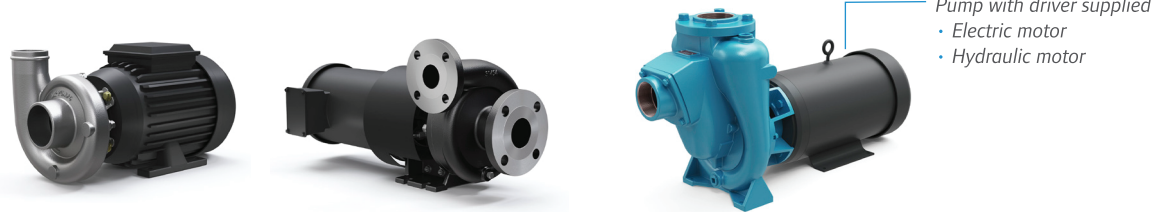
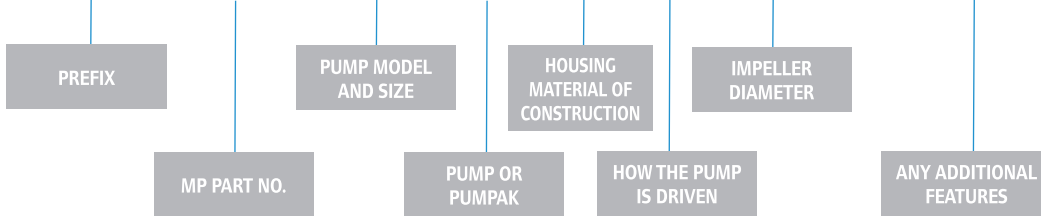
# PUMP MODELING SHEET

Note: Standard Seal Material - Carbon/Ceramic/Viton



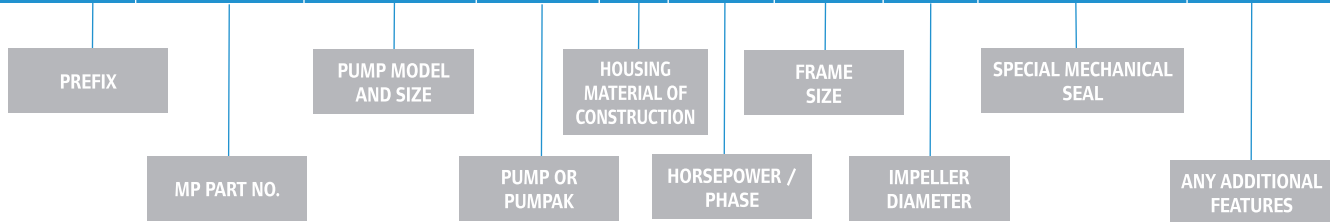
## ▶ PED

MP 21339 FM8 PMP C: PED 5.0 XXX XXX XX



## ▶ PMP

MP 33700 HT080 PMP D: 3-3 56C 5.9 T-2 NRS FF HD



“Christianity, if false, is of no importance, and if true, of infinite importance. The only thing it cannot be is moderately important.”

—C. S. Lewis



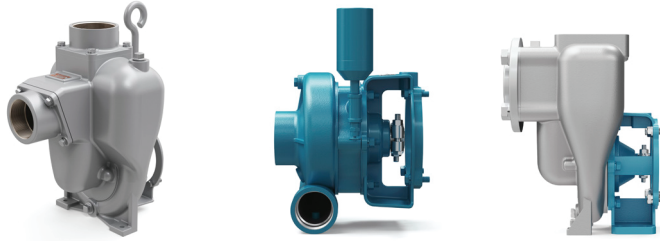
brtmarine.com

800-725-3787

YOUR SOURCE FOR



# PUMP MODELING SHEET



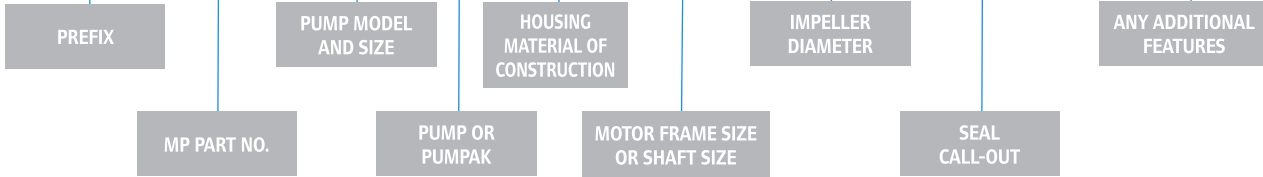
Pump Only (No Motor Driver Supplied)

4 Mounting Options:

- "C" Face Motor
- Pedestal
- Hydraulic Motor
- Engine Mount

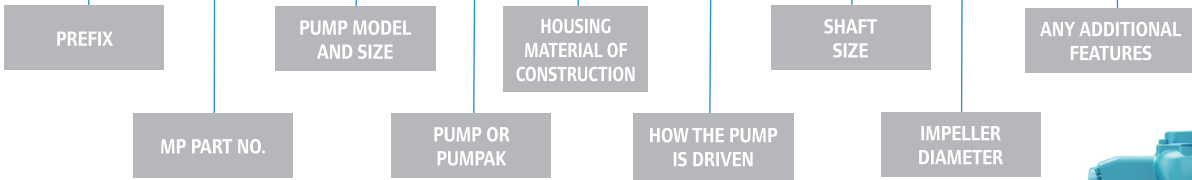
## ► PPK

MP 31383 CF5 PPK SS: 184TC 6.18 T-2100 XXX XXX



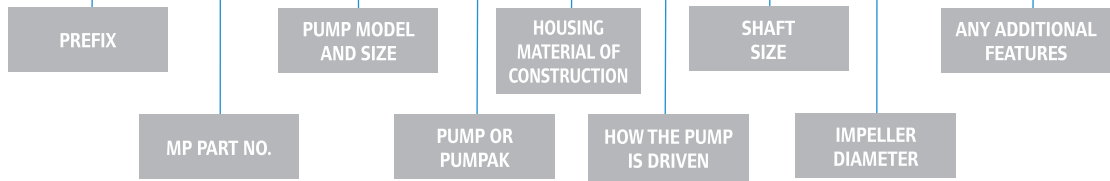
## ► CCMTR - Close-Coupled Motor

MP 30905 FM8 PPK SS: CCMTR 5/8 4.1 XXX XXX



## ► PEM - Pedestal or Engine Mount (Direct coupled to pump)

MP 21327 FM8 PPK C: PEM 3/4 5.0 XXX XXX



- A PEM is a Pump-End Only ready to mount to a Pedestal or an Engine drive.
- Engine can be mounted direct.
- To add an electric motor, a pedestal must be purchased and long coupled to the Pump-End Only.
- For hydraulically driven builds, a hydraulic pedestal can be directly coupled to a PEM Pump-End.







Ampco Pumps Company

**bpc**  
BILLY PUGH Co., Inc.

**Aerovent**

**COSPOLICH**

**AdvanTec**

**BUELL**  
AIR HORNS

**CEN-TEX MARINE**

**CAL-JUNE**

**FORTRESS**  
MARINE STRUCTURE

**CROWN**  
by Crane Pumps & Systems, Inc.

**THE GARLISE & FINCH CO.**

**CRANE**  
PUMPS & SYSTEMS

**CHAMPION**

**cincinnati fan**

**CWC** Continental Western Corporation  
INDUSTRY AT WORK

**CONNELL-CARR**  
MARINE EQUIPMENT

**DEMING**  
by Crane Pumps & Systems, Inc.

**Franklin Electric**

**burks**  
by Crane Pumps & Systems, Inc.

**FREEMAN**  
MARINE EQUIPMENT

**DOMETIC**

**BARNES**  
by CRANE PUMPS & SYSTEMS

**dsg** Diamond Sea Glaze

**HYUNDAI**  
HEAVY INDUSTRIES CO., LTD.

**DATREX**  
Life Saving Products

**Gardner Denver**

**Emerald Marine**  
PRODUCTS

**CHELSEA CLOCK**

**J.M.**

**GRUNDFOS**

**FERNSTRUM**  
R.W. Fernstrum & Company

**Hartzell**

**DURAMAX MARINE**

**GISWOLD**

**JEAMAR WINCHES**

**HAGHT PUMP**  
DIVISION OF BAKER MANUFACTURING COMPANY, LLC.

**imtra**  
CORPORATION

**Hydrasearch**

**GLAMOX**

**H<sub>2</sub>O**

**Kahlenberg**  
KAHLENBERG INDUSTRIES, INC.

**The Humphrey**

**IR** Ingersoll Rand

**MAXIM**  
WATERMAKERS

**NABRICO**

TYPE II MARINE SANITATION DEVICES

**PACKLESS SEALING SYSTEM**  
**SHAFT SEAL**

**MP PUMPS**  
by Gardner Denver

**Mueller Steam Specialty**

**PERKO**

**OBERDORFER**  
by Gardner Denver

**REVERE**  
SURVIVAL INC.

**PROSSER**  
by Crane Pumps & Systems, Inc.

**Morse Rubber**

**POTTER ROEMER**  
FIRE PRO.

**MANCHESTER TANK**

**SKOOKUM**  
Guaranteed Tough Since 1890

**RICE NOZZLES**  
QUALITY IN MOTION

**RICE**  
PROPULSION

**RITCHIE**  
NAVIGATION

**MCDERMOTT LIGHT & SIGNAL**

**SLM** SUPERIOR LIDGERWOOD MUNDY

**VICAN PUMP**

**SPREAD-ALL MFG. CO.**

**VIKING PUMP**

**SEA HORSE**  
MANUFACTURING

**SONIHULL**  
ULTRASONIC ANTI-FOULING SYSTEM

**THETFORD**

**VITRO**  
SEATING PRODUCTS

**WORLDWIDE**  
Electric Corp

**Sea Recovery**

**Weems & Plath**  
INNOVATION ROOTED IN TRADITION

**Wyane Enterprises, Inc.**

**Thern**  
Winches & Cranes

**WAGER**  
COMPANY

**WEINMAN**

**Wintech**  
WINCHES & FAIRLEADS



1172 Camp Street, New Orleans, LA 70130  
800-725-3787 | 504-525-7137  
www.BRTMarine.com