

# CHOCKS

NABRICO offers a wide range of cast steel chocks needed for proper and efficient marine duties. All castings are produced using A27 cast steel and are normally supplied raw from the foundry. While castings are normally preferred in this state, NABRICO has the capability to blast and paint with a zinc primer or provide most castings in Stainless Steel. Chocks are available in a variety of styles and sizes that include: button, open or closed, roller and panama canal chocks. Whatever the job, NABRICO has a chock that meets your needs.



## CHOCKS

|                             |     |
|-----------------------------|-----|
| CAST STEEL BUTTON .....     | 168 |
| CAST STEEL OPEN .....       | 175 |
| CAST STEEL CLOSED .....     | 176 |
| PANAMA CANAL .....          | 177 |
| MOORING RING.....           | 180 |
| FABRICATED BUTTON .....     | 181 |
| COMBINATION BITT.....       | 182 |
| FABRICATED OPEN .....       | 183 |
| FAIRLEAD PEDESTAL.....      | 184 |
| PIVOTING FAIRLEAD.....      | 185 |
| FAIRLEAD ROLLER.....        | 186 |
| STAINLESS STEEL FIXED ..... | 187 |
| STAINLESS STEEL.....        | 189 |
| STAINLESS STEEL BUTTON..... | 190 |

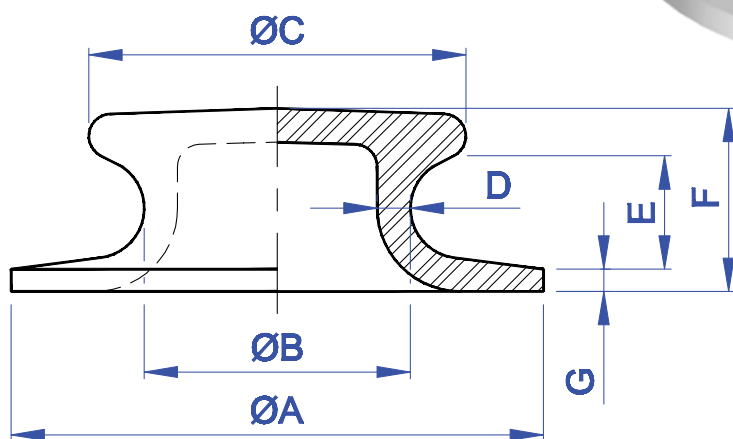
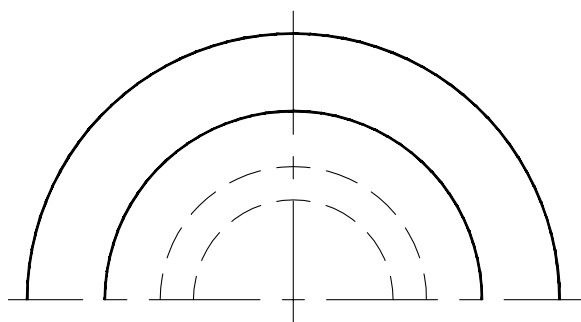
## ROLLER CHOCKS

|                            |     |
|----------------------------|-----|
| SINGE ROLLER.....          | 191 |
| SINGLE ROLLER BUTTON ..... | 195 |
| HEAVY DUTY ROLLER.....     | 197 |
| PIVOTING ROLLER.....       | 198 |





# CAST STEEL 6" BUTTON CHOCK



| MODEL No. | PART No. | SIZE | ØA  | ØB | ØC     | D    | E       | F      | G    | WT. (lbs.) |
|-----------|----------|------|-----|----|--------|------|---------|--------|------|------------|
| DF-192    | 6408     | 6"   | 12" | 6" | 8-1/2" | 3/4" | 2-9/16" | 4-1/8" | 1/2" | 40         |

"It is a document in proof that I am a real Christian, that is to say, a disciple of the doctrines of Jesus, very different from the Platonists, who call me infidel, and themselves Christians and preachers of the gospel, while they draw all their characteristic dogmas from what it's Author never said nor saw. They have compounded from the heathen mysteries a system beyond the comprehension of man, of which the great reformer of the vicious ethics and deism of the Jews, were he to return on earth, would not recognise one feature."

—Thomas Jefferson



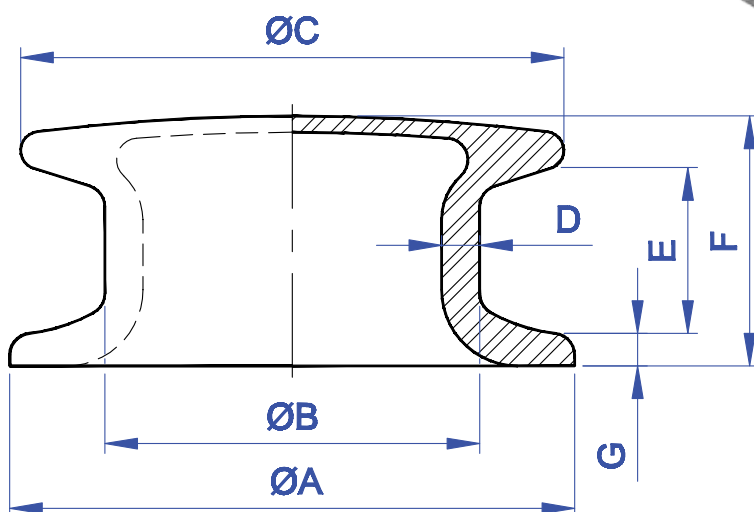
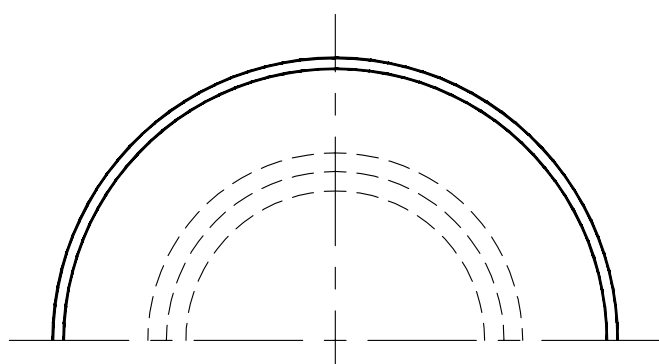
brtmarine.com 800-725-3787

PROUD DISTRIBUTOR OF  
**NABRICO**

The specifications and details described by drawings or text in this literature are subject to change without notice.



# CAST STEEL 8" BUTTON CHOCK



| MODEL No. | PART No. | SIZE | ØA  | ØB     | ØC      | D    | E      | F      | G    | WT. (lbs.) |
|-----------|----------|------|-----|--------|---------|------|--------|--------|------|------------|
| DF-473C   | 77461    | 8"   | 13" | 8-5/8" | 12-1/2" | 7/8" | 3-3/4" | 5-3/4" | 3/4" | 75         |

"We, the General Assembly of Virginia, do enact that no man shall be compelled to frequent or support any religious worship, place, or ministry whatsoever, nor shall be enforced, restrained, molested, or burthened in his body or goods, or shall otherwise suffer, on account of his religious opinions of belief; but that all men shall be free to profess, and by argument to maintain, their opinions in matters of religion, and that the same shall in no wise diminish, enlarge, or affect their civil capabilities."

—Thomas Jefferson

PROUD DISTRIBUTOR OF  
**NABRICO**

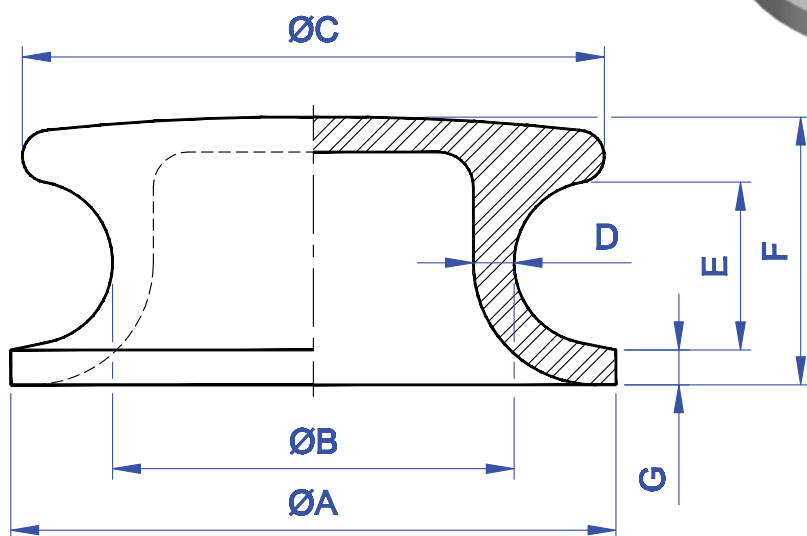
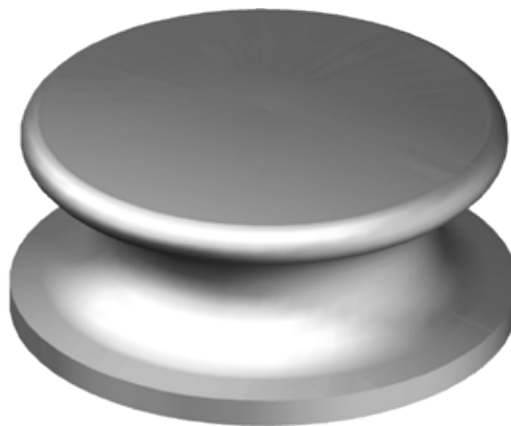
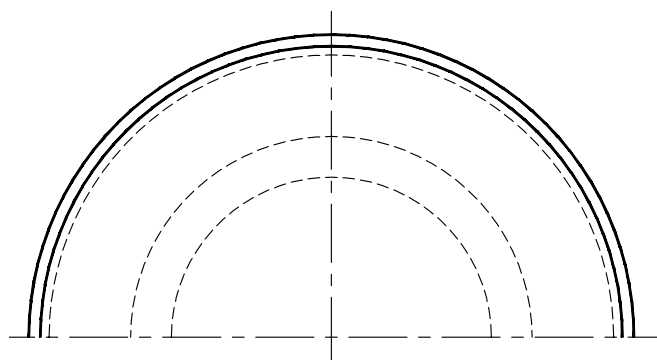
brtmarine.com 800-725-3787



The specifications and details described by drawings or text in this literature are subject to change without notice.



# CAST STEEL 8" BUTTON CHOCK



| MODEL No. | PART No. | SIZE | ØA  | ØB     | ØC      | D    | E      | F      | G    | WT. (lbs.) |
|-----------|----------|------|-----|--------|---------|------|--------|--------|------|------------|
| DF-542    | 89990    | 8"   | 13" | 8-5/8" | 12-1/2" | 7/8" | 3-5/8" | 5-3/4" | 3/4" | 75         |

"A strict observance of the written laws is doubtless one of the high duties of a good citizen, but it is not the highest. The laws of necessity, of self preservation, of saving our country when in danger, are of a higher obligation. ... To lose our country by a scrupulous adherence to written law would be to lose the law itself, with life, liberty, property and all those who are enjoying them with us; thus absurdly sacrificing the ends to the means."

—Thomas Jefferson



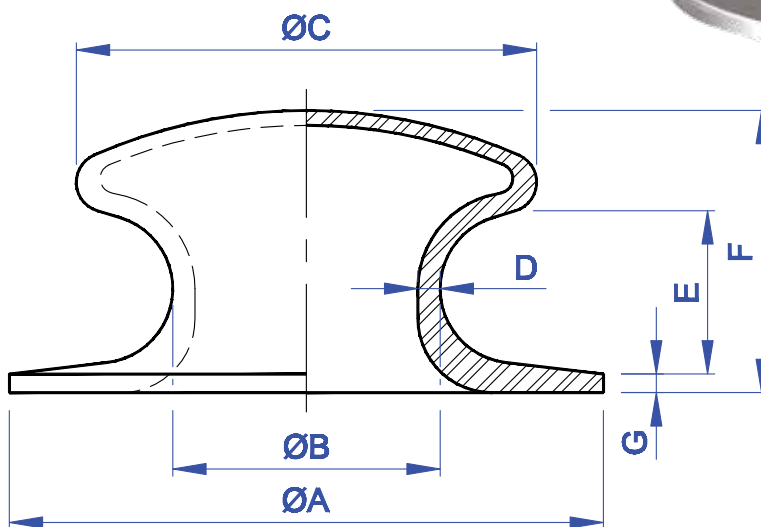
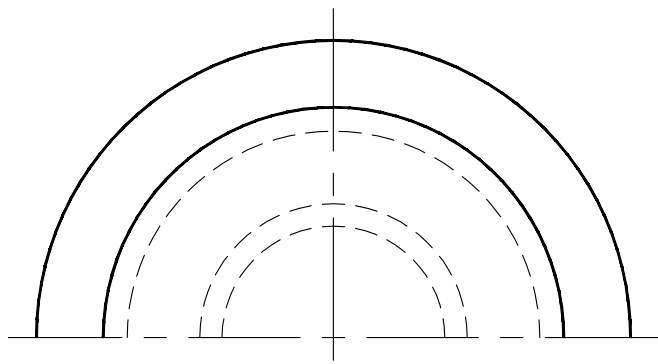
brtmarine.com 800-725-3787

PROUD DISTRIBUTOR OF  
**NABRICO**

The specifications and details described by drawings or text in this literature are subject to change without notice.



# CAST STEEL 9" BUTTON CHOCK



| MODEL No. | PART No. | SIZE | ØA  | ØB | ØC      | D    | E      | F      | G    | WT. (lbs.) |
|-----------|----------|------|-----|----|---------|------|--------|--------|------|------------|
| DF-194    | 16128    | 9"   | 20" | 9" | 15-1/2" | 3/4" | 5-1/2" | 9-1/2" | 5/8" | 158        |

"Rightful liberty is unobstructed action according to our will within limits drawn around us by the equal rights of others. I do not add 'within the limits of the law' because law is often but the tyrant's will, and always so when it violates the rights of the individual."

—Thomas Jefferson

PROUD DISTRIBUTOR OF   
**NABRICO**

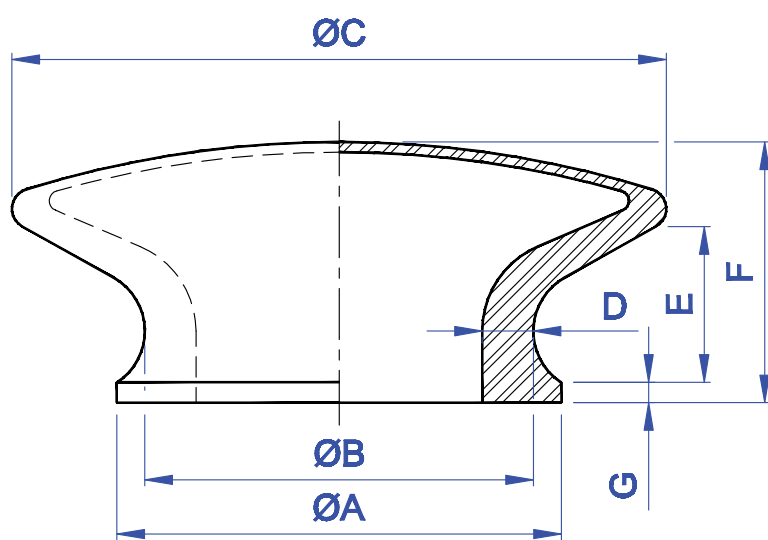
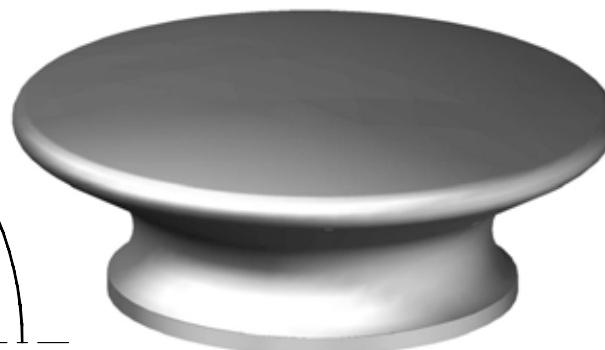
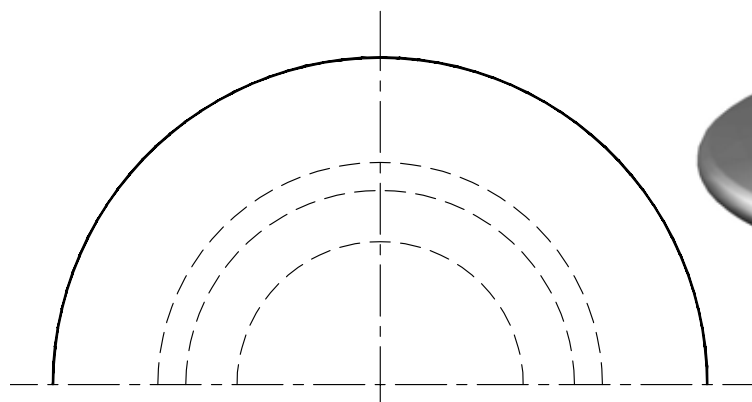
[brtmarine.com](http://brtmarine.com) 800-725-3787



*The specifications and details described by drawings or text in this literature are subject to change without notice.*



# CAST STEEL 9 1/2" BUTTON CHOCK



| MODEL No. | PART No. | SIZE   | ØA      | ØB     | ØC  | D      | E      | F      | G    | WT. (lbs.) |
|-----------|----------|--------|---------|--------|-----|--------|--------|--------|------|------------|
| DF-176    | 13838    | 9-1/2" | 10-7/8" | 9-1/2" | 16" | 1-1/4" | 3-3/4" | 6-3/8" | 1/2" | 84         |

"As to myself, I love peace, and I am anxious that we should give the world still another useful lesson, by showing to them other modes of punishing injuries than by war, which is as much a punishment to the punisher as to the sufferer."

—Thomas Jefferson



brtmarine.com 800-725-3787

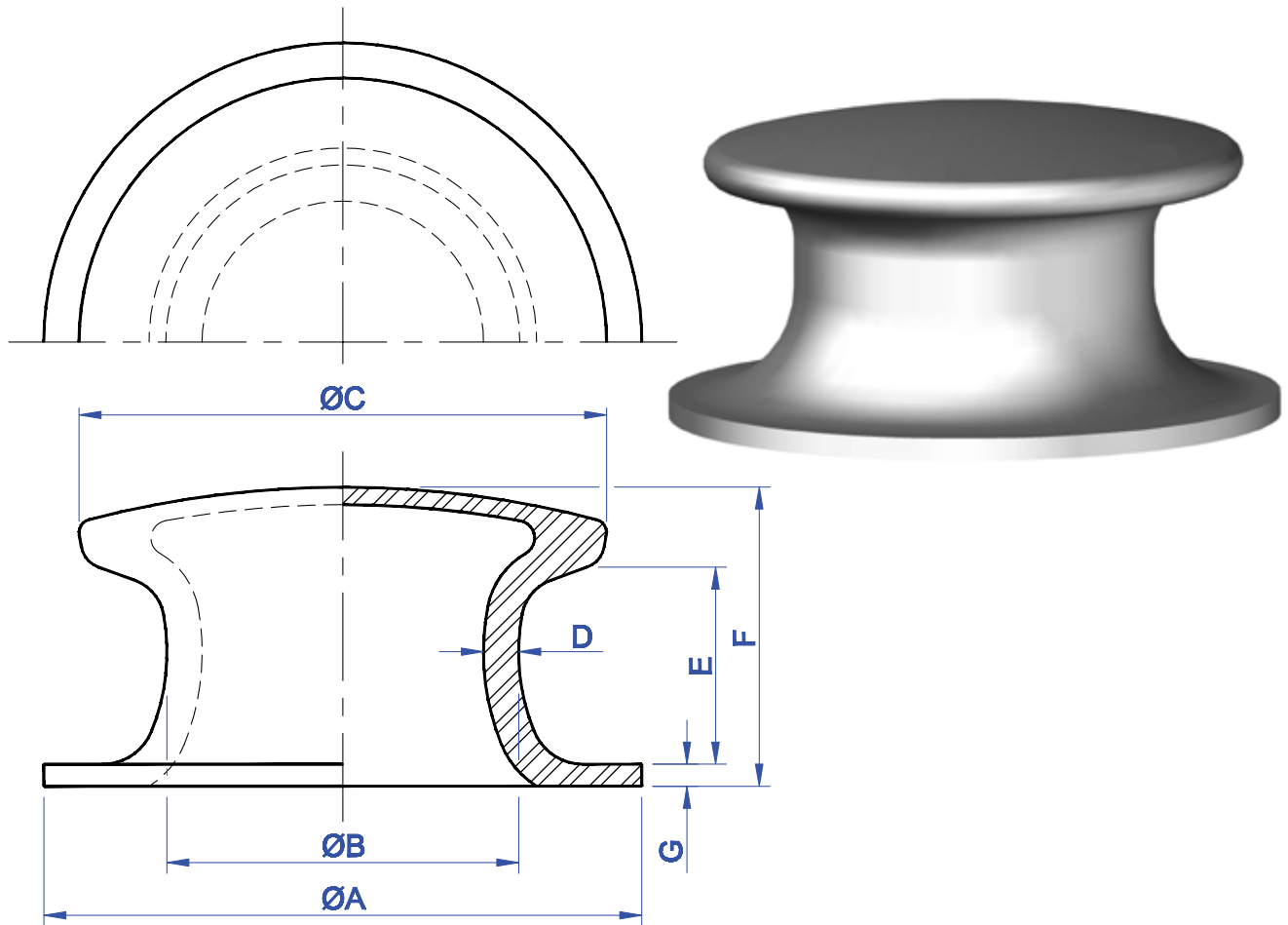
PROUD DISTRIBUTOR OF  
**NABRICO**

The specifications and details described by drawings or text in this literature are subject to change without notice.



# CAST STEEL 10" BUTTON CHOCK

BR



| MODEL No. | PART No. | SIZE | ØA  | ØB  | ØC  | D  | E      | F      | G    | WT. (lbs.) |
|-----------|----------|------|-----|-----|-----|----|--------|--------|------|------------|
| DF-185    | 14567    | 10"  | 17" | 10" | 15" | 1" | 5-3/4" | 8-1/2" | 5/8" | 145        |

"What we obtain too cheap, we esteem too lightly: it is dearness only that gives every thing its value. Heaven knows how to put a proper price upon its goods; and it would be strange indeed if so celestial an article as freedom should not be highly rated."

—Thomas Paine

PROUD DISTRIBUTOR OF  
**NABRICO**

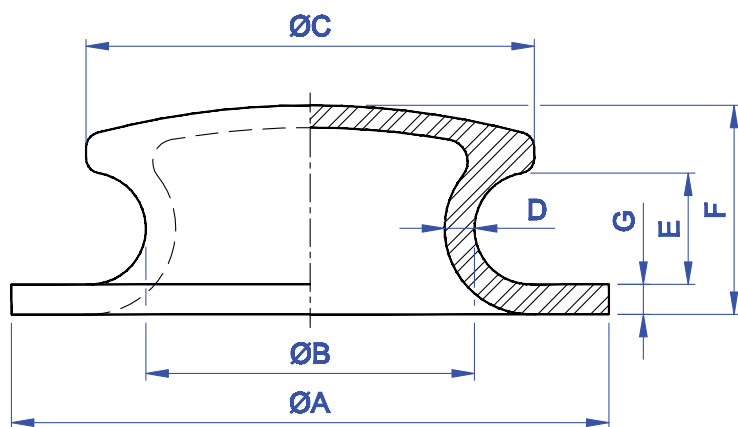
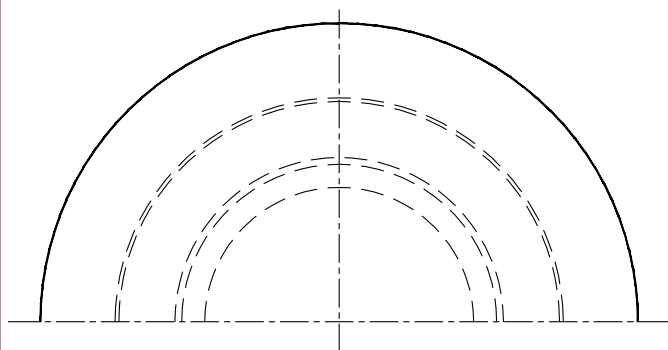
brtmarine.com 800-725-3787



The specifications and details described by drawings or text in this literature are subject to change without notice.



# CAST STEEL 11" BUTTON CHOCK



CHOCKS

| MODEL No. | PART No. | SIZE | ØA  | ØB  | ØC  | D  | E      | F  | G  | WT. (lbs.) |
|-----------|----------|------|-----|-----|-----|----|--------|----|----|------------|
| DF-538    | 89907    | 11"  | 20" | 11" | 15" | 1" | 3-3/4" | 7" | 1" | 165        |

"Freedom hath been hunted round the globe. Asia and Africa have long expelled her. Europe regards her like a stranger, and England hath given her warning to depart. O! Receive the fugitive, and prepare in time an asylum for mankind."

—Thomas Paine



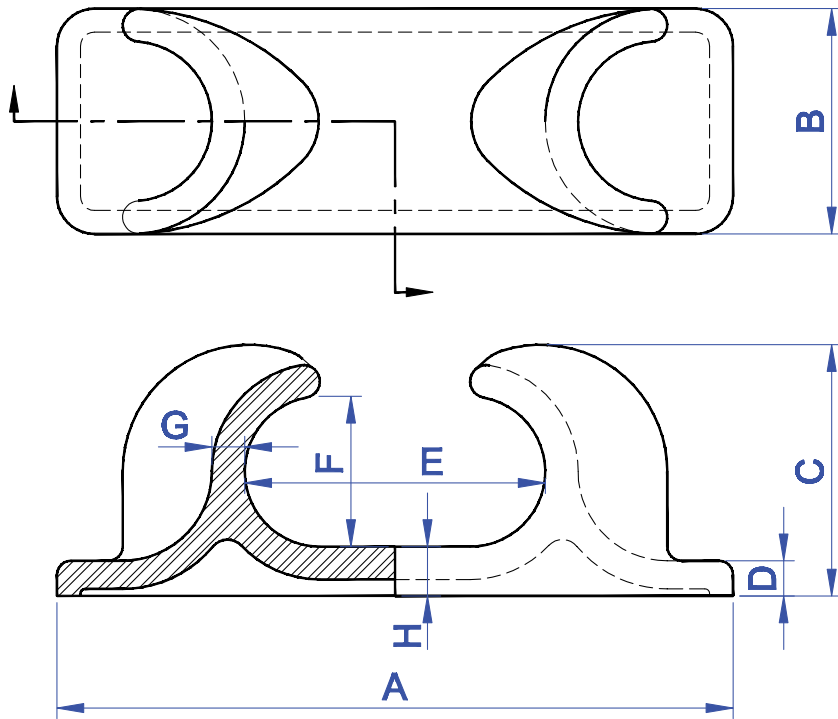
brtmarine.com 800-725-3787

PROUD DISTRIBUTOR OF  
**NABRICO**

The specifications and details described by drawings or text in this literature are subject to change without notice.



# CAST STEEL OPEN CHOCK



| MODEL No. | PART No. | SIZE | A       | B   | C       | D       | E       | F      | G      | H        | WT. (lbs.) |
|-----------|----------|------|---------|-----|---------|---------|---------|--------|--------|----------|------------|
| DF-496    | 89451    | 4x8  | 19-3/4" | 6"  | 6-3/4"  | 1-1/8"  | 8"      | 4"     | 1"     | 1-3/8"   | 75         |
| DF-495    | 89443    | 5x11 | 25-1/4" | 8"  | 9"      | 1-5/16" | 10-3/4" | 5-3/8" | 1-1/4" | 1-13/16" | 132        |
| DF-485    | 20362    | 6x12 | 27-3/4" | 9"  | 10-1/8" | 1-1/2"  | 12"     | 6"     | 1-3/8" | 2-1/16"  | 175        |
| DF-489    | 89346    | 8x16 | 36"     | 12" | 13-3/8" | 1-7/8"  | 16"     | 8"     | 1-3/4" | 2-5/8"   | 435        |

"It is the will of the Almighty, that there should be diversity of religious opinions among us: It affords a larger field for our Christian kindness. Were we all of one way of thinking, our religious dispositions would want matter for probation; and on this liberal principle, I look on the various denominations among us, to be like children of the same family, differing only, in what is called, their Christian names."

—Thomas Paine

PROUD DISTRIBUTOR OF  
**NABRICO**

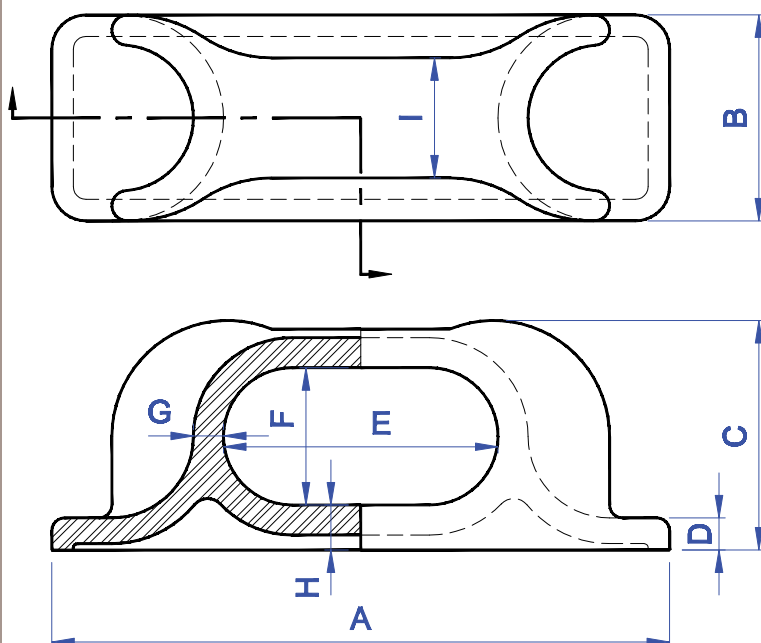
brtmarine.com 800-725-3787



The specifications and details described by drawings or text in this literature are subject to change without notice.



# CAST STEEL CLOSED CHOCK



| MODEL No. | PART No. | SIZE | A       | B   | C       | D      | E   | F  | G      | H       | I      | WT. (lbs.) |
|-----------|----------|------|---------|-----|---------|--------|-----|----|--------|---------|--------|------------|
| DF-497    | 89478    | 4x8  | 19-3/4" | 6"  | 6-3/4"  | 1-1/8" | 8"  | 4" | 1"     | 1-3/8"  | 3-1/2" | 84         |
| DF-480    | 89397    | 6x12 | 27-3/4" | 9"  | 10-1/8" | 1-1/2" | 12" | 6" | 1-3/8" | 2-1/16" | 5-1/4" | 191        |
| DF-490    | 89354    | 8x16 | 36"     | 12" | 13-3/8" | 1-7/8" | 16" | 8" | 1-3/4" | 2-5/8"  | 7"     | 455        |

"The supposed quietude of a good man allures the ruffian; while on the other hand, arms like laws discourage and keep the invader and plunderer in awe, and preserve order in the world as well as property. The same balance would be preserved were all the world destitute of arms, for all would be alike; but since some will not, others dare not lay them aside... Horrid mischief would ensue were one half the world deprived of the use of them..."

—Thomas Paine



brtmarine.com 800-725-3787

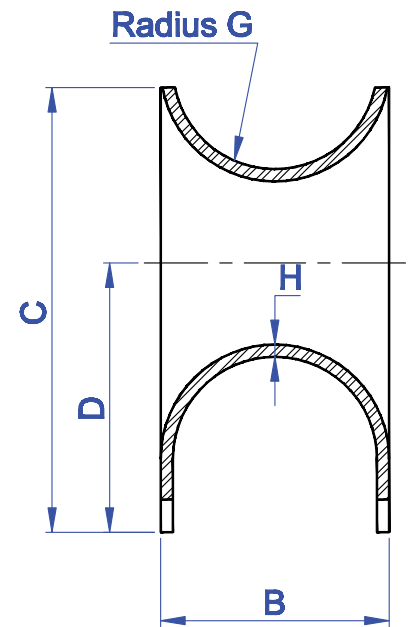
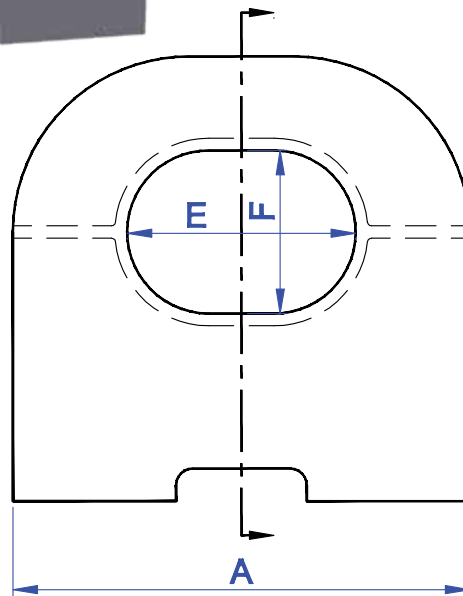
PROUD DISTRIBUTOR OF  
**NABRICO**

The specifications and details described by drawings or text in this literature are subject to change without notice.



# CAST STEEL PANAMA CANAL CHOCK

BR



| MODEL No. | PART No. | SIZE  | A   | B   | C       | D       | E   | F   | G      | H    | WT. (lbs.) |
|-----------|----------|-------|-----|-----|---------|---------|-----|-----|--------|------|------------|
| DF-531    | 21602    | 12x10 | 26" | 14" | 22"     | 12"     | 12" | 10" | 6-5/8" | 3/4" | 295        |
| DF-531    | 21601    | 14x10 | 28" | 14" | 27-1/4" | 16-1/2" | 14" | 10" | 6-1/4" | 3/4" | 355        |
| DF-531    | 21560    | 16x10 | 30" | 14" | 24-1/4" | 16-1/2" | 16" | 10" | 7"     | 3/4" | 395        |

"Liberty is the power to do everything that does not interfere with the rights of others: thus, the exercise of the natural rights of every individual has no limits save those that assure to other members of society the enjoyment of the same rights."

—Thomas Paine

PROUD DISTRIBUTOR OF  
**NABRICO**

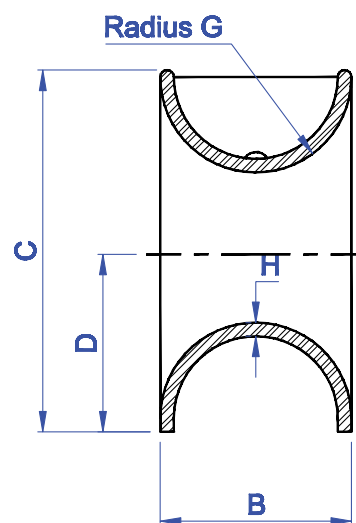
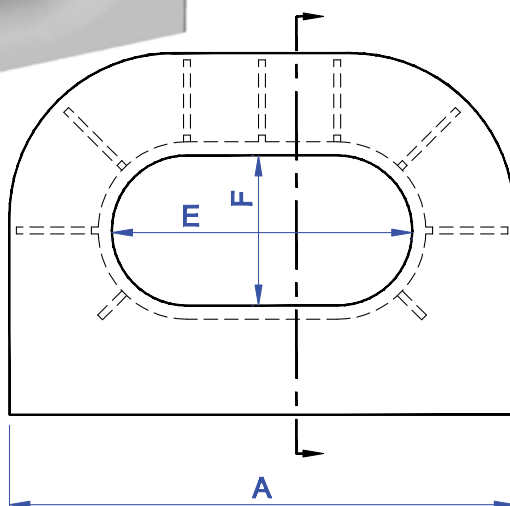
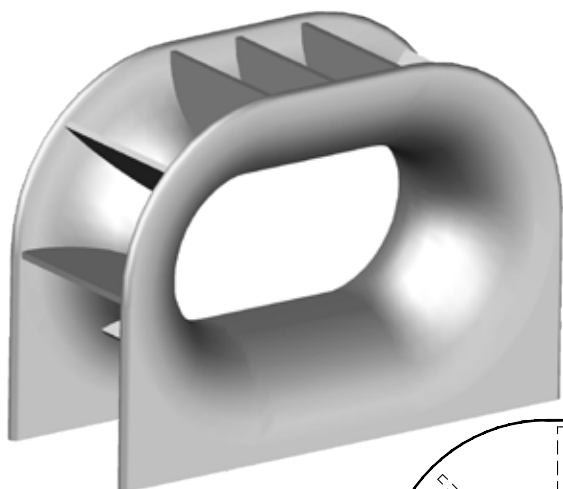
brtmarine.com 800-725-3787



The specifications and details described by drawings or text in this literature are subject to change without notice.



# CAST STEEL PANAMA CANAL CHOCK



| MODEL No. | PART No. | SIZE  | A   | B   | C       | D       | E   | F   | G  | H      | WT. (lbs.) |
|-----------|----------|-------|-----|-----|---------|---------|-----|-----|----|--------|------------|
| DF-531    | 21554    | 22x11 | 37" | 14" | 26-1/2" | 13-1/2" | 22" | 11" | 7" | 1"     | 790        |
| DF-531    | 21607    | 18x12 | 33" | 14" | 31-1/2" | 18"     | 18" | 12" | 7" | 1-1/8" | 1140       |
| DF-531    | 21609    | 24x12 | 41" | 16" | 34-1/2" | 20"     | 24" | 12" | 8" | 1-1/8" | 1200       |

War involves in its progress such a train of unforeseen circumstances that no human wisdom can calculate the end; it has but one thing certain, and that is to increase taxes."

—Thomas Paine



brtmarine.com 800-725-3787

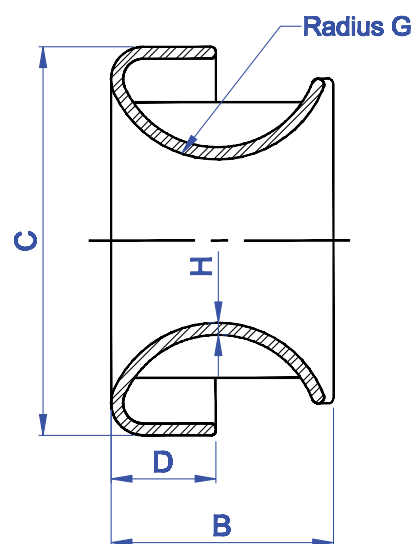
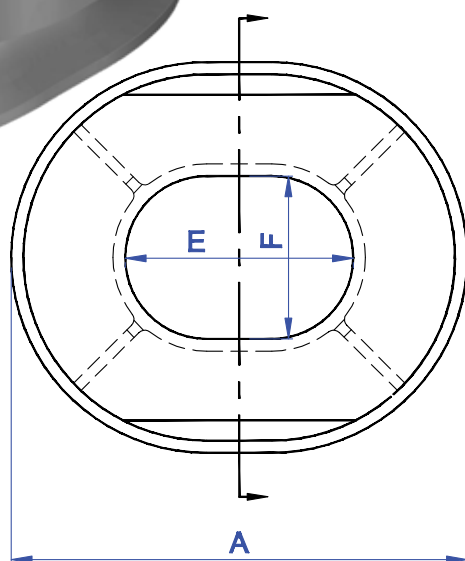
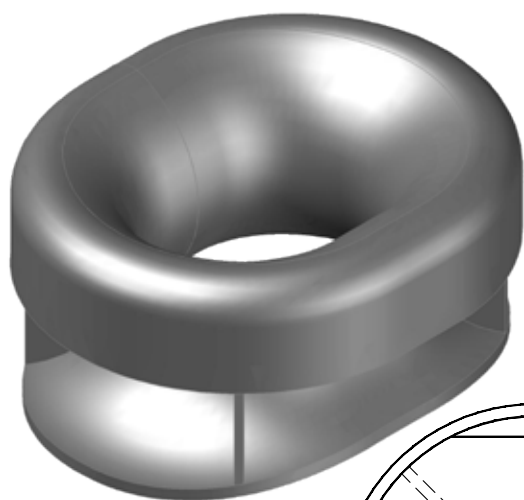
PROUD DISTRIBUTOR OF  
**NABRICO**

The specifications and details described by drawings or text in this literature are subject to change without notice.



# CAST STEEL PANAMA CANAL CHOCK (BULWARK)

BR



| MODEL No. | PART No. | SIZE  | A       | B       | C       | D      | E   | F   | G  | H    | WT. (lbs.) |
|-----------|----------|-------|---------|---------|---------|--------|-----|-----|----|------|------------|
| DF-531    | 21551    | 12x10 | 25-1/2" | 13-1/2" | 23-1/2" | 6-1/2" | 12" | 10" | 7" | 3/4" | 256        |
| DF-531    | 21550    | 14x10 | 27-1/2" | 13-1/2" | 23-1/2" | 6-1/2" | 14" | 10" | 7" | 3/4" | 410        |

"Those who cry out that the government should 'do something' never even ask for data on what has actually happened when the government did something, compared to what actually happened when the government did nothing."

—Thomas Sowell

PROUD DISTRIBUTOR OF  
**NABRICO**

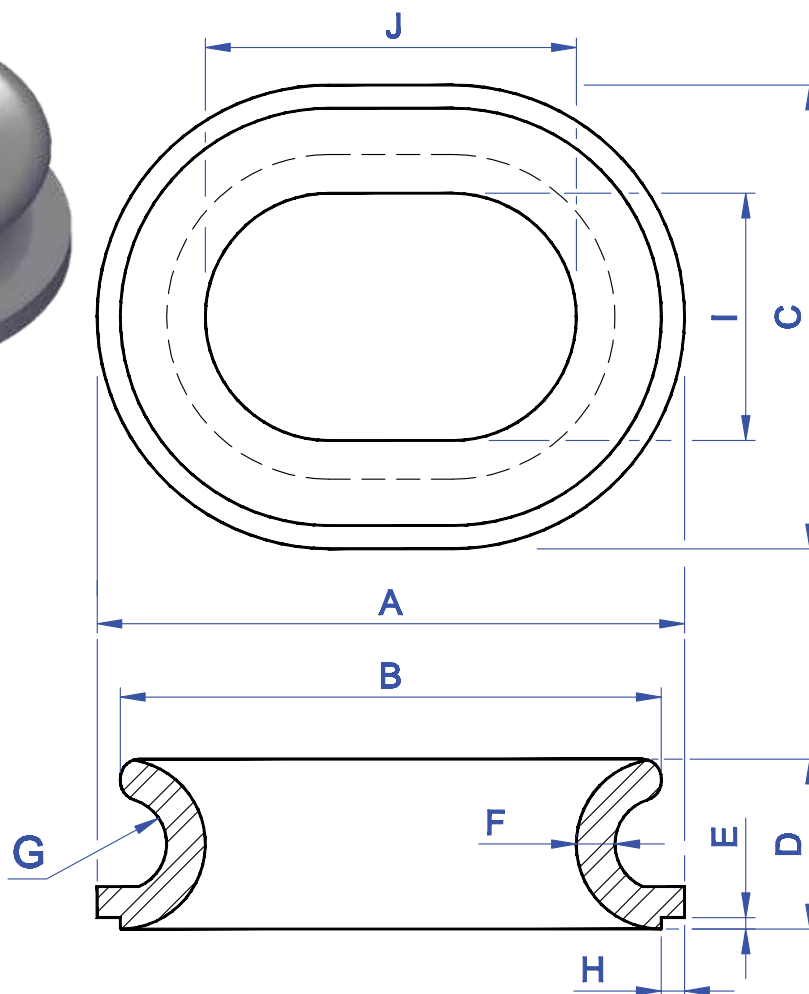
brtmarine.com 800-725-3787



The specifications and details described by drawings or text in this literature are subject to change without notice.



# CAST STEEL MOORING RING



| MODEL No. | PART No. | SIZE | A   | B       | C   | D      | E    | F      | G      | H    | I  | J   | WT. (lbs.) |
|-----------|----------|------|-----|---------|-----|--------|------|--------|--------|------|----|-----|------------|
| DF-528    | 21512    | 8x12 | 19" | 17-1/2" | 15" | 5-1/2" | 3/8" | 1-1/4" | 1-1/2" | 3/4" | 8" | 12" | 130        |

"What is ominous is the ease with which some people go from saying that they don't like something to saying that the government should forbid it. When you go down that road, don't expect freedom to survive very long."

—Thomas Sowell



brtmarine.com 800-725-3787

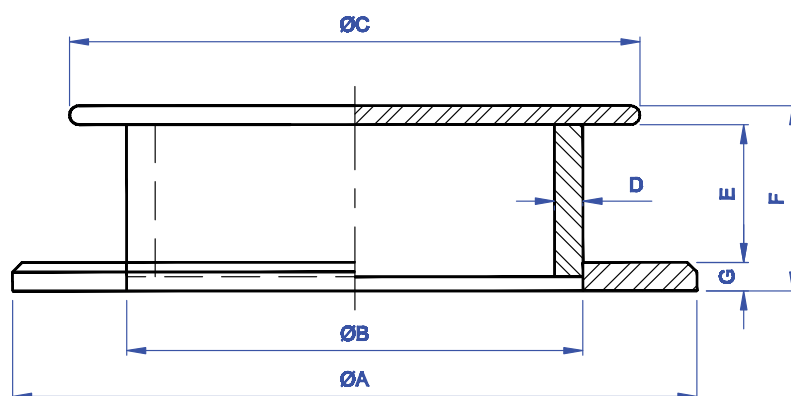
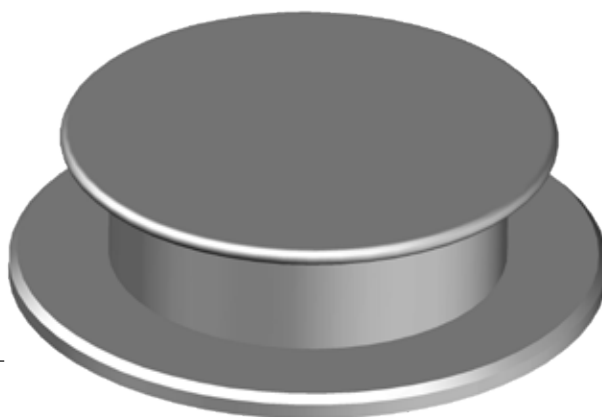
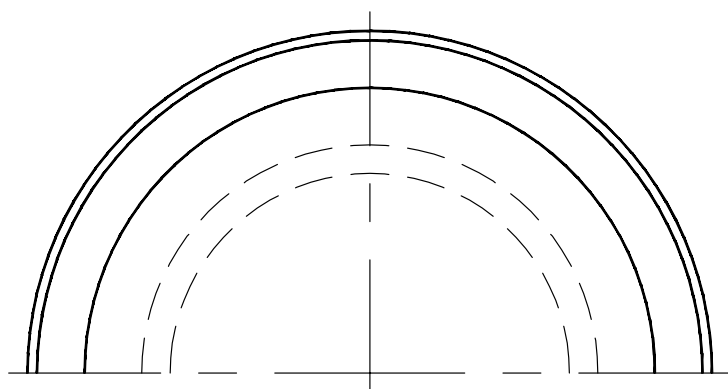
PROUD DISTRIBUTOR OF  
**NABRICO**

The specifications and details described by drawings or text in this literature are subject to change without notice.



# FABRICATED STEEL BUTTON CHOCK

BR



| MODEL No. | PART No. | SIZE   | ØA      | ØB     | ØC      | D    | E      | F      | G    | WT. (lbs.) |
|-----------|----------|--------|---------|--------|---------|------|--------|--------|------|------------|
| DF-148    | 6611     | 3-1/2" | 8"      | 3-1/2" | 7"      | N/A  | 1-3/4" | 3-1/4" | 1"   | 25         |
| DF-129    | 6689     | 8-1/2" | 14-5/8" | 8-5/8" | 11-5/8" | 7/8" | 1-3/4" | 3"     | 3/4" | 52         |
| DF-158    | 6506     | 8-1/2" | 14-5/8" | 8-5/8" | 11-5/8" | 7/8" | 3"     | 4-1/4" | 3/4" | 62         |
| DF-129A   | 6662     | 11"    | 17"     | 11"    | 14"     | 1"   | 1-3/4" | 3"     | 3/4" | 70         |
| DF-158A   | 6492     | 12"    | 18"     | 12"    | 15"     | 3/4" | 3-5/8" | 4-7/8" | 3/4" | 95         |

CHOCKS

"The problem isn't that Johnny can't read. The problem isn't even that Johnny can't think. The problem is that Johnny doesn't know what thinking is; he confuses it with feeling."

—Thomas Sowell

PROUD DISTRIBUTOR OF  
**NABRICO**

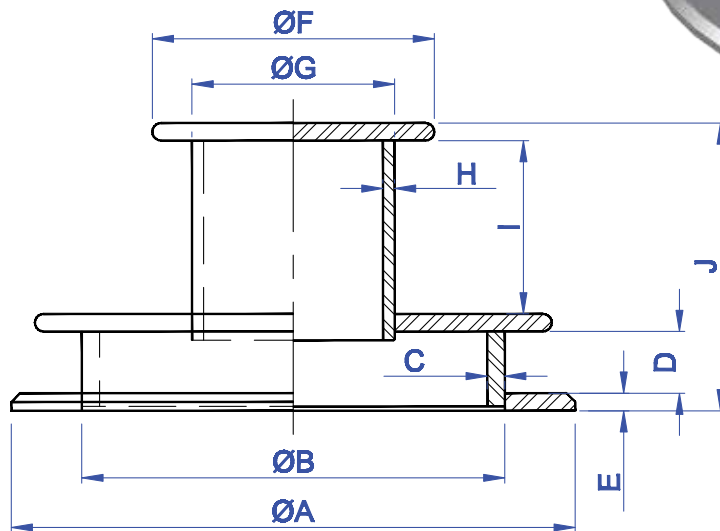
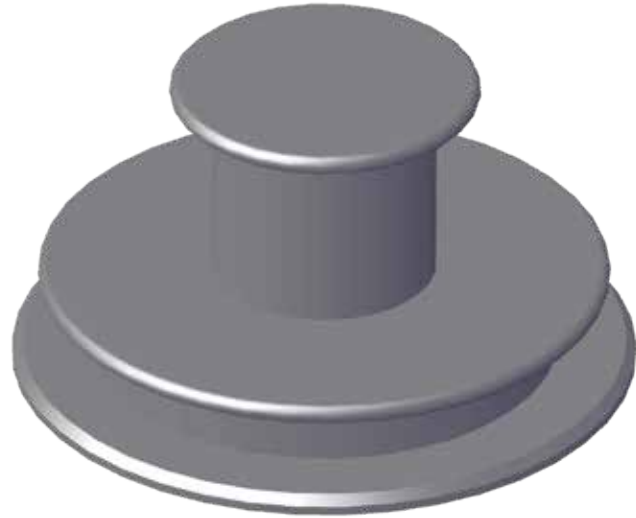
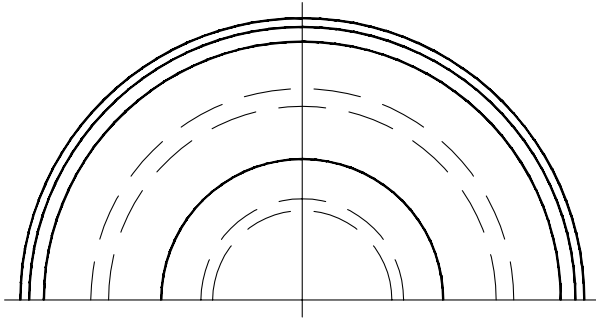
brtmarine.com 800-725-3787



The specifications and details described by drawings or text in this literature are subject to change without notice.



# FABRICATED STEEL COMBINATION BITT



CHOCKS

| MODEL No. | PART No. | $\varnothing A$ | $\varnothing B$ | C    | D      | E    | $\varnothing F$ | $\varnothing G$ | H    | I      | J       | WT. (lbs.) |
|-----------|----------|-----------------|-----------------|------|--------|------|-----------------|-----------------|------|--------|---------|------------|
| DF-163    | 13803    | 24"             | 18"             | 3/4" | 2-5/8" | 3/4" | 12"             | 8-5/8"          | 1/2" | 7-3/8" | 12-1/4" | 210        |

"People who identify themselves as conservatives donate money to charity more often than people who identify themselves as liberals. They donate more money and a higher percentage of their incomes."

—Thomas Sowell



brtmarine.com 800-725-3787

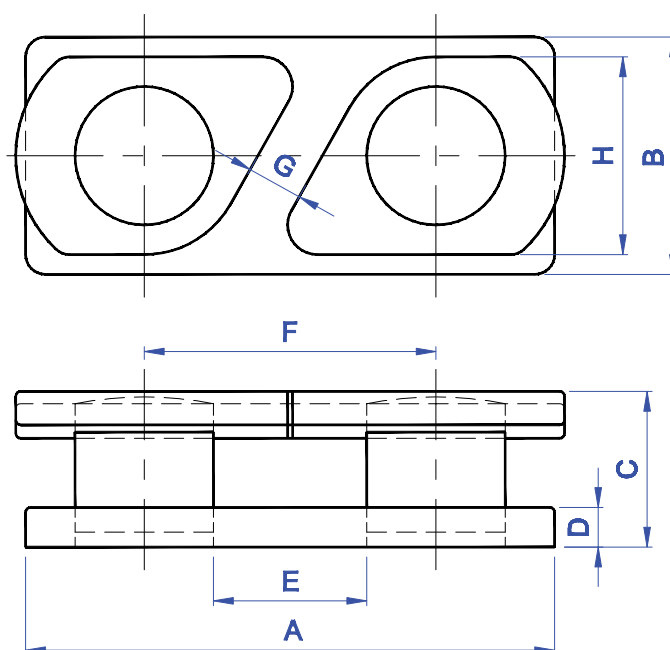
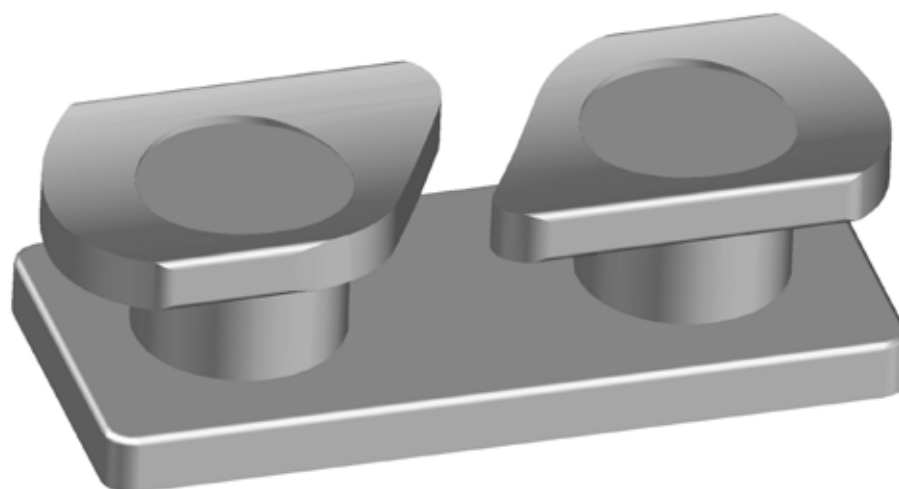
PROUD DISTRIBUTOR OF  
**NABRICO**

The specifications and details described by drawings or text in this literature are subject to change without notice.



# FABRICATED STEEL OPEN CHOCK

BR



| MODEL No. | PART No. | A       | B  | C  | D  | E      | F      | G      | H  | WT. (lbs.) |
|-----------|----------|---------|----|----|----|--------|--------|--------|----|------------|
| DF-149    | 6602     | 13-3/8" | 6" | 4" | 1" | 3-7/8" | 7-3/8" | 1-3/8" | 5" | 47         |

"If you have always believed that everyone should play by the same rules and be judged by the same standards, that would have gotten you labeled a radical 60 years ago, a liberal 30 years ago and a racist today."

—Thomas Sowell



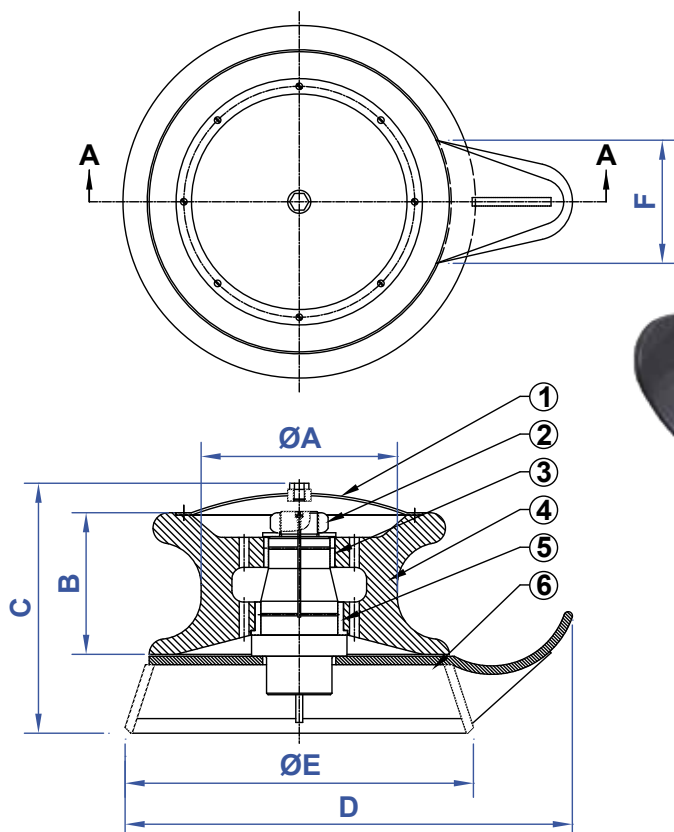
PROUD DISTRIBUTOR OF  
**NABRICO**

brtmarine.com 800-725-3787

The specifications and details described by drawings or text in this literature are subject to change without notice.



# FAIRLEAD PEDESTAL ROLLER



| PIECE No. | DESCRIPTION           | QTY | MATERIAL   |
|-----------|-----------------------|-----|------------|
| 1         | COVER                 | 1   | STEEL      |
| 2         | SECURING NUT          | 1   | STEEL      |
| 3         | TOP ROLLER BUSHING    | 1   | BRONZE     |
| 4         | ROLLER BODY           | 1   | CAST STEEL |
| 5         | BOTTOM ROLLER BUSHING | 1   | BRONZE     |
| 6         | BASE ASSEMBLY         | 1   | STEEL      |

| MODEL No. | PART No. | SIZE | ØA  | B       | C        | D       | ØE      | F       | WT. (lbs.) |
|-----------|----------|------|-----|---------|----------|---------|---------|---------|------------|
| DF-517-12 | 84650    | 12"  | 12" | 10-5/8" | 21-3/16" | 26-1/2" | 22"     | 7"      | 510        |
| DF-517-20 | 84655    | 20"  | 20" | 14-1/2" | 25"      | 45-1/4" | 35-5/8" | 12-1/2" | 750        |

"The real minimum wage is zero."

—Thomas Sowell



brtmarine.com 800-725-3787

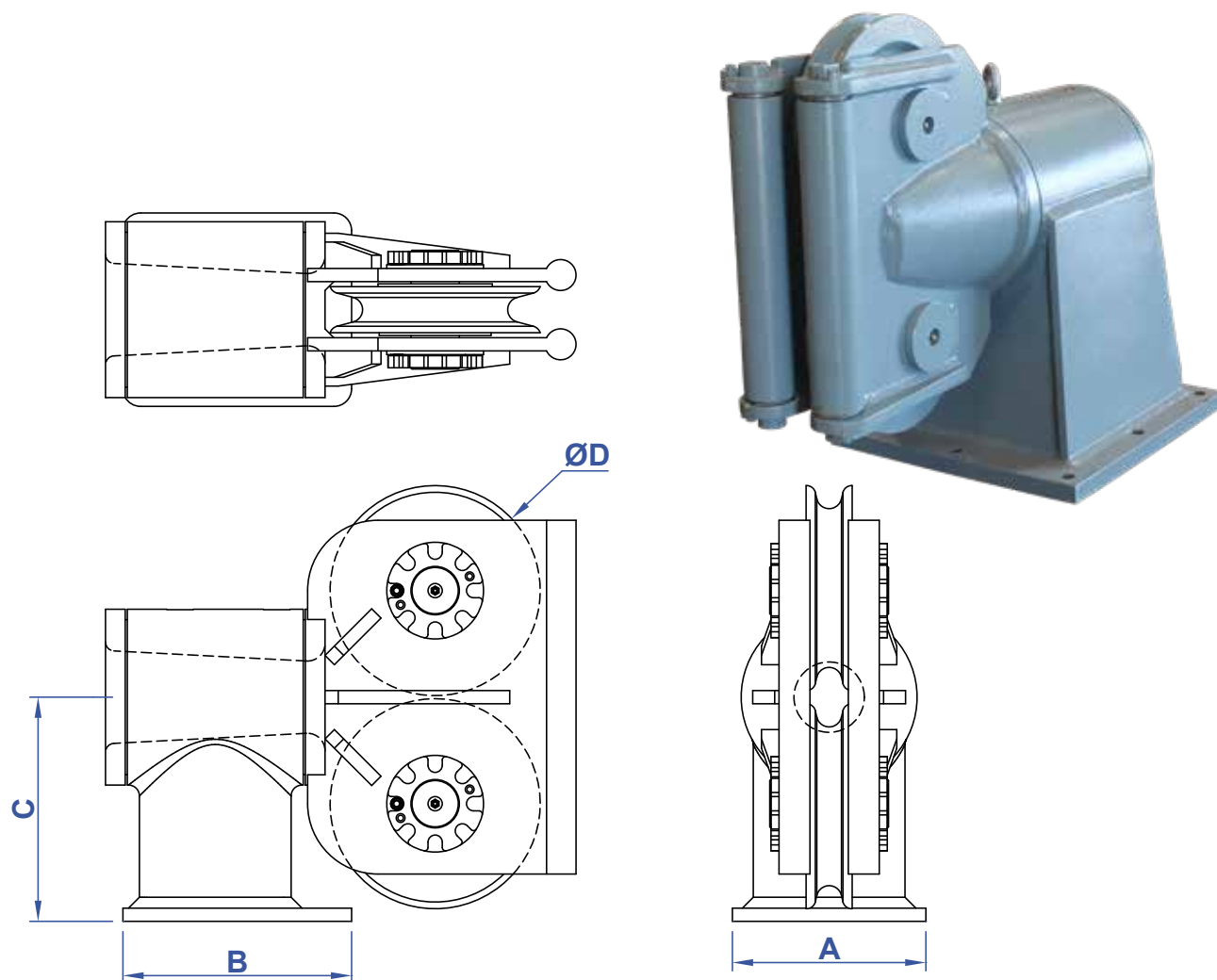
PROUD DISTRIBUTOR OF  
**NABRICO**

The specifications and details described by drawings or text in this literature are subject to change without notice.



# PIVOTING FAIRLEAD

BR  
T



| MODEL No. | PART No. | MAX WIRE SIZE | A       | B       | C       | ØD      |
|-----------|----------|---------------|---------|---------|---------|---------|
| PF20      | 14700    | 3/4"          | 15-3/4" | 16-3/4" | 13-3/4" | 9-7/8"  |
| PF25      | 14701    | 1"            | 15-3/4" | 16-3/4" | 14-1/8" | 9-7/8"  |
| PF38      | 14702    | 1-1/2"        | 29-7/8" | 29-7/8" | 19-1/4" | 15-3/4" |

"Both free speech rights and property rights belong legally to individuals, but their real function is social, to benefit vast numbers of people who do not themselves exercise these rights."

—Thomas Sowell

PROUD DISTRIBUTOR OF  
**NABRICO**

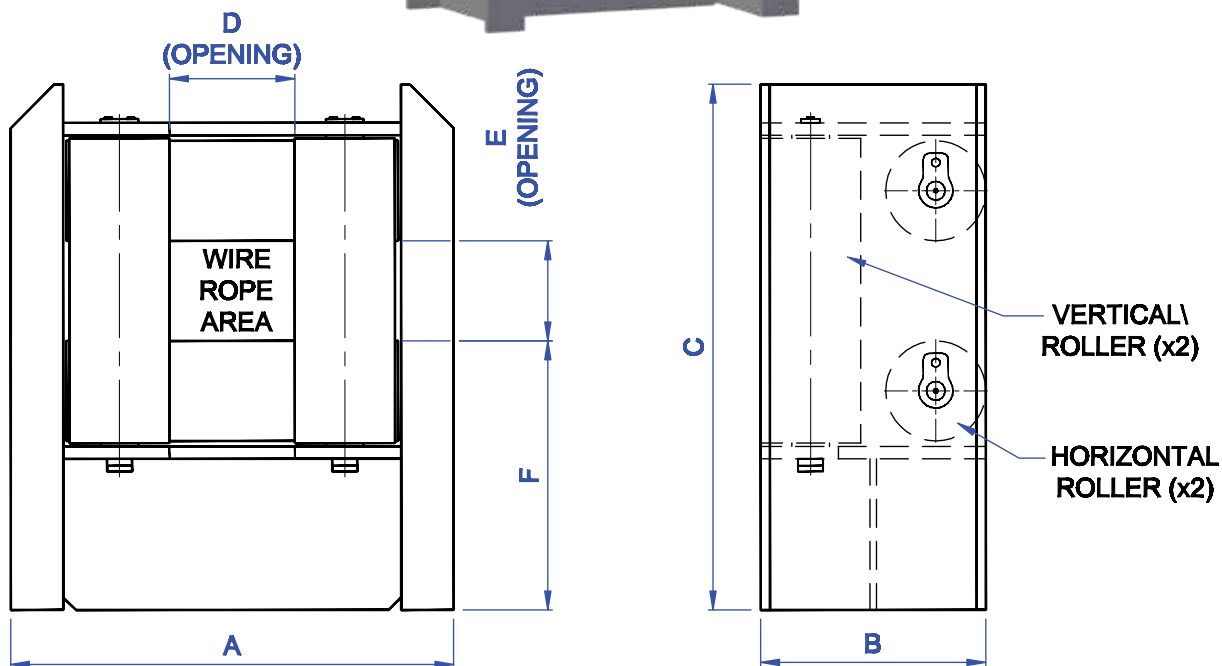
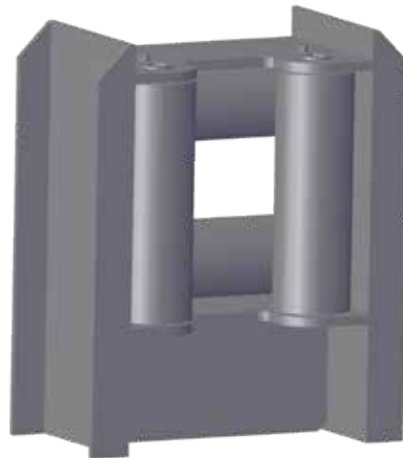
brtmarine.com 800-725-3787



The specifications and details described by drawings or text in this literature are subject to change without notice.



# FAIRLEAD ROLLER



| MODEL No. | PART No. | SIZE  | A       | B   | C   | D   | E   | F       | WT. (lbs.) |
|-----------|----------|-------|---------|-----|-----|-----|-----|---------|------------|
| DF-462    | 84644    | 10x8  | 35-3/8" | 18" | 42" | 10" | 8"  | 21-1/2" | 1850       |
| DF-462    | 84640    | 12x12 | 37"     | 18" | 46" | 12" | 12" | 21-1/2" | 1900       |

“The first lesson of economics is scarcity: there is never enough of anything to fully satisfy all those who want it. The first lesson of politics is to disregard the first lesson of economics.”

—Thomas Sowell



brtmarine.com 800-725-3787

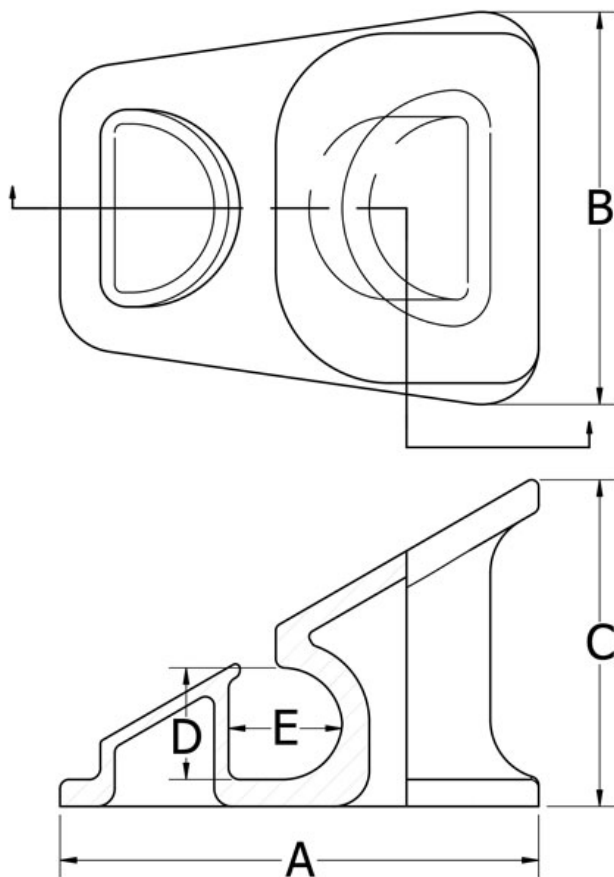
PROUD DISTRIBUTOR OF  
**NABRICO**

The specifications and details described by drawings or text in this literature are subject to change without notice.



# STAINLESS STEEL FIXED CHOCK

BR  
T



CHOCKS

| MODEL No. | PART No. | A       | B         | C       | D  | E      | WT. (lbs.) |
|-----------|----------|---------|-----------|---------|----|--------|------------|
| DF-460-3  | 89242    | 16-1/2" | 11-13/16" | 11-1/4" | 2" | 4-7/8" | 170        |

"Prices are important not because money is considered paramount but because prices are a fast and effective conveyor of information through a vast society in which fragmented knowledge must be coordinated."

—Thomas Sowell

PROUD DISTRIBUTOR OF  
**NABRICO**

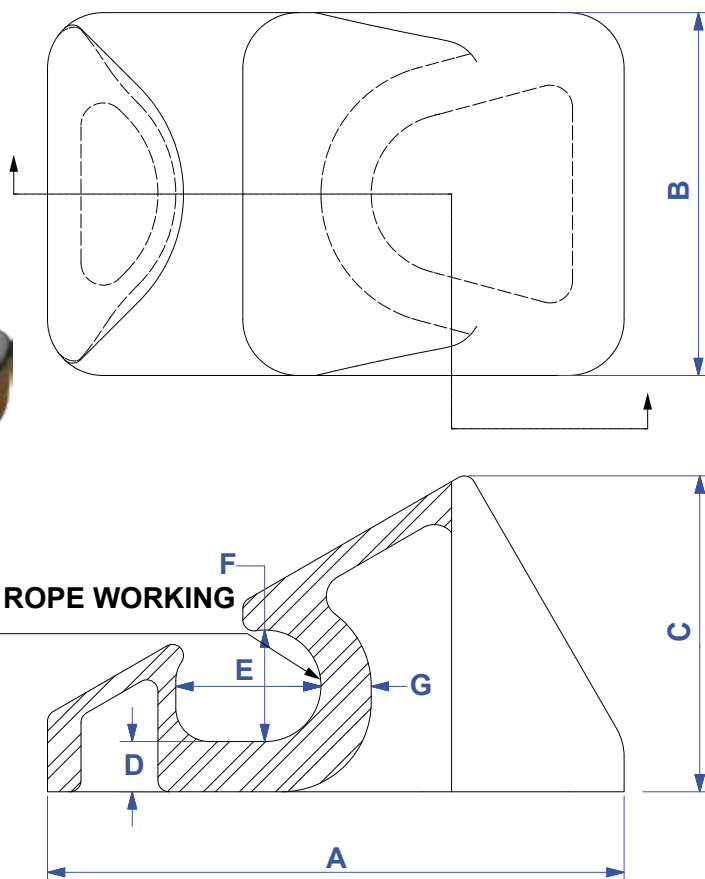
[brtmarine.com](http://brtmarine.com) 800-725-3787



*The specifications and details described by drawings or text in this literature are subject to change without notice.*



# STAINLESS STEEL FIXED CHOCK



| MODEL No. | PART No. | A        | B         | C       | D      | E      | F  | G      | SWL      | WT. (lbs.) |
|-----------|----------|----------|-----------|---------|--------|--------|----|--------|----------|------------|
| DF-460-10 | 89243    | 20-5/16" | 12-13/16" | 11-1/8" | 1-3/4" | 5-1/8" | 4" | 1-3/4" | 500 TONS | 256        |

"Imagine a political system so radical as to promise to move more of the poorest 20% of the population into the richest 20% than remain in the poorest bracket within the decade? You don't need to imagine it. It's called the United States of America."

—Thomas Sowell



brtmarine.com 800-725-3787

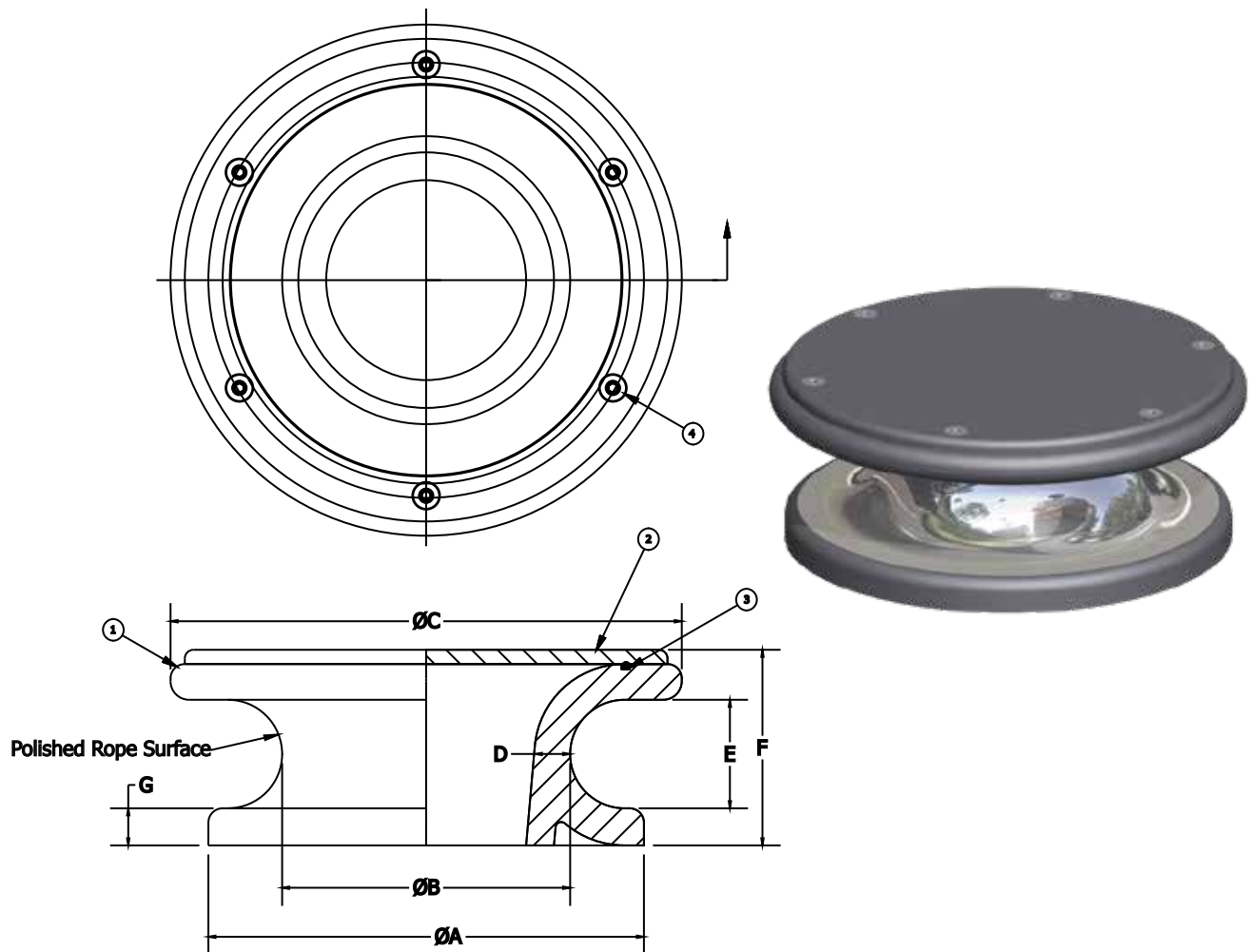
PROUD DISTRIBUTOR OF  
**NABRICO**

The specifications and details described by drawings or text in this literature are subject to change without notice.



# STAINLESS STEEL CHOCK

BR



| PIECE No. | DESCRIPTION                         | PART No. | MATERIAL            |
|-----------|-------------------------------------|----------|---------------------|
| 1         | BUTTON CHOCK BODY                   | 89232    | 304 STAINLESS STEEL |
| 2         | CHOCK COVER PLATE                   | 89233    | 304 STAINLESS STEEL |
| 3         | LID GASKET                          | 89234    | NEOPRENE            |
| 4         | 3/8 - 16 UNC FLAT HEAD SOCKET SCREW | 466      | 316 STAINLESS STEEL |

| MODEL No. | PART No. | SIZE | A   | B  | C       | D  | ØE | F      | ØG | WT. (lbs.) |
|-----------|----------|------|-----|----|---------|----|----|--------|----|------------|
| DF-565    | 89231    | 8"   | 12" | 8" | 14-1/6" | 1" | 3" | 5-3/8" | 1" | 99         |

"There are few things more dishonorable than misleading the young."

—Thomas Sowell

PROUD DISTRIBUTOR OF  
**NABRICO**

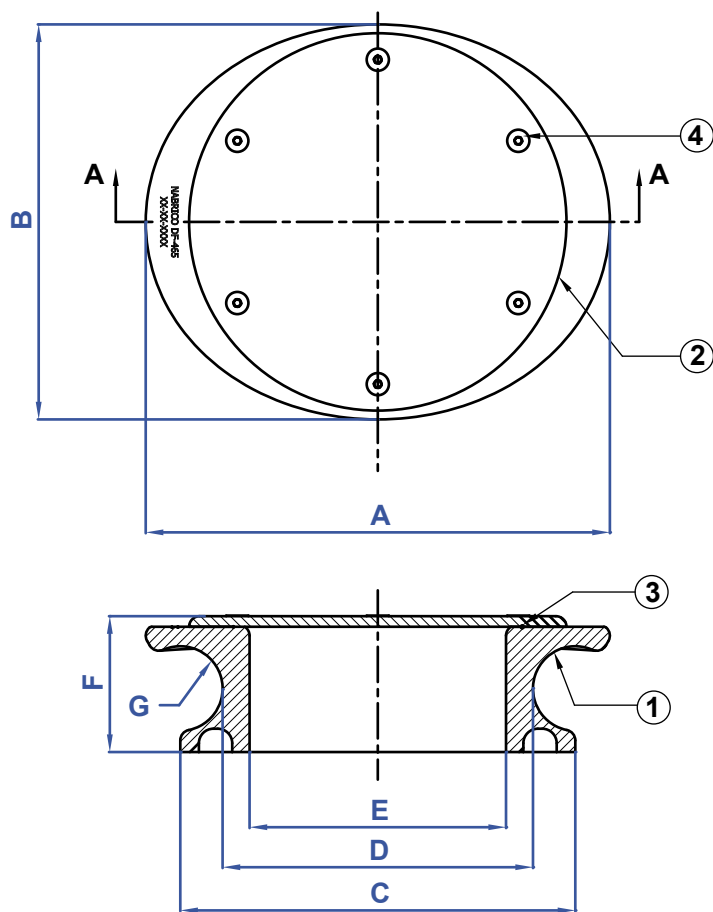
brtmarine.com 800-725-3787



The specifications and details described by drawings or text in this literature are subject to change without notice.



# STAINLESS STEEL BUTTON CHOCK



**SECTION A-A**

| PIECE No. | DESCRIPTION                         | PART No. | MATERIAL            |
|-----------|-------------------------------------|----------|---------------------|
| 1         | BUTTON CHOCK BODY                   | 89237    | 304 STAINLESS STEEL |
| 2         | CHOCK COVER PLATE                   | 89236    | 304 STAINLESS STEEL |
| 3         | GASKET                              | 89239    | NEOPRENE            |
| 4         | M10-1.5 x 25 FLAT SOCKET HEAD SCREW | 465      | 304 STAINLESS STEEL |

| MODEL No. | PART No. | A        | B   | ØC  | ØD  | ØE      | F        | G      | WT. (lbs.) |
|-----------|----------|----------|-----|-----|-----|---------|----------|--------|------------|
| DF-465-17 | 89238    | 16-7/16" | 14" | 14" | 11" | 9-3/32" | 4-13/16" | 1-1/2" | 108        |

"Liberalism is totalitarianism with a human face."

—Thomas Sowell



brtmarine.com 800-725-3787

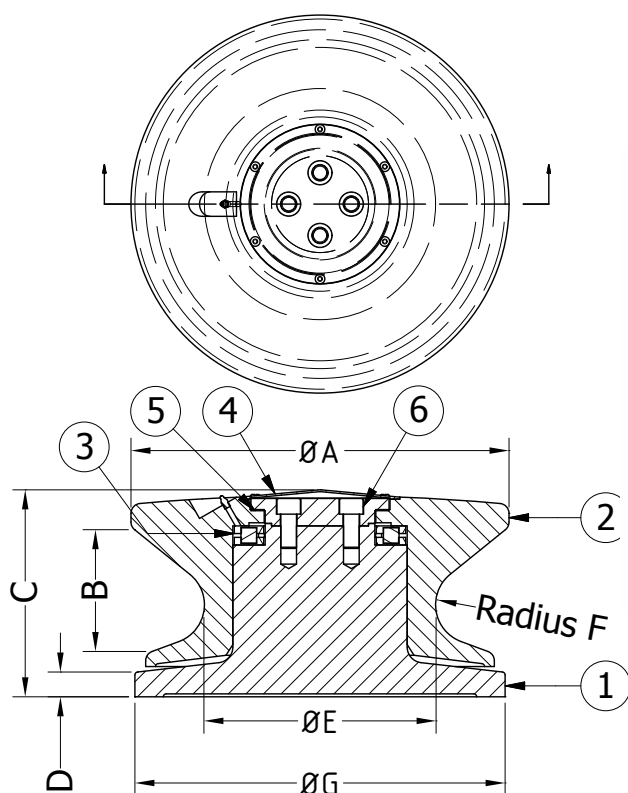
PROUD DISTRIBUTOR OF  
**NABRICO**

The specifications and details described by drawings or text in this literature are subject to change without notice.



# ROLLER CHOCK

BR



| PIECE No. | DESCRIPTION   | PART No. | MATERIAL        |
|-----------|---------------|----------|-----------------|
| 1         | ROLLER BASE   | 89200    | MILD STEEL      |
| 2         | ROLLER SHEAVE | 89202    | CAST IRON       |
| 3         | PLANE BEARING | 89204    | BEARING STEEL   |
| 4         | ROLLER COVER  | 89206    | STAINLESS STEEL |
| 5         | ROLLER CAP    | 89208    | STAINLESS STEEL |
| 6         | SOCKET SCREWS | 89210    | ALLOY STEEL     |

| MODEL No. | PART No. | A        | B      | C       | D  | ØE      | F       | ØG      | WT. (lbs.) |
|-----------|----------|----------|--------|---------|----|---------|---------|---------|------------|
| DF-100    | 89245    | 15-3/16" | 4-7/8" | 8-5/16" | 1" | 9-5/16" | 1-9/16" | 14-7/8" | 254        |

"The most fundamental fact about the ideas of the political left is that they do not work. Therefore we should not be surprised to find the left concentrated in institutions where ideas do not have to work in order to survive."

—Thomas Sowell

PROUD DISTRIBUTOR OF  
**NABRICO**

brtmarine.com 800-725-3787

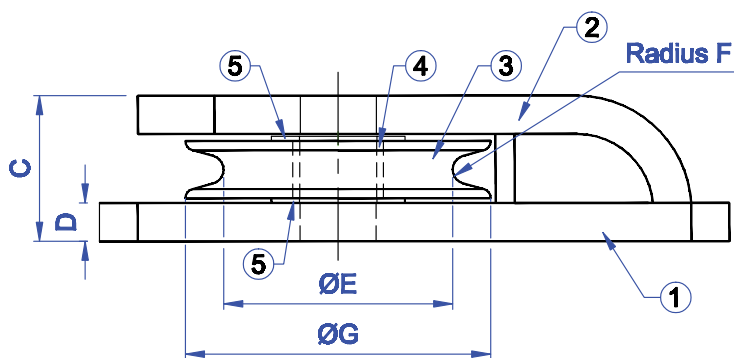
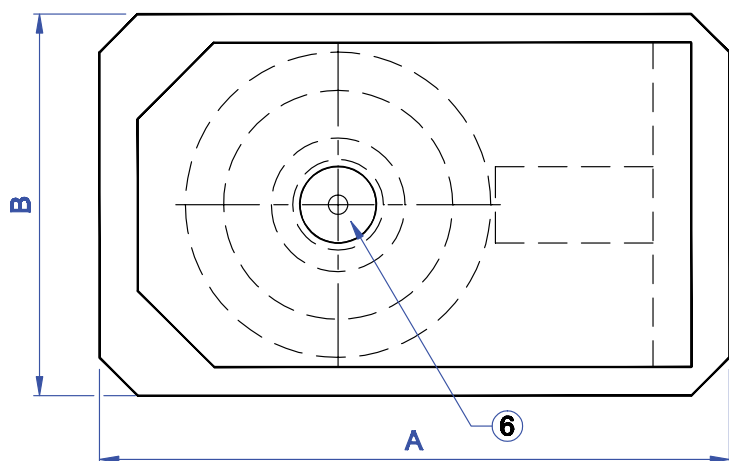


The specifications and details described by drawings or text in this literature are subject to change without notice.



BR

# SINGLE ROLLER CHOCK



| PIECE No. | DESCRIPTION        | PART No. | MATERIAL |
|-----------|--------------------|----------|----------|
| 1         | ROLLER BODY BOTTOM | 76988    | STEEL    |
| 2         | ROLLER BODY TOP    | 76996    | STEEL    |
| 3         | ROLLER SHEAVE      | 77003    | STEEL    |
| 4         | BUSHING            | 77410    | BRASS    |
| 5         | WASHER             | 77046    | BRASS    |
| 6         | ROLLER PIN         | 77038    | STEEL    |

| MODEL No. | PART No. | SIZE | A       | B   | C        | D  | ØE | F    | ØG | WT. (lbs.) |
|-----------|----------|------|---------|-----|----------|----|----|------|----|------------|
| DF-361    | 13862    | 8"   | 16-1/2" | 10" | 3-13/16" | 1" | 6" | 3/8" | 8" | 123        |

"Like a baseball game, wars are not over till they are over. Wars don't run on a clock like football. No previous generation was so hopelessly unrealistic that this had to be explained to them."

—Thomas Sowell



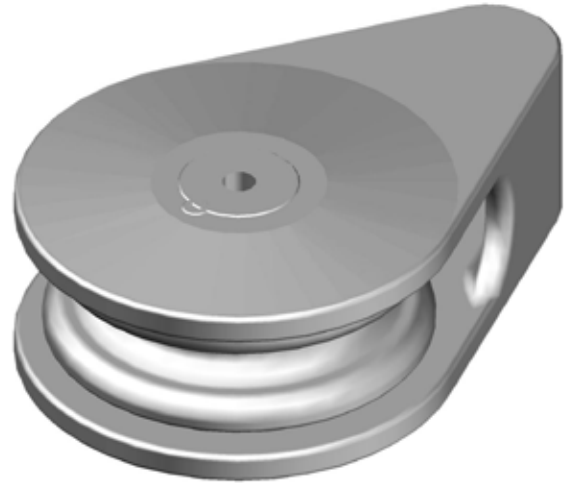
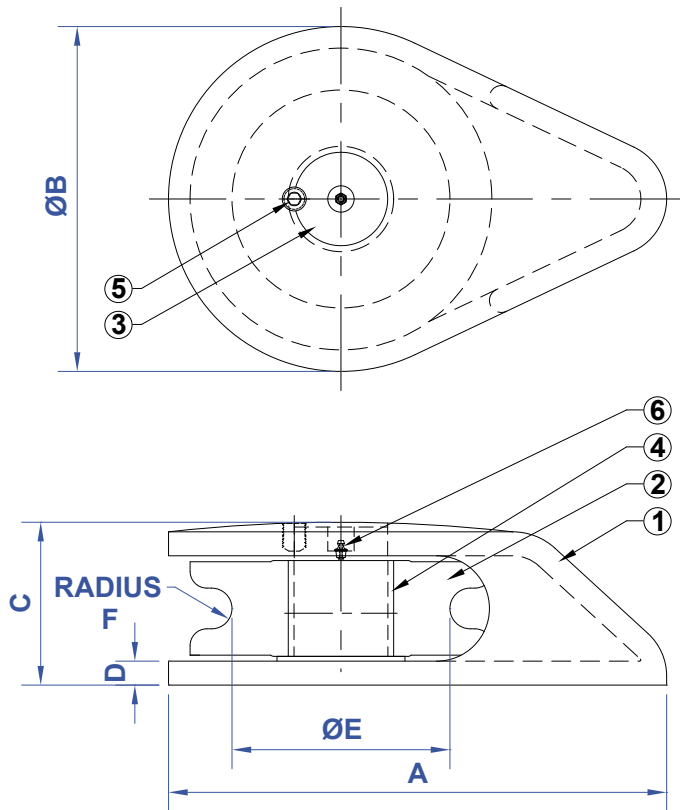
brtmarine.com 800-725-3787

PROUD DISTRIBUTOR OF  
**NABRICO**

The specifications and details described by drawings or text in this literature are subject to change without notice.



# SINGLE ROLLER CHOCK



| PIECE No. | DESCRIPTION      | QTY | PART No. | MATERIAL        |
|-----------|------------------|-----|----------|-----------------|
| 1         | HOUSING ASSEMBLY | 1   | 89273    | CAST STEEL      |
| 2         | ROLLER SHEAVE    | 1   | 89281    | CAST STEEL      |
| 3         | ROLLER PIN       | 1   | 89311    | STEEL           |
| 4         | BUSHING          | 1   | 89303    | BRONZE          |
| 5         | SET SCREW        | 1   | 70599    | STAINLESS STEEL |
| 6         | GREASE FITTING   | 1   | 100101   | STAINLESS STEEL |

| MODEL No. | PART No. | SIZE | A   | ØB | C      | D    | ØE       | F      | WT. (lbs.) |
|-----------|----------|------|-----|----|--------|------|----------|--------|------------|
| DF-927    | 89265    | 8"   | 13" | 9" | 4-1/4" | 5/8" | 5-11/16" | 17/32" | 55         |

1. BUSHING (89303) IS INCLUDED WITH ROLLER SHEAVE.

"Would you bet your paycheck on a weather forecast for tomorrow? If not, then why should this country bet billions on global warming predictions that have even less foundation?"

—Thomas Sowell

PROUD DISTRIBUTOR OF  
**NABRICO**

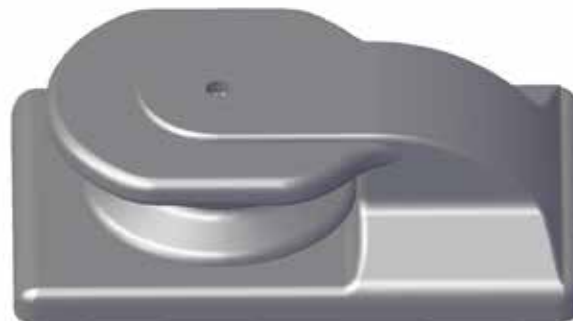
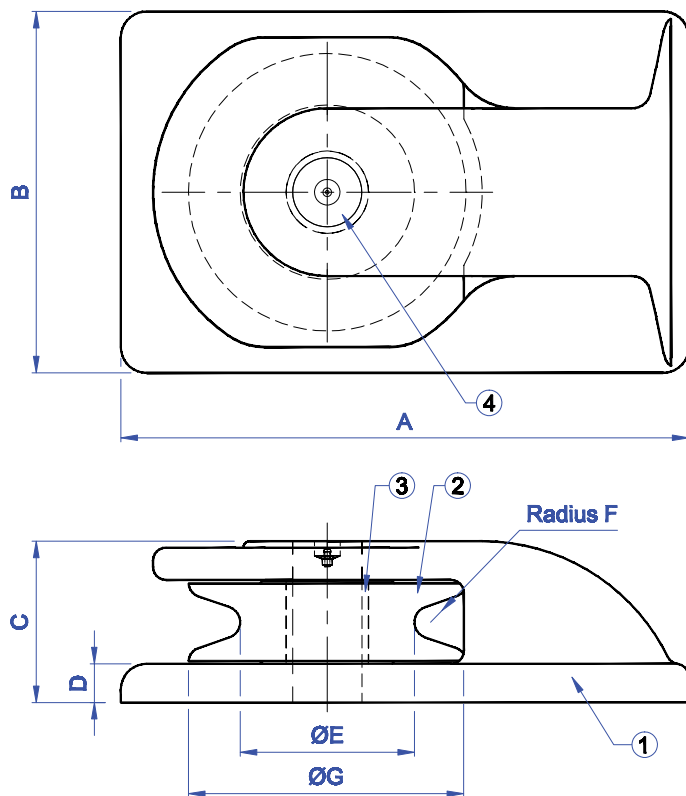
brtmarine.com 800-725-3787



The specifications and details described by drawings or text in this literature are subject to change without notice.



# SINGLE ROLLER CHOCK



| PIECE No. | DESCRIPTION   | PART No. | MATERIAL   |
|-----------|---------------|----------|------------|
| 1         | HOUSING       | 6467     | CAST STEEL |
| 2         | ROLLER SHEAVE | 6734     | CAST STEEL |
| 3         | BUSHING       | 6726     | BRONZE     |
| 4         | ROLLER PIN    | 76198    | STEEL      |

| MODEL No. | PART No. | SIZE | A   | B   | C      | D      | ØE     | F    | ØG      | WT. (lbs.) |
|-----------|----------|------|-----|-----|--------|--------|--------|------|---------|------------|
| DF-164    | 6475     | 11"  | 22" | 14" | 6-1/4" | 1-1/2" | 6-3/4" | 5/8" | 10-3/4" | 296        |

"Tariffs that save jobs in the steel industry mean higher steel prices, which in turn means fewer sales of American steel products around the world and losses of far more jobs than are saved."

—Thomas Sowell



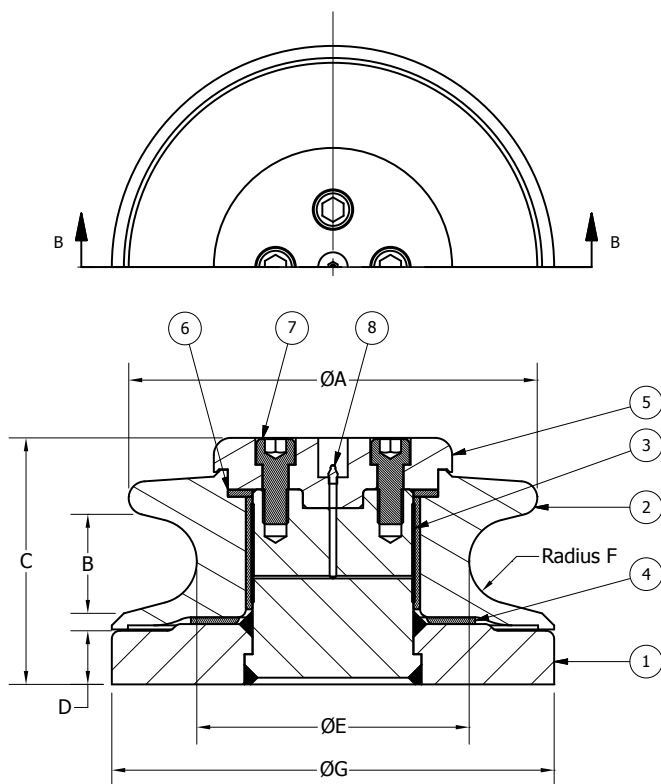
brtmarine.com 800-725-3787

PROUD DISTRIBUTOR OF  
**NABRICO**

The specifications and details described by drawings or text in this literature are subject to change without notice.



# SINGLE ROLLER BUTTON CHOCK



| PIECE No. | DESCRIPTION          | PART NUMBER |          | MATERIAL   |
|-----------|----------------------|-------------|----------|------------|
|           |                      | DF-512-5    | DF-511-5 |            |
| 1         | ROLLER BASE ASSEMBLY | 89194       |          | MILD STEEL |
| 2         | ROLLER SHEAVE        | 89192       | 89189    | CAST STEEL |
| 3         | BUSHING              | 89198       |          | BRONZE     |
| 4         | LOWER WASHER         | 89199       |          | BRONZE     |
| 5         | ROLLER CAP           | 89197       |          | STAINLESS  |
| 6         | UPPER WASHER         | 6913        |          | BRONZE     |
| 7         | CAP SCREW            | 413         |          | STAINLESS  |
| 8         | GREASE FITTING       | 100101      |          | STAINLESS  |

| MODEL No. | PART No. | SIZE | ØA  | B        | C      | D       | ØE | F      | ØG  | WT. (lbs.) |
|-----------|----------|------|-----|----------|--------|---------|----|--------|-----|------------|
| DF-512-5  | 89190    | 12"  | 12" | 2-15/16" | 7-1/4" | 1-9/16" | 8" | 1-1/4" | 13" | 171        |
| DF-511-5  | 89188    | 16"  | 16" | 2-15/16" | 7-1/4" | 1-9/16" | 8" | 1-1/4" | 13" | 197        |

"Talkers are usually more articulate than doers, since talk is their specialty."

—Thomas Sowell

PROUD DISTRIBUTOR OF  
**NABRICO**

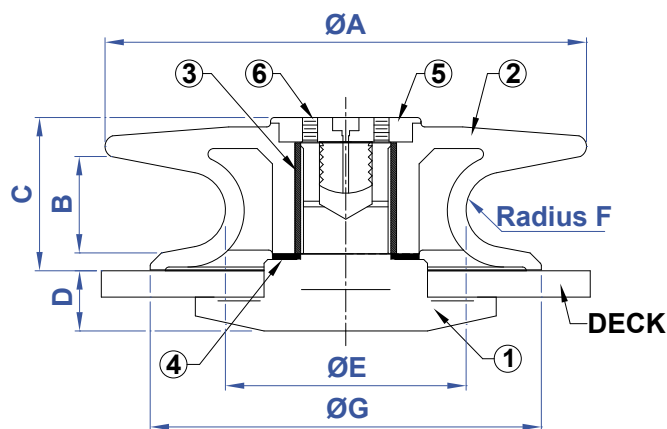
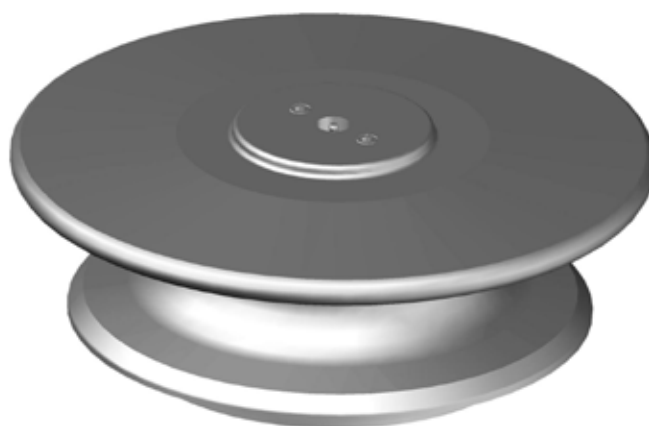
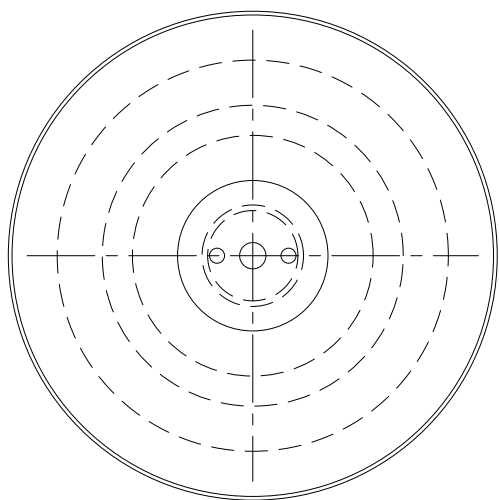
brtmarine.com 800-725-3787



The specifications and details described by drawings or text in this literature are subject to change without notice.



# THRU DECK SINGLE ROLLER BUTTON CHOCK



| PIECE No. | DESCRIPTION   | PART No. | MATERIAL   |
|-----------|---------------|----------|------------|
| 1         | ROLLER BASE   | 6971     | CAST STEEL |
| 2         | ROLLER SHEAVE | 6947     | CAST STEEL |
| 3         | BUSHING       | 6920     | BRONZE     |
| 4         | WASHER        | 6912     | BRASS      |
| 5         | ROLLER CAP    | 6939     | BRASS      |
| 6         | SET SCREW     | 74918    | STAINLESS  |

| MODEL No. | PART No. | SIZE | A   | B       | C       | D  | ØE | F      | ØG  | WT. (lbs.) |
|-----------|----------|------|-----|---------|---------|----|----|--------|-----|------------|
| DF-11     | 6998     | 16"  | 16" | 3-3/16" | 5-1/16" | 2" | 8" | 1-1/4" | 13" | 126        |

"Facts are not liberals' strong suit. Rhetoric is."

—Thomas Sowell



brtmarine.com 800-725-3787

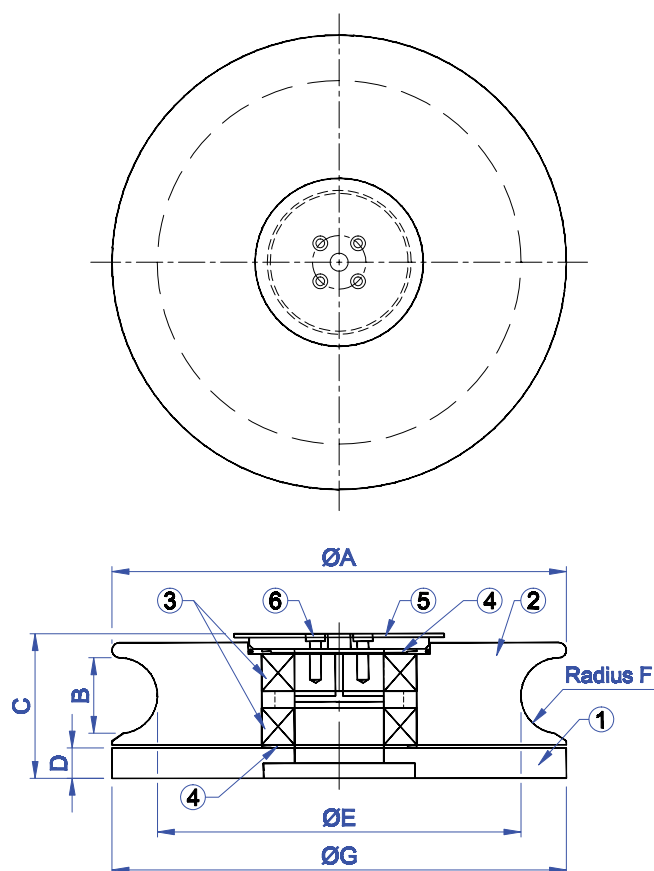
PROUD DISTRIBUTOR OF  
**NABRICO**

The specifications and details described by drawings or text in this literature are subject to change without notice.



# HEAVY DUTY SINGLE ROLLER BUTTON CHOCK

BR  
T



| PIECE No. | DESCRIPTION         | PART No. | MATERIAL  |
|-----------|---------------------|----------|-----------|
| 1         | ROLLER BASE         | 79026    | STEEL     |
| 2         | ROLLER SHEAVE       | 79027    | STEEL     |
| 3         | ROLLER BEARING (x2) | 79025    | STAINLESS |
| 4         | WASHER (x2)         | 79028    | STEEL     |
| 5         | ROLLER CAP          | 79029    | STEEL     |
| 6         | SCREW               | 79030    | STAINLESS |

| MODEL No. | PART No. | SIZE | ØA  | B      | C  | D  | ØE  | F      | ØG  | WT. (lbs.) |
|-----------|----------|------|-----|--------|----|----|-----|--------|-----|------------|
| DF-511HD  | 89250    | 15"  | 15" | 2-1/2" | 6" | 1" | 12" | 1-1/4" | 15" | 180        |

"The simplest and most psychologically satisfying explanation of any observed phenomenon is that it happened that way because someone wanted it to happen that way."

—Thomas Sowell

PROUD DISTRIBUTOR OF  
**NABRICO**

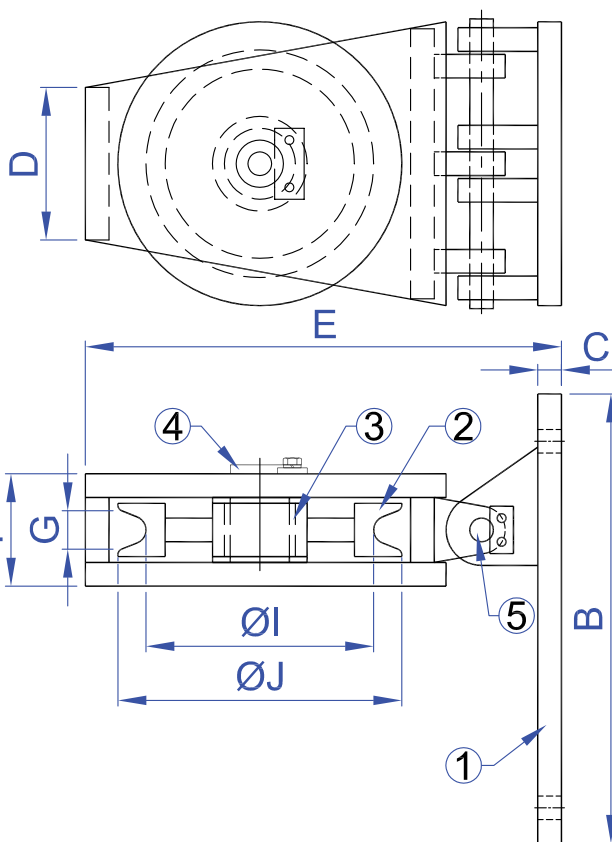
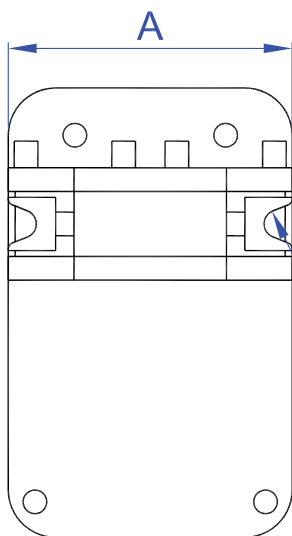
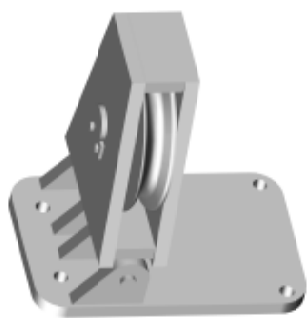
brtmarine.com 800-725-3787



The specifications and details described by drawings or text in this literature are subject to change without notice.



# PIVOTING ROLLER CHOCK



| PIECE No. | DESCRIPTION    | PART No. |        | MATERIAL  |
|-----------|----------------|----------|--------|-----------|
|           |                | DF-710   | DF-712 |           |
| 1         | MOUNTING PLATE | 6735     |        | STEEL     |
| 2         | ROLLER SHEAVE  | 6736     | 6738   | STAINLESS |
| 3         | BUSHING        | 6740     |        | BRONZE    |
| 4         | ROLLER PIN     | 6737     |        | STAINLESS |
| 5         | HINGE PIN      | 6739     |        | STAINLESS |

| MODEL No. | PART No. | SIZE | A   | B   | C  | D      | E       | F      | G      | H     | ØI     | J   | WT. (lbs.) |
|-----------|----------|------|-----|-----|----|--------|---------|--------|--------|-------|--------|-----|------------|
| DF-710    | 6478     | 10"  | 12" | 19" | 1" | 6-1/2" | 18-3/4" | 4-3/4" | 1-7/8" | 1/2"  | 7-1/2" | 10" | 210        |
| DF-712    | 6479     | 12"  | 12" | 19" | 1" | 6-1/2" | 20-1/4" | 4-3/4" | 2"     | 9/16" | 9-1/2" | 12" | 240        |

"The ball retriever is not long enough to get my putter out of the tree."

—Tom Weiskopf



brtmarine.com 800-725-3787

PROUD DISTRIBUTOR OF  
**NABRICO**

The specifications and details described by drawings or text in this literature are subject to change without notice.