

SERVING THE MARINE INDUSTRY SINCE 1947



OBERDORFER PRODUCT LINE

PUMP SELECTION CHARTS

BR

PUMP SELECTION CHART

BRONZE ROTARY GEAR PUMPS



Pump Models				Ports	DIFFERENTIAL	50 PSIG		100 PSIG		150 PSIG	
Pedestal	Close Coupled	Carbonator	NPT	Nominal Flow	Flow	Power	Flow	Power	Flow	Power	
				*GPM (lpm)	GPM	BHP	GPM	BHP	GPM	BHP	
	OBN999	OBN95	1/4	1 (3.8)	0.8	0.09	0.6	0.15	0.4	0.22	
OBN1000	OBN991	OBN91, OBN61K, OBN91K	1/4, 3/8	2 (7.6)	1.8	0.17	1.5	0.28	1.2	0.39	
OBN2000	OBN992	OBN9206	1/4, 3/8	4 (15.1)	3.5	0.25	3	0.43	2.5	0.68	
OBN3000	OBN993		1/2	8 (30.3)	6.6	0.73	6	1.1	5.5	1.4	
OBN4000	OBN994		1/2	10 (37.9)	10	1.1	9.4	1.8	9	2.3	
OBN7000	OBN970		3/4	20 (75.7)	18.9	1.6	18	2.7	17.4	3.6	
OBN9000	OBN990		1	23 (87.1)	22.3	1.7	21.3	2.7	20.1	3.7	
OBN9000(R)SX			1 1/4	27 (102.2)	26	2	25.5	3.2	25	4.4	
	OBN1100		1 1/4	40 (151.4)	35	2	30	3.5	25	5	
OBN11500, OBN11HD			1 1/4	60 (227.1)	56	4	51	6	Intermittent Operation Above 900 RPM		
	OBN1300		1 1/2	60 (227.1)	55	3.5	52	5.5			
OBN13500, OBN13HD			1 1/2	85 (321.8)	84	6.4	81	9.4			
OBN26HD			2	170 (643.5)	169	13	163	19			

*Performance is based on 1725 RPM, Water @ 1 cPs, 68° F (20° C)

Viscosity vs. RPM Limitations					Horsepower Multiplier based on Viscosity					
Liquid @ 70°F	C.P.	C.S.	S.S.U.	RPM	2 PSI	20 PSI	40 PSI	60 PSI	80 PSI	100 PSI
Water	1	1	5	1750	1	1	1	1	1	1
	9	11	50	1750	1	1.05	1	1	1	1
No. 2 Fuel Oil @ 57°F lowest 1800 RPM option	17	22	100	1700	1.1	1.1	1.05	1.05	1	1
	43	54	250	1600	1.2	1.15	1.1	1.1	1.05	1.05
SAE 10 Oil @ 62°F	86	108	500	1500	1.3	1.25	1.2	1.15	1.1	1.1
	130	162	750	1400	1.45	1.35	1.25	1.2	1.15	1.15
SAE 30 Oil @ 72°F lowest 1200 RPM option	173	216	1000	1300	1.6	1.5	1.4	1.3	1.25	1.2
	432	540	2500	1200	1.9	1.75	1.6	1.45	1.35	1.3
SAE 60 Oil @ 70°F	864	1080	5000	1000	2.2	2	1.8	1.6	1.5	1.4
	1296	1620	7500	850	2.6	2.3	2	1.8	1.7	1.6
SAE 70 Oil @ 60°F	1728	2160	10000	600	3	2.6	2.2	2	1.9	1.8
	4320	5400	25000	500	3.5	3	2.7	2.4	2.2	2
No. 6 Fuel Oil @ 70°F	8640	10800	50000	400	4	3.6	3.2	2.8	2.5	2.2
	12960	16200	75000	300	4.5	4.1	3.6	3.15	2.75	2.35

YOUR SOURCE FOR



OBERDORFER

brtmarine.com

800-725-3787



PUMP SELECTION CHART

CENTRIFUGAL PUMPS



Standard End Suction			Ports	Max Capacity	Max Head		Max Speed
Pedestal	Close Coupled	Mat'l of Construction	Size-Inches	GPM (lpm)	Feet	mH	RPM
OB50P		Bronze	3/8	9 (34)	35	5	4,000
OB60P		Bronze	3/4 x 1/2	25 (94)	68	21	4,000
OB70P		Bronze	1 1/4 x 1	110 (416)	92	28	4,000
OB81PB		Bronze	1 1/2 x 1 1/4	95 (360)	100	20	3,450
OB82PB		Bronze	1 1/2 x 1 1/4	100 (378)	115	35	3,450
OB83PB		Bronze	1 1/2 x 1 1/4	100 (378)	130	40	3,450
	OB101M	Bronze	3/8	9 (34)	25	8	3,450
	OB104M	Bronze	3/4 x 1/2	24 (91)	53	16	3,450
	OB107MB, MA	Bronze	1 1/4 x 1	35 (132)	50	15	3,450
	OB109MB	Bronze	1 1/4 x 1	75 (284)	45	13	3,450
OB119MP		Bronze	1 1/4 x 1	110 (416)	90	27	4,000
	OB170M	Bronze	3/4	12 (45)	17	5	3,450
	OB172B	Bronze	3/4	12 (45)	17	5	3,450
	OB500	Bronze	3/8	9 (34)	28	4	3,450
	OB600	Bronze	3/4 x 1/2	24 (91)	53	16	3,450
	OB700	Bronze	1 1/4 x 1	95 (360)	70	21	3,450
OB800B		Bronze	1 1/4 x 1	70 (26)	200	61	4,000
	OB815B	Bronze	1 1/2 x 1 1/4	100 (378)	95	29	3,450
OB815PB		Bronze	1 1/2 x 1 1/4	100 (378)	95	29	3,450
	OB820B	Bronze	1 1/2 x 1 1/4	100 (378)	120	36	3,450
	OB830B	Bronze	1 1/2 x 1 1/4	100 (378)	140	43	3,450

Self Priming			Ports	Max Capacity	Max Head		Max Speed	Max Lift
Pedestal	Close Coupled	Mat'l of Construction	Size-Inches	GPM (lpm)	Feet	mH	RPM	Feet
OB30PB	OB300B	Bronze	1	24 (91)	35	5	3,800	22
OB75PB	OB750B	Bronze	1 1/2	90 (340)	82	25	3,450	20

“God cannot give us happiness and peace apart from Himself, because it is not there. There is no such thing.”

—C. S. Lewis



brtmarine.com

800-725-3787

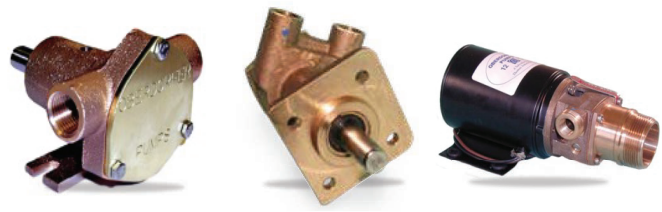


YOUR SOURCE FOR
OBERDORFER

PUMP SELECTION CHART

FLEXIBLE IMPELLER PUMPS

Model	Ports	Max Capacity	Max Head		Max Speed
Pedestal	Size-Inches	GPM (lpm)	Feet	PSIG	RPM
OBN200M	3/8	5 (19)	49	21	3,000
OB301M	3/4	21 (79)	81	35	3,450
OB401M	1	36 (136)	92	40	3,000
OB501M	1 1/4	58 (219)	104	45	1,750



Model	Ports	Max Capacity	Max Head		Max Speed	Mounting			
Flange	Size-Inches	GPM (lpm)	Feet	PSIG	RPM	Flange	Cam	Shaft	Pilot
OB402M	1 1/4 Hose	36 (136)	80	35	3,000	Pulley			
OBN202M-908, OB837	1/2	12 (45)	58	25	3,500	Clamped			Male
OBN202M	1/2	12 (45)	58	25	3,500	2 bolt	Full	Slot	None
OBN202M-03	3/8	9 (34)	58	25	3,500	2 bolt	Half	Slot	None
OBN202M-07	3/8	12 (45)	58	25	3,500	2 bolt	Full	Slot	None
OBN202M-11	1 Hose	12 (45)	58	25	3,500	4 bolt	Full	Tang	Male
OBN202M-15	3/8	12 (45)	58	25	3,500	5 bolt	Full	Tang	Male
OBN202M-16	1/2	12 (45)	58	25	3,500	5 bolt	Full	Tang	Male
OBN202M-17	3/4 x 5/8	12 (45)	58	25	3,500	3 bolt	Full	Tang	Male
OBN202M-17P	3/4 x 5/8	12 (45)	58	25	3,500	2 bolt	Full	Tang	Male
OBN202M-21	1/2	12 (45)	58	25	3,500	4 bolt	Full	Round	Male
OBN202M-23	1/2	12 (45)	58	25	3,500	2 bolt	Full	Tang	Male
OBN202M-24	1/2	12 (45)	58	25	3,500	3 bolt	Full	Tang	Male

Model	Ports	Max Capacity	Max Head		Max Speed
Close-Coupled	Size-Inches	GPM (lpm)	Feet	PSIG	RPM
OB209M	1 1/2 x 3/8	9 (34)	28	12	2,600
OB214M	1 1/2 x 3/8	13 (49)	69	30	3,450
OBN305M	3/4	13 (49)	80	35	1,200
OB405M-04	1	25 (94)	99	43	1,725
OB406M-04	1 1/2 x 1	25 (94)	99	43	1,725

“Satan, the leader or dictator of devils, is the opposite, not of God, but of Michael.”

—C. S. Lewis



YOUR SOURCE FOR

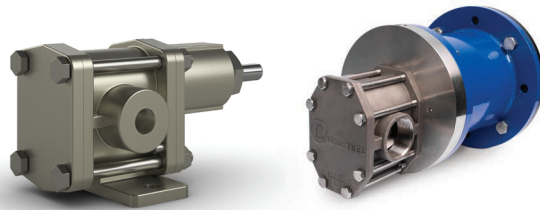


OBERDORFER

brtmarine.com

800-725-3787

CHEMSTEEL® PUMP SELECTION GUIDE



SEAL-LESS MAG DRIVE		SEALED		FLOW	MAX FLOW	PORT
CODE	*METAL	CODE	*METAL	RATE CODE	0 PSI GPM @ 1725 RPM	SIZE FNPT
RM1	×	R1	×	02	0.5	1/4"
	×		×	03	1.5	1/4"
	×		×	04	2	1/2"
	×		×	06	3	1/2"
SM2	×	S2	×	07	4	1/2"
	×		×	10	5.6	1/2"
	×		×	14	8	1/2"
SM4	×	S4	×	17	10	3/4"
SM9	×	S9	×	23	15	1-1/2"
	×		×	30	20	1-1/2"
	×		×	35	23	1-1/2"
	×		×	46	30	1-1/2"

*316 SST or Alloy C Material option

CHEMSTEEL PUMP SELECTION

- ▶ Select the MAX FLOW required
- ▶ Determine whether you will need a SEAL-LESS Mag Drive or SEALED Pump....notate code
- ▶ Select FLOW Rate Code
- ▶ e.g. 2 GPM with a SEALED Pump CODE of R1 would have a FLOW Rate Code of 04....
Base Model: R104
- ▶ e.g. 20 GPM with a SEAL-LESS Mag Drive Pump CODE of SM9 would have a
FLOW Rate Code of 30.... Base Model: SM930

This Selection will give you the Specification document for further discussion.

“Failures, repeated failures, are finger posts on the road to achievement.
One fails forward toward success.”

—C. S. Lewis



brtmarine.com

800-725-3787



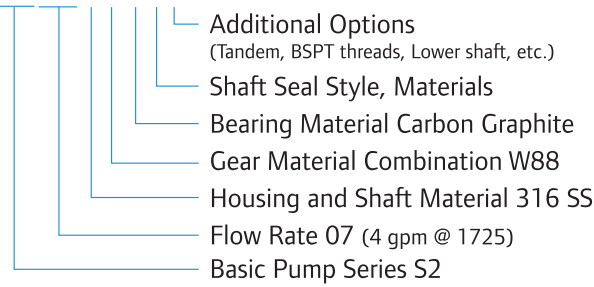
YOUR SOURCE FOR

OBERDORFER

CHEMSTEEL® NUMBERING SYSTEM

Example

S20716CCB



1. Basic Pump Series

SEAL-LESS MAG-DRIVE		SEALED		Flow Rate Code	Max Flow (0 psi) GPM @ 1725 RPM
Code	Metal	Code			
RM1	X	R1		02	.5
	X			03	1.5
	X			04	2
	X			06	3
SM2	X	S2		07	4
	X			10	5.6
	X			14	8
SM4	X	S4		17	10
SM9	X	S9		23	15
	X			30	20
	X			35	23
	X			46	30

2. Housing and Shaft Material

CODE	HOUSING MATERIAL	SHAFT MATERIAL
1	316 Stainless Steel	316 Stainless Steel
3	Alloy C	Alloy C

Teflon® is a registered trademark of DuPont, an equivalent fluoropolymer may be used
Ryton® is a registered trademark of Chevron Phillips Chemical, an equivalent polyphenylene sulfide may be used
PEEK® is a registered trademark of Victrex, an equivalent polyetheretherketone may be used
Grafoil® is a registered trademark of UCAR Carbon Technology, an equivalent may be used
Viton® is a registered trademark of DuPont Dow Elastomers, an equivalent fluoroelastomer may be used
Kalrez® is a registered trademark of DuPont Dow Elastomers, an equivalent perfluoroelastomer may be used
Rulon® is a registered trademark of Saint-Gobain, an equivalent compounded PTFE based material may be used

3. Gear Material Combination

CODE	DRIVE	IDLE
1	RYTON®	RYTON®
2	316 SS	PEEK®
3	PEEK®	PEEK®
4	Alloy C	Alloy C
5	Alloy C	Teflon®
6	W88	W88
7	Teflon®	Teflon®
8	W88	Teflon®
9	Alloy C	PEEK®
A	Alloy C	RYTON®
B	316 Stainless Steel	RYTON®
C	W88	RYTON®
D	W88	316 Stainless Steel
E	316 Stainless Steel	316 Stainless Steel
F	316 Stainless Steel	Teflon®
H	W88	PEEK®

4. Bearing Material

CODE	MATERIAL
C	Carbon Graphite Resin
P	Teflon®
J	Rulon®

5. Shaft Seal

CODE	STYLE			MATERIAL			
				Rotary Head		Stationary Head	
	Design	Seals	Case	Face	Elastomer	Face	O-Ring
B	Bellows	Single	316	Carbon	Viton®	Ceramic	Viton®
J	Bellows	Single	316	Silicon Carbide	EPDM	Silicon Carbide	EPDM
H	Bellows	Double	316	Teflon®	Viton®	Ceramic	Viton®
Z	Bellows	Single	316	Silicon Carbide	Viton®	Silicon Carbide	Viton®
A	Wedge	Single	316	Carbon	Teflon®	Ceramic	Kalrez®
C	Wedge	Single	316	Carbon	Teflon®	Silicon Carbide	Kalrez®
D	Wedge	Single	Alloy C	Carbon	Teflon®	Ceramic	Kalrez®
F	Wedge	Single	Alloy C	Carbon	Teflon®	Silicon Carbide	Kalrez®
V	Wedge	Single	Alloy C	Silicon Carbide	Teflon®	Silicon Carbide	Kalrez®
G	Wedge	Double	316	Carbon	Teflon®	Silicon Carbide	Kalrez®
L	Two Lips Seals		304	Viton® Backed By Teflon®			
W	Mag-Coupled			Samarium Cobalt			

6. Additional Options

CODE	OPTION
C1 through C7	Factory Installed Options
T1 through T13	Non-Metallic Gear • Temperature Trim
B	Bearing Flush Ports
E	BSPT Threads
XX	Specials - Consult Factory
M1 -M7	Factory Installed Close Coupled Adapter - Mag-Coupled

YOUR SOURCE FOR



OBERDORFER

brtmarine.com

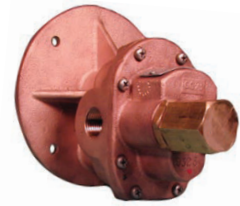
800-725-3787



BRONZE GEAR PUMP MODELING SYSTEM

CLOSE COUPLED – Part Number Code

Example: OBN991R5Q-T97, OBN992-01, OBN999Q-F50



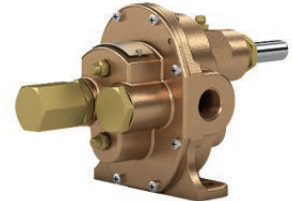
OBN991R00S5Q-T97

MANDATORY PREFIX	INDICATES BRONZE GEAR PUMP*	MODEL (FLOW)	OPTIONS**	OTHER	SEAL**	MOTOR ADAPTER CODE	MOTOR CODE
OB	N	991 (2 GPM) 992 (4 GPM) 993 (8 GPM) 994 (10 GPM) 970 (20 GPM) 990 (23 GPM) 999 (1 GPM)	R RELIEF VALVE E EXPORT THREAD (BSPT)	01 ONE SIZE LARGER PORTS 02 ONLY WITH "R", OPPOSITE RELIEF	— (BLANK) BUNA LIP S5 VITON LIP S8 PTFE WEDGE S15 HIGH PRESSURE VITON LIP SEAL S16 MECH. SEAL, BUNA S17 MECH. SEAL, VITON S18 MECH. SEAL, TEFLON	J, Q, N, M, K, H, C RELATES TO MOTOR FRAME SIZE SEE DATA SHEET FOR PROPER ADAPTER SELECTION TO MOTOR FRAME SIZE	- LETTER/NUMBER/ NUMBER

**LEAVE BLANK AND MOVE ON IF NO OPTIONS

PEDESTAL – Part Number Code

Example: OBN3000LRS15-01, OBN2000RS17-02, OBN1000RS17



OBN1000LRES3-01

MANDATORY PREFIX	INDICATES BRONZE GEAR PUMP*	MODEL (FLOW)	NOT NORMALLY USED	GEAR MATERIAL	OPTIONS	SEAL	OTHER
OB	N	1 (2 GPM) 2 (4 GPM) 3 (8 GPM) 4 (10 GPM) 7 (20 GPM) 9 (23 GPM) 11 (40 GPM) 13 (60 GPM) 26 (170 GPM)		00 STANDARD BOTH BRONZE 11 BOTH RYTON GEARS* 22 RYTON IDLE GEAR* *RYTON GEARS AVAILABLE ON MODELS 1,2,4 ONLY!	L LUBRICATED (BRONZE BEARINGS) R RELIEF VALVE E EXPORT THREAD (BSPT) P PEEK BEARING	— (BLANK) PTFE PACKING S3 BUNA LIP S5 VITON LIP S8 PTFE WEDGE S15 HIGH PRESSURE VITON LIP SEAL S16 MECH. SEAL, BUNA S17 MECH. SEAL, VITON S18 MECH. SEAL, TEFLON	-01 ONE SIZE LARGER PORTS -02 ONLY WITH "R", OPPOSITE RELIEF



brtmarine.com

800-725-3787



YOUR SOURCE FOR

OBERDORFER



Ampco Pumps Company

BPE
BILLY PUGH CO., INC.

COSPOLICH

Aerovent

CEN-TEX MARINE

CAL-JUNE

AdvanTec

BOEHL
AIR HORNS

FORTRESS
MARINE EQUIPMENT

CROWN
by Crane Pumps & Systems, Inc.

THE GARLISE & FINCH CO.

CRANE
PUMPS & SYSTEMS

CHAMPION

cincinnati fan

CWC Continental Western Corporation
INDUSTRY AT WORK

CONNELL-CARR
MARINE EQUIPMENT

DEMING
by Crane Pumps & Systems, Inc.

Franklin Electric

burks
by Crane Pumps & Systems, Inc.

FREEMAN
MARINE EQUIPMENT

DOMETIC

BARNES
by CRANE PUMPS & SYSTEMS

dsg Diamond Sea Glaze

HYUNDAI
HEAVY INDUSTRIES CO., LTD.

DATREX
Life Saving Products



Gardner Denver

Emerald Marine PRODUCTS

CHELSEA CLOCK

J.M.

GRUNDFOS

FERNSTRUM
R.W. Fernstrum & Company

Hartzell

DURAMAX MARINE

GISWOLD

JEAMAR WINCHES

HAGHT PUMP
DIVISION OF BAKER MANUFACTURING COMPANY, LLC.

imtra CORPORATION

Hydrasearch

GLAMOX

H2O

Kahlenberg
KAHLENBERG INDUSTRIES, INC.

The Humphrey
TYPE II MARINE SANITATION DEVICES

IR Ingersoll Rand

MAXIM WATERMAKERS

NABRICO

Mueller Steam Specialty

PERKO

OBERDORFER
by Gardner Denver

PACKLESS SEALING SYSTEM
SHAFT SEAL

MP PUMPS
by Gardner Denver

Morse Rubber

POTTER ROEMER
FIRE PRO.

REVERE
SURVIVAL INC.

PROSSER
by Crane Pumps & Systems, Inc.

RICE
PROPULSION

RITCHIE
NAVIGATION

McDERMOTT LIGHT & SIGNAL

MANCHESTER TANK

SKOOKUM
Guaranteed Tough Since 1890

RICE NOZZLES
QUALITY IN MOTION



SPREAD-ALL MFG. CO.

VIKING PUMP

SEA HORSE
MANUFACTURING

SLM SUPERIOR LIDGERWOOD MUNDY

VICAN PUMP

SONIHULL
ULTRASONIC ANTI-FOULING SYSTEM

THETFORD

VITRO
SEATING PRODUCTS

WORLDWIDE
Electric Corp

Sea Recovery

Weems & Plath
INNOVATION ROOTED IN TRADITION

Wyane Enterprises, Inc.

Thern Winches & Cranes

WAGER COMPANY

WEINMAN

Wintech
WINCHES & FAIRLEADS



1172 Camp Street, New Orleans, LA 70130

800-725-3787 | 504-525-7137

www.BRTMarine.com