

SERVING THE MARINE INDUSTRY SINCE 1947

WABER
1704
150 LBS

PMP



WAGER
COMPANY

WAGER COMPANY PRODUCT LINE

134 DECK DRAIN

Wager's standard deck drain is our 134 model. Available in either steel or aluminum, these drains are cast to our specifications, and are either galvanized or anodized for added protection against the harsh sea environment. Each drain has a removeable strainer plate secured by three stainless steel flat head screws. All of our strainer plates are also cast to allow for extra thickness and strength on deck. All deck drains are available upon request with a highly polished strainer plate for the yachting industry..



SPECIFICATIONS

GALVANIZED STEEL

CONNECTIONS:

- THREADED
- BUTTWELD
- FLANGED
- SOCKETWELD

SIZES:

- 1.5", 2", 2.5", 3", 4", 6"

316 STAINLESS STEEL

CONNECTIONS:

- THREADED
- BUTTWELD
- FLANGED
- SOCKETWELD

SIZES:

- 1.5", 2", 2.5", 3", 4", 6"

835 ALUMINUM

CONNECTIONS:

- THREADED
- BUTTWELD
- FLANGED
- SOCKETWELD

SIZES:

- 1.5", 2"

ANODIZED ALUMINUM

CONNECTIONS:

- THREADED
- BUTTWELD
- FLANGED
- SOCKETWELD

SIZES:

- 1.5", 2", 3"

Standard strainer is 3/8" thick Bronze. Also available in 3/16", or 3/8" thick Stainless Steel and 3/8" thick Aluminum.

"The most terrifying words in the English language are:
I'm from the government and I'm here to help."

—Ronald Reagan

136 DECK DRAIN

Wager's standard deck drain is our 136 model. Available in either steel or aluminum, these drains are cast to our specifications, and are either galvanized or anodized for added protection against the harsh sea environment. Each drain has a removeable strainer plate secured by three stainless steel flat head screws. All of our strainer plates are also cast to allow for extra thickness and strength on deck. All deck drains are available upon request with a highly polished strainer plate for the yachting industry.



The 136 series is a 2:1 ratio deck drain to allow for additional drainage. Cast in galvanized steel, it has a heavy-duty cast bronze strainer plate for added strength on deck.

SPECIFICATIONS

GALVANIZED STEEL

CONNECTIONS:

- THREADED
- BUTTWELD
- FLANGED
- SOCKETWELD

SIZES:

- 1.5", 2", 2.5", 3", 4", 6"

316 STAINLESS STEEL

CONNECTIONS:

- THREADED
- BUTTWELD
- FLANGED
- SOCKETWELD

SIZES:

- 1.5", 2", 2.5", 3", 4", 6"

835 ALUMINUM

CONNECTIONS:

- THREADED
- BUTTWELD
- FLANGED
- SOCKETWELD

SIZES:

- 1.5", 2"

ANODIZED ALUMINUM

CONNECTIONS:

- THREADED
- BUTTWELD
- FLANGED
- SOCKETWELD

SIZES:

- 1.5", 2", 3"

90/10 COPPER NICKEL (SPECIAL ORDER ONLY)

CONNECTIONS:

- SOCKETWELD

SIZES:

- 1.5", 2"

Standard strainer is 3/8" thick Bronze. Also available in 3/16", or 3/8" thick Stainless Steel and 3/8" thick Aluminum.

"Of the four wars in my lifetime, none came about because the U.S. was too strong."

—Ronald Reagan



brtmarine.com

800-725-3787



134 FLANGED HEAVY WALL DECK DRAIN

Cast in aluminum, with a heavy duty aluminum strainer plate that is secured with stainless steel flat head screws. A trap and baffle allow for drainage, while preventing sewer gas from escaping into the atmosphere. Available in galvanized steel with a bronze strainer plate.



SPECIFICATIONS

GALVANIZED STEEL

CONNECTIONS:

- FLANGED

SIZES:

- 1.5", 2", 2.5", 3"

ANODIZED ALUMINUM

CONNECTIONS:

- FLANGED

SIZES:

- 1.5", 2", 2.5", 3"

"I have wondered at times about what the Ten Commandments would have looked like if Moses had run them through the U.S. Congress."

—Ronald Reagan

1500 VENT CHECK VALVE

Wager's model 1500 vent check valve is mounted vertically on the deck of a ship. In the open position, the valve allows for required ventilation. During heavy seas, our disc style float rises to a neoprene seat, and prevents water and debris from entering tanks and bulkheads. A 30 x 30 or 1/4" x 1/4" mesh stainless steel screen provides protection from deck fires. It is available in galvanized steel, and stainless steel. Special request are needed for aluminum and bronze. Sizes 1.5"-12" threaded, welded, flanged and metric flange.



SPECIFICATIONS

GALVANIZED STEEL

CONNECTIONS:

- THREADED (1.5" - 6" ONLY)
- BUTTWELD (1.5" - 6" ONLY)
- FLANGED (METRIC AVAILABLE)
- VICTAULIC GROOVE COUPLING

SIZES:

- 1.5", 2", 2.5", 3", 4", 5", 6", 8", 10", 12", 14", 16"

304 STAINLESS STEEL

CONNECTIONS:

- THREADED (1.5" - 6" ONLY)
- BUTTWELD (1.5" - 6" ONLY)
- FLANGED (METRIC AVAILABLE)
- VICTAULIC GROOVE COUPLING

SIZES:

- 1.5", 2", 2.5", 3", 4", 5", 6", 8", 10", 12", 14", 16"

316 STAINLESS STEEL

CONNECTIONS:

- THREADED (1.5" - 6" ONLY)
- BUTTWELD (1.5" - 6" ONLY)
- FLANGED (METRIC AVAILABLE)
- VICTAULIC GROOVE COUPLING

SIZES:

- 1.5", 2", 2.5", 3", 4", 5", 6", 8", 10", 12", 14", 16"

ANODIZED ALUMINUM

CONNECTIONS:

- THREADED (1.5" - 6" ONLY)
- BUTTWELD (1.5" - 6" ONLY)
- FLANGED (METRIC AVAILABLE)
- VICTAULIC GROOVE COUPLING

SIZES:

- 1.5", 2", 2.5", 3", 4", 5", 6", 8", 10", 12", 14"

"Politics is not a bad profession. If you succeed, there are many rewards; if you disgrace yourself, you can always write a book."

—Ronald Reagan



brtmarine.com

800-725-3787



1500-90 VERTICAL VENT CHECK VALVE

The 1500 Series-90 is designed for installations where a 90 degree mount is necessary. The flanged outlet mounts with a 90 degree turn instead of our standard vertical mount.

The 1500-90 allows for ventilation in the open position, and a disc style float will rise in the event of heavy seas and prevent sea water and debris from entering into tanks and bulkheads.

The 1500-90 is available in all sizes.



SPECIFICATIONS

GALVANIZED STEEL

CONNECTIONS:

- THREADED (1.5" - 6" ONLY)
- BUTTWELD (1.5" - 6" ONLY)
- FLANGED (METRIC AVAILABLE)
- VICTAULIC GROOVE COUPLING

SIZES:

- 1.5", 2", 2.5", 3", 4", 5", 6", 8", 10", 12", 14", 16"

304 STAINLESS STEEL

CONNECTIONS:

- THREADED (1.5" - 6" ONLY)
- BUTTWELD (1.5" - 6" ONLY)
- FLANGED (METRIC AVAILABLE)
- VICTAULIC GROOVE COUPLING

SIZES:

- 1.5", 2", 2.5", 3", 4", 5", 6", 8", 10", 12", 14", 16"

316 STAINLESS STEEL

CONNECTIONS:

- THREADED (1.5" - 6" ONLY)
- BUTTWELD (1.5" - 6" ONLY)
- FLANGED (METRIC AVAILABLE)
- VICTAULIC GROOVE COUPLING

SIZES:

- 1.5", 2", 2.5", 3", 4", 5", 6", 8", 10", 12", 14", 16"

ANODIZED ALUMINUM

CONNECTIONS:

- THREADED (1.5" - 6" ONLY)
- BUTTWELD (1.5" - 6" ONLY)
- FLANGED (METRIC AVAILABLE)
- VICTAULIC GROOVE COUPLING

SIZES:

- 1.5", 2", 2.5", 3", 4", 5", 6", 8", 10", 12", 14", 16"

"If we ever forget that we're one nation under GOD, then we will be a nation gone under."

—Ronald Reagan

1500-MC VERTICAL VENT CHECK VALVE

The 1500-MC Series is a vertical vent check valve with the addition of a hand-wheel actuator located on a jackscrew to allow for manual closure when needed.

The 1500-MC may be manually closed by turning the hand-wheel in a clockwise direction until it becomes difficult to turn or cease. To manually open the valve, the hand-wheel should be turned counter-clockwise until it ceases. It is important to make sure the manual closing assembly is fully open so as not to obstruct the operating range of motion of the float disc. Not opening the valve fully could prevent the valve from sealing or venting properly.

Manual closures are available on all sizes of the 1500 Series.



SPECIFICATIONS

GALVANIZED STEEL

CONNECTIONS:

- THREADED (1.5" - 6" ONLY)
- BUTTWELD (1.5" - 6" ONLY)
- FLANGED (METRIC AVAILABLE)
- VICTAULIC GROOVE COUPLING

SIZES:

- 1.5", 2", 2.5", 3", 4", 5", 6", 8", 10", 12", 14", 16"

304 STAINLESS STEEL

CONNECTIONS:

- THREADED (1.5" - 6" ONLY)
- BUTTWELD (1.5" - 6" ONLY)
- FLANGED (METRIC AVAILABLE)
- VICTAULIC GROOVE COUPLING

SIZES:

- 1.5", 2", 2.5", 3", 4", 5", 6", 8", 10", 12", 14", 16"

316 STAINLESS STEEL

CONNECTIONS:

- THREADED (1.5" - 6" ONLY)
- BUTTWELD (1.5" - 6" ONLY)
- FLANGED (METRIC AVAILABLE)
- VICTAULIC GROOVE COUPLING

SIZES:

- 1.5", 2", 2.5", 3", 4", 5", 6", 8", 10", 12", 14", 16"

ANODIZED ALUMINUM

CONNECTIONS:

- THREADED (1.5" - 6" ONLY)
- BUTTWELD (1.5" - 6" ONLY)
- FLANGED (METRIC AVAILABLE)
- VICTAULIC GROOVE COUPLING

SIZES:

- 1.5", 2", 2.5", 3", 4", 5", 6", 8", 10", 12", 14", 16"

"The nearest thing to eternal life we will ever see on this earth is a government program."

—Ronald Reagan



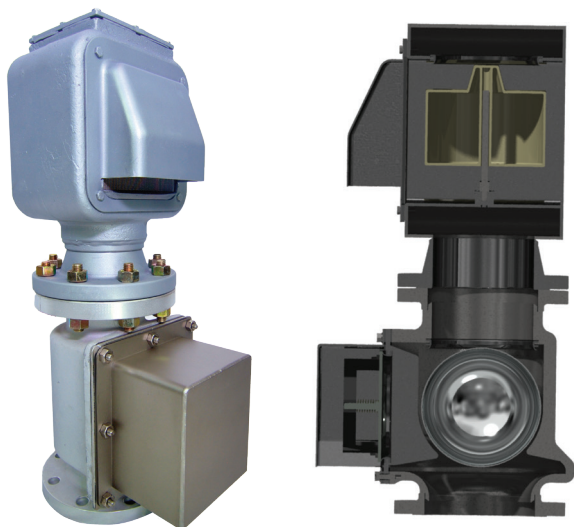
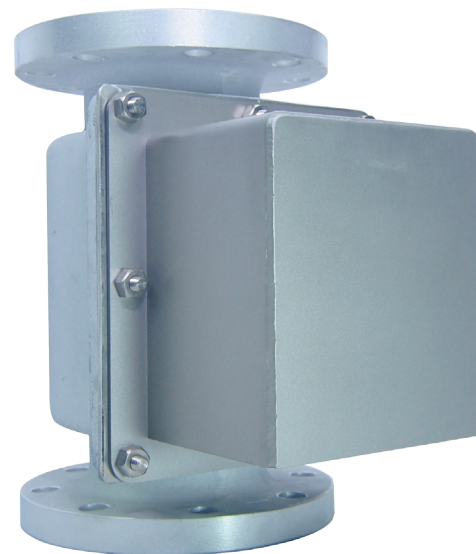
brtmarine.com

800-725-3787



1500-MV MUD VENT VALVE

The 1500-MV Mud Valve is designed for tanks that carry liquid mud. Inside the mud chamber is a ball check that prevents the liquid mud from rising into the upper vertical vent check valve. The liquid mud is instead forced through a spring loaded door (instead of a burst disc) on the front of the valve. After the mud flow resides, the ball float returns to it's original position allowing airflow to return through the upper chamber. The 1500-MV is designed for ease of maintenance. To clean, simply remove the front cover assembly, clean, and replace.



Wager's Model 1500 Vertical Vent Check Valve works in collaboration with the 1500-MV Mud Valve. Simply connect the two valves together at the flange.



SPECIFICATIONS

GALVANIZED STEEL

CONNECTIONS:

- THREADED
- BUTTWELD
- FLANGED (METRIC AVAILABLE)
- VICTAULIC FLANGE

SIZES:

- 4", 5", 6", 8", 10"

316 STAINLESS STEEL

CONNECTIONS:

- THREADED
- BUTTWELD
- FLANGED (METRIC AVAILABLE)
- VICTAULIC FLANGE

SIZES:

- 4", 5", 6", 8", 10"

ANODIZED ALUMINUM (UPON REQUEST)

CONNECTIONS:

- THREADED
- BUTTWELD
- FLANGED (METRIC AVAILABLE)
- VICTAULIC FLANGE

SIZES:

- 4", 5", 6", 8", 10"

"The politicians say 'we' can't afford a tax cut. Maybe we can't afford the politicians."

—Steve Forbes

1600 INVERTED TANK AIR ESCAPE

Tank Air Escape Valves allow free passage of air into tanks, dry cargo holds, or storage space. They protect tanks and bulkheads from pressure build-up during loading and unloading of liquid or dry cargo and assure maximum efficiency during operations.

Tank air escape valves do not have a float or automatic closing, they are used in locations not accessible to sea water.

All steel castings are hot dipped galvanized. All aluminum castings are anodized.



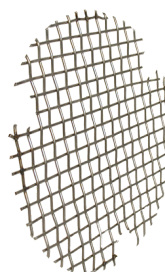
BODY



**FLAME
SCREEN**



**SPACER
RING**



**PROTECTIVE
MESH**



CAP

SPECIFICATIONS

GALVANIZED STEEL

CONNECTIONS:

- THREADED
- BUTTWELD
- SOCKETWELD
- FLANGED (METRIC AVAILABLE)

SIZES:

- 1.5", 2", 2.5", 3", 4", 5", 6", 8", 10", 12", 14", 16"

BRONZE

CONNECTIONS:

- THREADED
- SIL-BRAZED
- FLANGED

SIZES:

- 1.5", 2", 2.5", 3", 4", 5", 6", 8", 10", 12"

ANODIZED ALUMINUM

CONNECTIONS:

- THREADED
- BUTTWELD
- SOCKETWELD
- FLANGED (METRIC AVAILABLE)

SIZES:

- 1.5", 2", 2.5", 3", 4", 5", 6", 8", 10", 12"

STAINLESS STEEL

CONNECTIONS:

- THREADED
- BUTTWELD
- SOCKETWELD
- FLANGED (METRIC AVAILABLE)

SIZES:

- 1.5", 2", 2.5", 3", 4", 5", 6", 8", 10", 12", 14", 16"

"All God's giants have been weak men, who did great things for God because they reckoned on His being with them."

—Hudson Taylor



brtmarine.com

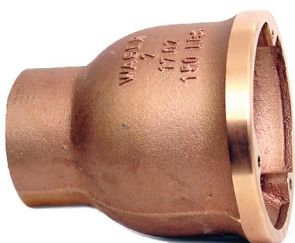
800-725-3787



1700 INVERTED VENT CHECK VALVE

Wager is the original patent holder of the Inverted Vent Check Valve.

This valve protects tanks and bulkheads from pressure build-up during loading and unloading of liquid or dry cargo and assure maximum efficiency during operations. The ball float prevents contamination of the tank cargo by sea water during heavy seas. All steel castings are hot dipped galvanized. All aluminum castings are anodized.



BODY



FLOAT



**FLAME
SCREEN**



SPACER



**PROTECTIVE
MESH**



CAP

SPECIFICATIONS

GALVANIZED STEEL

FLOAT MATERIAL

- 316 STAINLESS STEEL (STANDARD)
- COPPER
- HIGH DENSITY POLETHYLENE
- MONEL

CONNECTIONS:

- THREADED
- BUTTWELD
- SOCKETWELD
- FLANGED
- VICTAULIC

SIZES:

- .50", .75", 1", 1.25", 1.5", 2", 2.5", 3", 4"

BRONZE

FLOAT MATERIAL

- 316 STAINLESS STEEL (STANDARD)
- COPPER
- HIGH DENSITY POLETHYLENE
- MONEL

CONNECTIONS:

- THREADED
- BUTTWELD
- SOCKETWELD
- FLANGED
- VICTAULIC

SIZES:

- .50", .75", 1", 1.25", 1.5", 2", 2.5", 3", 4"

ANODIZED ALUMINUM

FLOAT MATERIAL

- 316 STAINLESS STEEL (STANDARD)
- COPPER
- HIGH DENSITY POLETHYLENE
- MONEL

CONNECTIONS:

- THREADED
- BUTTWELD
- SOCKETWELD
- FLANGED
- VICTAULIC

SIZES:

- .50", .75", 1", 1.25", 1.5", 2", 2.5", 3", 4"

STAINLESS STEEL

FLOAT MATERIAL

- 316 STAINLESS STEEL (STANDARD)
- COPPER
- HIGH DENSITY POLETHYLENE
- MONEL

CONNECTIONS:

- THREADED
- BUTTWELD
- SOCKETWELD
- FLANGED
- VICTAULIC

SIZES:

- .50", .75", 1", 1.25", 1.5", 2", 2.5", 3", 4"

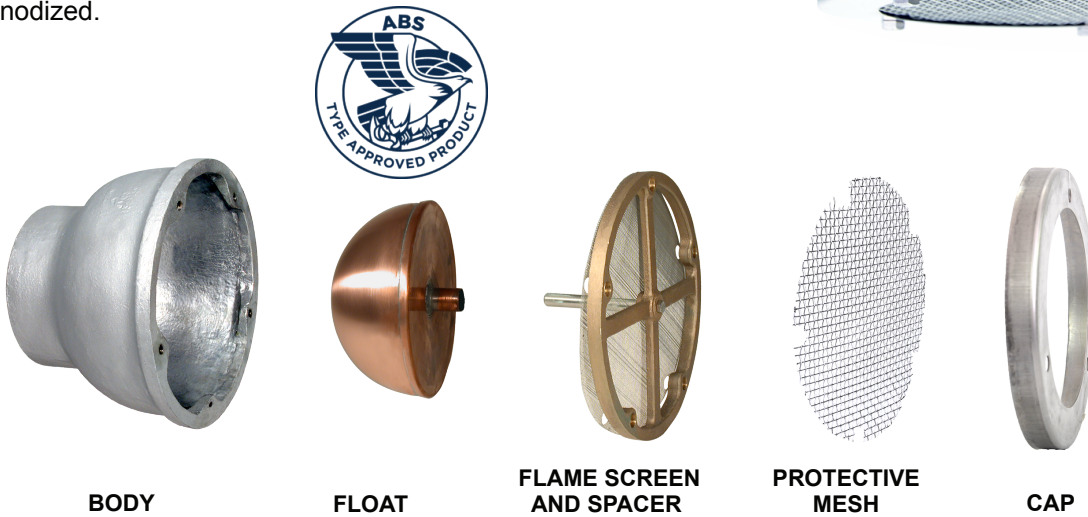
"There is a living God. He has spoken in the Bible. He means what He says and will do all He has promised."

—Hudson Taylor

1700 SEMICIRCULAR FLOAT INVERTED VENT CHECK VALVE

Wager is the original patent holder of the Inverted Vent Check Valve.

This valve protects tanks and bulkheads from pressure build-up during loading and unloading of liquid or dry cargo and assure maximum efficiency during operations. The ball float prevents contamination of the tank cargo by sea water during heavy seas. The 1700 Semicircular float valve is designed with a half float on a guide rod. This unique design minimizes the valve body to save on space and weight, All steel castings are hot dipped galvanized. All aluminum castings are anodized.



SPECIFICATIONS

GALVANIZED STEEL

FLOAT MATERIAL

- 316 STAINLESS STEEL (STANDARD)
- COPPER
- HIGH DENSITY POLETHYLENE
- MONEL

CONNECTIONS:

- THREADED
- BUTTWELD
- SOCKETWELD
- FLANGED

SIZES:

- .5", 6", 8", 10", 12", 14", 16"

BRONZE

FLOAT MATERIAL

- 316 STAINLESS STEEL
- COPPER (STANDARD)
- HIGH DENSITY POLETHYLENE
- MONEL

CONNECTIONS:

- THREADED
- BUTTWELD
- SOCKETWELD
- FLANGED

SIZES:

- .5", 6", 8", 10", 12"

ANODIZED ALUMINUM

FLOAT MATERIAL

- 316 STAINLESS STEEL
- COPPER (STANDARD)
- HIGH DENSITY POLETHYLENE
- MONEL

CONNECTIONS:

- THREADED
- BUTTWELD
- SOCKETWELD
- FLANGED

SIZES:

- .5", 6", 8", 10", 12"

STAINLESS STEEL

FLOAT MATERIAL

- 316 STAINLESS STEEL
- COPPER (STANDARD)
- HIGH DENSITY POLETHYLENE
- MONEL

CONNECTIONS:

- THREADED
- BUTTWELD
- SOCKETWELD
- FLANGED

SIZES:

- .5", 6", 8", 10", 12", 14", 16"

"Peace is not the absence of trouble, but the presence of God."

—J. Oswald Sanders



brtmarine.com

800-725-3787

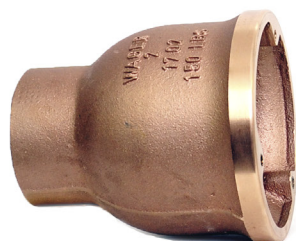
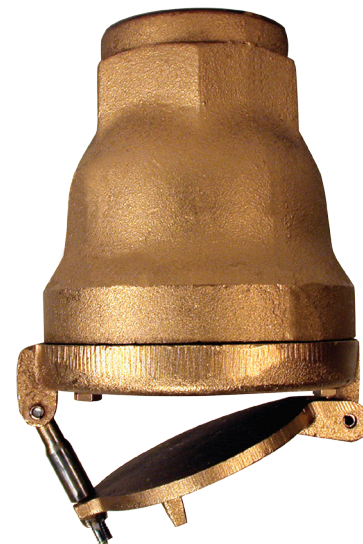
PROUD
DISTRIBUTOR OF
WAGER
COMPANY

1750 INVERTED VENT CHECK VALVE

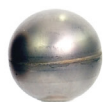
Wager is the original patent holder of the Inverted Vent Check Valve.

This valve protects tanks and bulkheads from pressure build-up during loading and unloading of liquid or dry cargo and assure maximum efficiency during operations. The ball float prevents contamination of the tank cargo by sea water during heavy seas. All steel castings are hot dipped galvanized.

All aluminum castings are anodized.



BODY



FLOAT



**FLAME
SCREEN**



SPACER



**PROTECTIVE
MESH**



COVER

SPECIFICATIONS

GALVANIZED STEEL

FLOAT MATERIAL

- 316 STAINLESS STEEL (STANDARD)
- COPPER
- HIGH DENSITY POLETHYLENE
- MONEL

CONNECTIONS:

- THREADED
- BUTTWELD
- SOCKETWELD
- FLANGED
- VICTAULIC

SIZES:

- .50", .75", 1", 1.25", 1.5", 2", 2.5", 3", 4"

BRONZE

FLOAT MATERIAL

- 316 STAINLESS STEEL (STANDARD)
- COPPER
- HIGH DENSITY POLETHYLENE
- MONEL

CONNECTIONS:

- THREADED
- BUTTWELD
- SOCKETWELD
- FLANGED
- VICTAULIC

SIZES:

- .50", .75", 1", 1.25", 1.5", 2", 2.5", 3", 4"

ANODIZED ALUMINUM

FLOAT MATERIAL

- 316 STAINLESS STEEL (STANDARD)
- COPPER
- HIGH DENSITY POLETHYLENE
- MONEL

CONNECTIONS:

- THREADED
- BUTTWELD
- SOCKETWELD
- FLANGED
- VICTAULIC

SIZES:

- .50", .75", 1", 1.25", 1.5", 2", 2.5", 3", 4"

STAINLESS STEEL

FLOAT MATERIAL

- 316 STAINLESS STEEL (STANDARD)
- COPPER
- HIGH DENSITY POLETHYLENE
- MONEL

CONNECTIONS:

- THREADED
- BUTTWELD
- SOCKETWELD
- FLANGED
- VICTAULIC

SIZES:

- .50", .75", 1", 1.25", 1.5", 2", 2.5", 3", 4"

"You do not need a great faith, but faith in a great God."

—Hudson Taylor

1750 SEMICIRCULAR FLOAT INVERTED VENT CHECK VALVE

Our 1750 Semicircular Float valve is designed with a half float on a guide rod.

This unique design minimizes the valve body to save on space and weight.

A heavy duty hinge cover assembly prevents sea water from entering tanks in rough seas. The hinged cover can be visually seen from the bridge while in the open or closed position. The advantage to our design is the ability to visually inspect tank vents before any pumping sequences are performed. A stainless steel toggle bolt eliminates the need for any additional tools to open or close the cover. Wager is the original patent holder of the Semicircular Float Inverted Vent Check Valve.



BODY



FLOAT



FLAME SCREEN
AND SPACER



PROTECTIVE
MESH



COVER



SPECIFICATIONS

GALVANIZED STEEL

FLOAT MATERIAL

- 316 STAINLESS STEEL (STANDARD)
- COPPER
- HIGH DENSITY POLETHYLENE
- MONEL

CONNECTIONS:

- THREADED
- BUTTWELD
- SOCKETWELD
- FLANGED

SIZES:

- .5", 6", 8", 10", 12", 14", 16"

BRONZE

FLOAT MATERIAL

- 316 STAINLESS STEEL
- COPPER (STANDARD)
- HIGH DENSITY POLETHYLENE
- MONEL

CONNECTIONS:

- THREADED
- BUTTWELD
- SOCKETWELD
- FLANGED

SIZES:

- .5", 6", 8", 10", 12"

ANODIZED ALUMINUM

FLOAT MATERIAL

- 316 STAINLESS STEEL
- COPPER (STANDARD)
- HIGH DENSITY POLETHYLENE
- MONEL

CONNECTIONS:

- THREADED
- BUTTWELD
- SOCKETWELD
- FLANGED

SIZES:

- .5", 6", 8", 10", 12"

STAINLESS STEEL

FLOAT MATERIAL

- 316 STAINLESS STEEL
- COPPER (STANDARD)
- HIGH DENSITY POLETHYLENE
- MONEL

CONNECTIONS:

- THREADED
- BUTTWELD
- SOCKETWELD
- FLANGED

SIZES:

- .5", 6", 8", 10", 12", 14", 16"

"Not infrequently our GOD brings His people into difficulties on purpose that they may come to know Him as they could not otherwise do."

—Hudson Taylor



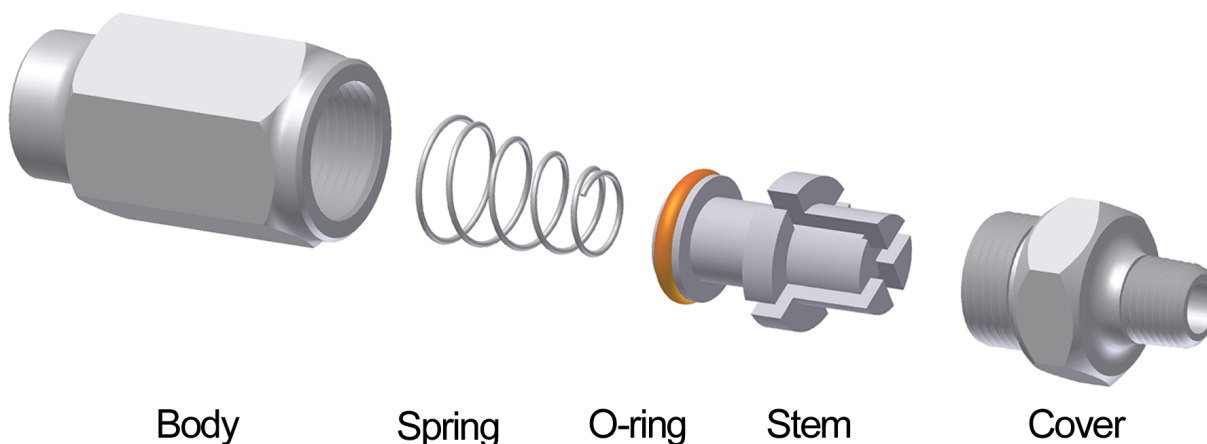
brtmarine.com

800-725-3787



AIR CHECK VALVE

The Wager Air Valve meets the requirements of USN and USCG on air scavenger lines to soot blower steam piping on water-tube boilers. This Automatic Spring Check Valve is 3 1/2 inches long by 1 1/4 inch diameter, is of simple but rugged design of only five pieces, consisting of a Stainless Steel Body and Cover fully enclosing the Stainless Steel valve-stem and Inconel spring. It can be installed in either vertical or horizontal position, and has 3/8" IPS threads at both male and female ends. Due to the non-corrosive feature of the valve, it may also be used on gas, water, oil or corrosive liquid flow where positive shutoff is required. The valve is designed to withstand pressures up to 2000 psi hydrostatic.



"If Jesus Christ be the Son of God and died for me, then no sacrifice can be too great for me to make for Him."

—C.T. Studd

IN-LINE VENT CHECK VALVE

Wager's In-Line Valves protect tanks and bulkheads from pressure or vacuum buildup during loading or unloading of tanks, and are used in locations where operations require an in-the-line vent check valve rather than a terminal vent valve.

The ball check prevents contamination of tank fluids by water during rough seas. A fine mesh flame screen protects tank gases from igniting when subject to a deck fire. The vent is available less a screen where a low pressure vertical ball check is the only requirement.



SPECIFICATIONS

GALVANIZED STEEL

CONNECTIONS:

- FLANGED
- BUTTWELD
- THREADED
- SOCKETWELD

FLOAT:

- STAINLESS STEEL FULL ROUND
- HDPE FLOAT

SIZES:

- 1.5", 2", 2.5", 3", 4", 6", 8"

STAINLESS STEEL

CONNECTIONS:

- FLANGED
- BUTTWELD
- THREADED
- SOCKETWELD

FLOAT:

- STAINLESS STEEL FULL ROUND
- HDPE FLOAT

SIZES:

- 1.5", 2", 2.5", 3", 4", 6", 8"

ANODIZED ALUMINUM

CONNECTIONS:

- FLANGED
- BUTTWELD
- THREADED
- SOCKETWELD

FLOAT:

- STAINLESS STEEL FULL ROUND
- HDPE FLOAT

SIZES:

- 1.5", 2", 2.5", 3", 4", 6"

BRONZE

CONNECTIONS:

- FLANGED
- THREADED
- SIL-BRAZED

FLOAT:

- STAINLESS STEEL FULL ROUND
- HDPE FLOAT

SIZES:

- 1.5", 2", 2.5", 3", 4", 6"

"I am for freedom of religion, and against all maneuvers to bring about a legal ascendancy of one sect over another."

—Thomas Jefferson



brtmarine.com

800-725-3787



HORIZONTAL IN-LINE VENT CHECK VALVE

The In-Line Vent Check Valves protect tanks and bulkheads in the same way as standard vent check valves, and should be used during those operations where vent line require in-the-line valves rather than terminal vents. However, the horizontal design allows for more flexibility during the design phase of your piping project.



SPECIFICATIONS

GALVANIZED STEEL

CONNECTIONS:

- FLANGE WELDING NECK

FLOAT:

- STAINLESS STEEL FULL ROUND

GASKET:

- BUNA GASKET

SIZES:

- 6", 8", 10", 12", (14" ABS TYPE APPROVED)

304 STAINLESS STEEL

CONNECTIONS:

- FLANGE WELDING NECK

FLOAT:

- STAINLESS STEEL FULL ROUND

GASKET:

- BUNA GASKET

SIZES:

- 6", 8", 10", 12", (14" ABS TYPE APPROVED)

316 STAINLESS STEEL

CONNECTIONS:

- FLANGE WELDING NECK

FLOAT:

- STAINLESS STEEL FULL ROUND

GASKET:

- BUNA GASKET

SIZES:

- 6", 8", 10", 12", (14" ABS TYPE APPROVED)

"The spirit of resistance to government is so valuable on certain occasions, that I wish it to be always kept alive."

—Thomas Jefferson

DEWATERING PLUG

Wager's Dewatering Plug is used for draining water from the hull in locations where bilge pumps are not available.



PLUG

GASKET

BODY



Wrench Sold Separately

SPECIFICATIONS

CARBON STEEL

GASKET:

- NITRILE RUBBER

PLUG:

- CAST BRONZE
- * AVAILABLE IN SQUARE OR HEX

SIZES:

- 1.5", 2", 2.5", 3"

316 STAINLESS STEEL

GASKET:

- NITRILE RUBBER

PLUG:

- CAST BRONZE
- * AVAILABLE IN SQUARE OR HEX

SIZES:

- 1.5", 2", 2.5", 3"

"The opinions of men are not the object of civil government, nor under its jurisdiction."

—Thomas Jefferson



brtmarine.com

800-725-3787



PIPE CAP

- Made of bronze for its anti - corrosive properties
- Contains neoprene gasket for positive pipe seal
- Offered standard with 2" straight pipe thread
- Includes rugged bronze safety chain to secure it to its installation location.
- Used in the marine field for Fire Valves, Sounding Tubes, capping off existing pipes.



SPECIFICATIONS

BRONZE

CONNECTIONS:

- THREADED

CHAIN:

- BRONZE
- STAINLESS STEEL

SIZES:

- 1.5", 2"
- * OTHER SIZES UPON REQUEST

316 STAINLESS STEEL

CONNECTIONS:

- THREADED

CHAIN:

- BRONZE
- STAINLESS STEEL

SIZES:

- 1.5", 2"
- * OTHER SIZES UPON REQUEST

"What country can preserve its liberties if its rulers are not warned from time to time that their people preserve the spirit of resistance? Let them take arms."

—Thomas Jefferson

ROSEBOX STRAINER

The Rosebox strainer was designed by Keppel -Amfels, and manufactured by Wager. Strainers are designed to allow flow thru the piping system of a ship, but to filter undesirable solids. Most strainers use a 1 to 1 ratio with the pipe dimension, but filtering devices can be selected based upon the job required to be done.

If the liquids passing are highly contaminated or viscous in nature, then a larger strainer may be selected. The strainer is made of perforated sheet metal, is hot dip galvanized for added protection, and contains no moving parts.



SPECIFICATIONS

GALVANIZED STEEL

CONNECTIONS:

- COLLAR CLAMP

SIZES:

- 1.5", 2", 2.5", 3", 4", 6", 8", 10", 12"

STAINLESS STEEL

CONNECTIONS:

- COLLAR CLAMP

SIZES:

- 1.5", 2", 2.5", 3", 4", 6", 8", 10", 12"

"Laws that forbid the carrying of arms disarm only those who are neither inclined nor determined to commit crimes."

—Thomas Jefferson



brtmarine.com

800-725-3787



SOUNDING TUBE

Wager's Sounding Tube furnished with stainless steel body for direct welding to steel decks. Available with optional plug chain to prevent accidental loss.



Wrench Sold Separately

SPECIFICATIONS

ANODIZED ALUMINUM

PLUG:

- BRONZE
- STAINLESS STEEL

CONNECTIONS:

- WELD
- SOCKETWELD

SIZES:

- 1.5", 2"

316 STAINLESS STEEL

PLUG:

- BRONZE
- STAINLESS STEEL

CONNECTIONS:

- WELD
- SOCKETWELD

SIZES:

- 1.5", 2", 2.5", 3"

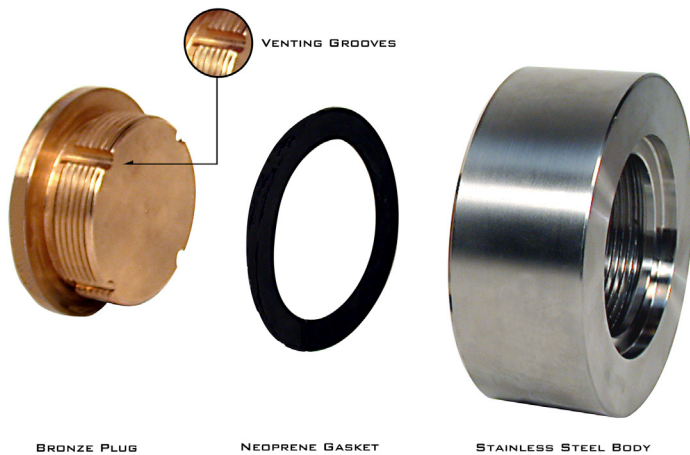
"Every citizen should be a soldier. This was the case with the Greeks and Romans, and must be that of every free state."

—Thomas Jefferson

VENTING SOUNDING TUBE

Wager's Venting Sounding tube allows for a release of sounding pipe pressure without completely removing the plug.

Available with optional plug chain to prevent accidental loss.



Wrench Sold Separately

SPECIFICATIONS

ANODIZED ALUMINUM

PLUG:

- BRONZE
- STAINLESS STEEL

CONNECTIONS:

- WELD
- SOCKETWELD

SIZES:

- 1.5", 2"

316 STAINLESS STEEL

PLUG:

- BRONZE
- STAINLESS STEEL

CONNECTIONS:

- WELD
- SOCKETWELD

SIZES:

- 1.5", 2", 2.5", 3"

"Spiritual freedom is the root of political liberty...As the union between spiritual freedom and political liberty seems nearly inseparable, it is our duty to defend both."

—Thomas Paine



brtmarine.com

800-725-3787





1172 Camp Street, New Orleans, LA 70130
800-725-3787 | 504-525-7137
www.BRTMarine.com