

SERVING THE MARINE INDUSTRY SINCE 1947



**Wintech**  
WINCHES & FAIRLEADS

PRODUCT LINE

WINCHES & FAIRLEADS



# ***Wintech***

*WINCHES & FAIRLEADS*



INLAND MARINE EQUIPMENT

# BARGE MOVING SYSTEM — CPK SERIES

## TYPICAL APPLICATIONS

- GRAIN LOADING AND UNLOADING TERMINALS
- COAL, STEEL, CEMENT, AND WOOD CHIP TERMINALS
- MID-STREAM CRANE BARGE STEVEDORING OPERATIONS

## STANDARD SYSTEM FEATURES

- HEAVY DUTY CPK CHAIN DRIVE WINCHES
- VFD CONTROL SYSTEM
  - NEMA 4 MAIN CABINET TO HOUSE ALL ELECTRICAL COMPONENTS
  - CONTROL OPERATOR CONSOLE WITH ENGRAVED PANEL
- VARIABLE SPEED AND LOAD CONTROL FOR PRECISE POSITIONING
- SMOOTH ACCELERATION/DECELERATION TO REDUCE SHOCK LOADS
- AUTO MODE ALLOWS CONTROL OF BARGE MOVE WITH SINGLE JOYSTICK
- STANDARD SYSTEM UTILIZES EXTERNAL DRAG BRAKE TO MAINTAIN CONTINUOUS BACK TENSION DURING MOVE

## NEW SYSTEM FEATURES

- ALL MOVING PARTS COMPLETELY GUARDED
- PRESSURE ROLLER TO HELP PREVENT CABLE FOULING ISSUES
- NYLATRON GUIDE ROLLERS AT CABLE EXIT TO PREVENT CABLE WEAR
- NO COMPONENTS PROTRUDE OUT PAST FOOTPRINT OF THE WINCH BASE
- STROBE/HORN COMBO THAT ACTIVATES WHEN SYSTEM IN OPERATION

## OPTIONAL FEATURES/EQUIPMENT

- VECTOR DRIVE CONTROLS TO MAINTAIN TENSION ELECTRICALLY
- CUSTOM DRUM LENGTHS AND DIAMETERS FOR LARGE CABLE CAPACITIES
- WIRELESS REMOTE CONTROL
- ROTARY LIMIT SWITCHES
- DIAMOND LEAD SCREW LEVELWIND
- FAIRLEADS AND RIGGING
- BREASTING WINCHES
- SLIDE LINE SYSTEMS



“This election in Georgia will be the most important in history. You have nothing to worry about unless you are a taxpayer, parent, gun owner, cop, a person of faith, or an unborn baby!”

—Louisiana Sen. John Kennedy



[brtmarine.com](http://brtmarine.com)

800-725-3787

PROUD  
DISTRIBUTOR OF  
**Wintech**  
WINCHES & FAIRLEADS



# BARGE MOVING SYSTEM — CPK SERIES

## OPERATION STROBE/HORN

- ILLUMINATES/BEEPS WHEN WINCH OPERATES
- ADJUSTABLE VOLUME
- PRE-WIRED INTO MOTOR JUNCTION BOX

## FRONT WINCH GUARD

- POWDER COATED ALUMINUM
- PROTECTS THE WINCH DRUM AND CHAIN
- RUBBER LATCHES TO SECURE (NO TOOLS REQUIRED FOR REMOVAL)

## DRUM FLANGE GUARD

- CRADLES COMPLETELY ENCLOSE DRUM AREA
- SPACER BARS KEEP CABLE FROM EXITING DRUM ENVELOPE
- MINIMIZES POTENTIAL WINCH DAMAGE FROM BIRDNESTING

## GUIDE ROLLERS

- NYLATRON EXIT ROLLERS
- PROTECTS THE CABLE FROM WEAR
- FOR USE WITH WIRE OR SYNTHETIC ROPE

## WINCH SPECS

- BEVEL GEARBOX WITH CHAIN REDUCTION
- HEAVY DUTY WELDED FRAME
- DRUM MOUNTED ON ROLLER BEARINGS

## MOTOR INFO

- TEFC INVERTER DUTY / IP65 RATED
- SPRING APPLIED / ELECTRIC RELEASE MOTOR HOLDING BRAKE
- ENCODER (VECTOR DRIVE SYSTEM)

## BACK WINCH GUARDS

- POWDER COATED ALUMINUM
- PROTECTS CHAIN / DRAG BRAKE
- RUBBER LATCHES TO SECURE (NO TOOLS REQUIRED FRO REMOVAL)

## DRAG BRAKE SYSTEM

- MAINTAINS CONTINUOUS BACK TENSION DURING MOVE
- GUARDED AND COMPLETELY INSIDE WINCH FOOTPRINT

## ROTARY LIMIT SWITCH

- OPTIONAL FEATURE
- PREVENTS OVER TRAVEL

## PRESSURE ROLLER

- HELPS PREVENT CABLE FOULING
- ASSISTS IN EVEN CABLE SPOOLING



## PERFORMANCE CHART

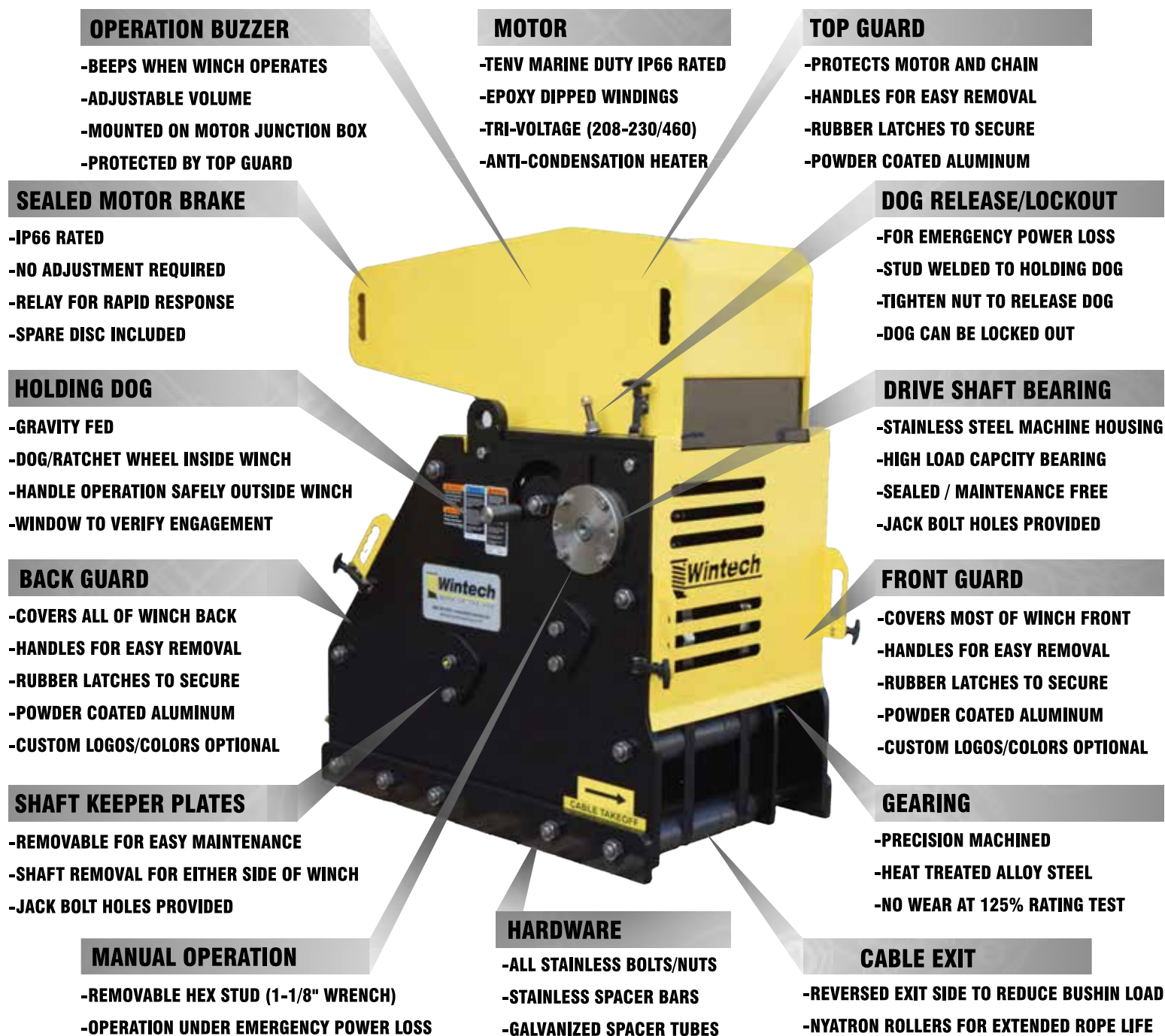
MODEL	CPK15000	CPK20000	CPK25000	CPK30000	CPK35000	CPK40000
LINEPULL 1ST LAYER	16,000 LBS	20,000 LBS	25,000 LBS	30,000 LBS	35,000 LBS	40,000 LBS
LINESPEED 1ST LAYER	21 FPM	25 FPM	25 FPM	22 FPM	23 FPM	23 FPM
HORSEPOWER	10HP	15HP	20HP	20HP	25HP	30HP
RECOMMENDED WIRE ROPE	3/4"	7/8"	7/8"	1"	1-1/8"	1-1/8"

"You can only be young once, but you can always be immature."

—Louisiana Sen. John Kennedy



# DECK WINCH — DW SERIES



"Americans are thinking, there are some good members of congress but we can't figure out what they are good for. Others are thinking, how did these morons make it through the birth canal."

—Louisiana Sen. John Kennedy



[brtmarine.com](http://brtmarine.com)

800-725-3787

PROUD  
DISTRIBUTOR OF  
**Wintech**  
WINCHES & FAIRLEADS

BR

# DECK WINCH — DW SERIES

WINTech WINCHES ARE MANUFACTURED FROM RAW MATERIAL TO FINISHED PRODUCT IN OUR STATE OF THE ART FACILITY IN LOUISIANA. FROM THE PLASMA CUTTER TO THE MECHANICAL PRECISION GEAR HOBS TO THE MODERN COMPUTER CONTROLLED LATHES AND MILLS, WINTech HANDLES ALL OF THE MANUFACTURING PROCESSES. OUR UNIQUE FABRICATION CAPABILITIES ALLOW FOR RAPID RESPONSE AND CUSTOMIZATION TO MEET YOUR NEEDS.

PERFORMANCE CHART (LBS)						
MODEL	DOG HOLDING	BRAKE HOLDING	LINEPULL	STALL PULL	LINESPEED	HP
DW30-E5	60,000	44,000	9,000	28,000	18	5
DW40-E5	80,000	54,000	11,000	34,000	14	5
DW40-E7.5S	80,000	50,000	9,000	28,000	25	7.5
DW40-E7.5	80,000	60,000	11,000	34,000	20	7.5
DW65-E7.5	130,000	75,000	13,500	42,000	16	7.5
DW65-E10	130,000	55,000	13,000	42,000	23	10
DW75-E10	150,000	80,000	19,000	60,000	15	10
DW75-E15	150,000	85,000	21,000	63,000	22	15

NOTE: PERFORMANCE SHOWN AT FIRST LAYER / CUSTOM LINEPULLS AND LINESPEEDS AVAILABLE

</

“It’s as dead as four o’clock.”

—Louisiana Sen. John Kennedy

# DUAL DRUM DECK WINCH — KR SERIES

## LIFTING LUGS

- PROVIDED FOR 3 POINT LIFT
- INCORPORATED INTO TOP PLATE
- DESIGNED TO FIT SHACKLE OR HOOK

## MOTORS

- TENV MARINE DUTY IP66 RATED
- EPOXY DIPPED WINDINGS
- TRI-VOLTAGE (208-230/460)
- ANTI-CONDENSATION HEATER

## TOP GUARD

- COVERS CHAIN AND SPROCKETS
- HANDLES FOR EASY REMOVAL
- RUBBER LATCHES TO SECURE
- POWDER COATED ALUMINUM

## SEALED MOTOR BRAKE

- IP66 RATED
- NO ADJUSTMENT REQUIRED
- RELAY FOR RAPID RESPONSE

## HOLDING DOG

- GRAVITY FED
- DOG/RATCHET WHEEL INSIDE WINCH
- HANDLE OPERATION SAFELY OUTSIDE WINCH
- WINDOW TO VERIFY ENGAGEMENT

## BACK GUARD

- COVERS ALL OF WINCH BACK
- HINGED FOR ACCESS
- OPTIONAL CONTROL PANEL MOUNT

## SHAFT KEEPER PLATES

- REMOVABLE FOR EASY MAINTENANCE
- SHAFT REMOVAL FOR EITHER SIDE OF WINCH
- JACK BOLT HOLES PROVIDED

## MANUAL OPERATION

- REMOVABLE HEX STUD (1-1/8" WRENCH)
- OPERATION UNDER EMERGENCY POWER LOSS

## HARDWARE

- ALL STAINLESS BOLTS/NUTS
- STAINLESS SPACER BARS
- GALVANIZED SPACER TUBES

## DRIVE SHAFT BEARING

- STAINLESS STEEL MACHINE HOUSING
- HIGH LOAD CAPACITY BEARING
- SEALED / GREASEABLE
- JACK BOLT HOLES PROVIDED

## FRONT GUARD

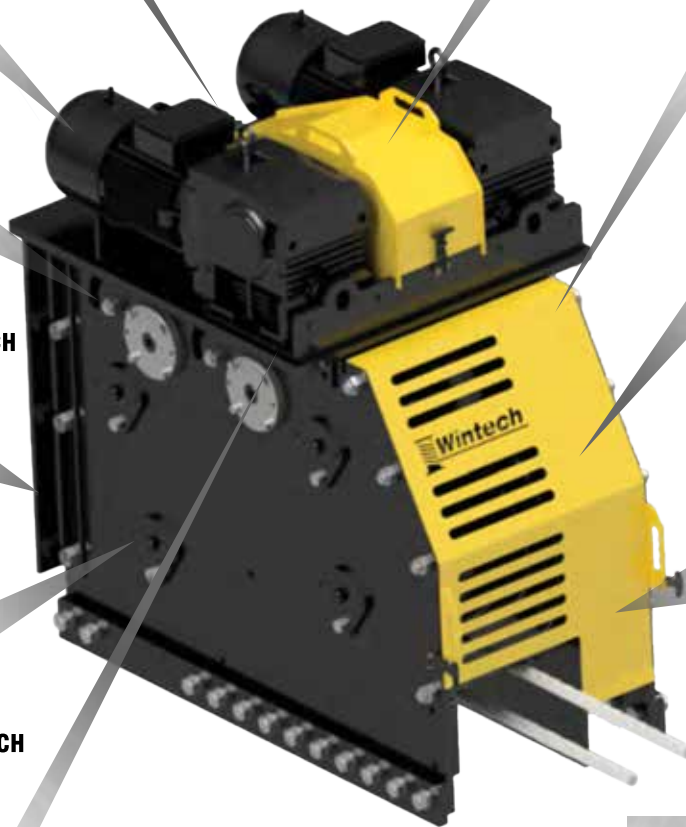
- COVERS MOST OF WINCH FRONT
- HANDLES FOR EASY REMOVAL
- RUBBER LATCHES TO SECURE
- POWDER COATED ALUMINUM
- CUSTOM LOGOS/COLORS OPTIONAL

## GEARING

- PRECISION MACHINED
- HEAT TREATED ALLOY STEEL
- NO WEAR AT 125% RATING TEST

## CABLE EXIT

- DUAL CABLE EXITS OUT OF FRONT OF WINCH
- FRONT DRUM RAISED FOR HIGHER EXIT
- BACK DRUM LOWERED FOR LOWER EXIT



"Always follow your heart.....but take your brains with you."

—Louisiana Sen. John Kennedy



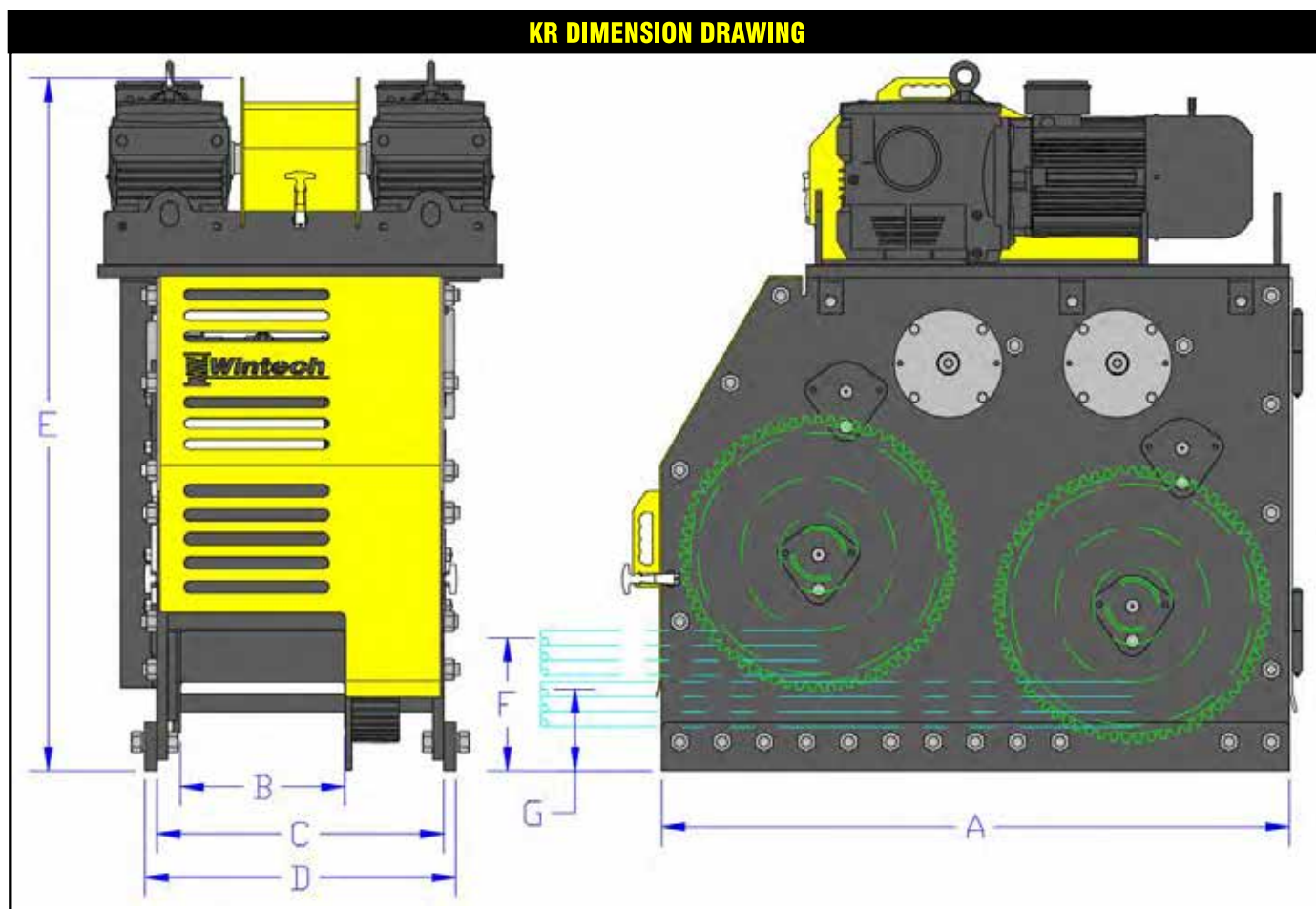
[brtmarine.com](http://brtmarine.com)

800-725-3787





# DUAL DRUM DECK WINCH — KR SERIES



**KR PERFORMANCE CHART (PER DRUM)**

MODEL	DOG HOLDING	BRAKE HOLDING	LINEPULL	STALL PULL	LINESPEED	HP
KR40-E7.5	80,000 LBS	60,000 LBS	11,000 LBS	34,000 LBS	20 FPM	7.5
KR65-E7.5	130,000 LBS	75,000 LBS	13,500 LBS	42,000 LBS	16 FPM	7.5

NOTE: KR SUPPLIED IN LEFT AND RIGHT HAND CONFIGURATIONS

PERFORMANCE SHOWN AT FIRST LAYER / CUSTOM LINEPULLS AND LINESPEEDS AVAILABLE

**KR DIMENSION CHART**

MODEL	DRUM CORE	A	B	C	D	E	F	G
KR40	10-3/4"	44"	11"	20"	21"	55"	9-1/8"	5-5/8"
KR65	12-3/4"	52"	13-5/8"	23-3/4"	25-3/4"	57-5/16"	11"	6-3/4"

**KR CABLE CAPACITY CHART (PER DRUM)**

MODEL	3/4"	7/8"	1"	1-1/8"	1-1/4"	1-1/2"
KR40	140 FT	125 FT	120 FT	100 FT	90 FT	-
KR65	-	185 FT	165 FT	155 FT	140 FT	125 FT

NOTE: EXTENDED DRUM LENGTHS AVAILABLE

# DUAL DRUM DECK WINCH — HW SERIES

## LIFTING LUGS

- PROVIDED FOR 2 POINT LIFT
- INCORPORATED INTO TOP PLATE
- DESIGNED TO FIT SHACKLE OR HOOK

## MOTORS

- TENV MARINE DUTY IP66 RATED
- EPOXY DIPPED WINDINGS
- TRI-VOLTAGE (208-230/460)
- ANTI-CONDENSATION HEATER

## TOP GUARDS

- COVERS CHAIN AND SPROCKETS
- HANDLES FOR EASY REMOVAL
- RUBBER LATCHES TO SECURE
- POWDER COATED ALUMINUM

## SEALED MOTOR BRAKE

- IP66 RATED
- NO ADJUSTMENT REQUIRED
- RELAY FOR RAPID RESPONSE

## HOLDING DOG

- GRAVITY FED
- DOG/RATCHET WHEEL INSIDE WINCH
- HANDLE OPERATION SAFELY OUTSIDE WINCH
- PIVOTING DOG LOCK

## LEFT GUARD

- COVERS MOST OF WINCH BACK
- HANDLES FOR EASY REMOVAL
- RUBBER LATCHES TO SECURE

## SHAFT KEEPER PLATES

- REMOVABLE FOR EASY MAINTENANCE
- SHAFT REMOVAL FOR EITHER SIDE OF WINCH
- JACK BOLT HOLES PROVIDED

## MANUAL OPERATION

- REMOVABLE HEX STUD (1-1/8" WRENCH)
- OPERATION UNDER EMERGENCY POWER LOSS

## HARDWARE

- ALL STAINLESS BOLTS/NUTS
- STAINLESS SPACER BARS
- GALVANIZED SPACER TUBES

## DRIVE SHAFT BEARING

- STAINLESS STEEL MACHINE HOUSING
- HIGH LOAD CAPACITY BEARING
- SEALED / GREASEABLE
- JACK BOLT HOLES PROVIDED

## RIGHT GUARD

- COVERS MOST OF WINCH FRONT
- HANDLES FOR EASY REMOVAL
- RUBBER LATCHES TO SECURE
- POWDER COATED ALUMINUM
- CUSTOM LOGOS/COLORS OPTIONAL

## GEARING

- PRECISION MACHINED
- HEAT TREATED ALLOY STEEL
- NO WEAR AT 125% RATING TEST

## CABLE EXIT

- DUAL CABLE EXITS OUT EACH SIDE OF WINCH
- DRUM LOW TO DECK TO REDUCE EXIT HEIGHT

"The short answer is 'no.' The long answer is 'hell no.'"

—Louisiana Sen. John Kennedy



brtmarine.com

800-725-3787

PROUD  
DISTRIBUTOR OF  
**Wintech**  
WINCHES & FAIRLEADS

# DUAL DRUM DECK WINCH — HW SERIES

THE HW HARBOR TUG WINCH IS A DUAL DRUM DECK WINCH WITH CABLE EXITS FROM BOTH SIDES OF THE WINCH. THIS ALLOWS THIS WINCH TO BE TUCKED UP NEAR THE FRONT BULKHEAD WALL. CABLE CAN EXIT DIRECTLY TO THE DECK FITTING AND TO THE BARGE. SEE COMPAIRSION BELOW TO SEE HOW MUCH DECK SPACE IS GAINED.

## DECK SPACE COMPARISON



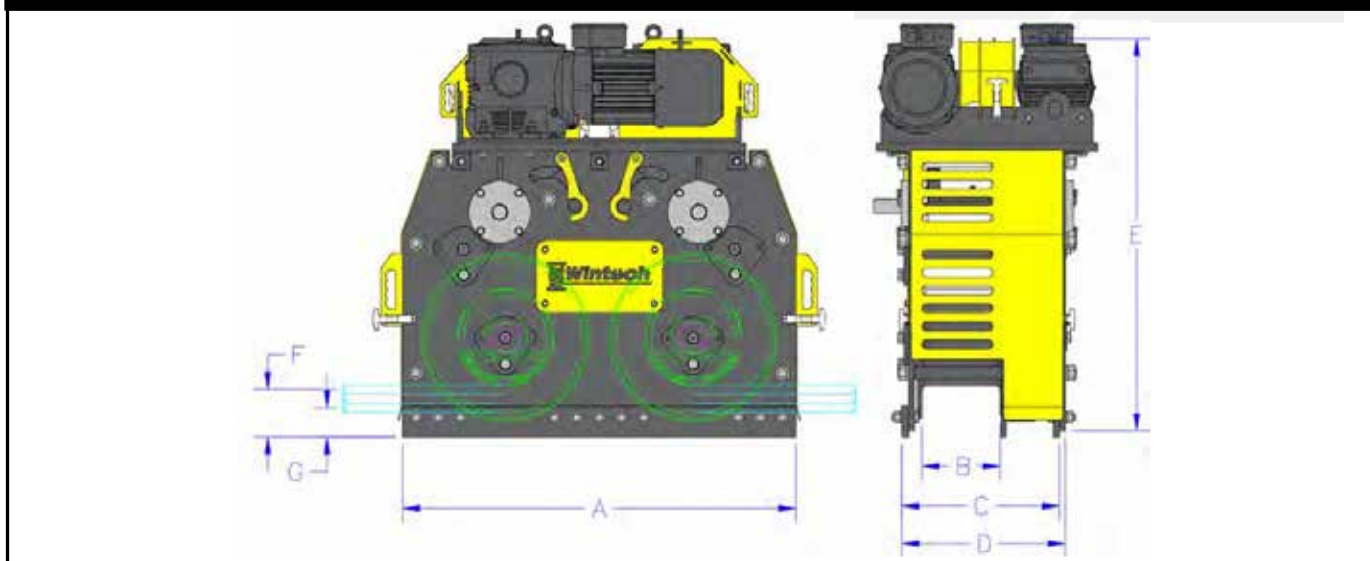
(1) HW DUAL DRUM HARBOR WINCH

VS.



(2) DW30 DECK WINCHES

## HW DIMENSION DRAWING



## HW PERFORMANCE CHART (PER DRUM)

MODEL	DOG HOLDING	BRAKE HOLDING	LINEPULL	STALL PULL	LINESPEED	HP
HW30-E5	60,000 LBS	44,000 LBS	9,000 LBS	28,000 LBS	18 FPM	5

PERFORMANCE SHOWN AT FIRST LAYER / CUSTOM LINEPULLS AND LINESPEEDS AVAILABLE

## HW DIMENSION CHART

MODEL	DRUM CORE	A	B	C	D	E	F	G	ROPE CAPACITY
HW30-E5	10-3/4"	44"	8-3/4"	17-5/8"	18-1/4"	44-1/2"	5-3/4"	2-3/4"	90' OF 1" 105' OF 7/8"



# THRU DECK CAPSTAN — CTD SERIES



## CAPSTAN PEGS

- 316 STAINLESS STEEL
- PRECISION MACHINED
- TAPERED FOR SECURE ROPE DOGGING
- THREADS DIRECTLY INTO CAPSTAN HEAD

## CAPSTAN HEAD

- PRECISION MACHINED
- TAPERED HEAD
- SMOOTH CORE TO EXTEND ROPE LIFE
- GRADUAL TOP/BOTTOM TRANSITION

## DIRECT DRIVE

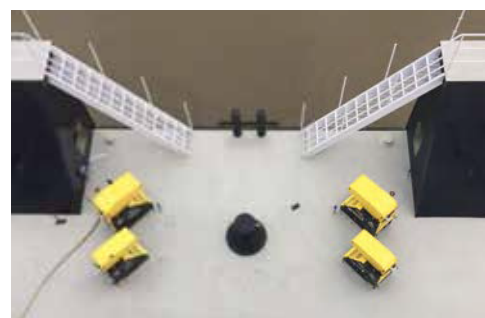
- GEARBOX DIRECTLY COUPLED TO HEAD
- NO EXTERNAL GEARING / WEAR ISSUES
- HEAD ROTATES ON SEALED BEARING
- HIGH BOLLARD PULL CAPACITY

## ANGLED BASE PLATE

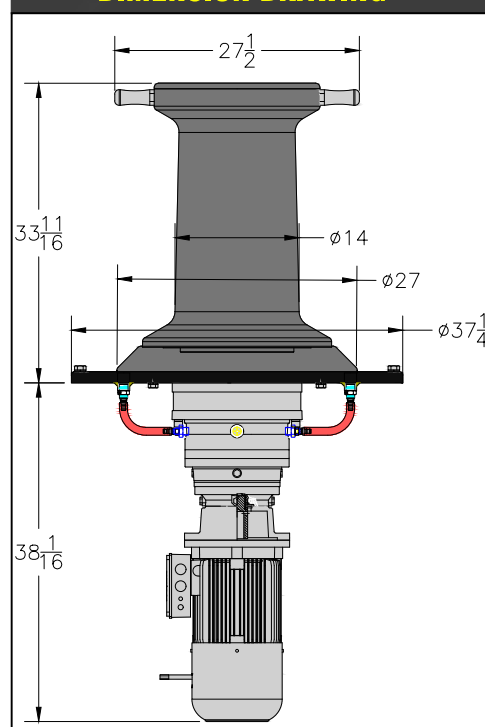
- PRECISION MACHINED
- ANGLE FORCES ROPE ONTO HEAD
- BOLT PATTERN TO MATCH EXISTING
- HEAD RECESSED INTO BASE

## GEARBOX/BRAKEMOTOR

- FULL ENCLOSED PLANETARY REDUCER
- OIL LEVEL/FILL ACCESS ABOVE DECK
- TENV MARINE DUTY IP66 MOTOR
- EPOXY DIPPED WINDINGS
- SEALED IP66 BRAKE
- 2 SPEED MOTOR AVAILABLE



## DIMENSION DRAWING



## PERFORMANCE CHART (LBS)

MODEL	BOLLARD	BRAKE HOLDING	LINEPULL	STALL PULL	LINESPEED	HP
CTD11000-25-2SPD	100,000	27,500	11,000 / 6,750	26,400 / 21,600	25/50	10
CTD12500-25	100,000	32,000	12,500	40,000	25	10

NOTE: CUSTOM LINEPULLS AND LINESPEEDS AVAILABLE

“When the Portland mayor’s IQ gets to 75, he oughta sell.”

—Louisiana Sen. John Kennedy



brtmarine.com

800-725-3787



# ABOVE DECK CAPSTAN — VCW SERIES

## MOTOR GUARD

- PROTECTS MOTOR / BRAKE
- BENT AND WELDED STEEL PLATE
- KEEPS TAIL END OF ROPE OFF DECK
- EASILY REMOVABLE

## SEALED MOTOR / BRAKE

- TENV MARINE DUTY IP66 RATED
- EPOXY DIPPED WINDINGS
- NO BRAKE ADJUSTMENT REQUIRED

## DIRECT DRIVE

- GEARBOX DIRECTLY COUPLED TO HEAD
- FULLY ENCLOSED HELICAL BEVEL REDUCER
- NO EXTERNAL GEARING / WEAR ISSUES
- PRECISION MACHINED COUPLING SHAFT



## CAPSTAN HEAD

- PRECISION MACHINED STEEL
- SMOOTH CORE TO EXTEND ROPE LIFE
- PROFILE BASED ON ASTM STANDARD
- HOLES FOR DOGGING PEGS (OPTIONAL)

## EXTERNAL BEARING

- SEALED / MAINTENANCE FREE
- REDUCES LOAD ON GEARBOX
- PROVIDES HIGH BOLLARD CAPACITY

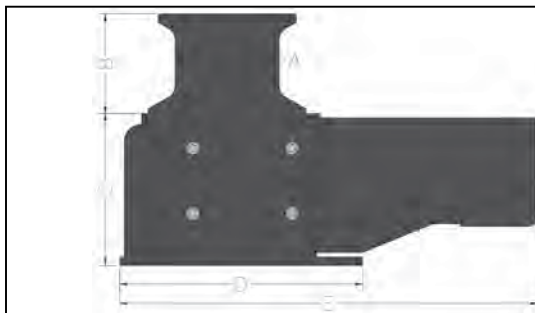
## FABRICATED BASE

- FULLY WELDED STEEL FRAME
- COMPLETELY HOUSES GEARBOX
- BOLT PATTERN PROVIDED
- INTEGRAL LIFTING LUGS

## PERFORMANCE CHART (LBS)

MODEL	BOLLARD	LINEPULL	STALL PULL	LINESPEED	HEAD SIZE	MAX ROPE SIZE	HP
VCW2500-35-7	20,000	2,500	6,500	35	7	1	3
VCW5000-30-9	30,000	5,000	15,500	30	9	1-1/2	5
VCW7000-25-9	30,000	7,000	19,250	25	9	1-1/2	5
VCW9500-25-12	30,000	9,500	26,125	25	12	2	7.5
VCW12500-25-12	60,000	12,500	40,000	25	12	2	10
VCW15000-20-12	60,000	15,000	48,000	20	12	2	10

NOTE: CUSTOM HEAD SIZES, LINEPULLS, AND LINESPEEDS AVAILABLE



## DIMENSION CHART (IN)

MODEL	A	B	C	D	E
VCW2500-35-7	7	7-3/8	11-1/16	17	32-1/4
VCW5000-30-9	9	8-3/4	15-1/2	24	43-5/8
VCW7000-25-9	9	8-3/4	15-1/2	24	43-5/8
VCW9500-25-12	12	11-9/16	17-1/2	28	48-3/16
VCW12500-25-12	12	11-9/16	20-1/4	32	54-5/8
VCW15000-20-12	12	11-9/16	20-1/4	32	54-5/8

“She has a billy goat brain and a mockingbird mouth!”

—Louisiana Sen. John Kennedy

# DAVIT CRANE — DC SERIES

## EXTENDABLE BOOM

- ADJUSTABLE FROM 6' TO 10' REACH
- 1 FOOT INCREMENTAL ADJUSTMENTS
- STAINLESS STEEL KEEPER PIN

## BOOM SUPPORT

- PROVIDES RIGID STRUCTURE FRAME
- VARIOUS LENGTHS AVAILABLE
- ADJUSTABLE RATCHET OPTIONAL

## RIGGING

- JOHNSON HOOK BLOCK PROVIDED
- INCLUDES STAINLESS STEEL CABLE

## SINGLE MAST

- NO AUXILIARY SUPPORTS REQUIRED
- BOLT DOWN OR WELD DOWN BASE
- WIDE FOOTPRINT TO SPREAD DECK LOAD



## MARINE DUTY PAINT

- MARINE PRIMER
- TWO PART URETHANE TOP COAT
- GALVANIZED FINISH OPTIONAL

## STEEL SHEAVES

- PRECISION MACHINED
- POWDER COATED
- SEALED/MAINTENANCE FREE BEARINGS
- STAINLESS STEEL SHAFTS

## WINTECH WK WINCH

- FULLY ENCLOSED WORM DRIVE
- 1HP TEFC 3 PHASE ELECTRIC MOTOR
- 115/1/60 POWER (3 PHASE OPTIONAL)
- INTEGRAL INVERTER AND CONTROLS
- PENDANT CONTROL FOR RAISE/LOWER
- MANUAL WINCH MODELS AVAILABLE

## FULL ROTATION

- 360 DEGREE ROTATION
- HANDLE PROVIDED FOR CONTROL
- ROTATION LOCK EVERY 36 DEGREES

## PERFORMANCE CHART

MODEL	CAPACITY	LIFT SPEED (FPM)	REACH	POWER SUPPLY	ROTATION	HP
DC2000	2,000	10	6'-10'	115/1/60	360	1

NOTE: CUSTOM REACH AND CAPACITIES AVAILABLE, "-G" ADDED ON MODEL DESIGNATES GALVANIZED FINISH

"I trust most middle eastern countries as much as gas station sushi."

—Louisiana Sen. John Kennedy



brtmarine.com

800-725-3787





# SWIVEL HEAD FAIRLEAD — BHF/SHF SERIES

## TYPICAL APPLICATIONS

- DOCK SIDE BARGE AND VESSEL MOORING
- BARGE AND VESSEL MOORING AND ANCHORING
- BARGE MOVING SYSTEM CABLE ROUTING/ALIGNMENT

## STANDARD FEATURES

- BALANCED HEAD OR DUAL SHEAVE HEAD DESIGN
- PATENTED SEALED SINGLE SLEWING BEARING DESIGN
- BEARING ALLOWS SHEAVE HEAD TO ROTATE 360 DEGREES
- PRECISION MACHINED 1045 STEEL SHEAVES
- SEALED SPHERICAL ROLLER BEARINGS UTILIZED IN SHEAVE
- HEAVY DUTY WELDED STEEL FRAME W/BOLT DOWN BASE
- THREE ROLLER FAIRLEAD INCORPORATED IN FRAME
- SEALED BALL BEARINGS UTILIZED IN ROLLERS
- STAINLESS STEEL SHAFTS AND HARDWARE

## PATENTED BENEFITS

- US PATENT #US10053327B2
- SINGLE SLEWING BEARING ALLOWS FOR COMPACT FOOTPRINT
- CABLE EYE CAN BE ROUTED THROUGH FAIRLEAD
- THREE ROLLER FAIRLEAD REDUCES CABLE WEAR AT ENTRANCE
- DUAL SHEAVE HEADS AVAILABLE FOR VARYING ENTRANCE/EXIT
- ACCURATE LOAD MONITORING REGARDLESS OF EXIT ANGLE

## OPTIONAL FEATURES

- HORIZONTAL TURN SHEAVE BUILT INTO FRAME
- DUAL HEAD DESIGN FOR ENTRANCE AND EXIT SWIVEL
- DIGITAL LOAD MONITORING SYSTEM
- NYLATRON SHEAVES OR ROLLERS FOR SYNTHETIC ROPE
- CUSTOM SIZES AND CONFIGURATIONS



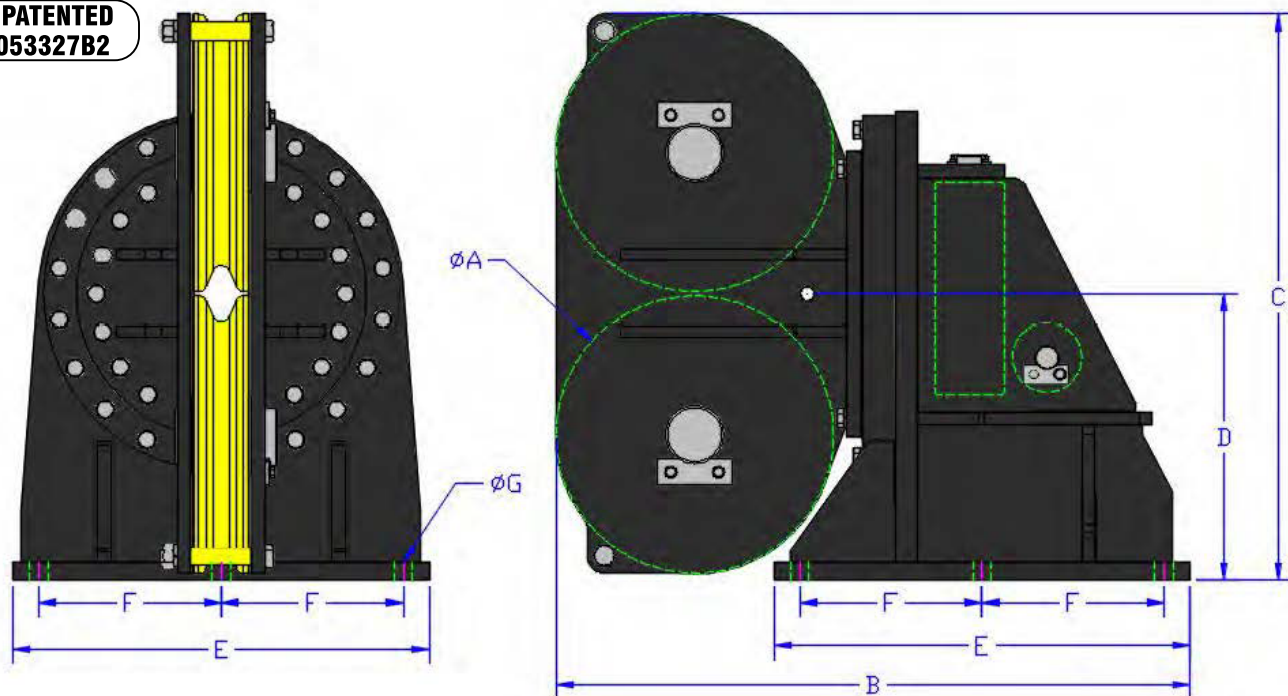
“You can get a goat to climb a tree, but you’d be better off hiring a squirrel.”

—Louisiana Sen. John Kennedy

# SWIVEL HEAD FAIRLEAD — BHF/SHF SERIES

## DIMENSION DRAWING

DESIGN PATENTED  
#US10053327B2



## SHF SERIES SWIVEL HEAD FAIRLEAD

SHF MODEL	BHF MODEL	MAX ROPE	SHEAVE (A)	B	C	D	E	F	G
SHF10-0.625	BHF10-0.625	5/8"	10"	26-3/8"	23-3/4"	12-3/4"	18"	7-1/2"	13/16"
SHF12-0.75-SB	BHF12-0.75-SB	3/4"	12"	28-3/8"	24-7/8"	12-3/4"	18"	7-1/2"	13/16"
SHF12-0.75-MB	BHF12-0.75-MB	3/4"	12"	32-1/4"	30"	16-1/2"	24"	10-1/2"	1-1/16"
SHF14-0.875	BHF14-0.875	7/8"	14"	34-1/4"	30-5/8"	16-1/2"	24"	10-1/2"	1-1/16"
SHF16-1	BHF16-1	1"	16"	36-1/2"	32-5/8"	16-1/2"	24"	10-1/2"	1-1/16"
SHF16-1.125	BHF16-1.125	1-1/8"	16"	36-1/2"	32-5/8"	16-1/2"	24"	10-1/2"	1-1/16"
SHF16-1.25-MB	BHF16-1.25-MB	1-1/4"	16"	36-1/2"	32-5/8"	16-1/2"	24"	10-1/2"	1-1/16"
SHF16-1.25-LB	BHF16-1.25-LB	1-1/4"	16"	41"	35-1/4"	18-1/2"	28"	12"	1-3/8"
SHF18-1.5	BHF18-1.5	1-1/2"	18"	43"	36-5/8"	18-1/2"	28"	12"	1-3/8"

CUSTOM OPTIONS AVAILABLE: HORIZONTAL SHEAVE FOR CABLE ENTRANCE, DUAL SWIVEL HEADS, AND/OR LOAD MONITORING

"This has been going on since Moby Dick was a minnow."

—Louisiana Sen. John Kennedy



brtmarine.com

800-725-3787



# HORIZONTAL FAIRLEAD — HF SERIES

## TYPICAL APPLICATIONS

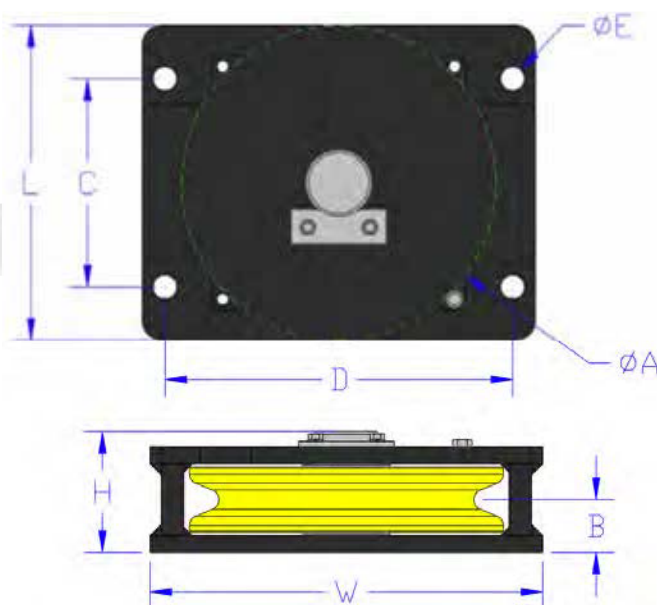
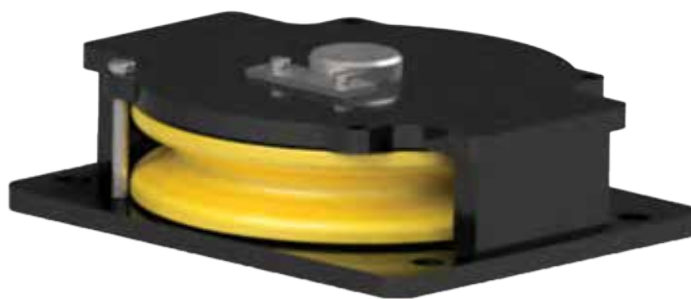
- CABLE ROUTING AND RIGGING TO LOAD
- BARGE POSITIONING CABLE ALIGNMENT
- FLEETING ANGLE ALIGNMENT TO WINCH

## STANDARD FEATURES

- ALLOY STEEL PRECISION MACHINED SHEAVE
- LARGE ROOT DIAMETER TO CABLE DIAMETER FOR CABLE LIFE
- HIGH LOAD SEALED ROLLER BEARINGS IN SHEAVE
- HEAVY DUTY WELDED BOX FRAME CONSTRUCTION
- ALLOY STEEL SHAFTS WITH STAINLESS KEEPER TABS
- KEEPER PIN TO KEEP ROPE SECURE IN SHEAVE GROOVE

## OPTIONAL FEATURES

- NYLATRON SHEAVES FOR USE WITH SYNTHETIC ROPE
- CUSTOM SIZES, CONFIGURATIONS, AND GROOVE DIAMETERS
- SYNTHETIC OR BRONZE BUSHINGS



**HF SERIES HORIZONTAL FAIRLEAD**

HF MODEL	MAX ROPE	SHEAVE DIA (A)	W	L	H	B	C	D	E
HF10	5/8"	10"	13"	10"	4"	1-11/16"	6-1/2"	11-3/8"	13/16"
HF12	3/4"	12"	15"	12"	4-13/16"	2-1/16"	7-1/16"	13-1/4"	15/16"
HF14	7/8"	14"	17-1/2"	14"	5-3/8"	2-3/8"	9-1/4"	15-1/2"	1-1/16"
HF16	1"	16"	20"	16"	5-15/16"	2-5/8"	10-1/2"	17-3/4"	1-3/16"
HF18	1-1/8"	18"	22"	18"	7-1/8"	3-1/4"	12-1/2"	19-3/4"	1-3/16"

"Never stand between a dog and a fire hydrant."

—Louisiana Sen. John Kennedy



# DUAL HORIZONTAL FAIRLEAD — DHF SERIES

## TYPICAL APPLICATIONS

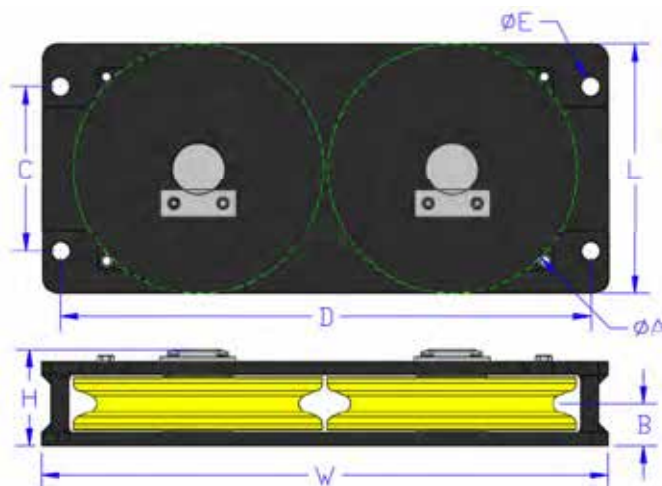
- CABLE ROUTING AND RIGGING TO LOAD
- BARGE POSITIONING CABLE ALIGNMENT
- FLEETING ANGLE ALIGNMENT TO WINCH

## STANDARD FEATURES

- ALLOY STEEL PRECISION MACHINED SHEAVES
- DUAL SHEAVES ALLOW FOR 180 DEGREE CABLE EXIT
- LARGE ROOT DIAMETER TO CABLE DIAMETER FOR CABLE LIFE
- HIGH LOAD SEALED ROLLER BEARINGS IN SHEAVE
- HEAVY DUTY WELDED BOX FRAME CONSTRUCTION
- ALLOY STEEL SHAFTS WITH STAINLESS KEEPER TABS
- KEEPER PIN TO KEEP ROPE SECURE IN SHEAVE GROOVE
- FAIRLEAD CAN BE BOLTED OR WELDED DOWN

## OPTIONAL FEATURES

- NYLATRON SHEAVES FOR USE WITH SYNTHETIC ROPE
- CUSTOM SIZES AND GROOVE DIAMETERS
- SYNTHETIC OR BRONZE BUSHINGS
- OPENING TO FEED EYE/SOCKET OF ROPE THROUGH FAIRLEAD
- CUSTOM WRAP AND EXIT ANGLES



**DHF SERIES HORIZONTAL FAIRLEAD**

DHF MODEL	MAX ROPE	SHEAVE DIA (A)	W	L	H	B	C	D	E
DHF10	5/8"	10"	23-1/4"	10"	4"	1-11/16"	6-1/2"	21-5/8"	13/16"
DHF12	3/4"	12"	27-1/4"	12"	4-13/16"	2-1/16"	7-1/16"	25-1/2"	15/16"
DHF14	7/8"	14"	31-3/4"	14"	5-3/8"	2-3/8"	9-1/4"	29-3/4"	1-1/16"
DHF16	1"	16"	36-1/2"	16"	5-15/16"	2-5/8"	10-1/2"	34"	1-3/16"
DHF18	1-1/8"	18"	40-1/4"	18"	7-1/8"	3-1/4"	12-1/2"	38"	1-3/16"

"Our country was founded by geniuses, but it's being run by idiots."

—Louisiana Sen. John Kennedy



brtmarine.com

800-725-3787

PROUD  
DISTRIBUTOR OF  
**Wintech**  
WINCHES & FAIRLEADS

# VERTICAL FAIRLEAD — VF SERIES

## TYPICAL APPLICATIONS

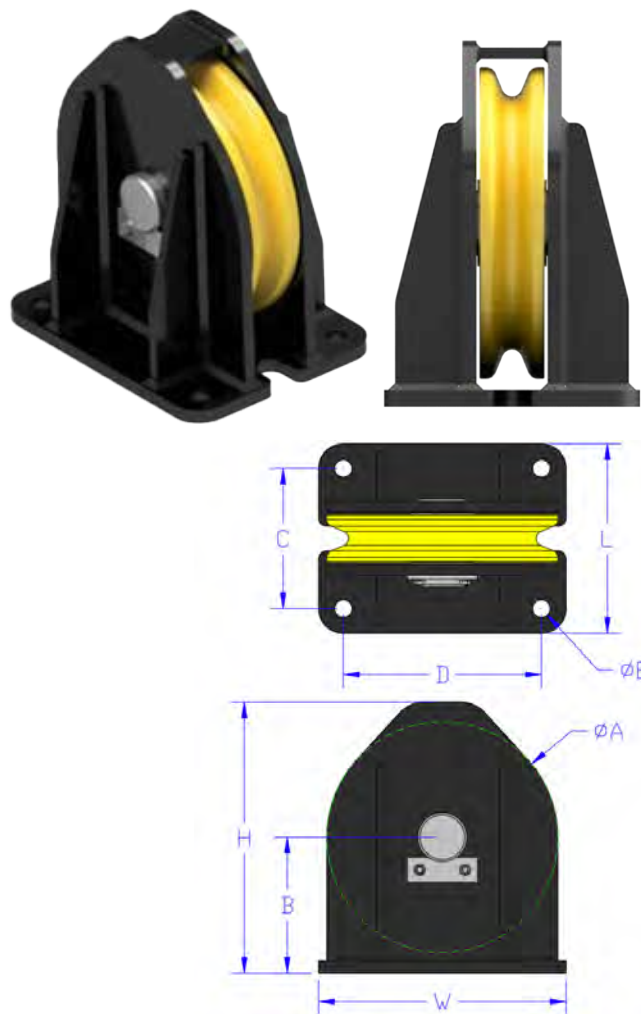
- CABLE ROUTING AND RIGGING TO LOAD
- RAMP LIFTING AND POSITIONING
- FLEETING ANGLE ALIGNMENT TO WINCH

## STANDARD FEATURES

- ALLOY STEEL PRECISION MACHINED SHEAVE
- LARGE ROOT DIAMETER TO CABLE DIAMETER FOR CABLE LIFE
- HIGH LOAD SEALED ROLLER BEARINGS IN SHEAVE
- HEAVY DUTY WELDED BOX FRAME CONSTRUCTION
- ALLOY STEEL SHAFTS WITH STAINLESS KEEPER TABS
- KEEPER PIN TO KEEP ROPE SECURE IN SHEAVE GROOVE
- FRAME SHAPED TO ALLOW CABLE EXIT DIRECTLY DOWN
- FAIRLEAD CAN BE BOLTED OR WELDED DOWN

## OPTIONAL FEATURES

- NYLATRON SHEAVES FOR USE WITH SYNTHETIC ROPE
- CUSTOM SIZES, CONFIGURATIONS, AND GROOVE DIAMETERS
- SYNTHETIC OR BRONZE BUSHINGS
- CUSTOM WRAP AND EXIT ANGLES
- MULTIPLE SHEAVE CONFIGURATIONS AVAILABLE



VF SERIES VERTICAL FAIRLEAD

VF MODEL	MAX ROPE	SHEAVE DIA (A)	W	L	H	B	C	D	E
VF10	5/8"	10"	11"	10-1/2"	12-3/16"	1-11/16"	7-1/2"	8"	15/16"
VF12	3/4"	12"	13"	11"	14-5/16"	2-1/16"	8"	10"	1-1/16"
VF14	7/8"	14"	15"	11-1/2"	16-7/16"	2-3/8"	8-1/2"	12"	1-1/16"
VF16	1"	16"	17"	12"	18-1/2"	2-5/8"	8-3/4"	13-3/4"	1-3/16"
VF18	1-1/8"	18"	19"	13"	20-5/8"	3-1/4"	9-3/4"	15-3/4"	1-3/16"

"It appears that he might do the right thing, but only when closely supervised and cornered like a rat."

—Louisiana Sen. John Kennedy

# HI-LO ROLLER BUTTON — HL SERIES

## TYPICAL APPLICATIONS

- INLAND RIVER TOWBOAT HEAD/WING ROPE RIGGING
- BARGE AND VESSEL MOORING AND ANCHORING

## STANDARD FEATURES

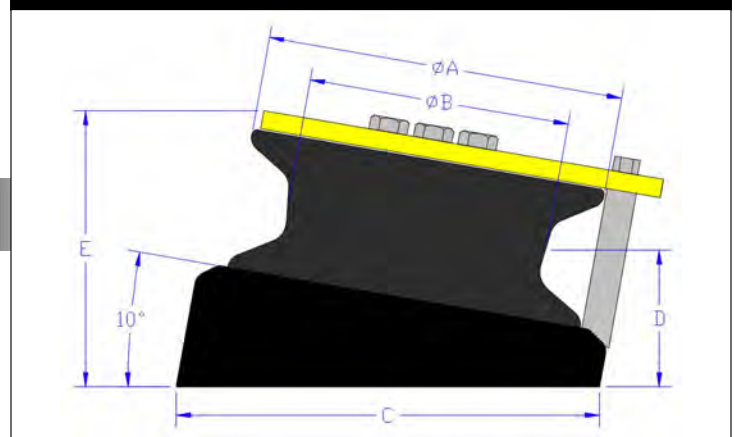
- EXTRA WIDE ANGLE SHEAVE DESIGN
- ALLOWS FOR -5 TO 25 CABLE EXIT FROM HORIZONTAL
- ACCOMODATES FOR EMPTY AND LOADED BARGES
- NYLATRON OR STEEL SHEAVE AVAILABLE
- GREASABLE BRONZE BUSHINGS UTILIZED IN SHEAVE
- LARGE DIAMETER ALLOY STEEL PIVOT SHAFT
- POWDER COATED STEEL KEEPER PLATE
- STAINLESS STEEL KEEPER ROD AND HARDWARE
- ROPE HELD CAPTIVE IN SHEAVE BY KEEPER PLATE/ROD
- NO HOT WORK REQUIRED FOR SHEAVE REPLACEMENT
- HEAVY DUTY WELDED STEEL BASE AND SHAFT
- COUNTOURED BASE TO ASSIST ROPE INTO SHEAVE
- SHEAVE RECESSED IN BASE TO ELIMINATE PINCH POINTS

## OPTIONAL FEATURES

- CUSTOM COLOR POWDER COATED KEEPER PLATES
- CUSTOM SIZES AND CONFIGURATIONS
- BOLT DOWN BASE
- STAINLESS STEEL SHEAVE



**DIMENSION DRAWING**



**HL SERIES HI-LO ROLLER BUTTON**

MODEL	SHEAVE	LOAD CAPACITY	MAX ROPE	SHEAVE (A)	B	C	D	E	WEIGHT
HL12-40	NYLATRON	80,000 LBS	1-1/4"	12"	8-3/4"	14-3/16"	4-11/16"	9-7/16"	125 LBS
HL12-40S	STEEL	80,000 LBS	1-1/4"	12"	8-3/4"	14-3/16"	4-11/16"	9-7/16"	175 LBS
HL16-65	NYLATRON	130,000 LBS	1-1/2"	16"	12-5/8"	18-1/4"	4-11/16"	10-1/8"	210 LBS
HL16-65S	STEEL	130,000 LBS	1-1/2"	16"	12-5/8"	18-1/4"	4-11/16"	10-1/8"	260 LBS

"Dumb enough to be a twin of himself."

—Louisiana Sen. John Kennedy



brtmarine.com

800-725-3787



# ROLLER BUTTON — RB SERIES

## TYPICAL APPLICATIONS

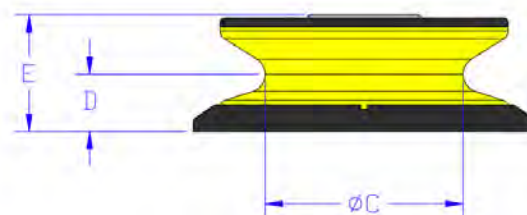
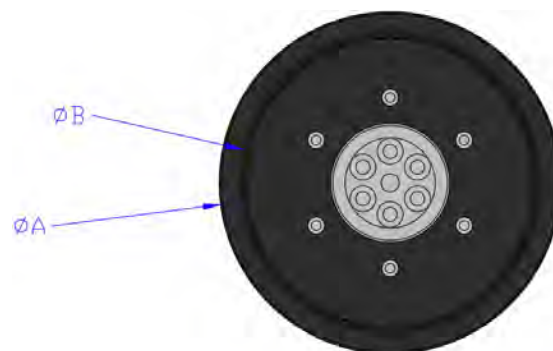
- TOW BOAT FACE AND WING ROPE RIGGING
- DOCK SIDE BARGE MOORING APPLICATIONS
- DEFLECTION AND ALIGNMENT OF SYNTHETIC ROPE

## STANDARD FEATURES

- WIDE ANGLE SHEAVE DESIGN
- ALLOWS FOR LOAD ANGLE CHANGE
- NYLATRON OR STEEL SHEAVE
- LARGE DIAMETER ALLOY STEEL SHAFT
- STAINLESS STEEL CAP AND HARDWARE
- NO HOT WORK FOR SHEAVE REPLACEMENT
- GREASABLE BRONZE BUSHING
- WELDED STEEL BASE AND SHAFT
- CONTOURED BASE TO ASSIST ROPE
- SHEAVE RECESSED FOR NO PINCH POINTS

## OPTIONAL FEATURES

- CUSTOM SIZES AND GROOVE DIAMETERS
- SYNTHETIC OR SEALED BEARINGS
- BOLT DOWN BASE
- STAINLESS STEEL SHEAVE
- PEDESTAL TO RAISE ENTRY HEIGHT



RB SERIES ROLLER BUTTON

RB MODEL	CAPACITY	MAX ROPE	SHEAVE DIAM	A	B	C	D	E	WEIGHT
RB12-40	80,000	1-1/4"	12"	15"	12"	7"	3-3/16"	6-5/16"	85 LBS
RB12-40-STEEL	80,000	1-1/4"	12"	15"	12"	7"	3-3/16"	6-5/16"	135 LBS
RB16-65	130,000	1-1/2"	16"	19"	16"	11"	3-3/16"	6-1/2"	170 LBS
RB16-65-STEEL	130,000	1-1/2"	16"	19"	16"	11"	3-5/16"	6-1/2"	220LBS

"This is why space aliens won't talk to us."

—Louisiana Sen. John Kennedy



# ROLLER CHOCK — RC SERIES

## TYPICAL APPLICATIONS

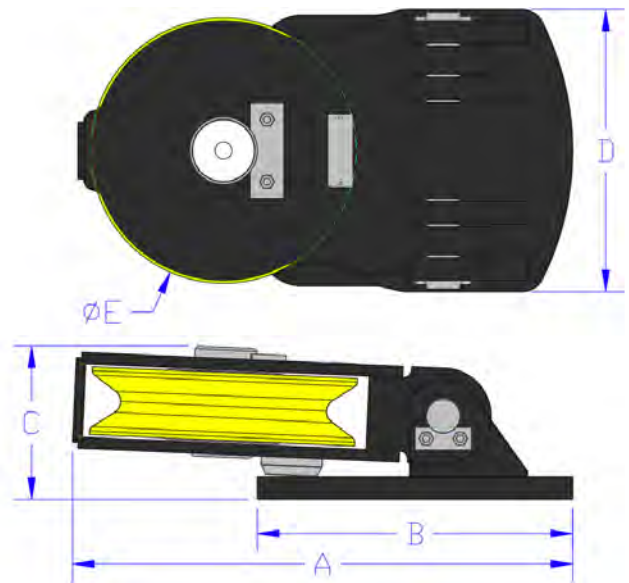
- TOW BOAT FACE AND WING ROPE RIGGING
- DOCK SIDE BARGE MOORING APPLICATIONS
- DEFLECTION AND ALIGNMENT OF SYNTHETIC ROPE

## STANDARD FEATURES

- SELF-FLEETING PIVOT DESIGN
- ALLOWS FOR WIDE LOAD ANGLE CHANGE
- NYLATRON OR STEEL SHEAVE
- DUAL REAR PIVOT PINS
- STAINLESS STEEL PINS AND HARDWARE
- NO HOT WORK FOR SHEAVE REPLACEMENT
- GREASEABLE BRONZE BUSHINGS
- WELDED STEEL UPPER FRAME AND BASE
- CONTOURED REAR ROPE GUARD
- RUBBER BUMPER FOR REDUCED SHOCK

## OPTIONAL FEATURES

- CUSTOM SIZES AND GROOVE DIAMETERS
- SYNTHETIC OR SEALED BEARINGS
- BOLT DOWN BASE
- STAINLESS STEEL SHEAVE



RC SERIES ROLLER CHOCK

RC MODEL	CAPACITY	MAX ROPE	SHEAVE DIAM	A	B	C	D	E	WEIGHT
RC10-40	80,000	1-1/8"	10"	19-5/8"	13-1/4"	6-1/4"	11-1/4"	10"	115 LBS
RC10-40-STEEL	80,000	1-1/8"	10"	19-5/8"	13-1/4"	6-1/4"	11-1/4"	10"	165 LBS
RB16-65	130,000	1-1/4"	12"	21-15/16"	14"	16-13/16"	12-1/2"	12"	145 LBS
RB16-65-STEEL	130,000	1-1/4"	12"	21-15/16"	14"	16-13/16"	12-1/2"	12"	195 LBS

"What planet did you parachute in from?"

—Louisiana Sen. John Kennedy



brtmarine.com

800-725-3787



# BOAT EQUIPMENT RECOMMENDATIONS

BOAT HP	FACING WINCH	WING WINCH	CAPSTAN	DECK FITTINGS	DAVIT
0-1,200 HP	DW30-E5		VCW5000-30-9 VCW7000-25-9	HL12-40 RC10-40 RB12-40	DC2000
1,200-4,000 HP	DW40-E7.5	DW40-E7.5 DW65-E7.5 (DEPENDS ON ROPE SIZE)	VCW9500-25-12	HL12-40 RC10-40 RB12-40	DC2000
4,000-12,500 HP	DW65-E7.5	DW65-E7.5	CTD12500-25 VCW12500-25-12	HL16-65 RC12-65 RB16-65	DC2000



# 20HL-E1 HARBOR TUG WINCH

## Description:

The 20HL-E1 Harbor Tug Winch was designed specifically for small pushboats and harbor tugs to save time in making up tows. The entire winch is designed with only 3 bushings, resulting in reduced maintenance and more up time.

## Standard Features:

- 5 Horsepower TEFC Motor and Brake
- 230/460 Volt - 3 Phase - 60 Hz Power
- Spring set - Electric release holding brake
- Fully enclosed gearbox with open final gear set
- Machine cut gearing with protective guarding
- Brake release and manual crank for emergency operation

## Performance:

Brake Holding Capacity	20 Tons
Rated Continuous Linepull	6,000 lbs
Rated Stall Linepull	16,500 lbs
Mid Drum Linespeed	30 FPM



Drum Capacity			
5/8"	3/4"	7/8"	1"
380 ft	275 ft	194 ft	132 ft

## Dimensions and Weight:

Overall Length	32-1/2"
Overall Width	26-1/2"
Overall Height	23-1/2"
Overall with Deck Pivot Pin	875 lbs

*Due to our policy of continuing development, all specifications are subject to change without notice. Users of these products are responsible for ensuring their suitability for the application in which they are being used.*

"Just because you can sing doesn't mean you should."

—Louisiana Sen. John Kennedy



[brtmarine.com](http://brtmarine.com)

800-725-3787

PROUD  
DISTRIBUTOR OF  
**Wintech**  
WINCHES & FAIRLEADS

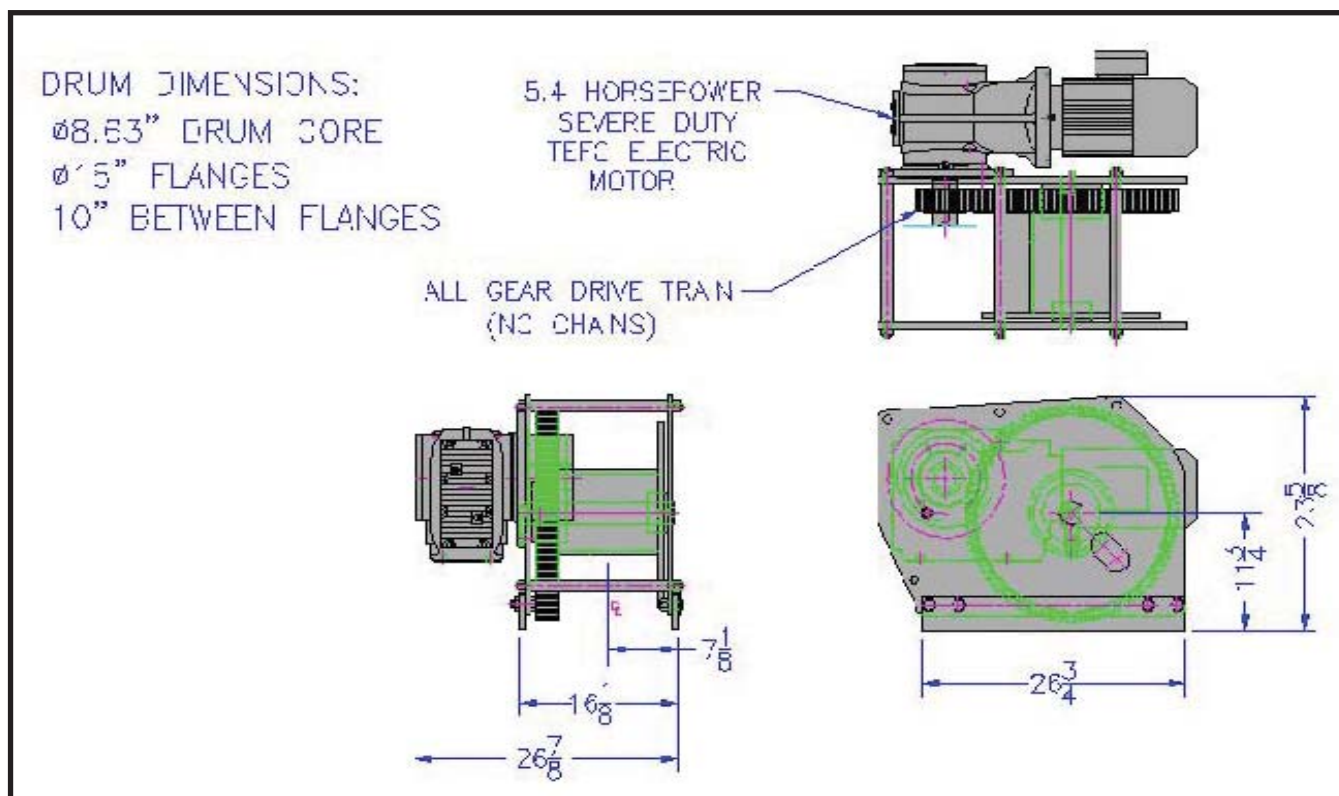


# 30HL-E1 ELECTRIC DECK WINCH

## Standard Features:

- 30 Ton Holding Capacity / 10,000 lb Line Pull on 1st Layer
- 23 fpm Mid-Drum Line Speed
- 5.4HP Severe Duty TEFC Electric Motor with Holding Brake
- Helical Bevel Gear Reducer with Final Spur Gear Reduction
- Removable Steel Hood Covers the entire drum
- Manual hand crank for emergency operation

Drum Capacity			
5/8"	3/4"	7/8"	1"
380 ft	275 ft	194 ft	132 ft



*Due to our policy of continuing development, all specifications are subject to change without notice. Users of these products are responsible for ensuring their suitability for the application in which they are being used.*



# 40HL-E2 ELECTRIC DECK WINCH

## Standard Features:

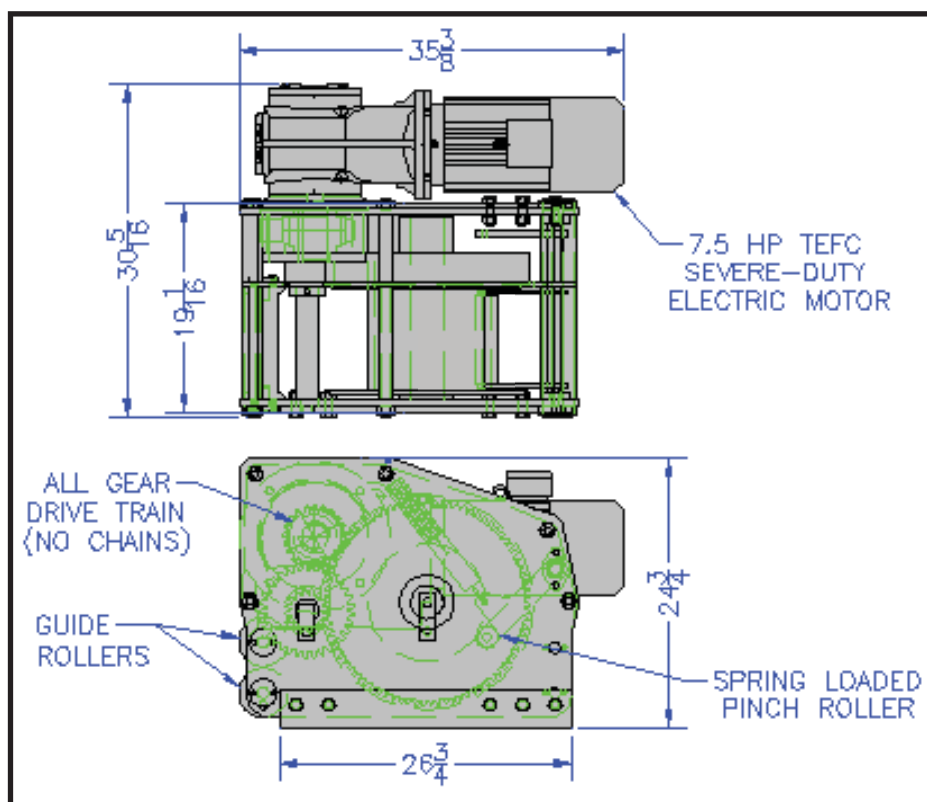
- 40 Ton Holding Capacity / 13800 lbs Line Pull at 18 fpm
- Pinch-Roller System Dramatically Reduces Cable Backlash
- 7.5 HP Severe Duty TEFC Electric with Holding Brake
- Helical Bevel Gear Reducer with Final Spur Gear Reduction
- Drum accepts standard wedges for cable attachment
- Removable Steel Hood Covers the entire drum
- Nylatron Guide Rollers reduce cable wear



40HR-30-10

Drum Capacity			
5/8"	3/4"	7/8"	1"
286 ft	196 ft	130 ft	116 ft

Other Drum Lengths / Cable Capacities are Available Upon Request



Due to our policy of continuing development, all specifications are subject to change without notice. Users of these products are responsible for ensuring their suitability for the application in which they are being used.

"The power to tax is the power to destroy."

—John Marshall



brtmarine.com

800-725-3787

PROUD  
DISTRIBUTOR OF  
**Wintech**  
WINCHES & FAIRLEADS

# ELECTRIC LOW-PROFILE BARGE WINCH

## Standard Features:

- Totally enclosed, marine grade, fully reversing crane and hoist duty motors in 220V, 440V, and 575V
- Winch stall pulls from 11,000 to over 50,000 lbs
- Winch electric brake and worm drive gear holds from 46,000 to 111,000 lbs
- Flame-cut precision machined side frames
- Enclosed drive gearing
- Steel gear guard prevents slack cable from fouling gears
- Automatic disc brake
- Simple effective design reduces maintenance costs

## Options Available:

- Remote control packages for pilot house control NEMA 1; General purpose enclosure NEMA 4; Watertight (NEMA 1 or 4 magnetic reversing starter, NEMA 1 or 4 push button station)
- Wider drums (see wire rope storage chart for optional drum lengths)
- Slip clutch
- Drum divider flange
- Grooved drums
- Angle deck brackets
- Disengaging clutch and hand wheel for emergency power loss operation
- Dual winch, barge spotting system
- Special inquiries invited for mooring or terminal application
- Air and hydraulic models available upon request
- Cable installation



Low-Profile Electric Barge Winch Specifications											
Model No.	Dog Holding Capacity (Tons)	Capacity (lbs)		Holding (lbs)	Line Speed (fpm)			Volts	Weight		
		Rated Pull	Stall Pull *	Electric Brake	No Load	Rated Pull	HP	Phase Cycle	Net (lbs)	Ship (lbs)	Cu. Ft.
25HL-E1	40	4,000	11,000	20,000	34	31	5	230/460-3-60	700	720	22.0
25HL-E2	40	6,000	16,500	20,000	34	31	7.5	230/460-3-60	750	770	22.0
25HL-E3	40	8,000	22,000	20,000	34	31	10	230/460-3-60	800	825	22.0
50HL-E1	65	6,000	16,500	30,000	23	21	5	230/460-3-60	1225	1245	34.0
50HL-E2	65	9,000	24,800	30,000	23	21	7.5	230/460-3-60	1275	1295	34.0
50HL-E3	65	12,000	33,000	30,000	23	21	10	230/460-3-60	1325	1345	34.0
75HL-E1	90	9,300	25,600	40,000	14	13	5	230/460-3-60	1930	1930	37.0
75HL-E2	90	13,900	38,200	40,000	14	13	7.5	230/460-3-60	1980	2000	37.0
75HL-E3	90	18,500	50,900	40,000	14	13	10	230/460-3-60	2030	2030	37.0

Note: All models are shown with "L" designating left hand models. For right hand models substitute "R" for "L" in the Model Number.

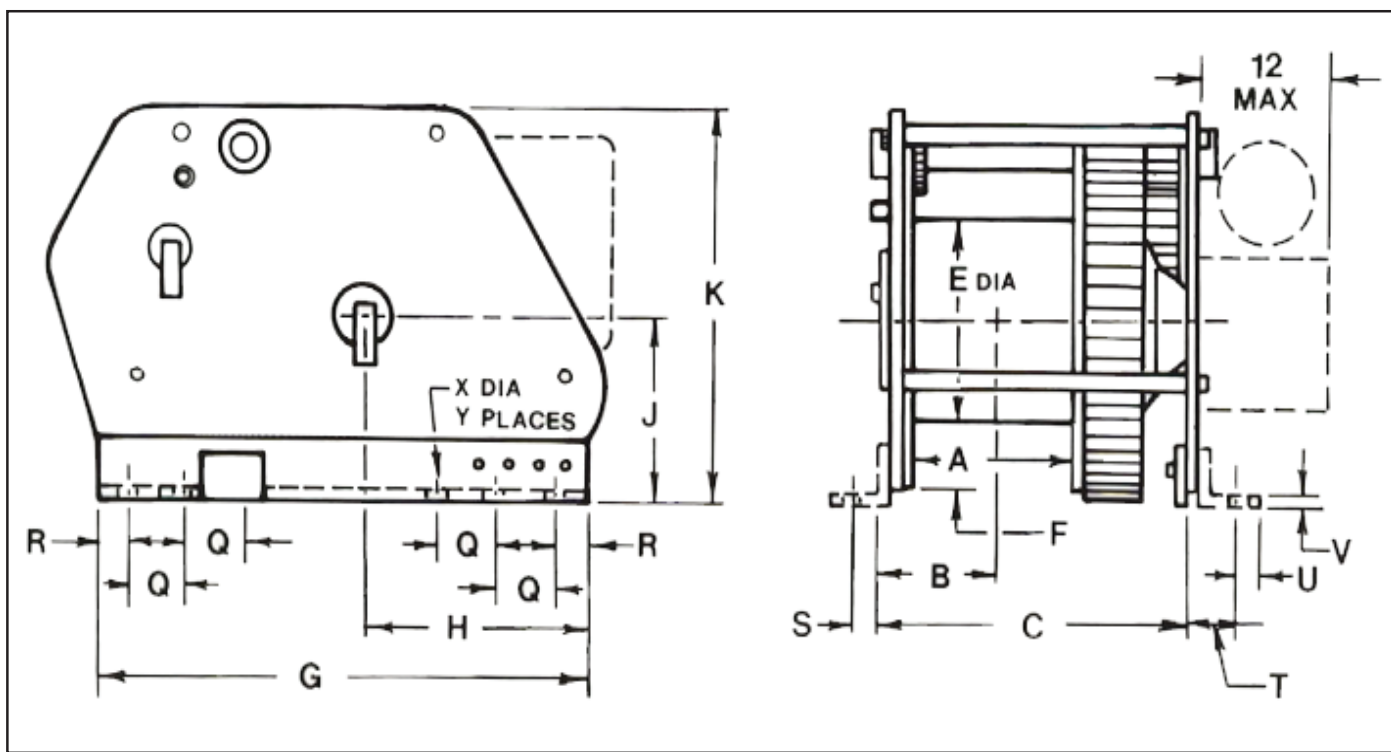
\* Stall pull rated at specific voltage with holding dog engaged.

BR

## Drum Lengths and Cable Capacities

25HL - 10 3/4" Drum Diameter					50HL - 12 3/4" Drum Diameter					75HL - 16" Drum Diameter				
Length (in.)*	Drum Capacity (ft)				Length (in.)*	Drum Capacity (ft)				Length (in.)*	Drum Capacity (ft)			
	5/8"	3/4"	7/8"	1"		7/8"	1"	1 1/8"	1 1/4"		1 1/8"	1 1/4"	1 3/8"	1 1/2"
9	248	162	142	88	11	194	174	110	100	10	119	108	98	56
17	479	314	277	174	20	377	338	216	197	19	247	225	207	119
34	975	643	568	359	41	773	694	445	408	40	523	478	441	254
51	1472	971	865	544	61	1168	1051	674	619	60	798	731	675	390
69	1969	1299	1151	729	82	1564	1407	903	830	81	1074	983	909	525

\* Standard drum lengths are rounded to the nearest inch.



Manual Low-Profile Barge Winch Dimensions																							
Capacity (US Tons)	Dimensions (in.)																						
	A	B	C	D	E	F	G	H	J	K	L	M	N	P	Q	R	S	T	U	V	W	X	Y
20HL	10	6 1/2	15 7/8	25 7/8	8 5/8	6	23	11 1/2	11 3/4	24	35	32	9 3/8	38	4	3/4	1	1	1	3/8	53 1/2	4/5	8
25HL	9	7 3/8	17 7/8	27 7/8	10 3/4	3 5/8	28	12 1/4	21	21	34 1/2	32	9 3/8	37 1/2	4	3	1	2 1/8	1	1/2	53 1/2	4/5	10
50HL	11	8	20 7/8	30 7/8	12 3/4	4 3/8	33	15	12	25	42 1/2	40	9 1/8	43	4	2	1 3/8	3	1 7/8	3/4	59 1/2	1 1/8	12
75HL	10	8 1/8	21 7/8	31 1/4	16	4 1/2	41	16 1/2	14	29	50 1/2	48	9	50 1/2	4	2	1 1/2	3 1/2	1 1/2	1	65 1/2	1 1/8	16

*Due to our policy of continuing development, all specifications are subject to change without notice. Users of these products are responsible for ensuring their suitability for the application in which they are being used.*



# STANDARD UPRIGHT BARGE WINCH

## Standard Features:

- Fully reversing crane and hoist duty motors that are totally enclosed
- Control from pilot house or deck
- Stall pulls up to 40,000 lbs
- Improved brake holding capacity up to 70,000 lbs
- Drum guard prevents slack cable from fouling gears
- Hand wheel for operation in the event of power loss

## Options Available:

- Flange mounted ball bearings for power shaft, factory installed
- Grooved drums
- Drum divider flange
- Remote control packages: NEMA 1 - General purpose enclosure or NEMA 4 - Watertight enclosure (NEMA 1 or 4 magnetic reversing starter or NEMA 1 or 4 push button station)
- Cable installation

**Warning:** Before installation see maintenance and operations manual for additional warnings and precautions. This equipment is not to be used for listing, supporting or transporting people, or lifting or supporting loads over people.



Standard Upright Barge Winch Specifications												
Model No.	Dog Holding Capacity (Tons)	Capacity (lbs)			Holding (lbs)	Line Speed (fpm)			Volts	Weight		
		Rated Pull	Stall Pull *	Hand Pull	Electric Brake	No Load	Rated Pull	HP	Phase Cycle	Net (lbs)	Ship (lbs)	Cu. Ft.
301L-RC	40	3,200	9,000	20,000	55,000	50	42	5	230/460-3-60	728	785	27.0
311L-RC	40	4,200	11,500	20,000	55,000	35	31	5	230/460-3-60	728	785	27.0
321L-RC	40	4,800	13,000	20,000	55,000	50	42	7.5	230/460-3-60	859	922	27.0
331L-RC	40	6,400	17,500	20,000	55,000	23	21	5	230/460-3-60	728	791	27.0
341L-RC	40	6,400	17,500	20,000	55,000	35	31	7.5	230/460-3-60	859	1038	27.0
351L-RC	40	8,500	23,500	20,000	55,000	17	15	5	230/460-3-60	728	1050	27.0
601L-RC	65	4,500	15,500	40,000	70,000	34	30	5	230/460-3-60	1290	1536	34.0
611L-RC	65	6,500	22,000	40,000	70,000	34	30	7.5	230/460-3-60	1331	1536	34.0
621L-RC	65	8,500	28,000	40,000	70,000	17	15	5	230/460-3-60	1331	1536	34.0
631L-RC	65	12,000	40,000	40,000	70,000	17	15	7.5	230/460-3-60	1361	1536	34.0
641L-RC	65	12,000	40,000	40,000	70,000	23	20	10	230/460-3-60	1361	1536	34.0

Note: All models are shown with "L" designating left hand models. For right hand models substitute "R" for "L" in the Model Number.

\* Stall pull rated at specific voltage with holding dog engaged.

"We are told that this is an odious and unpopular tax. I never knew a tax that was not odious and unpopular with the people who paid it."

—John Sherman

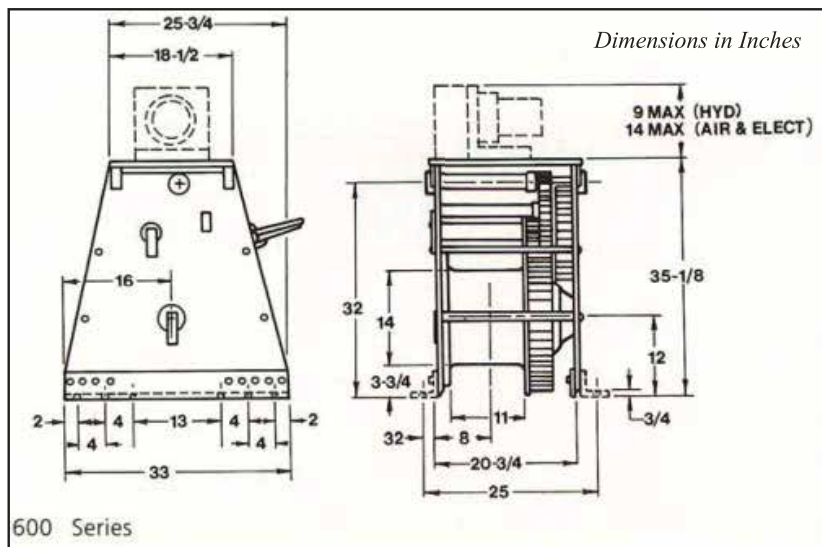
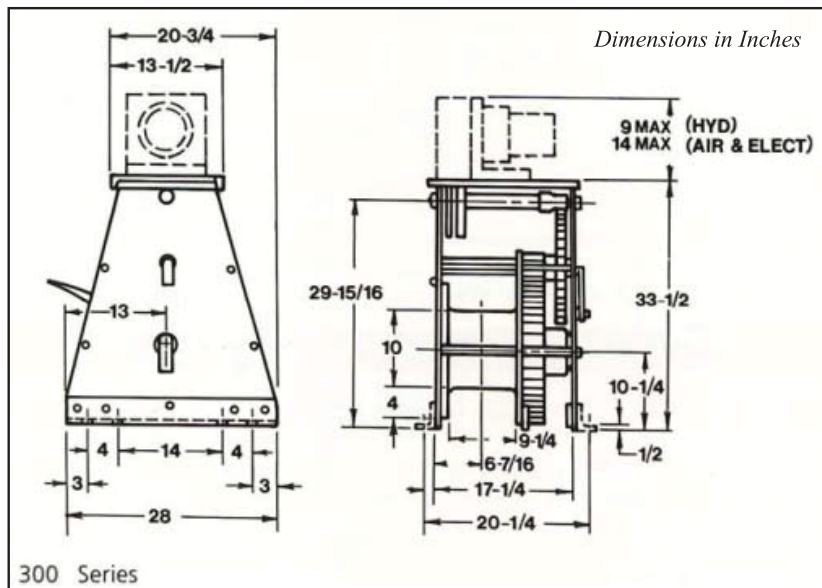


# STANDARD UPRIGHT BARGE WINCH

## Drum Lengths and Cable Capacities

300 Series (40 Ton) - 10" Drum Diameter					600 Series (65 Ton) - 14" Drum Diameter				
Length (in.)*	Drum Capacity (ft)				Length (in.)*	Drum Capacity (ft)			
	5/8"	3/4"	7/8"	1"		7/8"	1"	1 1/8"	1 1/4"
9	286	196	130	116	11	210	133	119	67
17	559	386	258	232	20	418	265	240	136
35	1174	813	546	493	41	834	531	481	274
51	1755	1216	818	740	61	1271	810	734	418
69	2336	1620	1090	986	82	1686	1075	975	556

\* Standard drum lengths are rounded to the nearest inch.



Due to our policy of continuing development, all specifications are subject to change without notice. Users of these products are responsible for ensuring their suitability for the application in which they are being used.



brtmarine.com

800-725-3787

PROUD  
DISTRIBUTOR OF  
**Wintech**  
WINCHES & FAIRLEADS





1172 Camp Street, New Orleans, LA 70130  
 800-725-3787 | 504-525-7137  
[www.BRTMarine.com](http://www.BRTMarine.com)