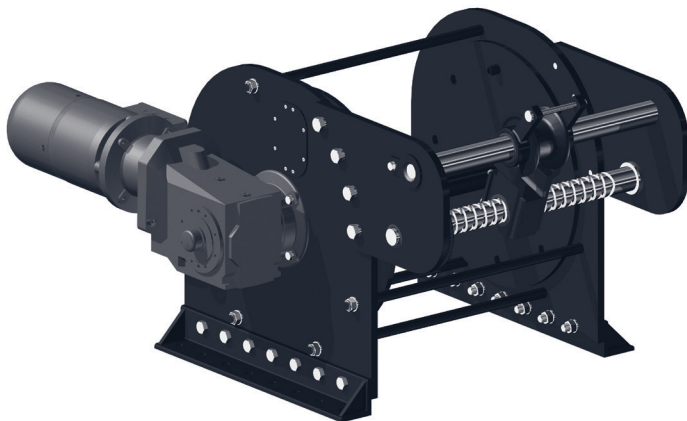
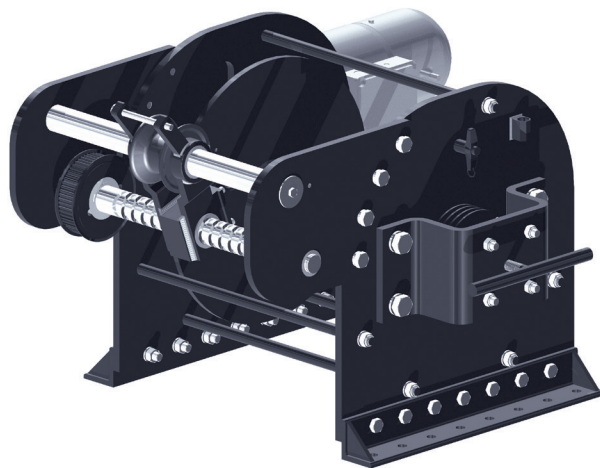


THE RIGHT CHOICE WHEN YOU NEED TO

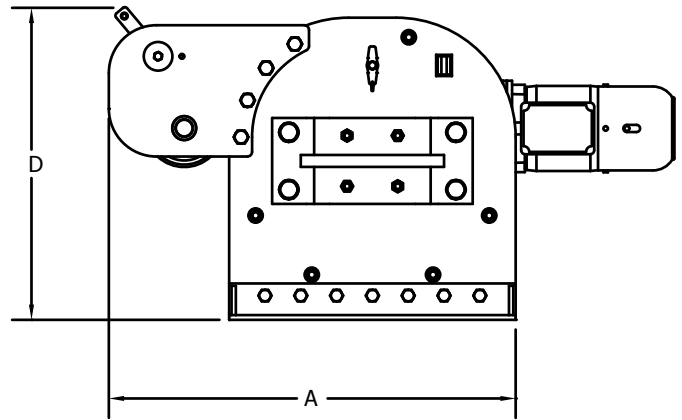
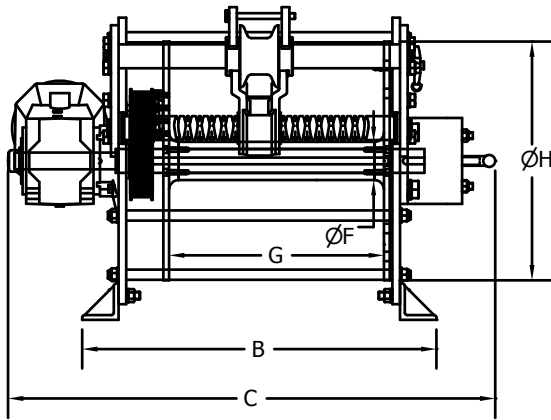
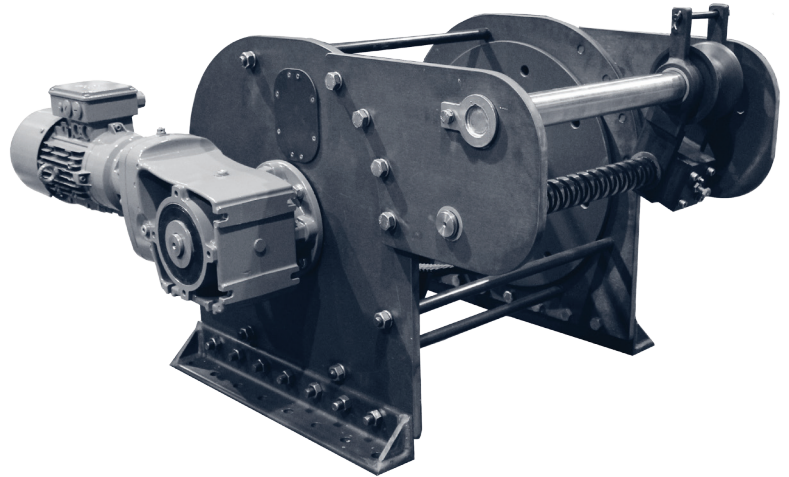
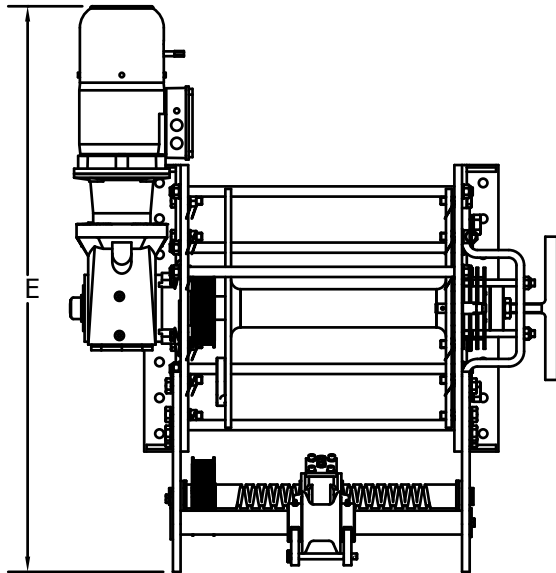
POWER UP



DF-AW ANCHOR WINCH Features & Specifications

- Anodized aluminum frame and components.
- Stainless Steel shafts.
- Manual disc brake system with all stainless steel components.
- All stainless fasteners and separator rods.
- Nord aluminum gearmotor with NSD-X3 paint and corrosion protected fail-safe brake.
- Designed to DNV specifications.
- Synchronous levelwind system.
- No maintenance Thordon bearings.
- Windlass is approved for chain I6mm K2 and I7.5mm K1 with minimum breaking strengths of 150 kN and 125 kN.

MODEL	LINE PULL	LINE SPEED	DRUM SIZE	WEIGHT
	LBS	FPM	IN	LBS
DF-AW-600-2-91-E-AL	1,872	34	3" x 19-1/2" x 15-3/4"	456



MODEL	A	B	C	D	E	ØF	G	ØH
DF-AW-600-2-91-E-AL	33-1/2"	29-1/4"	40-1/8"	25-3/4"	46-5/8"	3-1/8"	17-3/4"	19-5/8"