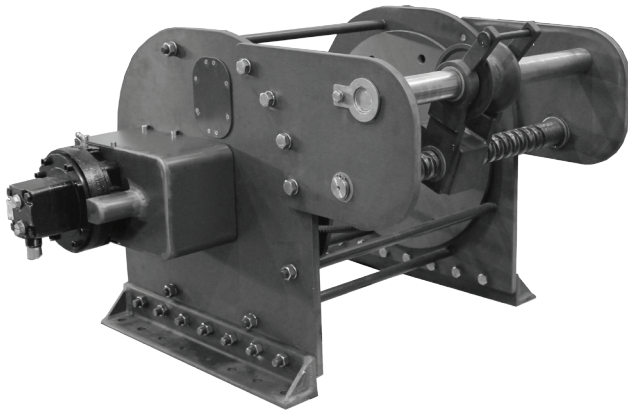
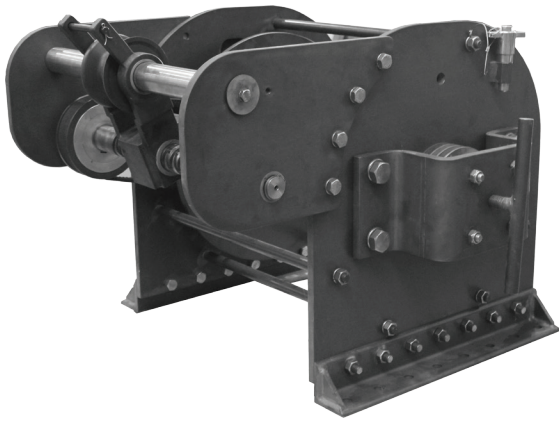


THE RIGHT CHOICE WHEN YOU NEED TO

POWER UP



DF-AW HYDRAULIC ANCHOR WINCH

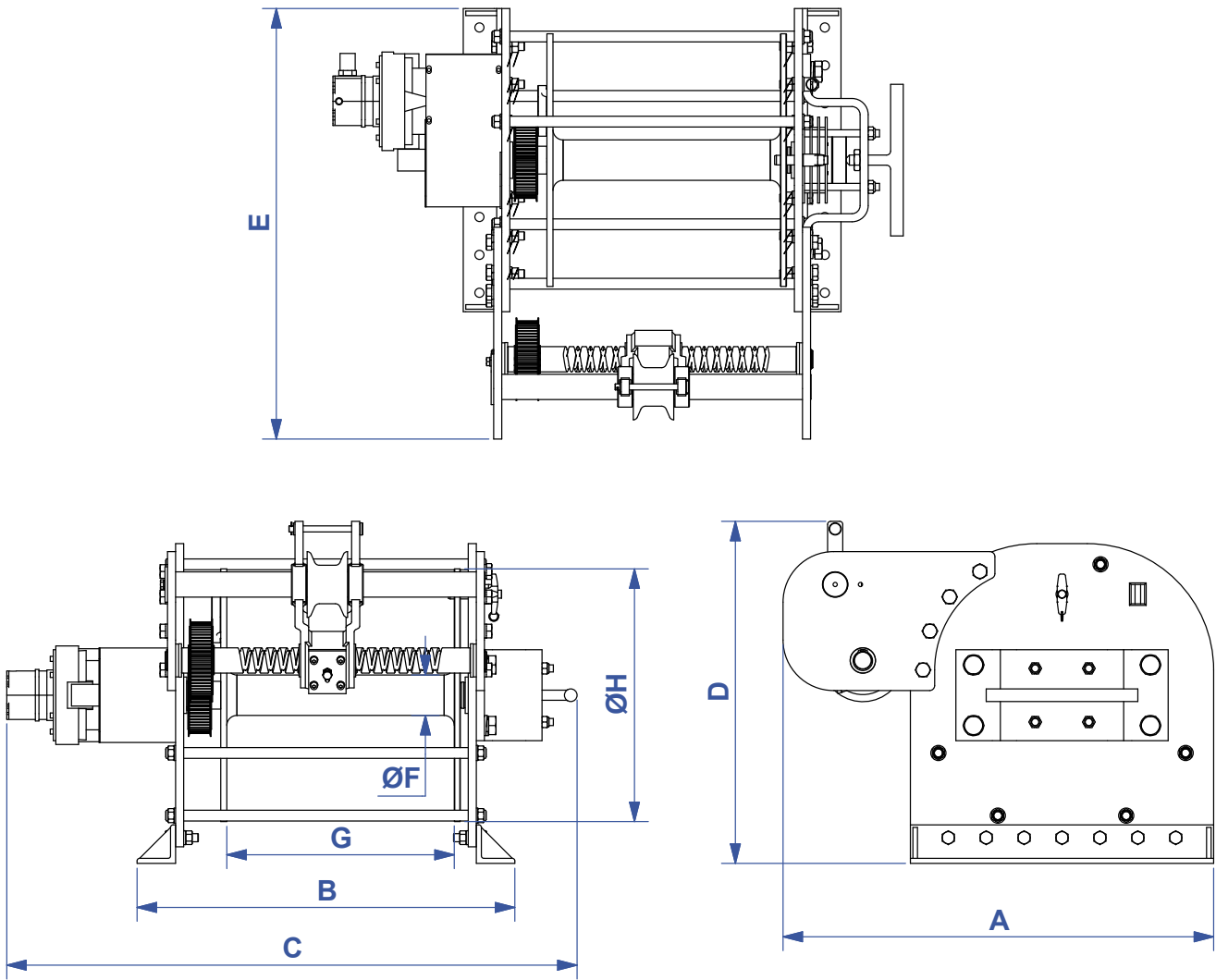
Features & Specifications

- Anodized aluminum frame and components.
- Stainless Steel shafts.
- Manual disc brake system with all stainless steel components.
- All stainless fasteners and separator rods.
- Nord aluminum gearmotor with NSD-X3 paint and corrosion protected fail-safe brake.
- Designed to DNV specifications.
- Synchronous levelwind system.
- No maintenance Thordon bearings.
- Windlass is approved for chain I6mm K2 and I7.5mm KI with minimum breaking strengths of 150 kN and 125 kN.

MODEL	LINE PULL	LINE SPEED	DRUM SIZE	WEIGHT
	LBS	FPM	IN	LBS
DF-AW-600-2-91-H-AL	1,872	34	3" x 19-1/2" x 15-3/4"	347
	KG	MPM	MM	KG
	850	10	76 x 495 x 400	207



NABRICO



MODEL	A	B	C	D	E	ØF	G	ØH
DF-AW-600-2-91-H-AL	33-1/2"	29-1/4"	44-1/2"	25-3/4"	33-1/2"	3-1/8"	17-3/4"	19-5/8"
	851 MM	743 MM	1130 MM	654 MM	851 MM	79 MM	451 MM	498 MM