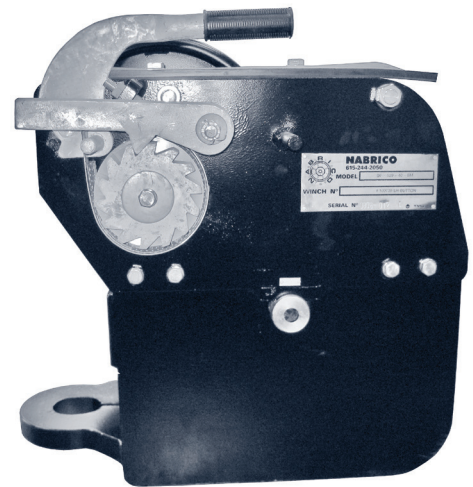
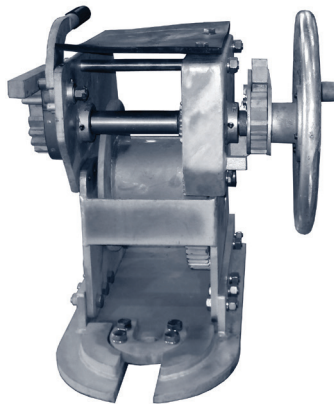
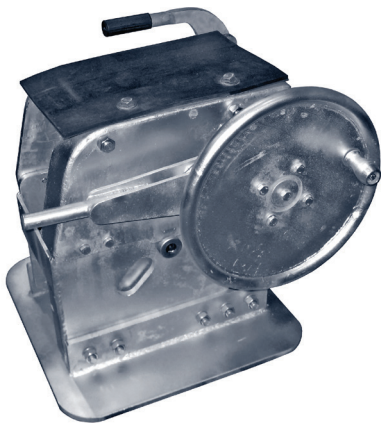


THE RIGHT CHOICE WHEN YOU NEED TO

POWER UP



DF-529 LOW-PROFILE WINCH

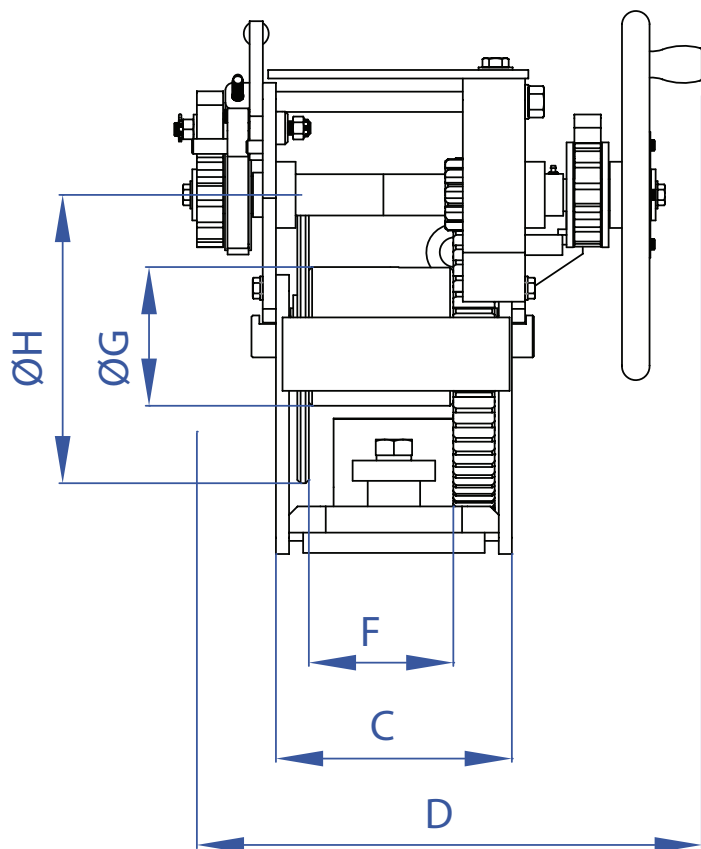
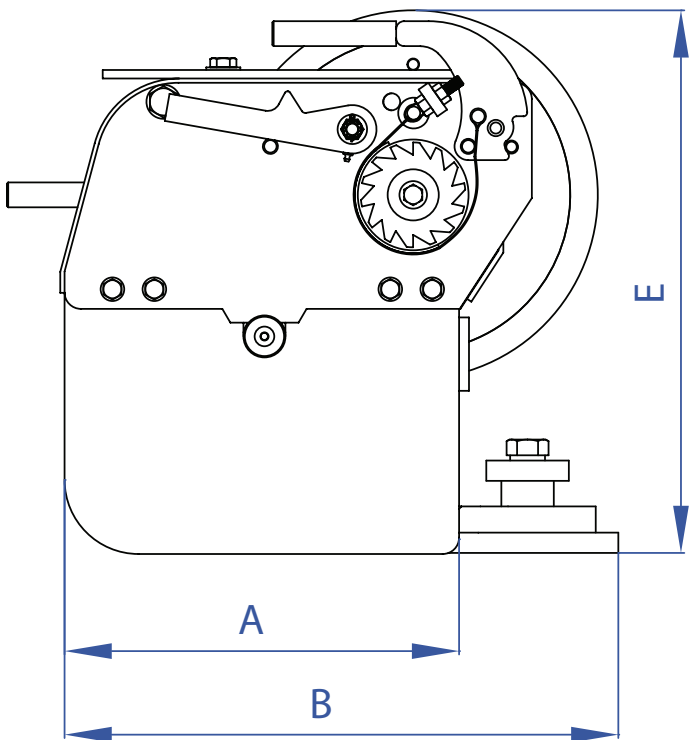
Features & Specifications

- Patented high load release dog with secondary anti-backlash drag brake that is activated automatically with the release of the dog.
- All steel construction.
- Proven 40 ton holding capacity.
- Precision machined side plates, gears, ratchet, and shafts to maintain proper gear tooth engagement and minimize wear.
- Easy cable attachment and solid drum gear.
- Right and left hand models for use in pairs.
- Quick release hand brake.
- Lever ratchet for extra high tension.
- Low profile design.
- Available in D-Ring, Button, and Doubler plate mounts.
- Bolted connections for easy maintenance.
- 3-part paint system or hot dipped galvanized coatings in stock.
- Heavy duty springless, galvanized ratchet handle.

MODEL	HOLDING DOG & OR BRAKE	LINE PULL @ FIRST LAYER WITH ONE MAN (LBS)		DRUM FLANGE DIAM. (IN)	DRUM (IN)		DRUM CAPACITIES (FT)			
	S. TONS	HAND WHEEL	RATCHET W/ STD. EXT.		DIAM	WIDTH	5/8"	3/4"	7/8"	1"
DF-529	40 TONS	2,000	8,000	14	6.6	6.89	126	95	85	70



NABRICO



MODEL	A	B	C	D	E	F	ØG	ØH	WT. (LBS)
DF-529-BM	18-3/4"	26-1/2"	11-1/4"	24"	25-1/2"	6-7/8"	6-5/8"	14"	550
DF-529-DP	23-1/2"	28-3/8"	23-1/2"	24-1/2"	25-1/2"	6-7/8"	6-5/8"	14"	550
DF-529-DR	19-11/16"	29-1/2"	15"	24"	25-1/2"	6-7/8"	6-5/8"	14"	550