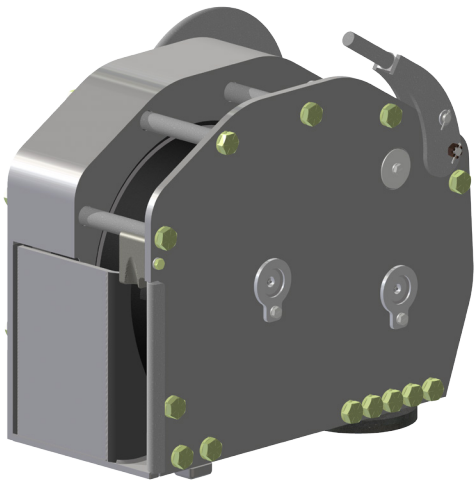
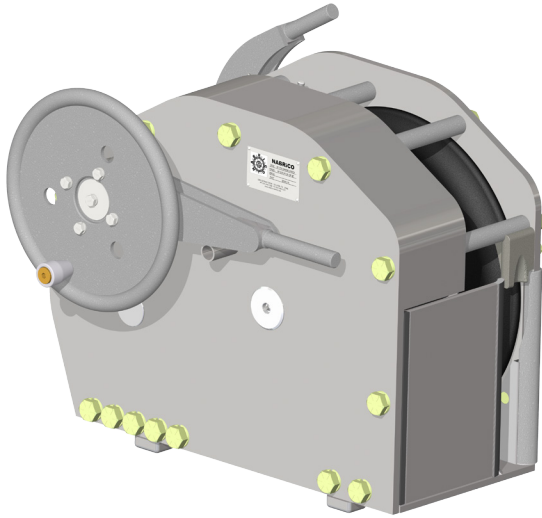


DF-629 MANUAL WINCH



Features & Specifications

- Large D over D ratio 20:1 ANSI/ASME minimum is 15:1 for pulling and 18:1 for lifting.
- Hard chrome plated shafts, SS hardware and galvanized winch body.
- Patent pending, large, single layer drum.
- Tapered drum design eliminates multi-layer spooling causing crushing and inconsistent wire tensioning.
- Fully enclosed drivetrain to help protect the operator, wire and gearing.
- Simple operation, wire pulls out easily, takes up very little deck space.
- Requires almost no retightening with only one layer of wire.
- Open design drum allows for 100 percent wire inspection and no damaged wire overfilling the drum cavity.
- Patented drum and high load release dog with automatic brake make this winch easy to use and appreciate.
- Patented/Patent Pending (Publication # US 20140124719 A1)

MODEL NO.	DOG HOLDING	LINE PULL - RATCHET	CABLE CAPACITY (FT.)		WEIGHT
	LBS.		LBS.	7/8"	1"
DF-629	80,000	15,000	30	25	1177



DF-629 MANUAL WINCH

